



Demographic and Income Comparison Profile

328 N Western Ave, Peoria, Illinois, 61604
Rings: 1, 3, 5 mile radii

Prepared by Esri
Latitude: 40.69193
Longitude: -89.62287

	1 mile	3 miles	5 miles
Census 2010 Summary			
Population	16,505	69,105	127,442
Households	5,627	27,082	52,231
Families	3,102	15,338	30,685
Average Household Size	2.58	2.44	2.35
Owner Occupied Housing Units	2,939	14,395	32,583
Renter Occupied Housing Units	2,688	12,687	19,648
Median Age	24.9	31.2	35.2
2016 Summary			
Population	16,373	68,484	126,798
Households	5,575	26,802	51,993
Families	3,008	14,917	30,049
Average Household Size	2.58	2.44	2.35
Owner Occupied Housing Units	2,751	13,536	31,138
Renter Occupied Housing Units	2,824	13,265	20,854
Median Age	25.5	32.1	36.2
Median Household Income	\$34,049	\$34,341	\$41,530
Average Household Income	\$49,074	\$47,332	\$56,698
2021 Summary			
Population	16,279	68,056	126,302
Households	5,542	26,629	51,811
Families	2,956	14,685	29,685
Average Household Size	2.58	2.44	2.35
Owner Occupied Housing Units	2,708	13,387	30,916
Renter Occupied Housing Units	2,834	13,242	20,895
Median Age	26.6	32.8	37.2
Median Household Income	\$30,761	\$31,591	\$38,611
Average Household Income	\$50,504	\$48,602	\$59,406
Trends: 2016-2021 Annual Rate			
Population	-0.12%	-0.13%	-0.08%
Households	-0.12%	-0.13%	-0.07%
Families	-0.35%	-0.31%	-0.24%
Owner Households	-0.31%	-0.22%	-0.14%
Median Household Income	-2.01%	-1.66%	-1.45%

Source: U.S. Census Bureau, Census 2010 Summary File 1. Esri forecasts for 2016 and 2021.



Demographic and Income Comparison Profile

328 N Western Ave, Peoria, Illinois, 61604
Rings: 1, 3, 5 mile radii

Prepared by Esri
Latitude: 40.69193
Longitude: -89.62287

2016 Households by Income	1 mile		3 miles		5 miles	
	Number	Percent	Number	Percent	Number	Percent
<\$15,000	1,489	26.7%	6,390	23.8%	8,962	17.2%
\$15,000 - \$24,999	718	12.9%	3,600	13.4%	6,254	12.0%
\$25,000 - \$34,999	625	11.2%	3,589	13.4%	6,491	12.5%
\$35,000 - \$49,999	874	15.7%	4,082	15.2%	8,255	15.9%
\$50,000 - \$74,999	831	14.9%	4,410	16.5%	9,617	18.5%
\$75,000 - \$99,999	386	6.9%	2,146	8.0%	5,657	10.9%
\$100,000 - \$149,999	414	7.4%	1,736	6.5%	4,356	8.4%
\$150,000 - \$199,999	119	2.1%	491	1.8%	1,259	2.4%
\$200,000+	115	2.1%	353	1.3%	1,137	2.2%
Median Household Income	\$34,049		\$34,341		\$41,530	
Average Household Income	\$49,074		\$47,332		\$56,698	
Per Capita Income	\$17,689		\$19,226		\$23,862	

2021 Households by Income	1 mile		3 miles		5 miles	
	Number	Percent	Number	Percent	Number	Percent
<\$15,000	1,515	27.4%	6,503	24.4%	9,249	17.9%
\$15,000 - \$24,999	633	11.4%	3,173	11.9%	5,676	11.0%
\$25,000 - \$34,999	948	17.1%	4,973	18.7%	9,052	17.5%
\$35,000 - \$49,999	652	11.8%	3,384	12.7%	6,382	12.3%
\$50,000 - \$74,999	672	12.1%	3,516	13.2%	7,749	15.0%
\$75,000 - \$99,999	403	7.3%	2,276	8.5%	6,012	11.6%
\$100,000 - \$149,999	452	8.2%	1,844	6.9%	4,902	9.5%
\$150,000 - \$199,999	149	2.7%	593	2.2%	1,521	2.9%
\$200,000+	113	2.0%	364	1.4%	1,263	2.4%
Median Household Income	\$30,761		\$31,591		\$38,611	
Average Household Income	\$50,504		\$48,602		\$59,406	
Per Capita Income	\$18,188		\$19,723		\$24,980	

Data Note: Income is expressed in current dollars.

Source: U.S. Census Bureau, Census 2010 Summary File 1. Esri forecasts for 2016 and 2021.



Demographic and Income Comparison Profile

328 N Western Ave, Peoria, Illinois, 61604
Rings: 1, 3, 5 mile radii

Prepared by Esri
Latitude: 40.69193
Longitude: -89.62287

2010 Population by Age	1 mile		3 miles		5 miles	
	Number	Percent	Number	Percent	Number	Percent
Age 0 - 4	1,109	6.7%	5,593	8.1%	9,047	7.1%
Age 5 - 9	976	5.9%	4,803	7.0%	8,065	6.3%
Age 10 - 14	974	5.9%	4,608	6.7%	8,009	6.3%
Age 15 - 19	2,209	13.4%	6,058	8.8%	9,657	7.6%
Age 20 - 24	3,049	18.5%	7,114	10.3%	10,586	8.3%
Age 25 - 34	1,979	12.0%	9,823	14.2%	18,057	14.2%
Age 35 - 44	1,537	9.3%	7,763	11.2%	14,795	11.6%
Age 45 - 54	1,686	10.2%	8,571	12.4%	16,908	13.3%
Age 55 - 64	1,439	8.7%	7,190	10.4%	14,975	11.8%
Age 65 - 74	850	5.2%	3,936	5.7%	8,668	6.8%
Age 75 - 84	484	2.9%	2,504	3.6%	5,925	4.6%
Age 85+	212	1.3%	1,143	1.7%	2,751	2.2%

2016 Population by Age	1 mile		3 miles		5 miles	
	Number	Percent	Number	Percent	Number	Percent
Age 0 - 4	1,035	6.3%	5,304	7.7%	8,574	6.8%
Age 5 - 9	989	6.0%	4,707	6.9%	7,950	6.3%
Age 10 - 14	957	5.8%	4,404	6.4%	7,630	6.0%
Age 15 - 19	2,064	12.6%	5,413	7.9%	8,644	6.8%
Age 20 - 24	3,032	18.5%	7,369	10.8%	10,846	8.6%
Age 25 - 34	1,989	12.1%	9,778	14.3%	17,845	14.1%
Age 35 - 44	1,529	9.3%	7,663	11.2%	14,862	11.7%
Age 45 - 54	1,529	9.3%	7,623	11.1%	15,031	11.9%
Age 55 - 64	1,527	9.3%	7,805	11.4%	15,982	12.6%
Age 65 - 74	1,011	6.2%	4,821	7.0%	10,643	8.4%
Age 75 - 84	506	3.1%	2,427	3.5%	5,840	4.6%
Age 85+	204	1.2%	1,172	1.7%	2,950	2.3%

2021 Population by Age	1 mile		3 miles		5 miles	
	Number	Percent	Number	Percent	Number	Percent
Age 0 - 4	1,019	6.3%	5,227	7.7%	8,418	6.7%
Age 5 - 9	923	5.7%	4,624	6.8%	7,791	6.2%
Age 10 - 14	940	5.8%	4,329	6.4%	7,630	6.0%
Age 15 - 19	2,058	12.6%	5,254	7.7%	8,386	6.6%
Age 20 - 24	2,849	17.5%	6,731	9.9%	9,863	7.8%
Age 25 - 34	1,979	12.2%	9,865	14.5%	17,589	13.9%
Age 35 - 44	1,626	10.0%	7,837	11.5%	15,433	12.2%
Age 45 - 54	1,444	8.9%	7,170	10.5%	14,017	11.1%
Age 55 - 64	1,515	9.3%	7,491	11.0%	15,251	12.1%
Age 65 - 74	1,169	7.2%	5,699	8.4%	12,509	9.9%
Age 75 - 84	562	3.5%	2,696	4.0%	6,431	5.1%
Age 85+	196	1.2%	1,133	1.7%	2,982	2.4%

Source: U.S. Census Bureau, Census 2010 Summary File 1. Esri forecasts for 2016 and 2021.



Demographic and Income Comparison Profile

328 N Western Ave, Peoria, Illinois, 61604
Rings: 1, 3, 5 mile radii

Prepared by Esri
Latitude: 40.69193
Longitude: -89.62287

2010 Race and Ethnicity	1 mile		3 miles		5 miles	
	Number	Percent	Number	Percent	Number	Percent
White Alone	9,324	56.5%	37,388	54.1%	87,685	68.8%
Black Alone	5,886	35.7%	25,528	36.9%	30,358	23.8%
American Indian Alone	59	0.4%	275	0.4%	438	0.3%
Asian Alone	280	1.7%	893	1.3%	2,001	1.6%
Pacific Islander Alone	2	0.0%	17	0.0%	36	0.0%
Some Other Race Alone	388	2.4%	2,101	3.0%	2,648	2.1%
Two or More Races	566	3.4%	2,904	4.2%	4,276	3.4%
Hispanic Origin (Any Race)	825	5.0%	4,195	6.1%	5,920	4.6%

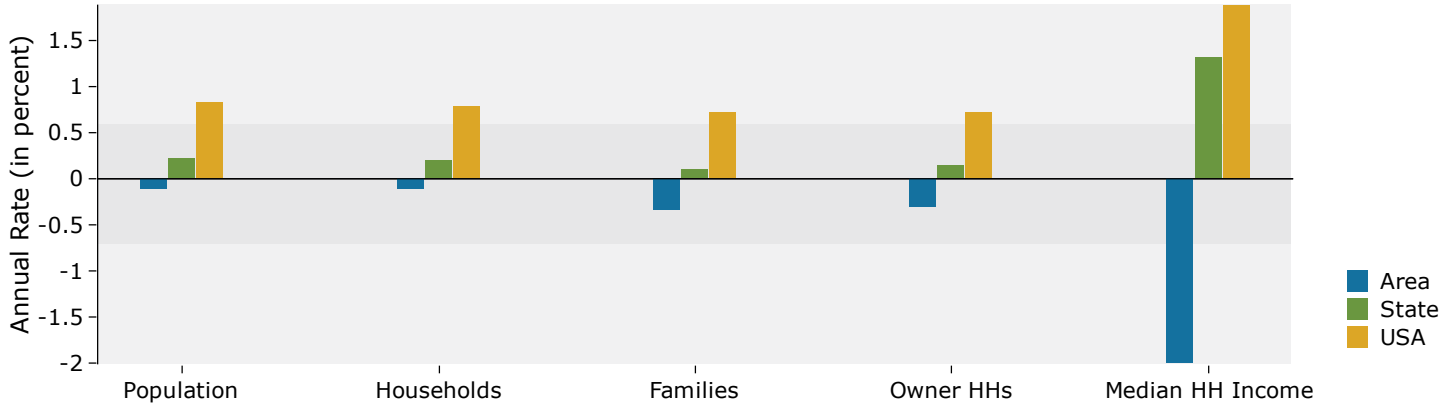
2016 Race and Ethnicity	1 mile		3 miles		5 miles	
	Number	Percent	Number	Percent	Number	Percent
White Alone	8,941	54.6%	35,180	51.4%	84,229	66.4%
Black Alone	5,920	36.2%	26,001	38.0%	31,287	24.7%
American Indian Alone	59	0.4%	270	0.4%	440	0.3%
Asian Alone	325	2.0%	1,032	1.5%	2,386	1.9%
Pacific Islander Alone	2	0.0%	17	0.0%	39	0.0%
Some Other Race Alone	487	3.0%	2,672	3.9%	3,411	2.7%
Two or More Races	639	3.9%	3,312	4.8%	5,005	3.9%
Hispanic Origin (Any Race)	1,028	6.3%	5,332	7.8%	7,692	6.1%

2021 Race and Ethnicity	1 mile		3 miles		5 miles	
	Number	Percent	Number	Percent	Number	Percent
White Alone	8,581	52.7%	33,383	49.1%	81,219	64.3%
Black Alone	5,939	36.5%	26,212	38.5%	31,835	25.2%
American Indian Alone	59	0.4%	266	0.4%	444	0.4%
Asian Alone	383	2.4%	1,200	1.8%	2,831	2.2%
Pacific Islander Alone	2	0.0%	17	0.0%	42	0.0%
Some Other Race Alone	594	3.6%	3,239	4.8%	4,170	3.3%
Two or More Races	722	4.4%	3,740	5.5%	5,761	4.6%
Hispanic Origin (Any Race)	1,248	7.7%	6,450	9.5%	9,455	7.5%

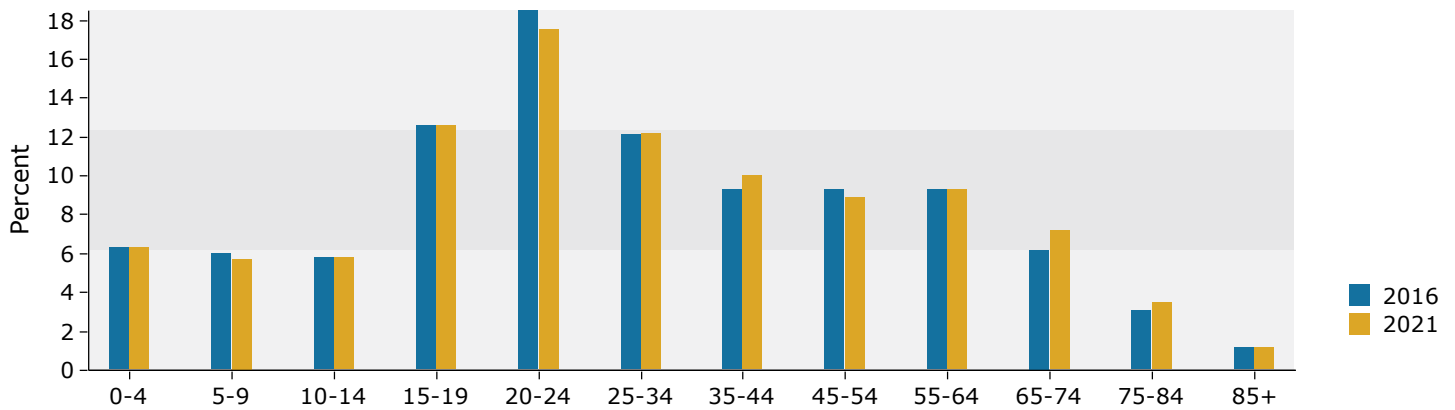
Source: U.S. Census Bureau, Census 2010 Summary File 1. Esri forecasts for 2016 and 2021.

1 mile

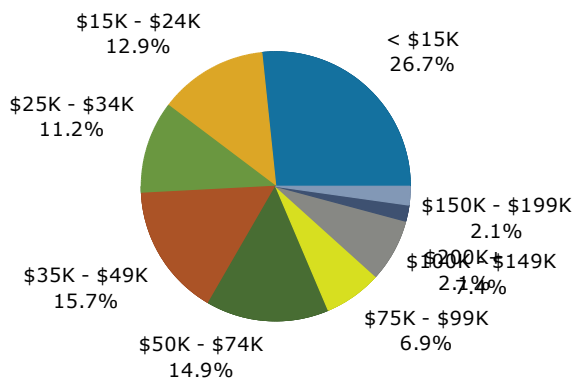
Trends 2016-2021



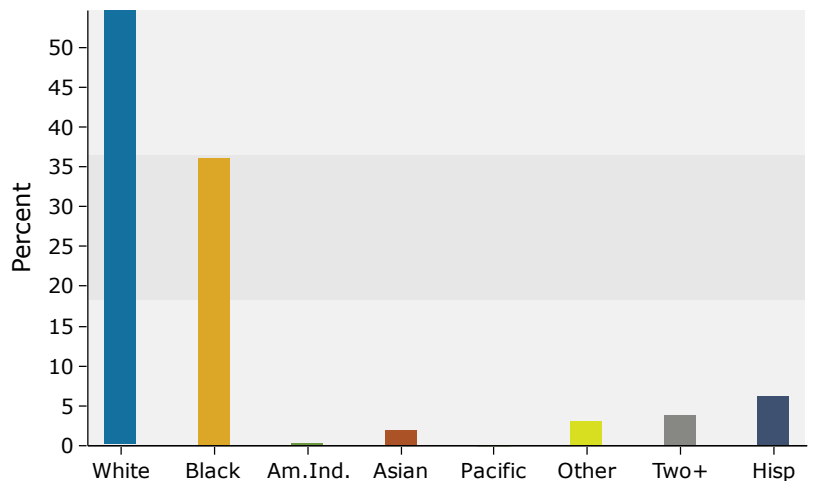
Population by Age



2016 Household Income

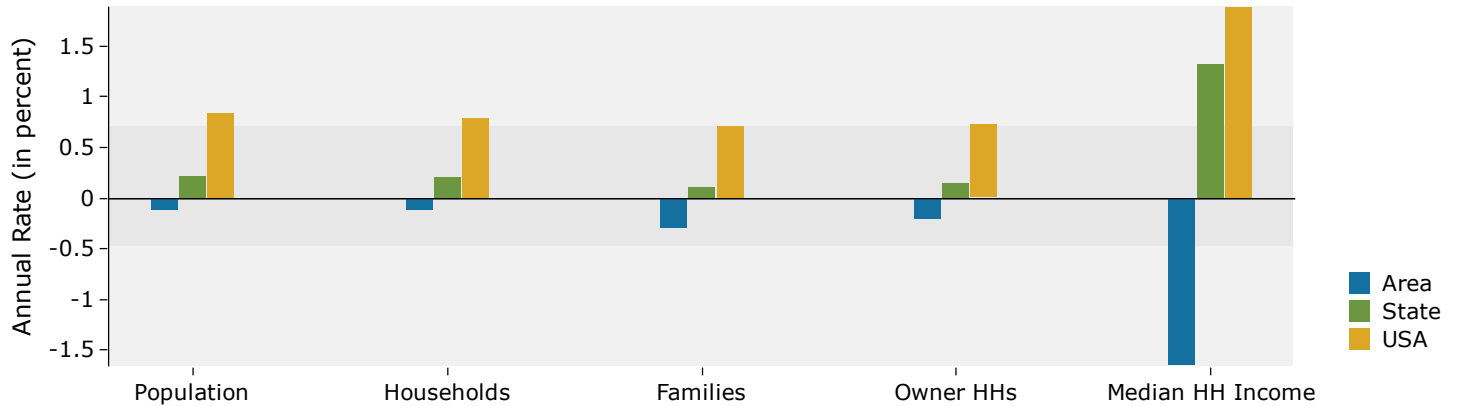


2016 Population by Race

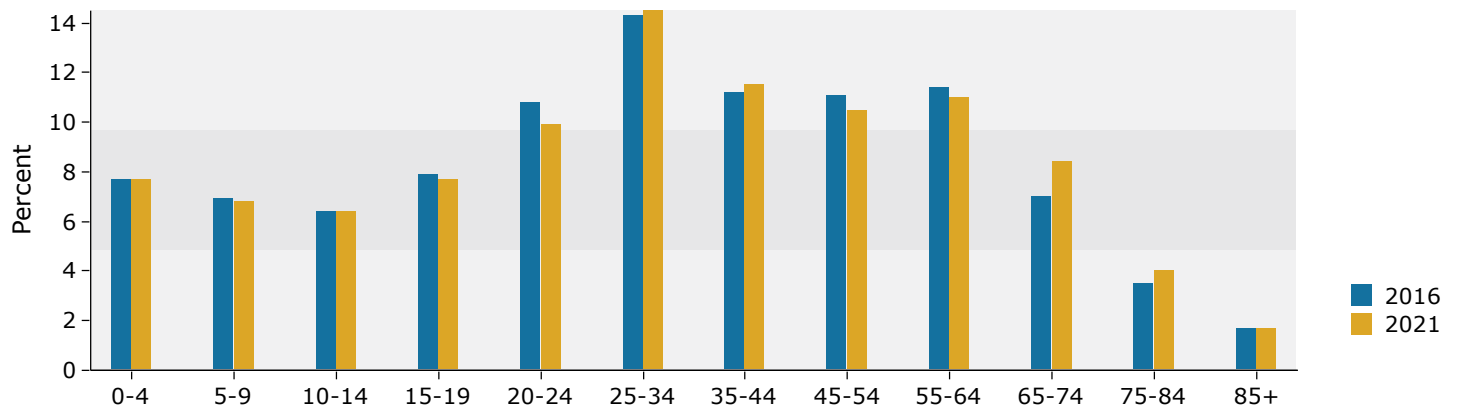


3 miles

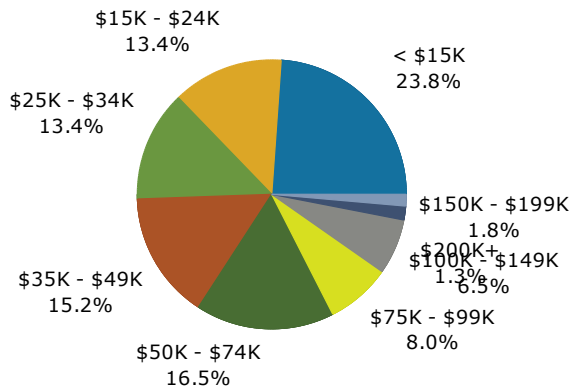
Trends 2016-2021



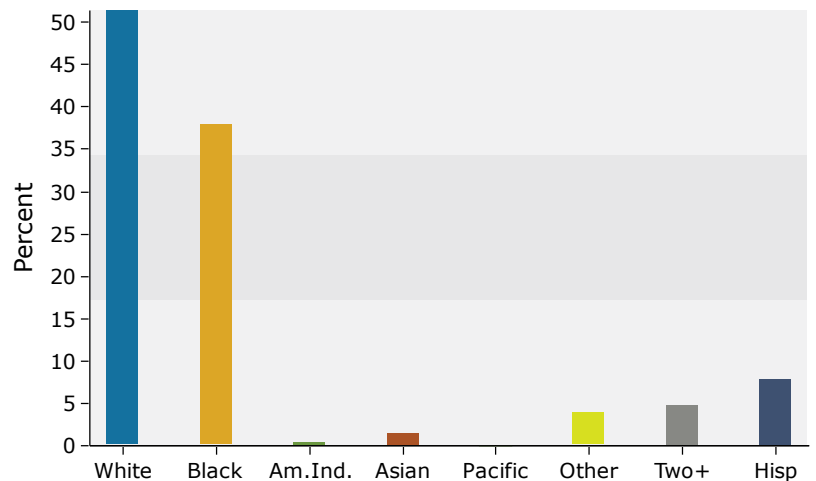
Population by Age



2016 Household Income



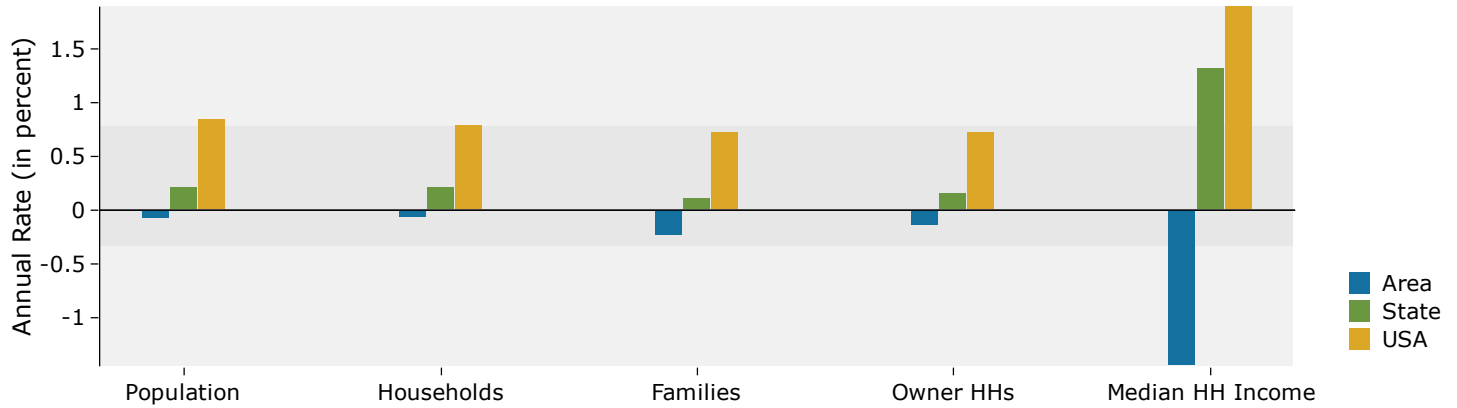
2016 Population by Race



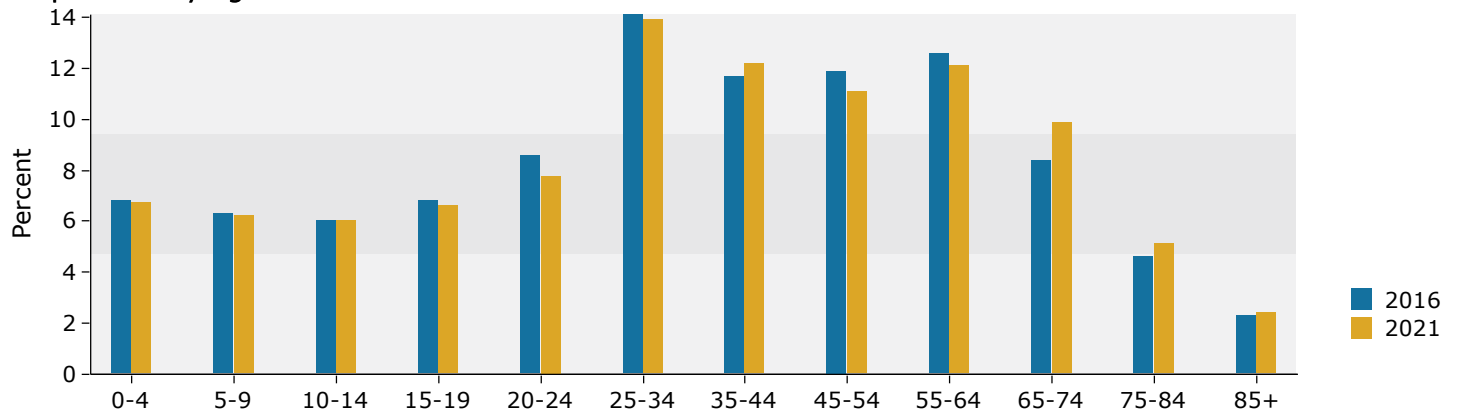
Source: U.S. Census Bureau, Census 2010 Summary File 1. Esri forecasts for 2016 and 2021.

5 miles

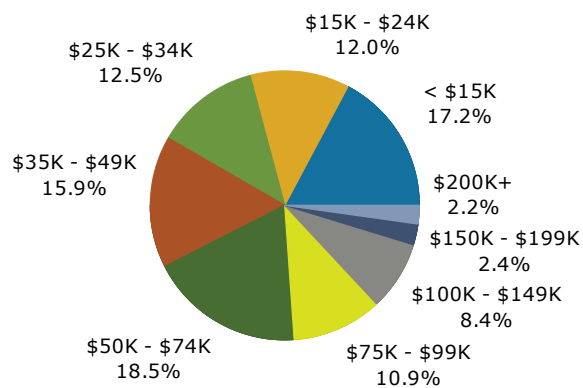
Trends 2016-2021



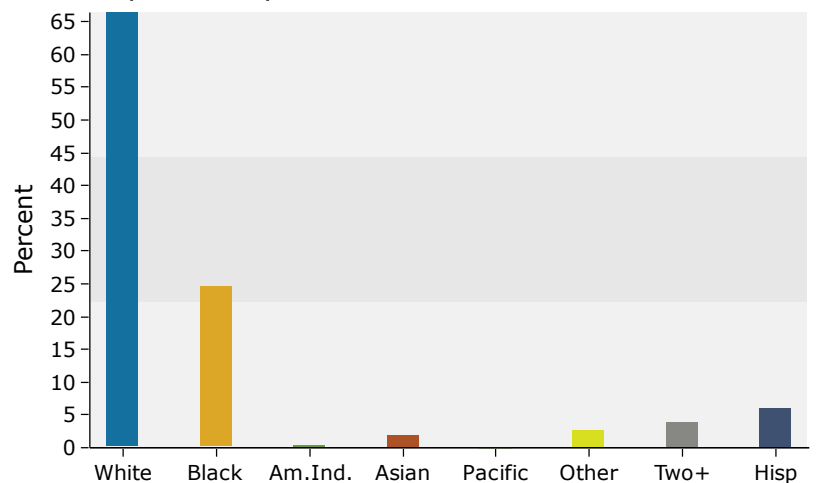
Population by Age



2016 Household Income



2016 Population by Race



Source: U.S. Census Bureau, Census 2010 Summary File 1. Esri forecasts for 2016 and 2021.