

679 Washington St

Afton, WY 83110

36,187 sq. ft.

\$10.80/sq. ft. NNN

\*NNN includes but not limited to Real Estate Taxes, Insurance, and CAM (such as parking lot maintenance, snow removal, lawn care, etc.)

RETAIL SPACE FOR LEASE

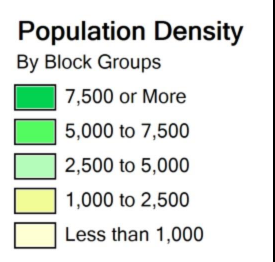
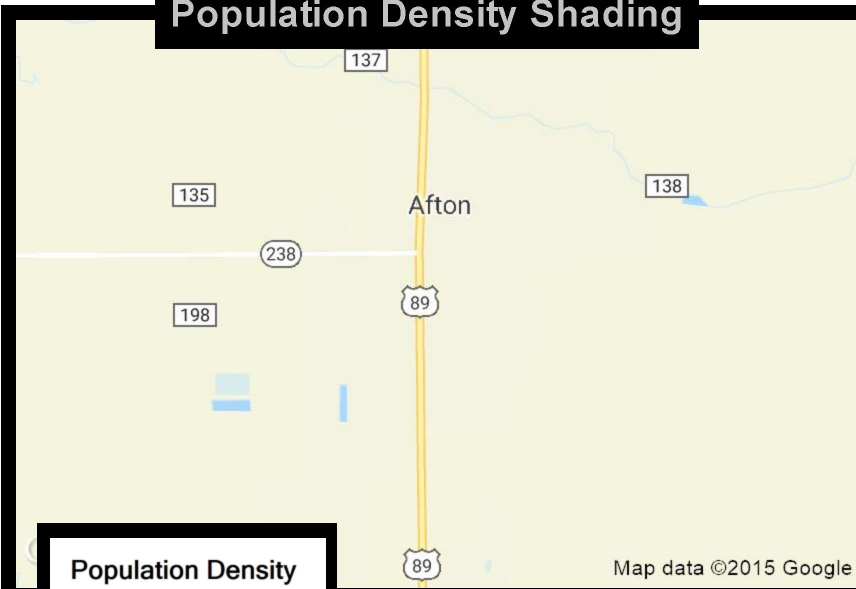
Aerial - Site View



Former Shopko Hometown Market

Available mid-2019

Population Density Shading



Demographic Data

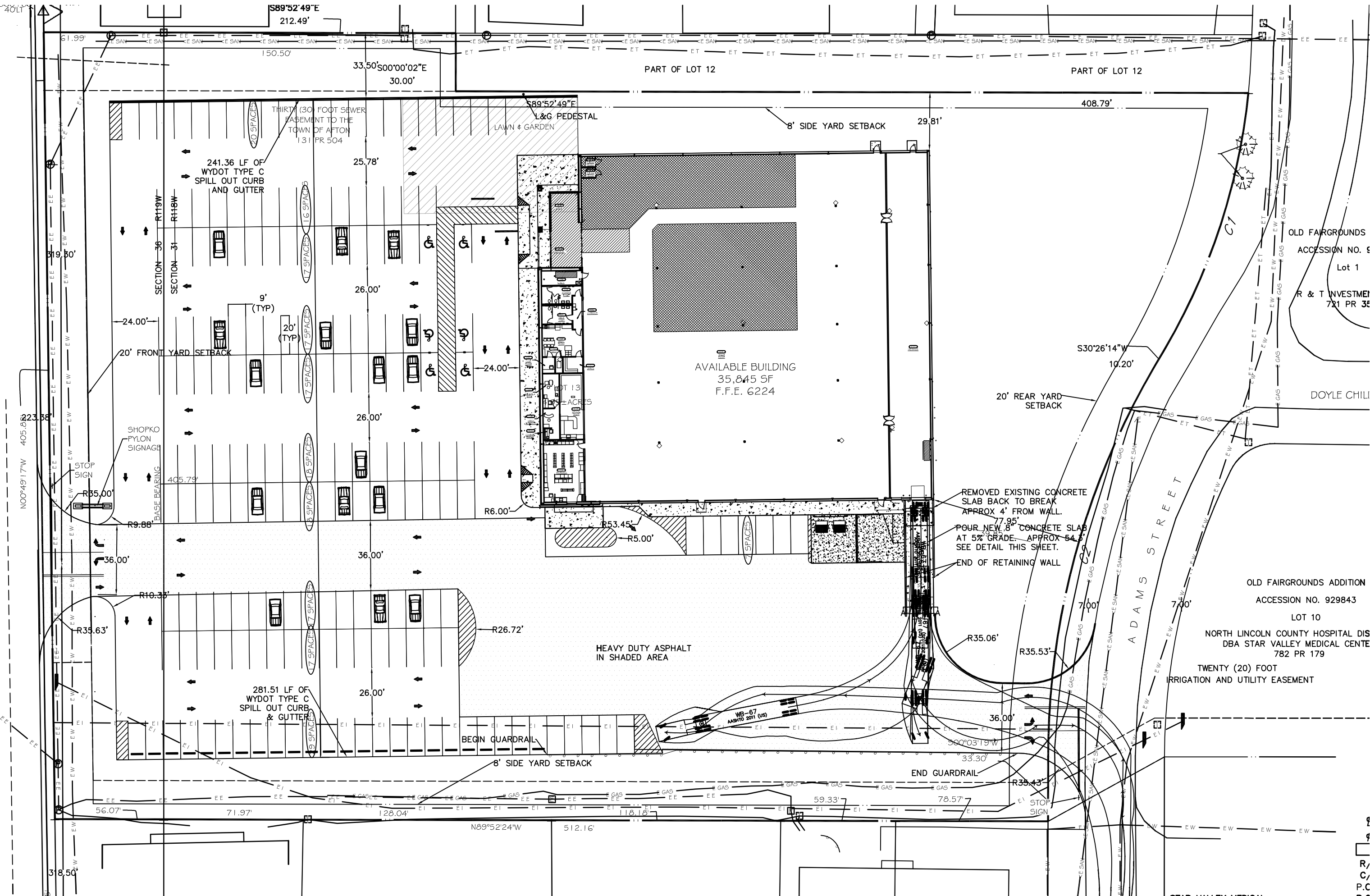
	5 mi radius	10 mi radius	15 mi radius	20 mi radius
Population (2018)	4,566	6,319	8,016	10,765
Households (2018)	1,689	2,312	2,990	4,121
Median household income (2018)	\$61,872	\$63,175	\$59,668	\$63,458
Total Employees	2,714	2,739	3,444	3,773
Total Establishments	353	359	491	550

**COCCA DEVELOPMENT, LTD**  
100 DEBARTOLO PLACE SUITE 400 BOARDMAN, OHIO 44512  
(330) 729-1010  
WWW.COCCADEVELOPMENT.COM

This map was produced using data from private and government sources deemed to be reliable. The information herein is provided without representation or warranty.

WASHINGTON STREET (U.S. HIGHWAY 89)  
(80' Right-of-way, 4 Lanes with center turn lane)

WB-67  
(SU) USE ONLY



OLD FAIRGROUNDS  
ACCESSION NO. 929843  
Lot 1  
R & T INVESTMENT  
721 PR 3E

DOYLE CHIL

OLD FAIRGROUNDS ADDITION  
ACCESSION NO. 929843  
LOT 10  
NORTH LINCOLN COUNTY HOSPITAL DIS  
DBA STAR VALLEY MEDICAL CENTER  
782 PR 179  
TWENTY (20) FOOT  
IRRIGATION AND UTILITY EASEMENT

R/C/P/C

# 679 Washington St

Afton, WY 83110

## Aerial View



## 5 Mile Information

2,714

Employees

\$61,872

Median Income

353

Businesses





# GRAPHIC PROFILE

2000-2010 Census, 2018 Estimates with 2023 Projections

Calculated using Weighted Block Centroid from Block Groups

Lat/Lon: 42.7187/-110.9321

RGRAP3

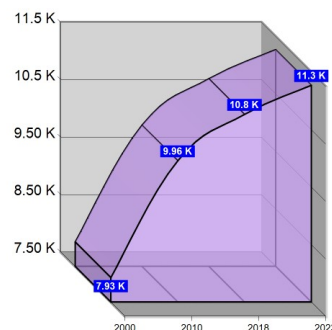
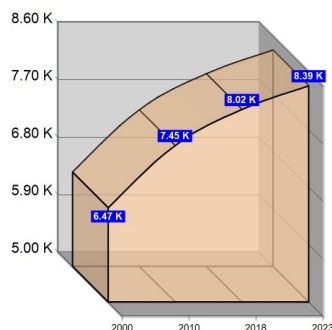
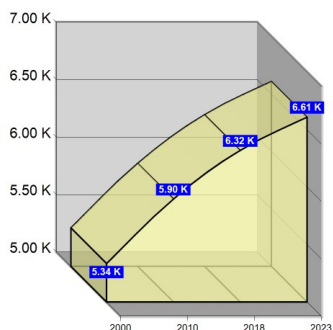
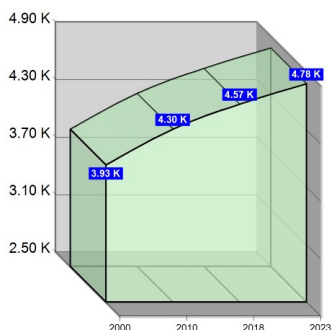
## 679 Washington St

Afton, WY 83110

5 mi radius      10 mi radius      15 mi radius      20 mi radius

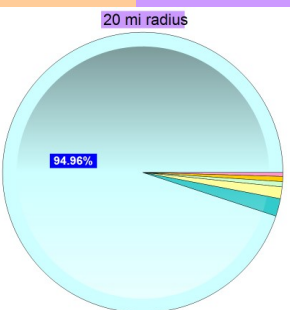
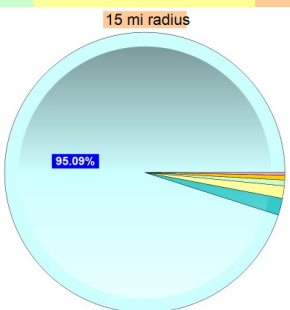
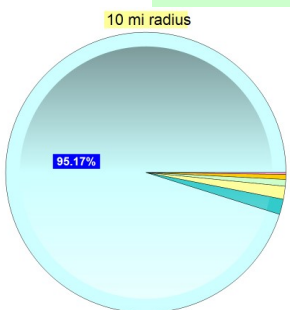
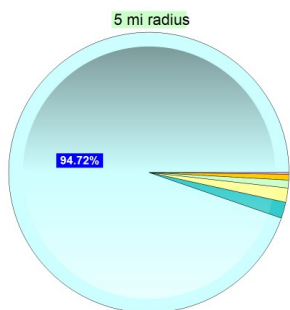
### Population

	5 mi radius	10 mi radius	15 mi radius	20 mi radius
Estimated Population (2018)	4,566	6,319	8,016	10,765
Projected Population (2023)	4,778	6,609	8,388	11,271
Census Population (2010)	4,304	5,896	7,451	9,958
Census Population (2000)	3,932	5,335	6,474	7,925
Projected Annual Growth (2018-2023)	212 0.9%	290 0.9%	372 0.9%	506 0.9%
Historical Annual Growth (2010-2018)	262 1.1%	423 1.2%	565 1.6%	807 2.6%
Historical Annual Growth (2000-2010)	372 0.9%	561 1.1%	977 1.5%	2,033 2.6%
Estimated Population Density (2018)	58 psm	20 psm	11 psm	9 psm
Trade Area Size	78.5 sq mi	314.0 sq mi	706.8 sq mi	1,256.5 sq mi



### Race and Ethnicity (2018)

	5 mi radius	10 mi radius	15 mi radius	20 mi radius
Not Hispanic or Latino Population	4,410 96.6%	6,109 96.7%	7,719 96.3%	10,340 96.1%
White	4,278 97.0%	5,946 97.3%	7,515 97.4%	10,062 97.3%
Black or African American	42 0.9%	49 0.8%	53 0.7%	65 0.6%
American Indian or Alaska Native	27 0.6%	32 0.5%	39 0.5%	57 0.6%
Asian	7 0.2%	11 0.2%	23 0.3%	46 0.4%
Hawaiian or Pacific Islander	-	-	-	-
Other Race	-	-	-	-
Two or More Races	57 1.3%	70 1.2%	89 1.2%	110 1.1%
Hispanic or Latino Population	156 3.4%	210 3.3%	297 3.7%	425 3.9%
White	47 30.4%	67 32.1%	107 36.1%	160 37.7%
Black or African American	-	-	-	-
American Indian or Alaska Native	3 1.8%	4 1.9%	4 1.5%	7 1.7%
Asian	3 1.9%	3 1.4%	3 1.0%	3 0.7%
Hispanic Hawaiian or Pacific Islander	-	-	-	-
Other Race	85 54.4%	111 53.1%	156 52.5%	219 51.6%
Two or More Races	18 11.4%	24 11.4%	26 8.9%	36 8.4%



White    Black or African American    American Indian or Alaska Native    Asian    Hawaiian or Pacific Islander    Other Race    2+ Races

This report was produced using data from private and government sources deemed to be reliable. The information herein is provided without representation or warranty.

# GRAPHIC PROFILE

2000-2010 Census, 2018 Estimates with 2023 Projections

Calculated using Weighted Block Centroid from Block Groups

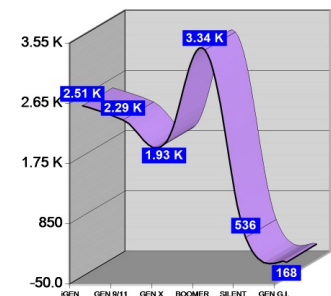
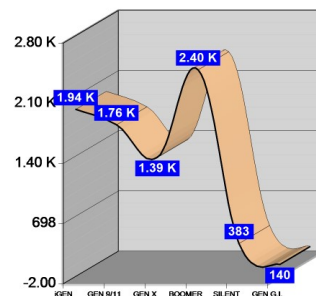
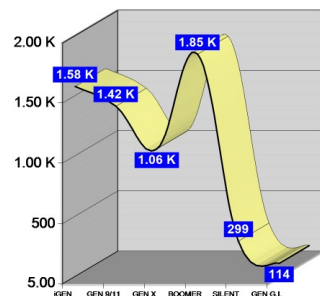
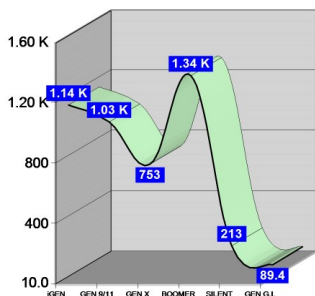
Lat/Lon: 42.7187/-110.9321

RGRAP3

**679 Washington St  
Afton, WY 83110**

	5 mi radius	10 mi radius	15 mi radius	20 mi radius
<b>Age Distribution (2018)</b>				
Age Under 5 Years	341 7.5%	471 7.5%	580 7.2%	755 7.0%
Age 5 to 9 Years	384 8.4%	528 8.4%	641 8.0%	827 7.7%
Age 10 to 14 Years	418 9.2%	581 9.2%	721 9.0%	923 8.6%
Age 15 to 19 Years	373 8.2%	513 8.1%	630 7.9%	774 7.2%
Age 20 to 24 Years	237 5.2%	323 5.1%	397 5.0%	505 4.7%
Age 25 to 29 Years	200 4.4%	276 4.4%	337 4.2%	446 4.1%
Age 30 to 34 Years	221 4.8%	305 4.8%	400 5.0%	568 5.3%
Age 35 to 39 Years	268 5.9%	374 5.9%	488 6.1%	689 6.4%
Age 40 to 44 Years	245 5.4%	341 5.4%	451 5.6%	632 5.9%
Age 45 to 49 Years	241 5.3%	346 5.5%	446 5.6%	605 5.6%
Age 50 to 54 Years	209 4.6%	295 4.7%	389 4.9%	535 5.0%
Age 55 to 59 Years	282 6.2%	400 6.3%	515 6.4%	701 6.5%
Age 60 to 64 Years	320 7.0%	442 7.0%	583 7.3%	819 7.6%
Age 65 to 69 Years	293 6.4%	397 6.3%	508 6.3%	714 6.6%
Age 70 to 74 Years	232 5.1%	313 5.0%	407 5.1%	569 5.3%
Age 75 to 79 Years	131 2.9%	183 2.9%	237 3.0%	336 3.1%
Age 80 to 84 Years	82 1.8%	115 1.8%	146 1.8%	200 1.9%
Age 85 Years or Over	89 2.0%	114 1.8%	140 1.7%	168 1.6%
Median Age	36.0	36.1	37.0	38.1

	5 mi radius	10 mi radius	15 mi radius	20 mi radius
<b>Generation (2018)</b>				
iGeneration (Age Under 15 Years)	1,143 25.0%	1,580 25.0%	1,942 24.2%	2,505 23.3%
Generation 9/11 Millennials (Age 15 to 34 Years)	1,031 22.6%	1,417 22.4%	1,764 22.0%	2,292 21.3%
Gen Xers (Age 35 to 49 Years)	753 16.5%	1,062 16.8%	1,385 17.3%	1,926 17.9%
Baby Boomers (Age 50 to 74 Years)	1,337 29.3%	1,847 29.2%	2,402 30.0%	3,337 31.0%
Silent Generation (Age 75 to 84 Years)	213 4.7%	299 4.7%	383 4.8%	536 5.0%
G.I. Generation (Age 85 Years or Over)	89 2.0%	114 1.8%	140 1.7%	168 1.6%



This report was produced using data from private and government sources deemed to be reliable. The information herein is provided without representation or warranty.

# GRAPHIC PROFILE

2000-2010 Census, 2018 Estimates with 2023 Projections

Calculated using Weighted Block Centroid from Block Groups

Lat/Lon: 42.7187/-110.9321

RGRAP3

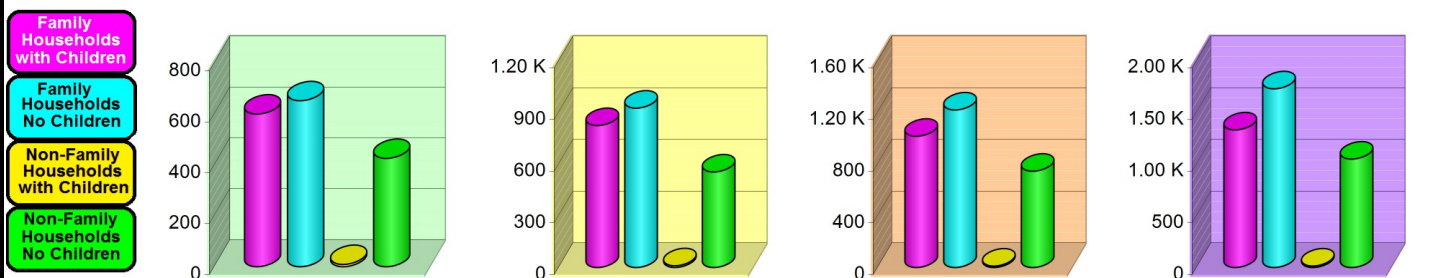
## 679 Washington St

Afton, WY 83110

5 mi radius      10 mi radius      15 mi radius      20 mi radius

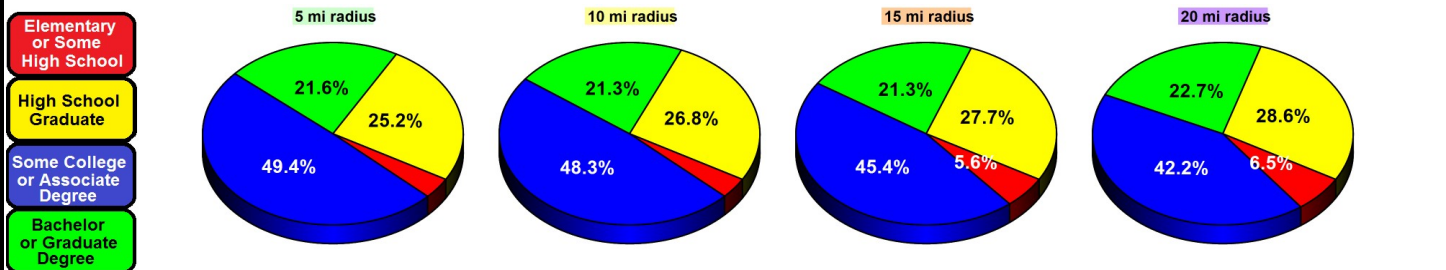
### Household Type (2018)

	5 mi radius	10 mi radius	15 mi radius	20 mi radius
Total Households	1,689	2,312	2,990	4,121
Family Households	1,254 74.2%	1,748 75.6%	2,234 74.7%	3,058 74.2%
Family Households with Children	601 47.9%	823 47.1%	1,015 45.4%	1,331 43.5%
Family Households No Children	653 52.1%	925 52.9%	1,219 54.6%	1,728 56.5%
Non-Family Households	435 25.8%	564 24.4%	756 25.3%	1,063 25.8%
Non-Family Households with Children	9 2.1%	10 1.8%	11 1.5%	15 1.4%
Non-Family Households No Children	426 97.9%	554 98.2%	745 98.5%	1,048 98.6%



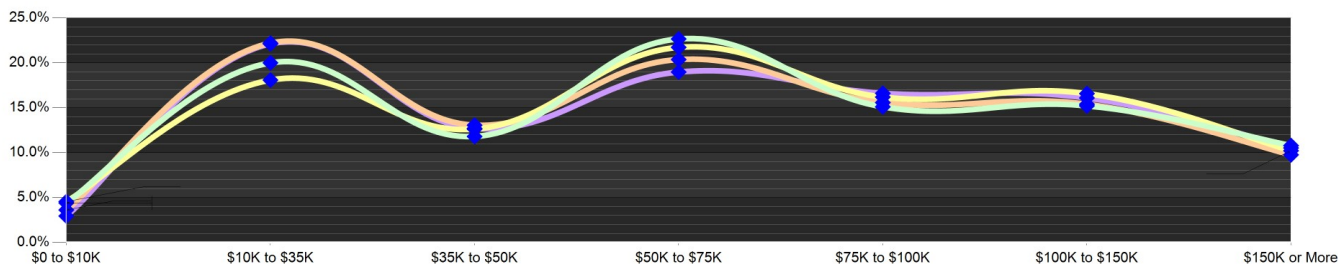
### Education Attainment (2018)

	5 mi radius	10 mi radius	15 mi radius	20 mi radius
Elementary or Some High School	104 3.7%	143 3.7%	283 5.6%	451 6.5%
High School Graduate	710 25.2%	1,047 26.8%	1,399 27.7%	1,997 28.6%
Some College or Associate Degree	1,390 49.4%	1,883 48.3%	2,291 45.4%	2,949 42.2%
Bachelor or Graduate Degree	609 21.6%	830 21.3%	1,074 21.3%	1,584 22.7%



### Household Income (2018)

	5 mi radius	10 mi radius	15 mi radius	20 mi radius
Estimated Average Household Income	\$72,976	\$77,017	\$74,086	\$77,593
Estimated Median Household Income	\$61,872	\$63,175	\$59,668	\$63,458
HH Income Under \$10,000	74 4.4%	105 4.6%	108 3.6%	121 2.9%
HH Income \$10,000 to \$34,999	338 20.0%	418 18.1%	664 22.2%	912 22.1%
HH Income \$35,000 to \$49,999	199 11.8%	292 12.6%	390 13.1%	523 12.7%
HH Income \$50,000 to \$74,999	383 22.7%	503 21.7%	609 20.4%	782 19.0%
HH Income \$75,000 to \$99,999	255 15.1%	375 16.2%	466 15.6%	685 16.6%
HH Income \$100,000 to \$149,999	257 15.2%	383 16.6%	460 15.4%	663 16.1%
HH Income \$150,000 or More	182 10.8%	236 10.2%	292 9.8%	434 10.5%



This report was produced using data from private and government sources deemed to be reliable. The information herein is provided without representation or warranty.

# EXPANDED PROFILE

2000-2010 Census, 2018 Estimates with 2023 Projections

Calculated using Weighted Block Centroid from Block Groups

Lat/Lon: 42.7187/-110.9321

RF5

679 Washington St Afton, WY 83110	5 mi radius	10 mi radius	15 mi radius	20 mi radius
<b>Population</b>				
Estimated Population (2018)	4,566	6,319	8,016	10,765
Projected Population (2023)	4,778	6,609	8,388	11,271
Census Population (2010)	4,304	5,896	7,451	9,958
Census Population (2000)	3,932	5,335	6,474	7,925
Projected Annual Growth (2018 to 2023)	212 0.9%	290 0.9%	372 0.9%	506 0.9%
Historical Annual Growth (2010 to 2018)	262 0.8%	423 0.9%	565 0.9%	807 1.0%
Historical Annual Growth (2000 to 2010)	372 0.9%	561 1.1%	977 1.5%	2,033 2.6%
Estimated Population Density (2018)	58 psm	20 psm	11 psm	9 psm
Trade Area Size	78.51 sq mi	314.04 sq mi	706.78 sq mi	1,256.52 sq mi
<b>Households</b>				
Estimated Households (2018)	1,689	2,312	2,990	4,121
Projected Households (2023)	1,752	2,398	3,102	4,276
Census Households (2010)	1,504	2,040	2,628	3,604
Census Households (2000)	1,302	1,740	2,123	2,673
Estimated Households with Children (2018)	610 36.1%	834 36.0%	1,026 34.3%	1,345 32.6%
Estimated Average Household Size (2018)	2.69	2.72	2.67	2.61
<b>Average Household Income</b>				
Estimated Average Household Income (2018)	\$72,976	\$77,017	\$74,086	\$77,593
Projected Average Household Income (2023)	\$83,571	\$89,227	\$85,504	\$89,600
Estimated Average Family Income (2018)	\$84,080	\$88,799	\$83,814	\$84,387
<b>Median Household Income</b>				
Estimated Median Household Income (2018)	\$61,872	\$63,175	\$59,668	\$63,458
Projected Median Household Income (2023)	\$70,287	\$72,058	\$67,991	\$72,348
Estimated Median Family Income (2018)	\$75,029	\$76,053	\$70,425	\$72,980
<b>Per Capita Income</b>				
Estimated Per Capita Income (2018)	\$27,049	\$28,227	\$27,667	\$29,731
Projected Per Capita Income (2023)	\$30,693	\$32,416	\$31,655	\$34,017
Estimated Per Capita Income 5 Year Growth	\$3,645 13.5%	\$4,189 14.8%	\$3,987 14.4%	\$4,286 14.4%
Estimated Average Household Net Worth (2018)	\$659,852	\$651,990	\$624,985	\$662,570
<b>Daytime Demos (2018)</b>				
Total Businesses	353	359	491	550
Total Employees	2,714	2,739	3,444	3,773
Company Headquarter Businesses	2 0.6%	2 0.6%	2 0.4%	2 0.4%
Company Headquarter Employees	249 9.2%	249 9.1%	249 7.2%	249 6.6%
Employee Population per Business	7.7	7.6	7.0	6.9
Residential Population per Business	12.9	17.6	16.3	19.6

This report was produced using data from private and government sources deemed to be reliable. The information herein is provided without representation or warranty.



# EXPANDED PROFILE

2000-2010 Census, 2018 Estimates with 2023 Projections

Calculated using Weighted Block Centroid from Block Groups

Lat/Lon: 42.7187/-110.9321

RF5

## 679 Washington St

### Afton, WY 83110

	5 mi radius		10 mi radius		15 mi radius		20 mi radius	
<b>Race &amp; Ethnicity</b>								
White (2018)	4,325	94.7%	6,014	95.2%	7,622	95.1%	10,222	95.0%
Black or African American (2018)	42	0.9%	49	0.8%	53	0.7%	65	0.6%
American Indian or Alaska Native (2018)	30	0.7%	36	0.6%	44	0.5%	64	0.6%
Asian (2018)	10	0.2%	14	0.2%	26	0.3%	49	0.5%
Hawaiian or Pacific Islander (2018)	-	-	-	-	-	-	-	-
Other Race (2018)	85	1.9%	111	1.8%	156	1.9%	219	2.0%
Two or More Races (2018)	75	1.6%	94	1.5%	115	1.4%	146	1.4%
Not Hispanic or Latino Population (2018)	4,410	96.6%	6,109	96.7%	7,719	96.3%	10,340	96.1%
Hispanic or Latino Population (2018)	156	3.4%	210	3.3%	297	3.7%	425	3.9%
Not Hispanic or Latino Population (2023)	4,613	96.6%	6,387	96.6%	8,073	96.3%	10,823	96.0%
Hispanic or Latino Population (2023)	165	3.4%	222	3.4%	314	3.7%	448	4.0%
Not Hispanic or Latino Population (2010)	4,178	97.1%	5,727	97.1%	7,213	96.8%	9,619	96.6%
Hispanic or Latino Population (2010)	126	2.9%	169	2.9%	238	3.2%	339	3.4%
Not Hispanic or Latino Population (2000)	3,848	97.9%	5,223	97.9%	6,347	98.0%	7,781	98.2%
Hispanic or Latino Population (2000)	84	2.1%	112	2.1%	127	2.0%	144	1.8%
Projected Hispanic Annual Growth (2018 to 2023)	9	1.2%	13	1.2%	17	1.2%	23	1.1%
Historic Hispanic Annual Growth (2000 to 2018)	72	4.7%	97	4.8%	170	7.4%	281	10.8%
<b>Age Distribution (2018)</b>								
Age Under 5	341	7.5%	471	7.5%	580	7.2%	755	7.0%
Age 5 to 9 Years	384	8.4%	528	8.4%	641	8.0%	827	7.7%
Age 10 to 14 Years	418	9.2%	581	9.2%	721	9.0%	923	8.6%
Age 15 to 19 Years	373	8.2%	513	8.1%	630	7.9%	774	7.2%
Age 20 to 24 Years	237	5.2%	323	5.1%	397	5.0%	505	4.7%
Age 25 to 29 Years	200	4.4%	276	4.4%	337	4.2%	446	4.1%
Age 30 to 34 Years	221	4.8%	305	4.8%	400	5.0%	568	5.3%
Age 35 to 39 Years	268	5.9%	374	5.9%	488	6.1%	689	6.4%
Age 40 to 44 Years	245	5.4%	341	5.4%	451	5.6%	632	5.9%
Age 45 to 49 Years	241	5.3%	346	5.5%	446	5.6%	605	5.6%
Age 50 to 54 Years	209	4.6%	295	4.7%	389	4.9%	535	5.0%
Age 55 to 59 Years	282	6.2%	400	6.3%	515	6.4%	701	6.5%
Age 60 to 64 Years	320	7.0%	442	7.0%	583	7.3%	819	7.6%
Age 65 to 74 Years	526	11.5%	710	11.2%	915	11.4%	1,283	11.9%
Age 75 to 84 Years	213	4.7%	299	4.7%	383	4.8%	536	5.0%
Age 85 Years or Over	89	2.0%	114	1.8%	140	1.7%	168	1.6%
Median Age	36.0		36.1		37.0		38.1	
<b>Gender Age Distribution (2018)</b>								
Female Population	2,283	50.0%	3,160	50.0%	4,010	50.0%	5,374	49.9%
Age 0 to 19 Years	704	30.8%	990	31.3%	1,228	30.6%	1,582	29.4%
Age 20 to 64 Years	1,132	49.6%	1,569	49.7%	2,021	50.4%	2,768	51.5%
Age 65 Years or Over	446	19.6%	601	19.0%	762	19.0%	1,024	19.1%
Female Median Age	37.6		37.3		38.1		38.8	
Male Population	2,283	50.0%	3,159	50.0%	4,006	50.0%	5,391	50.1%
Age 0 to 19 Years	811	35.5%	1,103	34.9%	1,343	33.5%	1,697	31.5%
Age 20 to 64 Years	1,090	47.7%	1,533	48.5%	1,985	49.6%	2,731	50.7%
Age 65 Years or Over	382	16.7%	522	16.5%	677	16.9%	963	17.9%
Male Median Age	34.4		34.9		35.9		37.3	

This report was produced using data from private and government sources deemed to be reliable. The information herein is provided without representation or warranty.

# EXPANDED PROFILE

2000-2010 Census, 2018 Estimates with 2023 Projections

Calculated using Weighted Block Centroid from Block Groups

Lat/Lon: 42.7187/-110.9321

RF5

## 679 Washington St

Afton, WY 83110

### Household Income Distribution (2018)

	5 mi radius		10 mi radius		15 mi radius		20 mi radius	
HH Income \$200,000 or More	66	3.9%	88	3.8%	107	3.6%	165	4.0%
HH Income \$150,000 to \$199,999	117	6.9%	148	6.4%	185	6.2%	269	6.5%
HH Income \$100,000 to \$149,999	257	15.2%	383	16.6%	460	15.4%	663	16.1%
HH Income \$75,000 to \$99,999	255	15.1%	375	16.2%	466	15.6%	685	16.6%
HH Income \$50,000 to \$74,999	383	22.7%	503	21.7%	609	20.4%	782	19.0%
HH Income \$35,000 to \$49,999	199	11.8%	292	12.6%	390	13.1%	523	12.7%
HH Income \$25,000 to \$34,999	140	8.3%	174	7.5%	302	10.1%	466	11.3%
HH Income \$15,000 to \$24,999	153	9.1%	187	8.1%	272	9.1%	332	8.1%
HH Income Under \$15,000	119	7.0%	163	7.0%	198	6.6%	236	5.7%
HH Income \$35,000 or More	1,277	75.6%	1,789	77.4%	2,218	74.2%	3,088	74.9%
HH Income \$75,000 or More	694	41.1%	994	43.0%	1,218	40.7%	1,782	43.2%

### Housing (2018)

	5 mi radius		10 mi radius		15 mi radius		20 mi radius	
Total Housing Units	1,942		2,677		3,511		4,991	
Housing Units Occupied	1,689	87.0%	2,312	86.4%	2,990	85.2%	4,121	82.6%
Housing Units Owner-Occupied	1,330	78.8%	1,861	80.5%	2,390	79.9%	3,343	81.1%
Housing Units, Renter-Occupied	359	21.2%	452	19.5%	600	20.1%	778	18.9%
Housing Units, Vacant	253	13.0%	365	13.6%	521	14.8%	870	17.4%

### Marital Status (2018)

	5 mi radius		10 mi radius		15 mi radius		20 mi radius	
Never Married	789	23.1%	1,071	22.6%	1,379	22.7%	1,941	23.5%
Currently Married	2,075	60.6%	2,863	60.4%	3,625	59.7%	4,809	58.2%
Separated	110	3.2%	171	3.6%	245	4.0%	294	3.6%
Widowed	150	4.4%	199	4.2%	274	4.5%	421	5.1%
Divorced	300	8.8%	434	9.2%	552	9.1%	794	9.6%

### Household Type (2018)

	5 mi radius		10 mi radius		15 mi radius		20 mi radius	
Population Family	4,054	88.8%	5,665	89.6%	7,146	89.1%	9,525	88.5%
Population Non-Family	488	10.7%	630	10.0%	846	10.5%	1,214	11.3%
Population Group Quarters	24	0.5%	24	0.4%	24	0.3%	25	0.2%
Family Households	1,254	74.2%	1,748	75.6%	2,234	74.7%	3,058	74.2%
Non-Family Households	435	25.8%	564	24.4%	756	25.3%	1,063	25.8%
Married Couple with Children	481	23.2%	664	23.2%	806	22.2%	1,062	22.1%
Average Family Household Size	3.2		3.2		3.2		3.1	

### Household Size (2018)

	5 mi radius		10 mi radius		15 mi radius		20 mi radius	
1 Person Households	395	23.4%	515	22.3%	684	22.9%	936	22.7%
2 Person Households	633	37.5%	878	38.0%	1,155	38.6%	1,669	40.5%
3 Person Households	208	12.3%	287	12.4%	365	12.2%	507	12.3%
4 Person Households	191	11.3%	270	11.7%	342	11.5%	461	11.2%
5 Person Households	125	7.4%	171	7.4%	216	7.2%	282	6.8%
6 or More Person Households	136	8.0%	192	8.3%	226	7.6%	267	6.5%

### Household Vehicles (2018)

	5 mi radius		10 mi radius		15 mi radius		20 mi radius	
Households with 0 Vehicles Available	33	1.9%	54	2.3%	56	1.9%	59	1.4%
Households with 1 Vehicles Available	356	21.1%	444	19.2%	600	20.1%	839	20.4%
Households with 2 or More Vehicles Available	1,300	77.0%	1,814	78.5%	2,334	78.1%	3,223	78.2%
Total Vehicles Available	3,967		5,523		7,116		9,813	
Average Vehicles Per Household	2.3		2.4		2.4		2.4	

This report was produced using data from private and government sources deemed to be reliable. The information herein is provided without representation or warranty.

# EXPANDED PROFILE

2000-2010 Census, 2018 Estimates with 2023 Projections

Calculated using Weighted Block Centroid from Block Groups

Lat/Lon: 42.7187/-110.9321

RF5

## 679 Washington St

### Afton, WY 83110

	5 mi radius	10 mi radius	15 mi radius	20 mi radius
<b>Labor Force (2018)</b>				
Estimated Labor Population Age 16 Years or Over	3,350	4,637	5,948	8,106
Estimated Civilian Employed	2,143 64.0%	3,052 65.8%	3,837 64.5%	5,094 62.8%
Estimated Civilian Unemployed	109 3.2%	149 3.2%	206 3.5%	268 3.3%
Estimated in Armed Forces	- -	- -	2 -	12 0.1%
Estimated Not in Labor Force	1,098 32.8%	1,435 30.9%	1,903 32.0%	2,732 33.7%
Unemployment Rate	3.2%	3.2%	3.5%	3.3%
<b>Occupation (2015)</b>				
Occupation: Population Age 16 Years or Over	2,153	3,054	3,845	5,108
Management, Business, Financial Operations	241 11.2%	346 11.3%	508 13.2%	693 13.6%
Professional, Related	517 24.0%	750 24.6%	829 21.6%	954 18.7%
Service	320 14.9%	469 15.3%	607 15.8%	890 17.4%
Sales, Office	430 20.0%	574 18.8%	733 19.1%	974 19.1%
Farming, Fishing, Forestry	- -	1 -	3 0.1%	8 0.2%
Construct, Extraction, Maintenance	371 17.3%	553 18.1%	729 19.0%	982 19.2%
Production, Transport Material Moving	273 12.7%	363 11.9%	436 11.3%	607 11.9%
White Collar Workers	1,188 55.2%	1,669 54.7%	2,070 53.8%	2,621 51.3%
Blue Collar Workers	964 44.8%	1,385 45.3%	1,775 46.2%	2,488 48.7%
<b>Consumer Expenditure (2018)</b>				
Total Household Expenditure	\$95.8 M	\$136 M	\$171 M	\$244 M
Total Non-Retail Expenditure	\$49.6 M 51.7%	\$70.4 M 51.7%	\$88.5 M 51.7%	\$126 M 51.7%
Total Retail Expenditure	\$46.3 M 48.3%	\$65.8 M 48.3%	\$82.8 M 48.3%	\$118 M 48.3%
Apparel	\$3.34 M 3.5%	\$4.75 M 3.5%	\$5.96 M 3.5%	\$8.48 M 3.5%
Contributions	\$4.15 M 4.3%	\$5.86 M 4.3%	\$7.35 M 4.3%	\$10.6 M 4.3%
Education	\$3.43 M 3.6%	\$4.88 M 3.6%	\$6.05 M 3.5%	\$8.69 M 3.6%
Entertainment	\$5.40 M 5.6%	\$7.68 M 5.6%	\$9.63 M 5.6%	\$13.7 M 5.6%
Food and Beverages	\$14.1 M 14.7%	\$20.0 M 14.7%	\$25.2 M 14.7%	\$35.7 M 14.7%
Furnishings and Equipment	\$3.31 M 3.5%	\$4.72 M 3.5%	\$5.90 M 3.4%	\$8.45 M 3.5%
Gifts	\$2.35 M 2.5%	\$3.34 M 2.5%	\$4.18 M 2.4%	\$6.01 M 2.5%
Health Care	\$7.66 M 8.0%	\$10.9 M 8.0%	\$13.8 M 8.0%	\$19.6 M 8.0%
Household Operations	\$2.71 M 2.8%	\$3.86 M 2.8%	\$4.82 M 2.8%	\$6.91 M 2.8%
Miscellaneous Expenses	\$1.41 M 1.5%	\$2.00 M 1.5%	\$2.51 M 1.5%	\$3.57 M 1.5%
Personal Care	\$1.24 M 1.3%	\$1.76 M 1.3%	\$2.22 M 1.3%	\$3.15 M 1.3%
Personal Insurance	\$707 K 0.7%	\$1.00 M 0.7%	\$1.25 M 0.7%	\$1.80 M 0.7%
Reading	\$212 K 0.2%	\$301 K 0.2%	\$379 K 0.2%	\$540 K 0.2%
Shelter	\$19.8 M 20.6%	\$28.1 M 20.6%	\$35.3 M 20.6%	\$50.3 M 20.6%
Tobacco	\$585 K 0.6%	\$830 K 0.6%	\$1.06 M 0.6%	\$1.48 M 0.6%
Transportation	\$18.3 M 19.1%	\$26.1 M 19.2%	\$32.9 M 19.2%	\$46.7 M 19.1%
Utilities	\$7.15 M 7.5%	\$10.2 M 7.5%	\$12.8 M 7.5%	\$18.2 M 7.4%
<b>Educational Attainment (2018)</b>				
Adult Population Age 25 Years or Over	2,814	3,903	5,048	6,981
Elementary (Grade Level 0 to 8)	19 0.7%	33 0.9%	52 1.0%	68 1.0%
Some High School (Grade Level 9 to 11)	85 3.0%	109 2.8%	232 4.6%	383 5.5%
High School Graduate	710 25.2%	1,047 26.8%	1,399 27.7%	1,997 28.6%
Some College	1,007 35.8%	1,386 35.5%	1,671 33.1%	2,175 31.2%
Associate Degree Only	383 13.6%	498 12.7%	620 12.3%	774 11.1%
Bachelor Degree Only	382 13.6%	523 13.4%	678 13.4%	1,049 15.0%
Graduate Degree	227 8.1%	307 7.9%	396 7.9%	535 7.7%

This report was produced using data from private and government sources deemed to be reliable. The information herein is provided without representation or warranty.

# EXPANDED PROFILE

2000-2010 Census, 2018 Estimates with 2023 Projections

Calculated using Weighted Block Centroid from Block Groups

Lat/Lon: 42.7187/-110.9321

RF5

## 679 Washington St

Afton, WY 83110

	5 mi radius		10 mi radius		15 mi radius		20 mi radius	
<b>Units In Structure (2015)</b>								
1 Detached Unit	1,494	99.4%	2,012	98.6%	2,449	93.2%	3,445	95.6%
1 Attached Unit	14	0.9%	27	1.3%	43	1.6%	74	2.1%
2 to 4 Units	57	3.8%	62	3.1%	102	3.9%	125	3.5%
5 to 9 Units	8	0.5%	11	0.5%	44	1.7%	57	1.6%
10 to 19 Units	9	0.6%	9	0.4%	9	0.3%	9	0.2%
20 to 49 Units	-	-	-	-	-	-	-	-
50 or More Units	-	-	-	-	-	-	1	-
Mobile Home or Trailer	114	7.6%	192	9.4%	349	13.3%	423	11.7%
Other Structure	-	-	-	-	-	-	-	-
<b>Homes Built By Year (2015)</b>								
Homes Built 2010 or later	1	0.1%	1	0.1%	3	0.1%	4	0.1%
Homes Built 2000 to 2009	269	17.9%	435	21.3%	708	26.9%	1,248	34.6%
Homes Built 1990 to 1999	255	17.0%	342	16.8%	430	16.4%	604	16.8%
Homes Built 1980 to 1989	147	9.8%	215	10.5%	367	14.0%	548	15.2%
Homes Built 1970 to 1979	432	28.7%	578	28.3%	677	25.8%	774	21.5%
Homes Built 1960 to 1969	70	4.7%	95	4.7%	105	4.0%	124	3.4%
Homes Built 1950 to 1959	149	9.9%	180	8.8%	197	7.5%	214	5.9%
Homes Built Before 1949	339	22.6%	404	19.8%	440	16.8%	543	15.1%
<b>Home Values (2015)</b>								
Home Values \$1,000,000 or More	-	-	1	-	9	0.5%	17	0.6%
Home Values \$500,000 to \$999,999	18	1.6%	32	2.0%	60	2.9%	87	3.0%
Home Values \$400,000 to \$499,999	59	5.0%	76	4.7%	107	5.1%	195	6.7%
Home Values \$300,000 to \$399,999	187	15.9%	258	15.8%	370	17.7%	593	20.4%
Home Values \$200,000 to \$299,999	423	36.0%	600	36.9%	702	33.6%	952	32.8%
Home Values \$150,000 to \$199,999	353	30.0%	461	28.3%	530	25.4%	748	25.8%
Home Values \$100,000 to \$149,999	186	15.9%	252	15.5%	295	14.1%	339	11.7%
Home Values \$70,000 to \$99,999	23	2.0%	28	1.7%	50	2.4%	69	2.4%
Home Values \$50,000 to \$69,999	20	1.7%	25	1.5%	67	3.2%	102	3.5%
Home Values \$25,000 to \$49,999	20	1.7%	40	2.5%	42	2.0%	43	1.5%
Home Values Under \$25,000	45	3.8%	83	5.1%	108	5.2%	133	4.6%
Owner-Occupied Median Home Value	\$202,488		\$203,400		\$213,076		\$223,270	
Renter-Occupied Median Rent	\$646		\$638		\$649		\$653	
<b>Transportation To Work (2015)</b>								
Drive to Work Alone	1,697	74.4%	2,319	73.6%	2,870	71.3%	3,847	71.2%
Drive to Work in Carpool	281	12.3%	394	12.5%	522	13.0%	716	13.3%
Travel to Work by Public Transportation	19	0.8%	25	0.8%	41	1.0%	80	1.5%
Drive to Work on Motorcycle	-	-	-	-	-	-	-	-
Walk or Bicycle to Work	103	4.5%	137	4.4%	173	4.3%	196	3.6%
Other Means	10	0.4%	13	0.4%	13	0.3%	13	0.2%
Work at Home	170	7.5%	263	8.4%	404	10.0%	548	10.2%
<b>Travel Time (2015)</b>								
Travel to Work in 14 Minutes or Less	1,297	61.5%	1,748	60.5%	1,874	51.8%	2,072	42.7%
Travel to Work in 15 to 29 Minutes	345	16.4%	558	19.3%	839	23.2%	1,195	24.6%
Travel to Work in 30 to 59 Minutes	205	9.7%	292	10.1%	398	11.0%	703	14.5%
Travel to Work in 60 Minutes or More	145	6.9%	198	6.8%	345	9.5%	614	12.7%
Average Minutes Travel to Work	10.0		10.9		13.0		17.2	

This report was produced using data from private and government sources deemed to be reliable. The information herein is provided without representation or warranty.