



4101-4115 Howard Ave

4101-4115 Howard Ave, Kensington, MD 20895

Craig Schwartz

”
craig.schwartz@mitigationtechnologies.com
(443) 538-6967

4101-4115 Howard Ave

\$17.00 /SF/YR

Desirable location just north of the Washington Beltway Montgomery County is one of the nation's most affluent sub-markets which continue to grow in population attracting people with its proximity to a variety of quality educational facilities. The civilian labor force is generally considered talented and highly educated. This is further evidenced by the concentration of high technology industries within its boundaries and until the COVID-19 pandemic, had generally low unemployment rate with respect to regional and national averages. It is anticipated that Montgomery County, despite the COVID-19 pandemic, will continue to attract an economic base and maintain relatively low levels of unemployment due to the quality of its workforce, its proximity to the District of Columbia and its biosciences research...

- Easy access to public transit.



Rental Rate:	\$17.00 /SF/YR
Property Type:	Industrial
Property Subtype:	Warehouse
Rentable Building Area:	22,200 SF
Year Built:	1972
Taxes:	\$0.17 USD/SF/MO
Operating Expenses:	\$0.08 USD/SF/MO
Rental Rate Mo:	\$1.42 /SF/MO

1st Floor Ste 4101

Space Available	7,500 SF
Rental Rate	\$17.00 /SF/YR
Contiguous Area	11,700 SF
Date Available	Now
Service Type	Triple Net (NNN)
Space Type	Relet
Space Use	Flex
Lease Term	Negotiable

\$17 NNN Price Is Negotiable/OBO 16 foot ceilings on this brick and block building, Great location near the Washington Beltway, Bethesda and Rockville MD. Comes with 11 dedicated parking spaces.

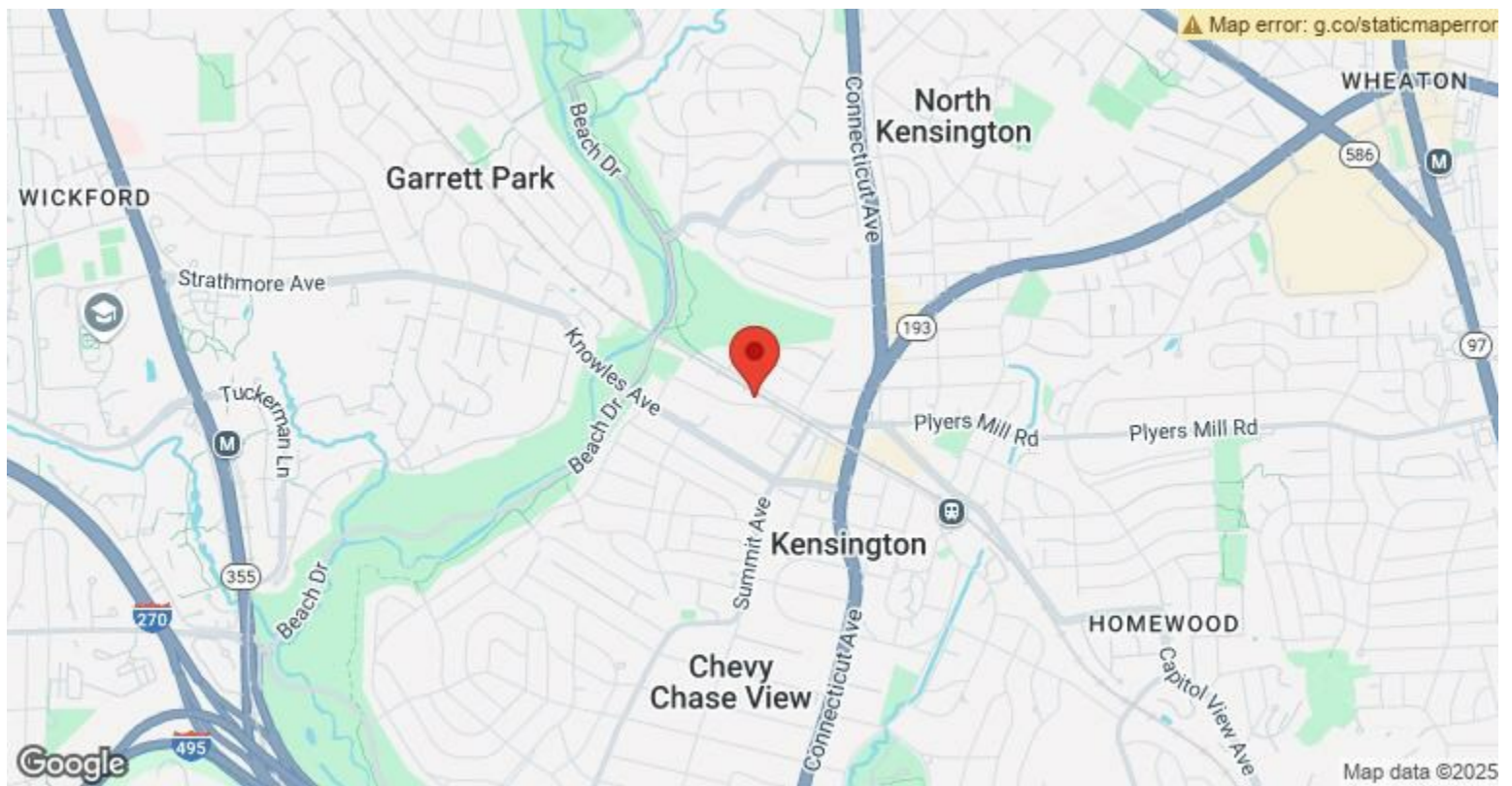
1

1st Floor Ste 4115

Space Available	4,200 SF
Rental Rate	\$17.00 /SF/YR
Contiguous Area	11,700 SF
Date Available	Now
Service Type	Triple Net (NNN)
Space Type	Relet
Space Use	Flex
Lease Term	Negotiable

\$17 NNN Price Is Negotiable/OBO 16 foot ceilings on this brick and block building, Great location near the Washington Beltway, Bethesda and Rockville MD. Comes with 5 dedicated parking spaces.

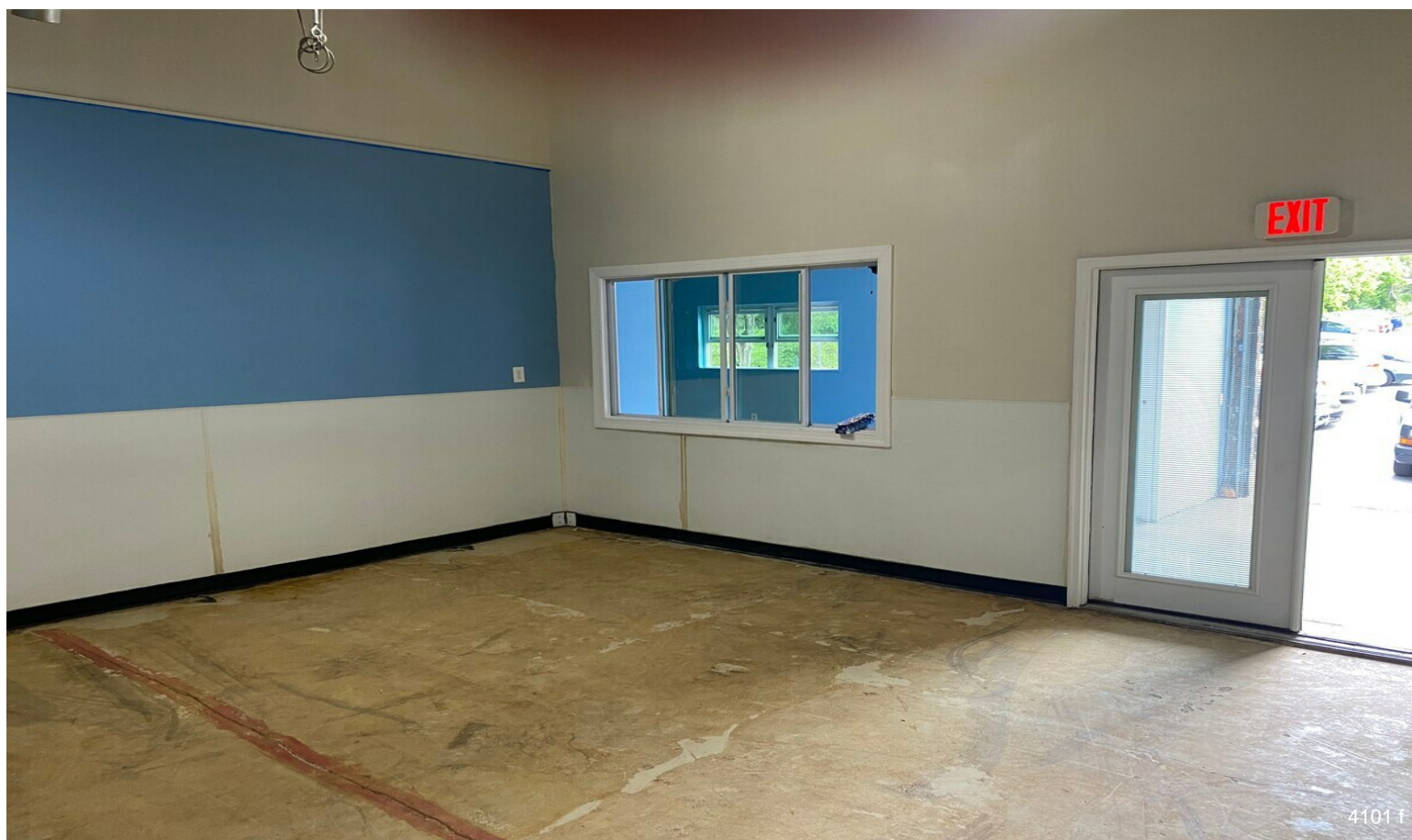
2



4101-4115 Howard Ave, Kensington, MD 20895

Desirable location just north of the Washington Beltway
Montgomery County is one of the nation's most affluent sub-markets which continue to grow in population attracting people with its proximity to a variety of quality educational facilities. The civilian labor force is generally considered talented and highly educated. This is further evidenced by the concentration of high technology industries within its boundaries and until the COVID-19 pandemic, had generally low unemployment rate with respect to regional and national averages. It is anticipated that Montgomery County, despite the COVID-19 pandemic, will continue to attract an economic base and maintain relatively low levels of unemployment due to the quality of its workforce, its proximity to the District of Columbia and its biosciences research

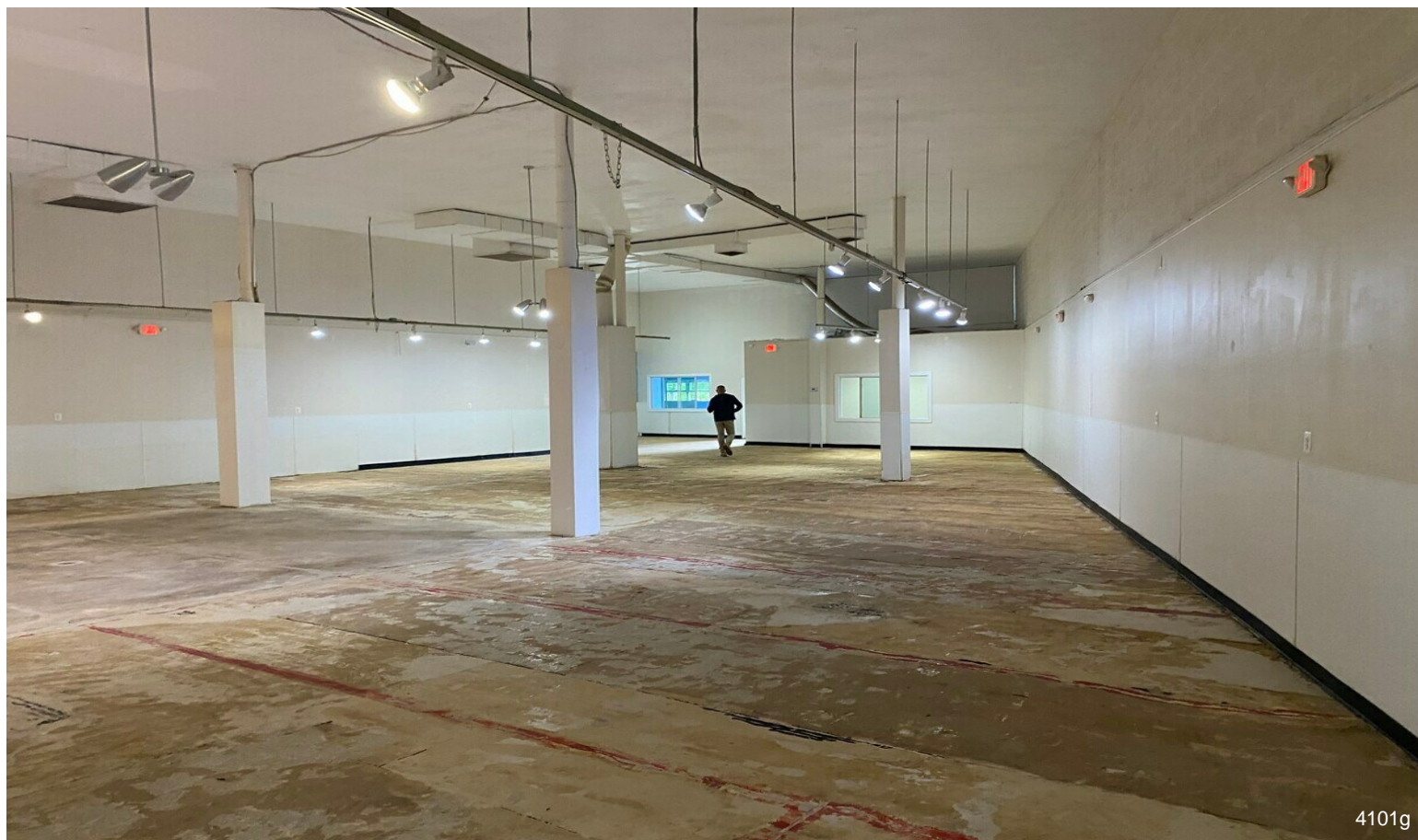
Property Photos



Property Photos



4101e



4101g

Property Photos



Property Photos



4115 b



4115 e

Property Photos



4115 a