



# KATY BUILDING

701 COMMERCE STREET  
DALLAS, TX



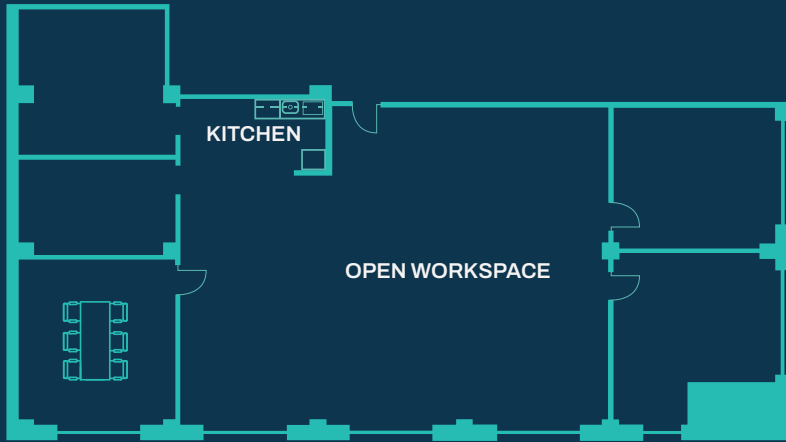
# EXPANSIVE<sup>®</sup>

workspace

## TEAM SUITE 400A

### \$6899/MONTH

AVERAGE \$153/PERSON  
ACCOMODATES HEADCOUNT OF UP TO 45



[CLICK TO VIEW A VIRTUAL 3D TOUR](#)

3163 SQUARE FEET OF PRIVATE SPACE PLUS 3000+SF OF SHARED WORKSPACE, COWORKING LOUNGE, KITCHEN, PHONE BOOTHS & MORE

### SOLUTION INCLUDES:



FULLY FURNISHED



DIRECT FIBER INTERNET & WIFI ACCESS



EXPANSIVE LOUNGE



COFFEE & TEA



24/7 ACCESS



ON-SITE MGMT



HIGH SPEED PRINTERS



UTILITIES



MOTHERS' ROOM



COMMUNITY APP



BIKE ROOM



NETWORK ACCESS



EXPLORE OUR AVAILABLE TEAM SUITE OPTIONS TODAY!

**CONTACT BRENNAN WALKER**

469.461.4196 | [brennan.walker@expansive.com](mailto:brennan.walker@expansive.com)