



333 Broadway Street Paducah, KY

- Premier High Rise Office Building in Downtown Paducah
- Rental Rate: \$14.00 Full Service Gross
- On-site Property Management
- Space available from 158 to 6,081 Square feet
- Year Built: 1911
- Total Property SF: 86,203



∴ Steven Boemer
Vice President
414.351.6312
steven.boemer@usbank.com

∴ Steve Raysich
Transaction Manager
262-252-3007
steven.raysich@usbank.com

∴ Daniel Suazo
Assistant Vice President
270-575-5154
daniel.suazo@usbank.com



Stacking Plan

10	6,081 SF	6,081 SF Avail \$14.00	
9	5,848 SF	1,976 SF Avail \$14.00	Occupied
8	5,848 SF	696 SF Avail \$14.00	Occupied
7	5,848 SF	5,848 SF Avail \$14.00	
6	5,848 SF	2,258SF Avail \$14.00	Occupied
5	5,848 SF	Occupied	
4	5,848 SF	2,455 Sf Avail \$14.00	Occupied
3	15,089 SF	Occupied	
2	15,089 SF	Occupied	
1	15089 SF	US BANK	

Suite/ Unit Number: 4th Floor
 Space Available: 2,455 SF
 Minimum divisible: 250 SF

Suite/ Unit Number: 8th Floor
 Space Available: 696 SF
 Minimum divisible: 696SF

Suite/ Unit Number: 6th Floor
 Space Available: 2,258SF
 Minimum divisible: 264 SF

Suite/ Unit Number: 9th Floor
 Space Available: 1,976SF
 Minimum divisible: 250 SF

Suite/ Unit Number: 7th Floor
 Space Available: 5,848 SF
 Minimum divisible: 1,000 SF

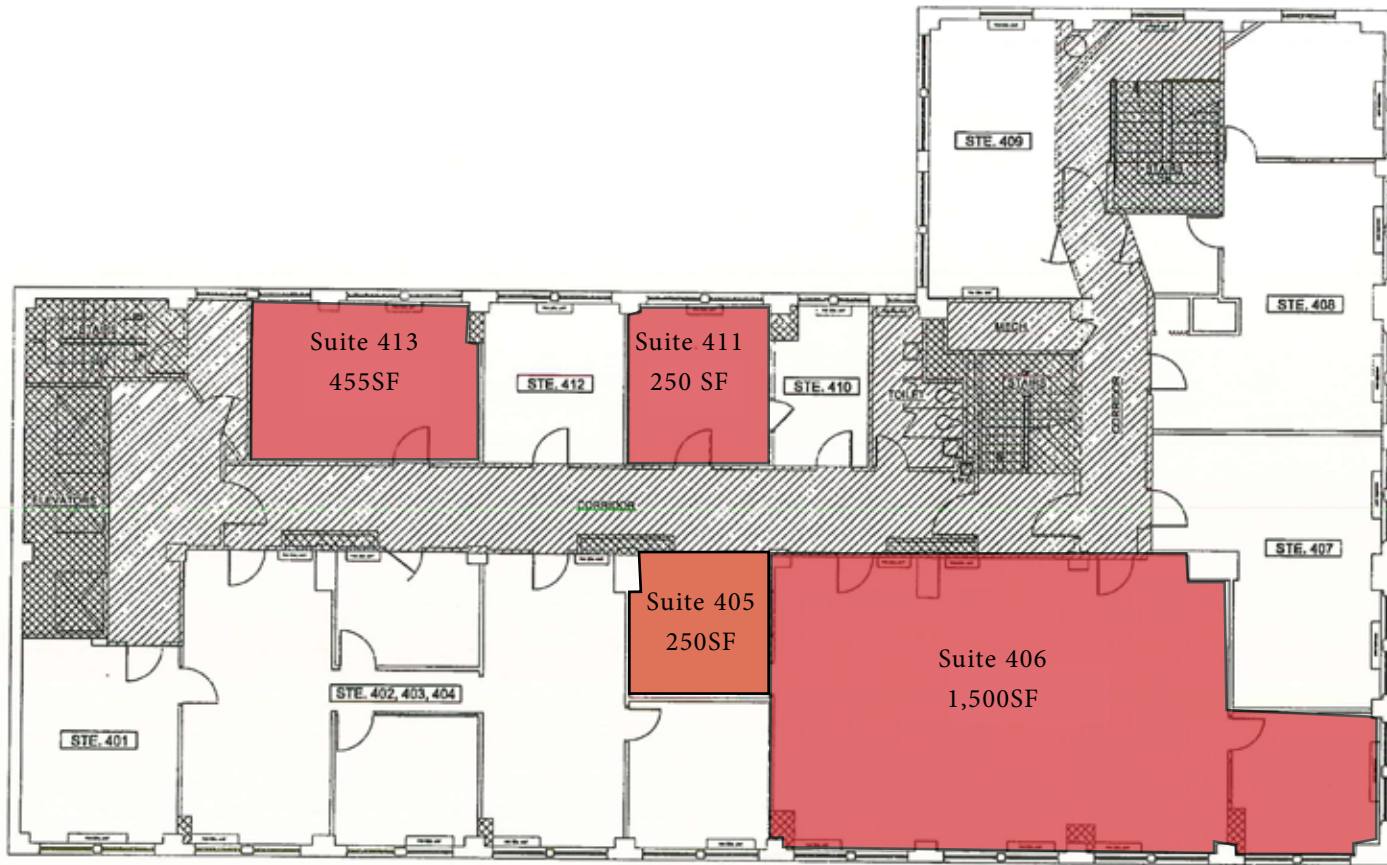
Suite/ Unit Number: 10th Floor
 Space Available: 6,081 SF
 Minimum divisible: 1,000 SF

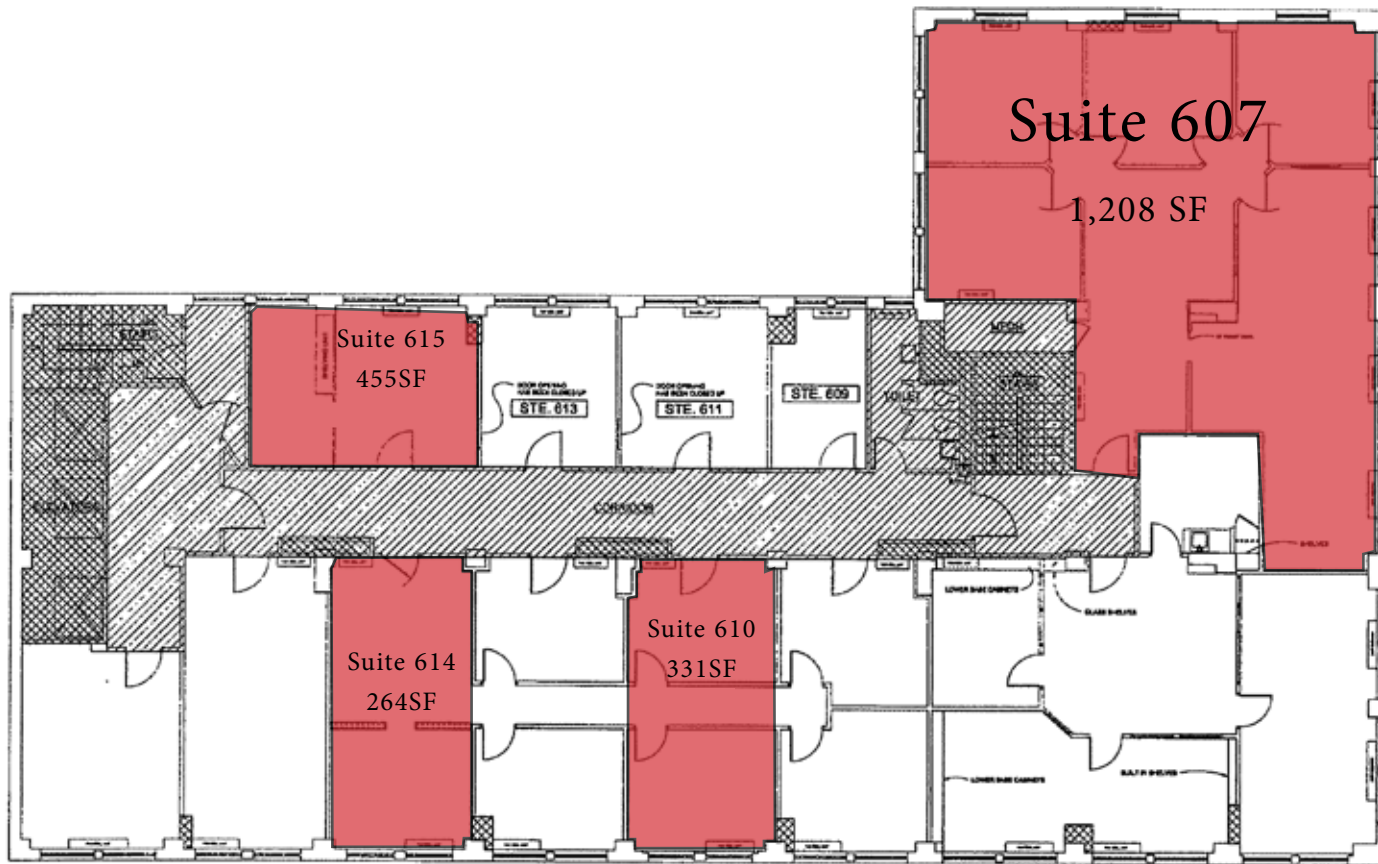
:: Steven Boemer
 Vice President
 414.351.6312
 steven.boemer@usbank.com

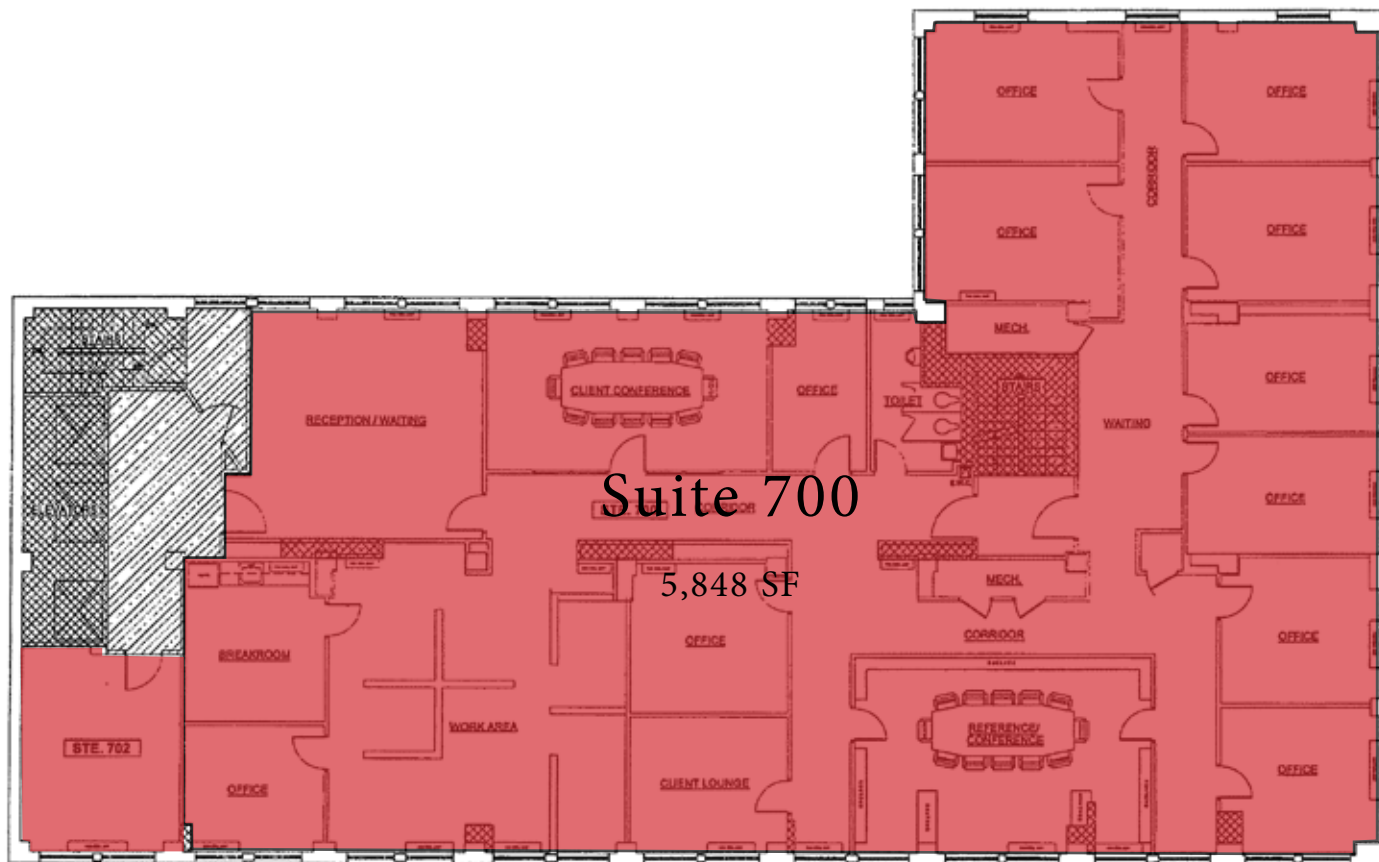
:: Steve Raysich
 Transaction Manager
 262-252-3007
 steven.raysich@usbank.com

:: Daniel Suazo
 Assistant Vice President
 270-575-5154
 daniel.suazo@usbank.com





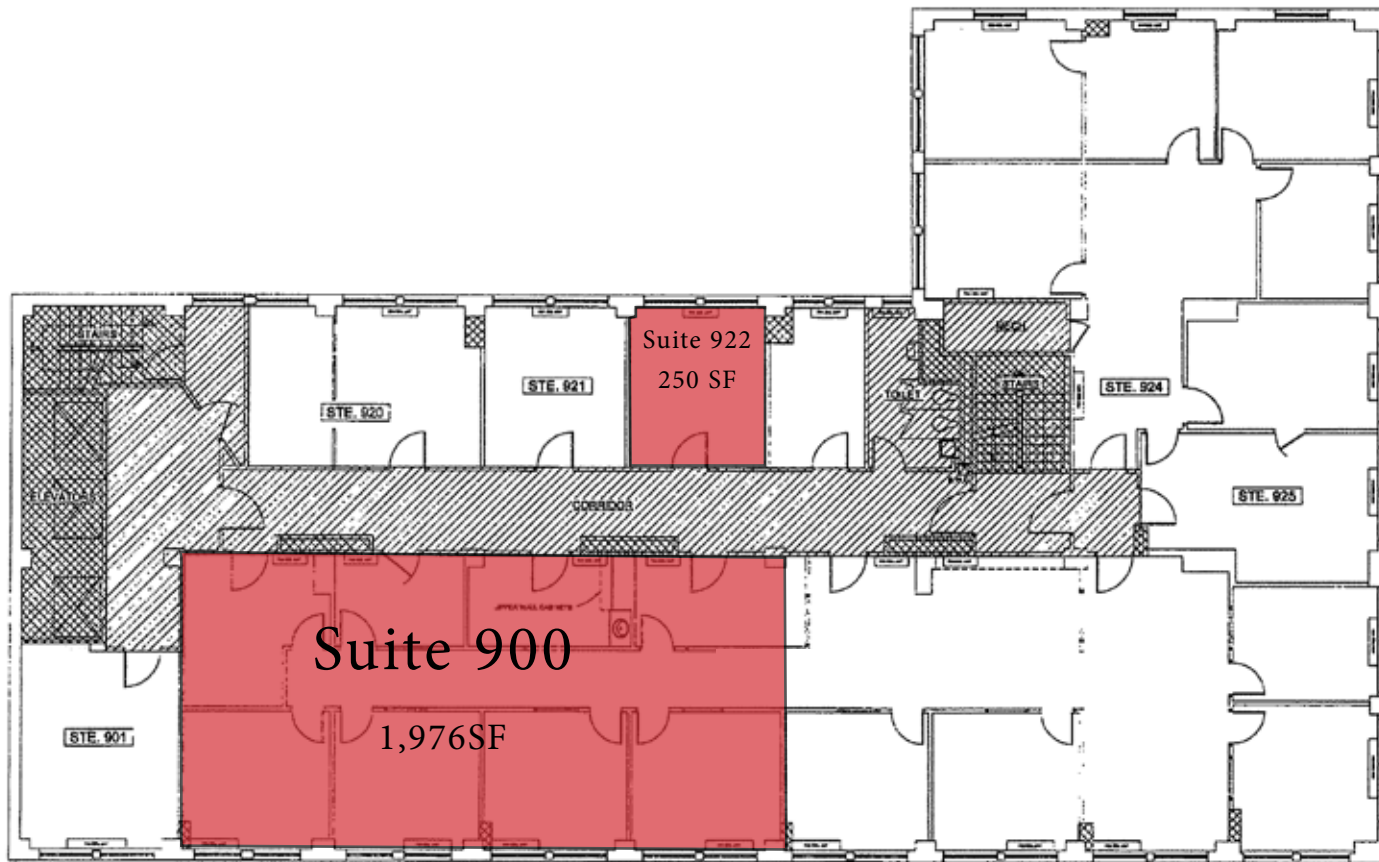


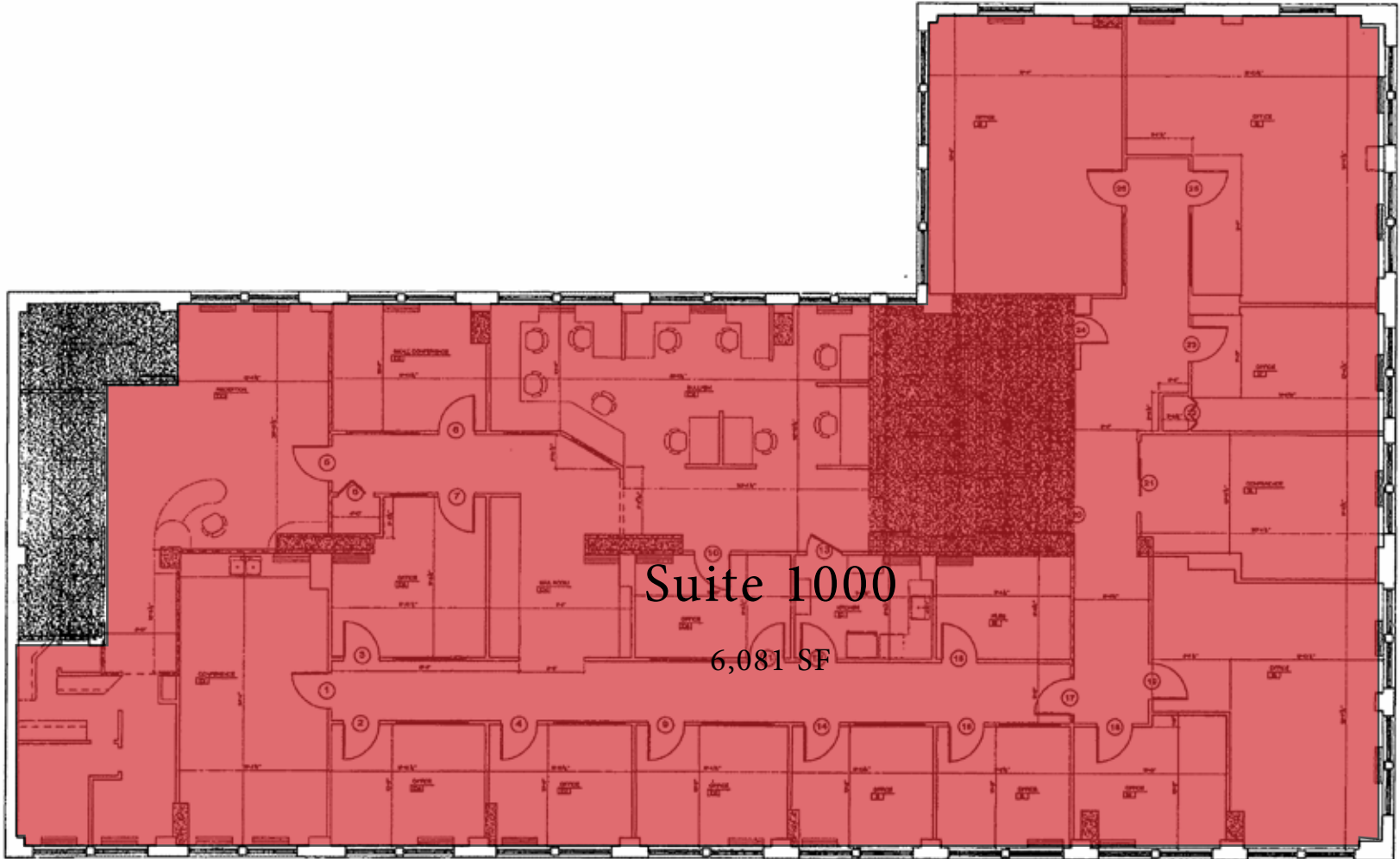


Suite 700

5,848 SF







Suite 1000

6,081 SF