

1 GRACECHURCH STREET, LONDON EC3

666 - 1,444 SQ FT



DESCRIPTION

1 Gracechurch Street is a refurbished self-contained office building arranged over five floors with excellent natural daylight and attractive views over St. Peter's Church and Leadenhall Market.

LOCATION

A prominently located position on the North West side of Gracechurch Street opposite the entrance to Leadenhall Market. Public transport links are excellent with Bank, Monument, Cannon Street, Liverpool Street and Fenchurch Street stations all within a five minute walk.

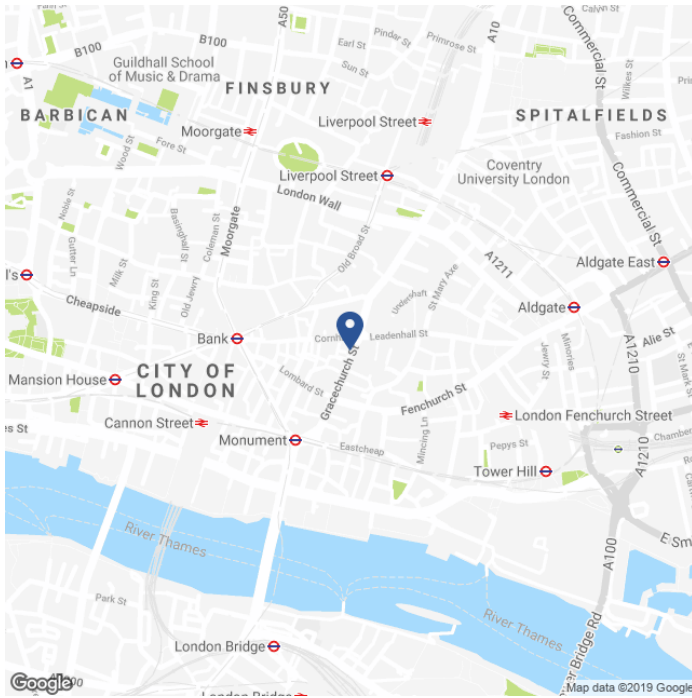
SPECIFICATION

- Newly refurbished offices.
- Newly refurbished reception.
- Air conditioning.
- LG compliant suspended lighting.
- Passenger lift.
- Male & Female WC's.
- Bike racks and showers.

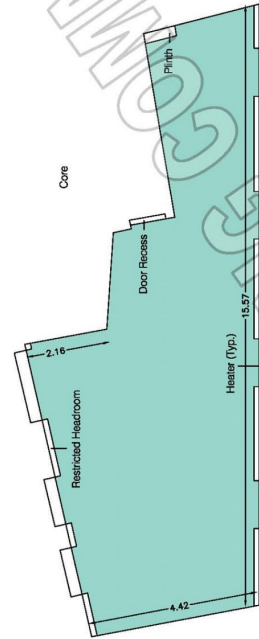
AVAILABLE ACCOMMODATION

FLOOR	SQ FT	SQ M
FIFTH	666	62
FIRST - U/O	778	72
TOTAL	1,444	134

MAP



FIFTH FLOOR



TENURE

Lease:	New Lease for a term by arrangement direct from the landlord.
Guide Rent:	£65.00 per sq.ft.
Rates Estimate:	£20.34 per sq.ft (5th). £19.96 per sq.ft (1st).
Service Charge:	£12.00 per sq.ft.
VAT:	Elected.
EPC Rating:	C68.

CONTACT

Tom Kemp
+44 (0)207 100 5555
tom@hk-london.com

Stephen Foster
+44 (0)207 100 5555
stephen@hk-london.com

Johnny Armour
+44 (0)207 100 5555
johnny@hk-london.com