

DMCP

12651 & 12671 HIGH BLUFF DRIVE

SAN DIEGO, CA 92130



DMCP

STEVE BRUCE

Vice Chair & Co-Lead
t 858 291 1414
steve.bruce@colliers.com
CA RE Lic. #01455744

CHRIS HIGH, SIOR

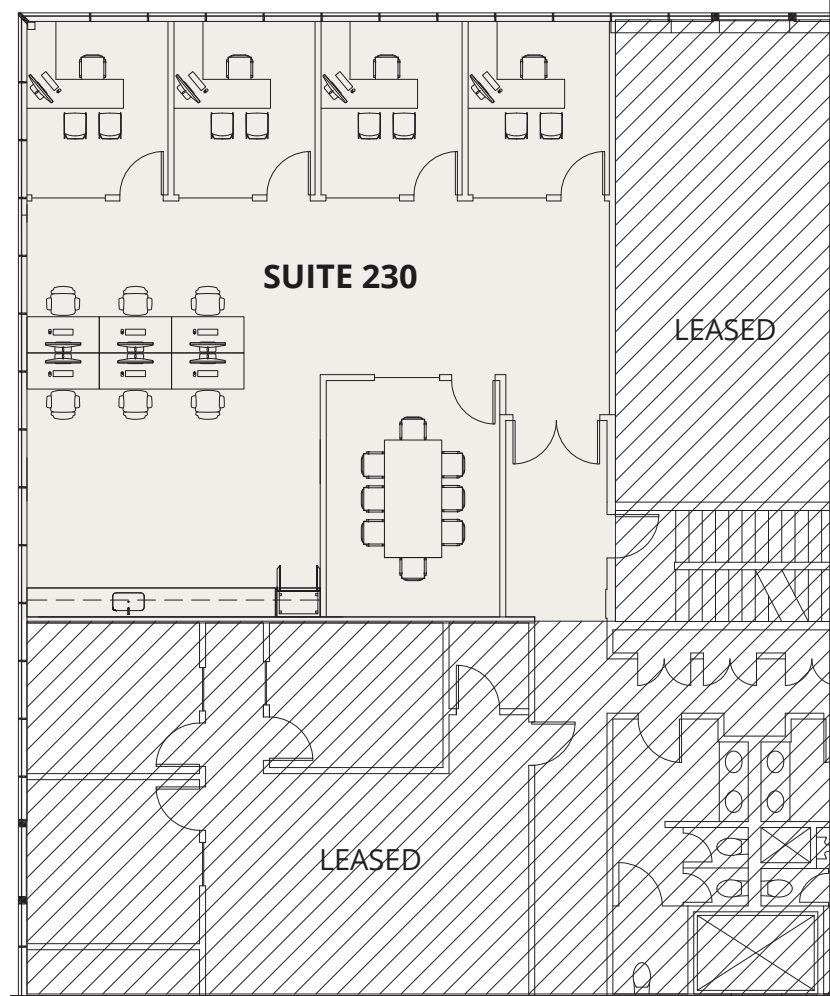
Vice Chair & Co-Lead
t 858 291 1413
chris.high@colliers.com
CA RE Lic. #01734544

CONOR EVANS

Vice President
t 858 291 1415
conor.evans@colliers.com
CA RE Lic. #01963596

**12651 & 12671
HIGH BLUFF DRIVE**
SAN DIEGO, CA 92130





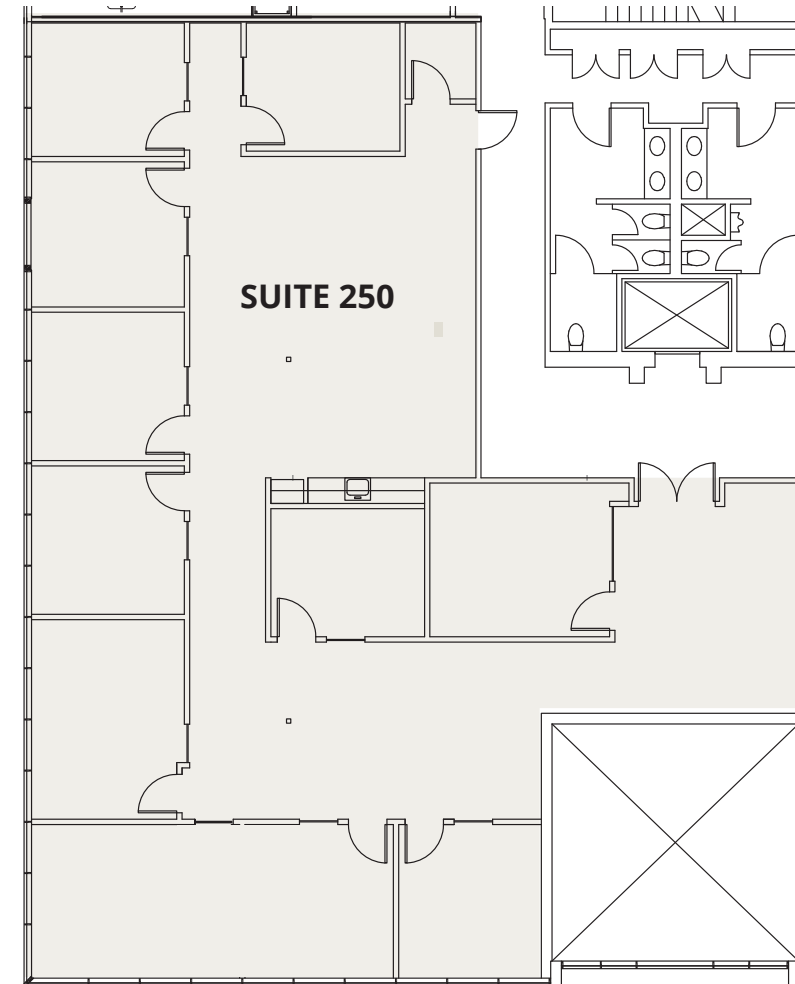
12651 BLDG
Floor 2

Suite 230 - 1,809 RSF Available

LEASE RATE: \$5.25 + E

AVAILABILITY | 12651 BLDG

Suite	RSF	
230	1,809	Creative Spec Suite



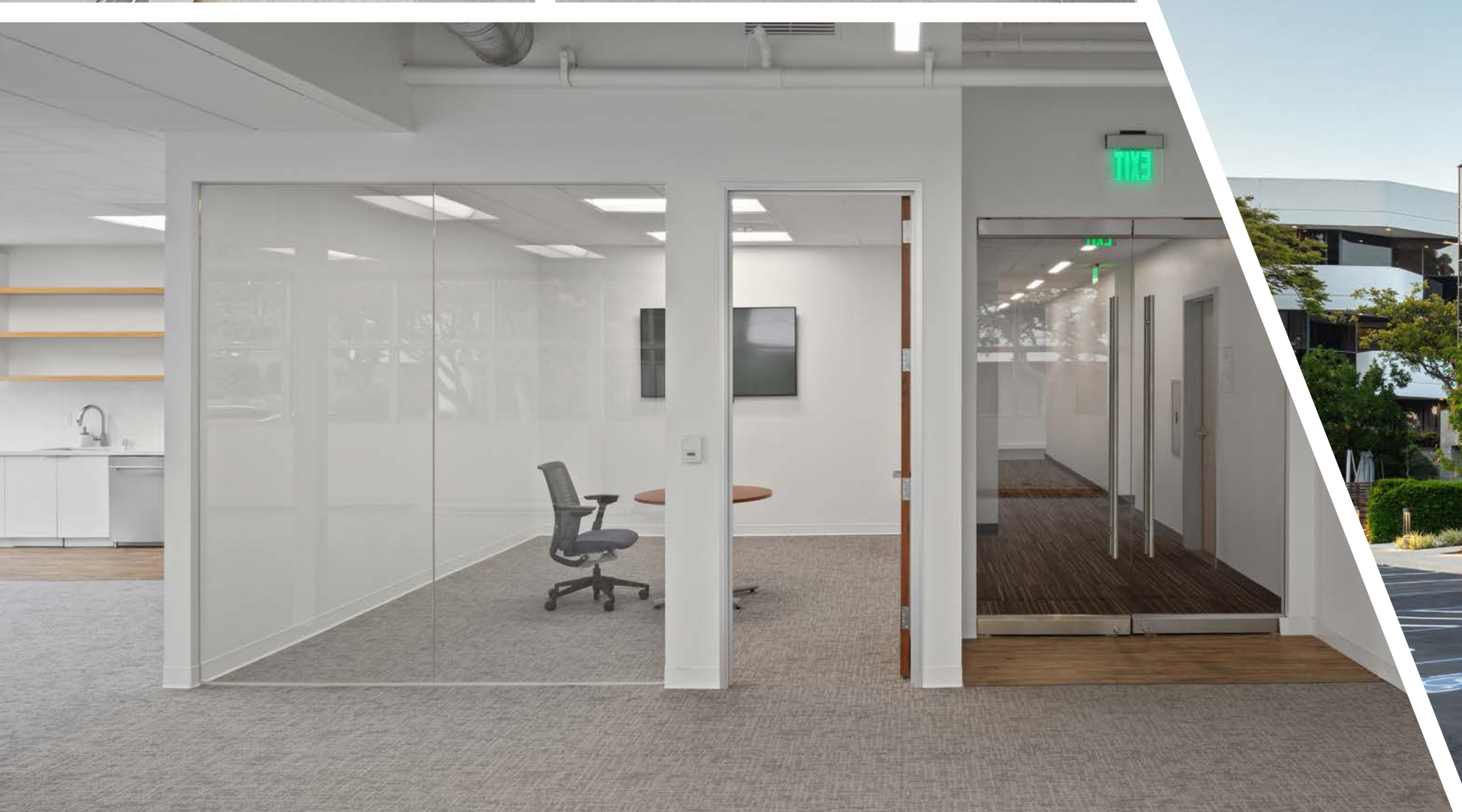
12651 BLDG
Floor 2

Suite 250 - 4,112 RSF Available

LEASE RATE: \$5.25 + E

AVAILABILITY | 12651 BLDG

Suite	RSF	
250	4,112	Available in 60 days Contiguous with Suite 230 (5,921 SF)





PROPERTY DETAILS

- DMcp is located within the 102-acre San Diego Corporate Center
- Two Building Office Project: One three-story ±34,462 SF Class B office building and One three-story ±38,863 SF Class B office building
- Built in 1984 with renovations completed in 2017
- 3.5 / 1000 Parking Ratio
- Open floor plans with abundant natural light
- Convenient access to Interstate 5 and Highway 56
- Several “walkable” restaurant options including Shake Shack, Cava and North Italia
- Direct access to walking and biking path behind the project
- 3 minute walk to One Paseo
- Adjacent to prominent Del Mar, Rancho Santa Fe, Fairbanks Ranch and La Jolla neighborhoods.
- 5 minute drive to Old Del Mar and the beach

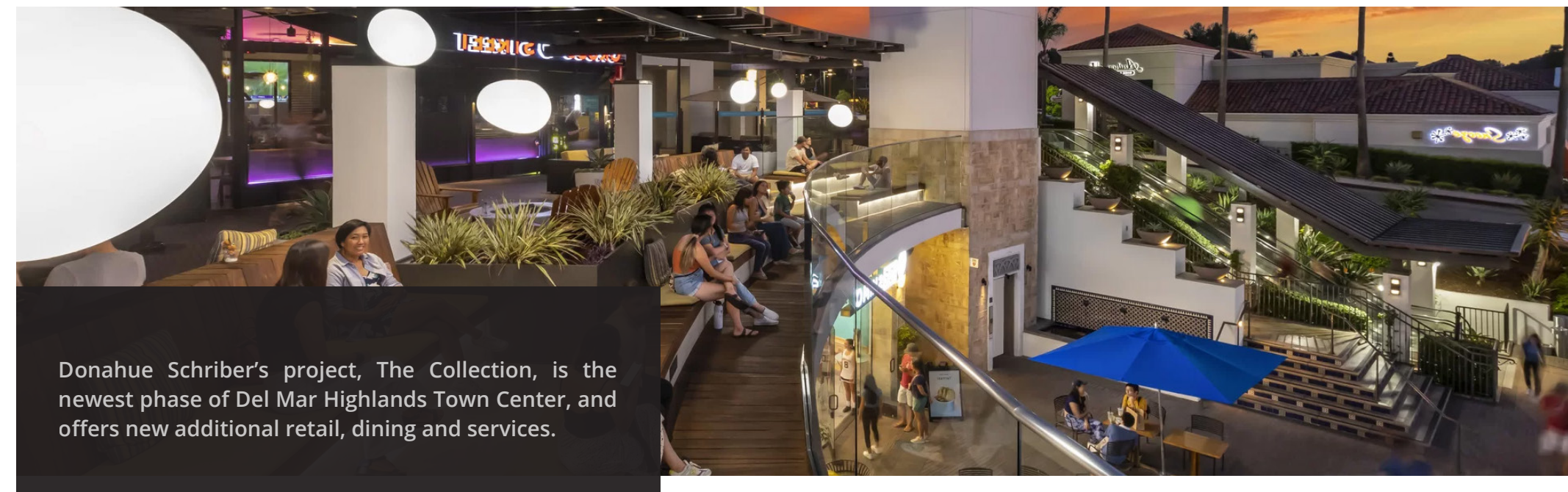
ON- SITE AMENITIES

- Recently renovated building lobbies, common areas and restrooms
- Indoor / Outdoor Fitness Center with showers and lockers
- Private patios in some spaces
- Ample parking with covered stall options



LOCATION
RETAIL AMENITIES

1. Del Mar Highlands Towne Ctr
2. One Paseo
(Office/Retail/Residential)
3. Carmel County Plaza
4. Beachside Del Mar
5. Piazza Carmel



DMCP

12651 & 12671 HIGH BLUFF DRIVE
SAN DIEGO, CA 92130

STEVE BRUCE

Vice Chair & Co-Lead
t 858 291 1414
steve.bruce@colliers.com
CA RE Lic. #01455744

CHRIS HIGH, SIOR

Vice Chair & Co-Lead
t 858 291 1413
chris.high@colliers.com
CA RE Lic. #01734544

CONOR EVANS

Vice President
t 858 291 1415
conor.evans@colliers.com
CA RE Lic. #01963596



©2024 Colliers International. Information herein has been obtained from sources deemed reliable, however its accuracy cannot be guaranteed. The user is required to conduct their own due diligence and verification.