



WEST OLYMPIA OFFICE AVAILABILITY NEAR THE OLYMPIA AUTO MALL



2114 CATON WAY SW, SUITE 100, OLYMPIA, WA | PERCIVAL CREEK OFFICE PARK

LISTING INFORMATION

Lease part or all of the lower level of a distinctive Westside Olympia office building near the Olympia Auto Mall. The suite features two wings connected by an entry area, along with a central elevator and stairwell, and offers a mix of private offices, open work areas, a kitchen/break room, restrooms, and storage. Abundant natural light, high ceilings, and quality architectural details create a professional environment with convenient multi-level access.

- ▶ Westside location near Olympia Auto Mall and Capital Mall
- ▶ On-site parking
- ▶ Easy I-5/101 freeway access
- ▶ Base rent includes utilities
- ▶ Available June 1st.

SUITE 101: ±1,490

SUITE 102: ±1,603

RENT: \$26 SF/YEAR
FULL SERVICE

CBA# 44418902



rants.group/2114CatonWaySW_100



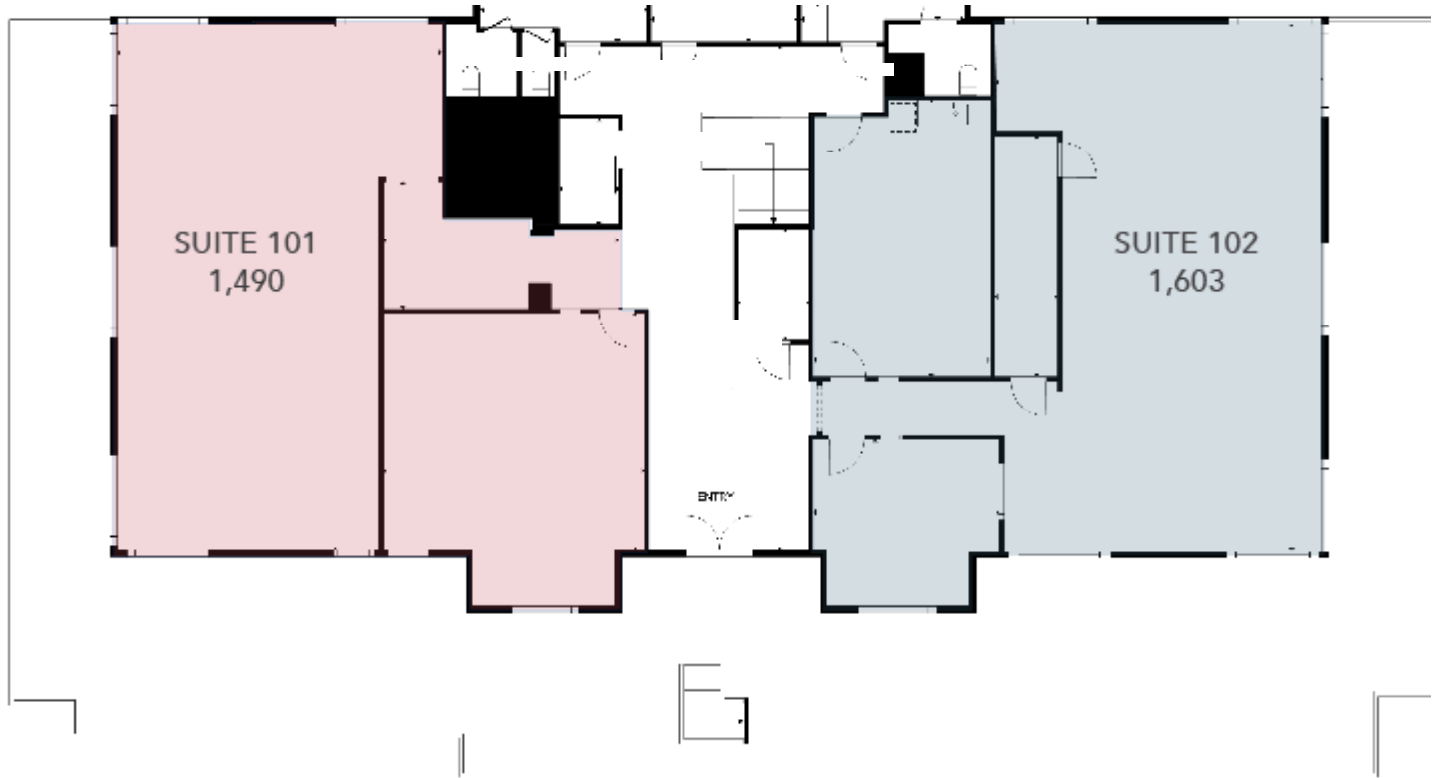
This information, while obtained from sources we deem reliable, is not guaranteed. It is provided without any representation, warranty or guarantee, expressed or implied as to its accuracy. Prospective buyer or tenant should conduct an independent investigation and verification of all matters deemed to be material, including, but not limited to, statements of income and expenses. Consult your attorney, accountant, or other professional advisor.



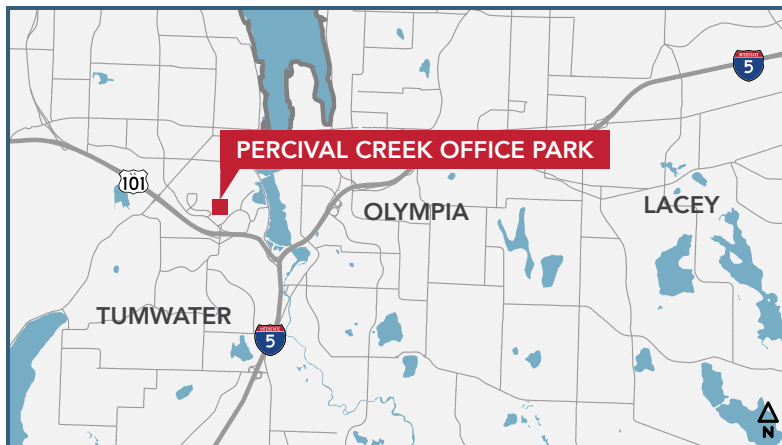
Carolyn Graden, CCIM
MANAGING BROKER
(360) 763-4994
carolyn@rantsgroup.com

360-943-8060
RANTSGROUP.com

2114 CATON WAY SW, OLYMPIA, WA | PERCIVAL CREEK OFFICE PARK



THIS FLOORPLAN IS NOT TO SCALE
SIZES AND DIMENSIONS ARE APPROXIMATE, ACTUAL MAY VARY.



CONTACT

Carolyn Graden, CCIM
MANAGING BROKER
(360) 763-4994
carolyn@rantsgroup.com

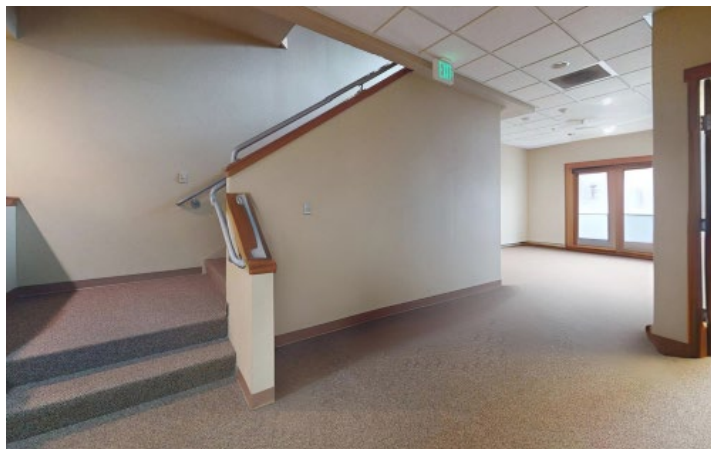


rants.group/2114CatonWaySW_100

This information, while obtained from sources we deem reliable, is not guaranteed. It is provided without any representation, warranty or guarantee, expressed or implied as to its accuracy. Prospective buyer or tenant should conduct an independent investigation and verification of all matters deemed to be material, including, but not limited to, statements of income and expenses. Consult your attorney, accountant, or other professional advisor.

360-943-8060 | RANTSGROUP.com

2114 Caton Way SW, Olympia, WA | PERCIVAL CREEK OFFICE PARK



CONTACT

Carolyn Graden, CCIM
MANAGING BROKER
(360) 763-4994
carolyn@rantsgroup.com



rantsgroup.com/2114CatonWaySW_100

This information, while obtained from sources we deem reliable, is not guaranteed. It is provided without any representation, warranty or guarantee, expressed or implied as to its accuracy. Prospective buyer or tenant should conduct an independent investigation and verification of all matters deemed to be material, including, but not limited to, statements of income and expenses. Consult your attorney, accountant, or other professional advisor.

360-943-8060 | RANTSGROUP.com