



THALHIMER

INDUSTRIAL LAND FOR LEASE
240 Progress Drive
Chesapeake, VA 23322



Laydown Yard Available For Lease

For more information, contact:

ELLIS COLTHORPE

Associate
757 213 4160
ellis.colthorpe@thalhimer.com

BRETT SAIN

Associate
757 213 4153
brett.sain@thalhimer.com

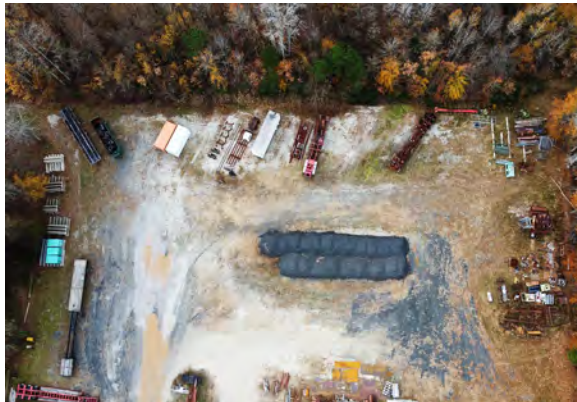
The Town Center of Virginia Beach
222 Central Park Ave., Suite 1500
Virginia Beach, VA 23462
www.thalhimer.com

Independently Owned and Operated / A Member of the Cushman & Wakefield Alliance

Cushman & Wakefield / Thalhimer © 2015. No warranty or representation, express or implied, is made to the accuracy or completeness of the information contained herein, and same is submitted subject to errors, omissions, change of price, rental or other conditions, withdrawal without notice, and to any special listing conditions imposed by the property owner(s). As applicable, we make no representation as to the condition of the property (or properties) in question.

Property Features

- ± 3 Acre Site
- Fully stabilized
- Zoned M-1
- Partially Fenced with Gated Entrance
- Landlord can help facilitate heavy offloading and has a repair shop on adjacent site.
- Ideal for laydown yard or drop lot
- **\$2,500 per acre / per month**



For more information, contact:

ELLIS COLTHORPE

Associate
757 213 4160
ellis.colthorpe@thalhimer.com

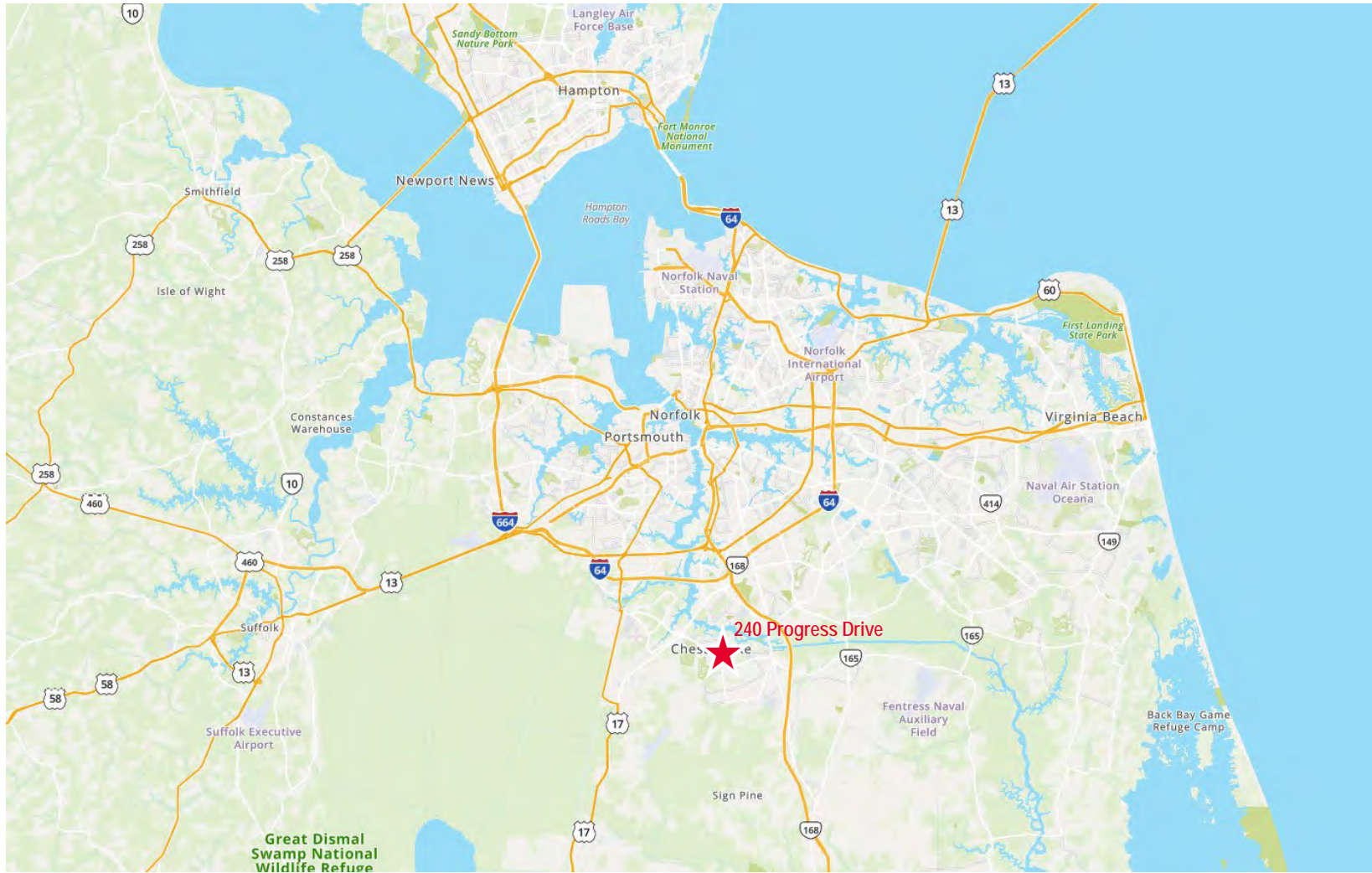
BRETT SAIN

Associate
757 213 4153
brett.sain@thalhimer.com

The Town Center of Virginia Beach
222 Central Park Ave., Suite 1500
Virginia Beach, VA 23462
www.thalhimer.com



INDUSTRIAL LAND FOR LEASE
240 Progress Drive
 Chesapeake, VA 23322



For more information, contact:

ELLIS COLTHORPE
 Associate
 757 213 4160
ellis.colthorpe@thalhimer.com

BRETT SAIN
 Associate
 757 213 4153
brett.sain@thalhimer.com

The Town Center of Virginia Beach
 222 Central Park Ave., Suite 1500
 Virginia Beach, VA 23462
www.thalhimer.com

Independently Owned and Operated / A Member of the Cushman & Wakefield Alliance

Cushman & Wakefield / Thalhimer © 2015. No warranty or representation, express or implied, is made to the accuracy or completeness of the information contained herein, and same is submitted subject to errors, omissions, change of price, rental or other conditions, withdrawal without notice, and to any special listing conditions imposed by the property owner(s). As applicable, we make no representation as to the condition of the property (or properties) in question.