



## Event/Flex Suite for Lease

2931 1st Ave S, Seattle, WA 98134



**AMERICAN LIFE**



**Darrell Sanders**

American Life, Inc.

2450 S 6th Ave, Suite 200, Seattle, WA 98134

[darrells@americanlifeinc.com](mailto:darrells@americanlifeinc.com)

(206) 381-1690 Ext: 126



## Event/Flex Suite for Lease

\$24.00 /SF/YR

Located in the heart of Seattle's SODO neighborhood, 2931 1st Ave S (Building A) offers approximately 7,110 square feet of highly flexible commercial space in the historic Ederer Building.

The space combines dramatic architectural features with modern functionality. Vaulted 25-foot ceilings, exposed structure, and expansive window lines bring in natural light and character. The ground floor includes a large open-span hall, entry lounge, and glass-walled conference room. The mezzanine features three private offices and an additional conference room, creating an ideal mix of open and private work areas.

This property is well suited for creative users, showrooms, event operators, and more

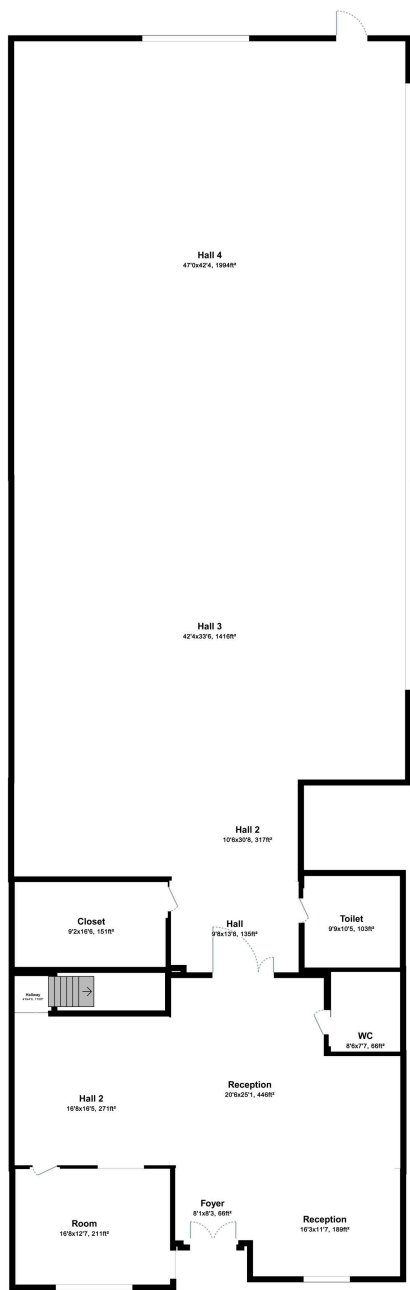


Rental Rate:	\$24.00 /SF/YR
Property Type:	Retail
Property Subtype:	Freestanding
Gross Leasable Area:	7,110 SF
Year Built:	1919
Walk Score ®:	60 (Somewhat Walkable)
Transit Score ®:	66 (Good Transit)
Rental Rate Mo:	\$2.00 /SF/MO

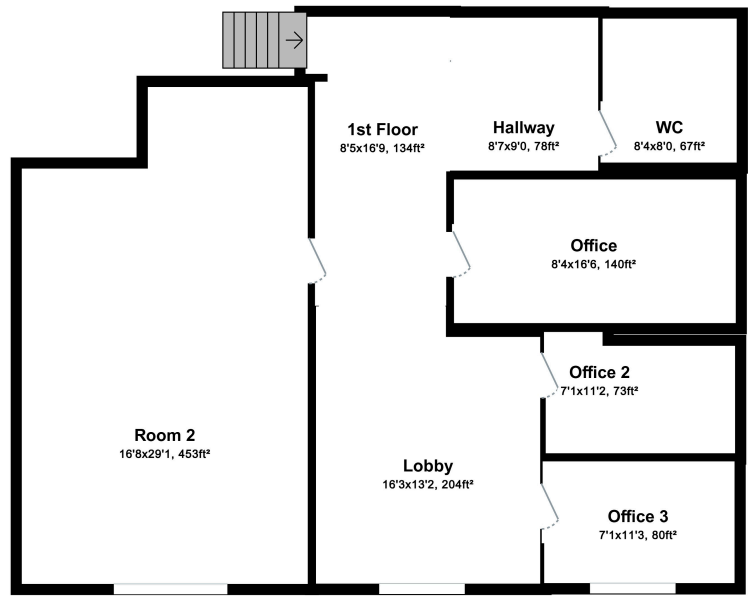
## 1st Floor

Space Available	7,110 SF
Rental Rate	\$24.00 /SF/YR
Date Available	August 01, 2025
Service Type	Triple Net (NNN)
Space Type	Relet
Space Use	Retail
Lease Term	Negotiable

Located in the heart of Seattle's SODO neighborhood, 2931 1st Ave S (Building A) offers approximately 7,110 square feet of highly flexible commercial space in the historic Ederer Building. The space combines dramatic architectural features with modern functionality. Vaulted 25-foot ceilings, exposed structure, and expansive window lines bring in natural light and character. The ground floor includes a large open-span hall, entry lounge, and glass-walled conference room. The mezzanine features three private offices and an additional conference room, creating an ideal mix of open and private work areas. This property is well suited for creative users, showrooms, event operators, production teams, or mission-driven companies looking for a high-impact setting.



Ground Floor

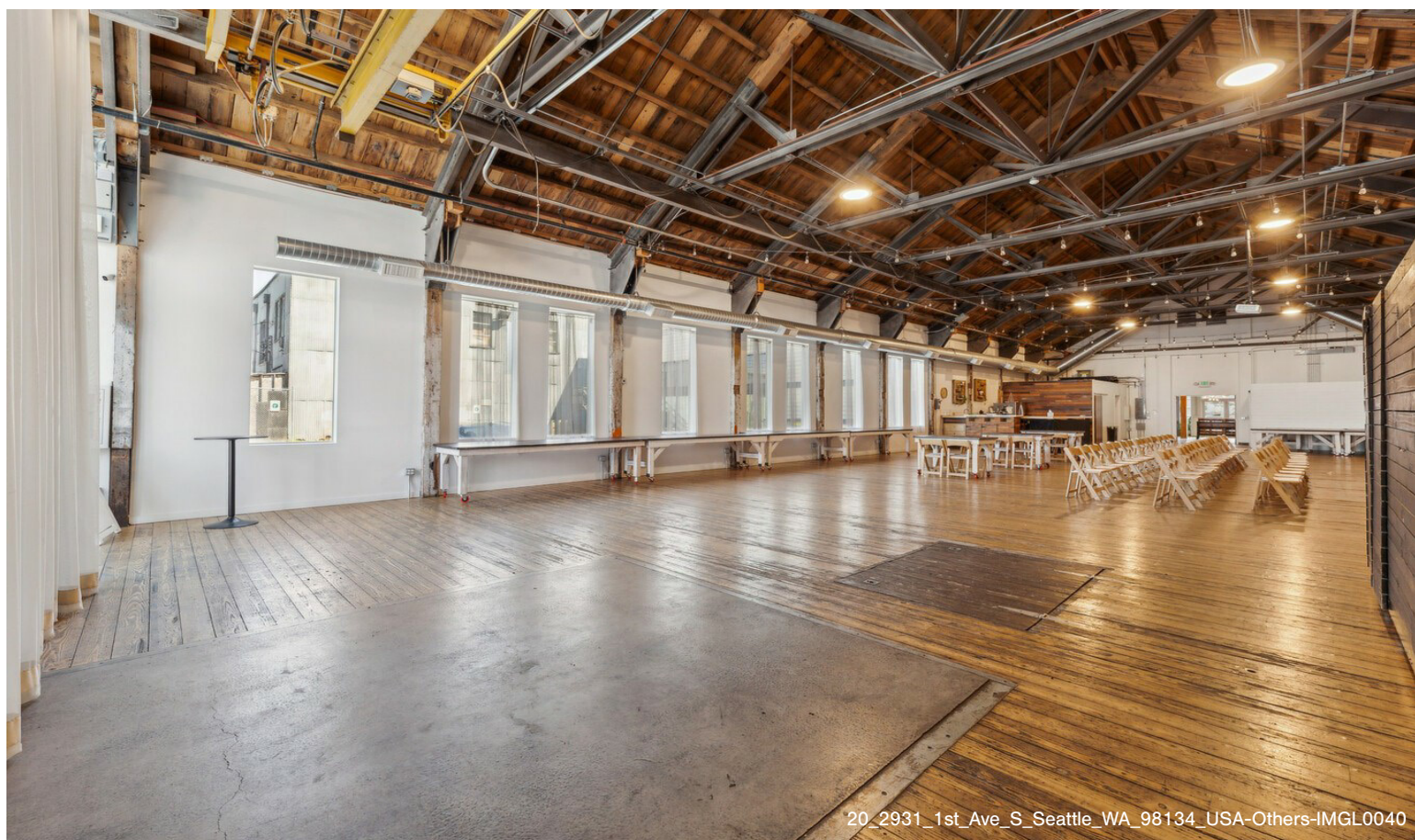


1st Floor

## Property Photos



# Property Photos



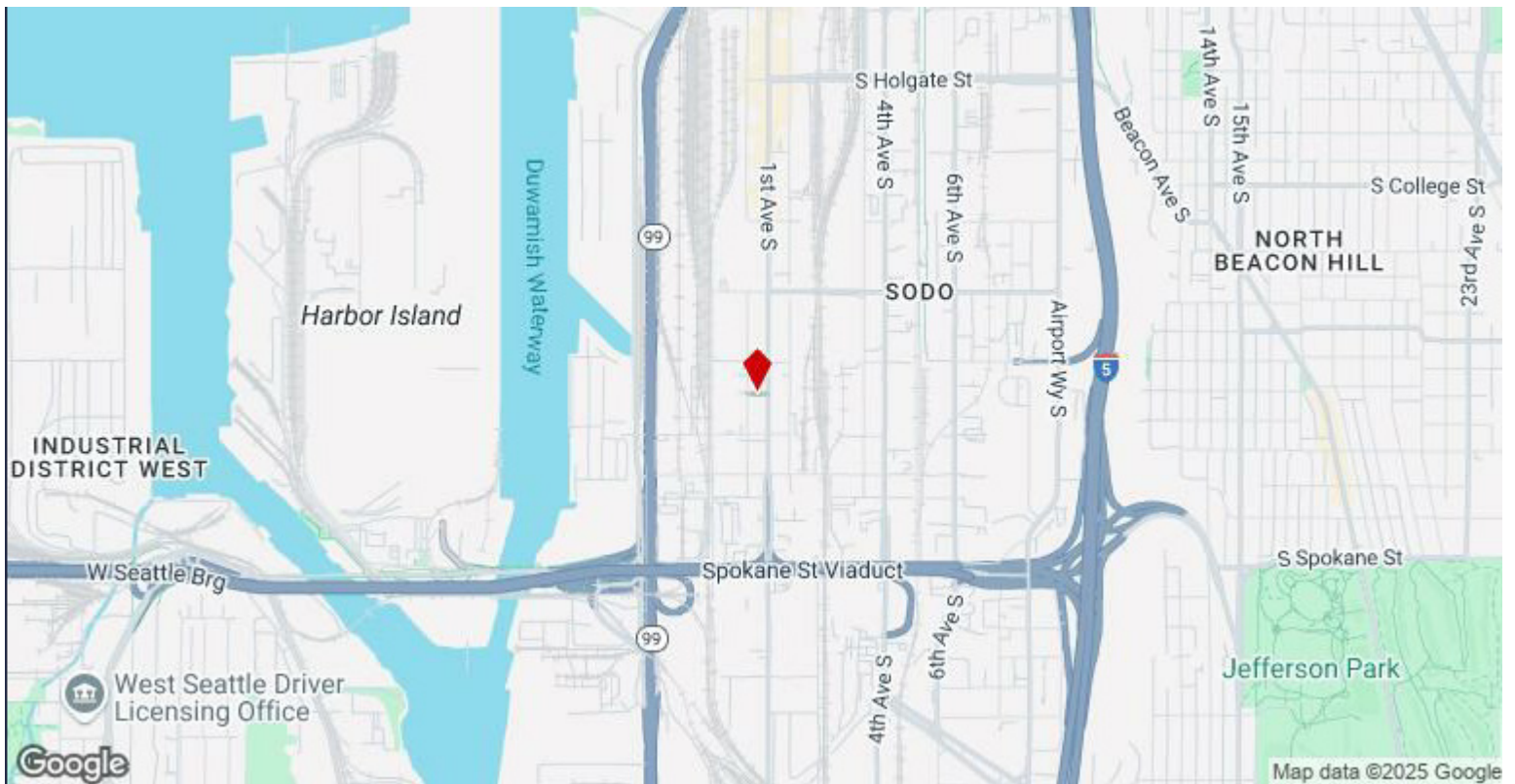
# Property Photos



12\_2931\_1st\_Ave\_S\_Seattle\_WA\_98134\_USA-Living\_room-IMGL0085



Floor Plan



## 2931 1st Ave S, Seattle, WA 98134

Located in the heart of Seattle's SODO neighborhood, 2931 1st Ave S (Building A) offers approximately 7,110 square feet of highly flexible commercial space in the historic Ederer Building.

The space combines dramatic architectural features with modern functionality. Vaulted 25-foot ceilings, exposed structure, and expansive window lines bring in natural light and character. The ground floor includes a large open-span hall, entry lounge, and glass-walled conference room. The mezzanine features three private offices and an additional conference room, creating an ideal mix of open and private work areas.

This property is well suited for creative users, showrooms, event operators, prod