

# PROFESSIONAL OFFICE SPACE AVAILABLE FOR LEASE

7095 N. Chestnut Avenue - Fresno, California



## PROPERTY INFORMATION

Available Space:	1,200± SF
Rent Rate:	\$1.65 per SF per month, NNN
Tenant Improvements:	Negotiable
Zoning:	C-2

## PROPERTY DESCRIPTION

This is a shell condition suite in an office/medical building that is located within the heart of Fresno's medical corridor along Herndon Avenue. It is equidistant between both Clovis Community Hospital and St. Agnes. It has easy access to Freeways 168 and 41. There are numerous ancillary services located in the area such as banking, retail, public transportation and food services.

For Additional Information Please Contact:

**Phil Souza**  
Senior Vice President - Office Division  
559.447.6283  
psouza@pearsonrealty.com  
DRE #00853867

**Jessica Young**  
Marketing Specialist - Office Division  
559.447.6281  
jyoung@pearsonrealty.com  
DRE #01498704



Independently Owned and Operated  
www.newmarkpearson.com

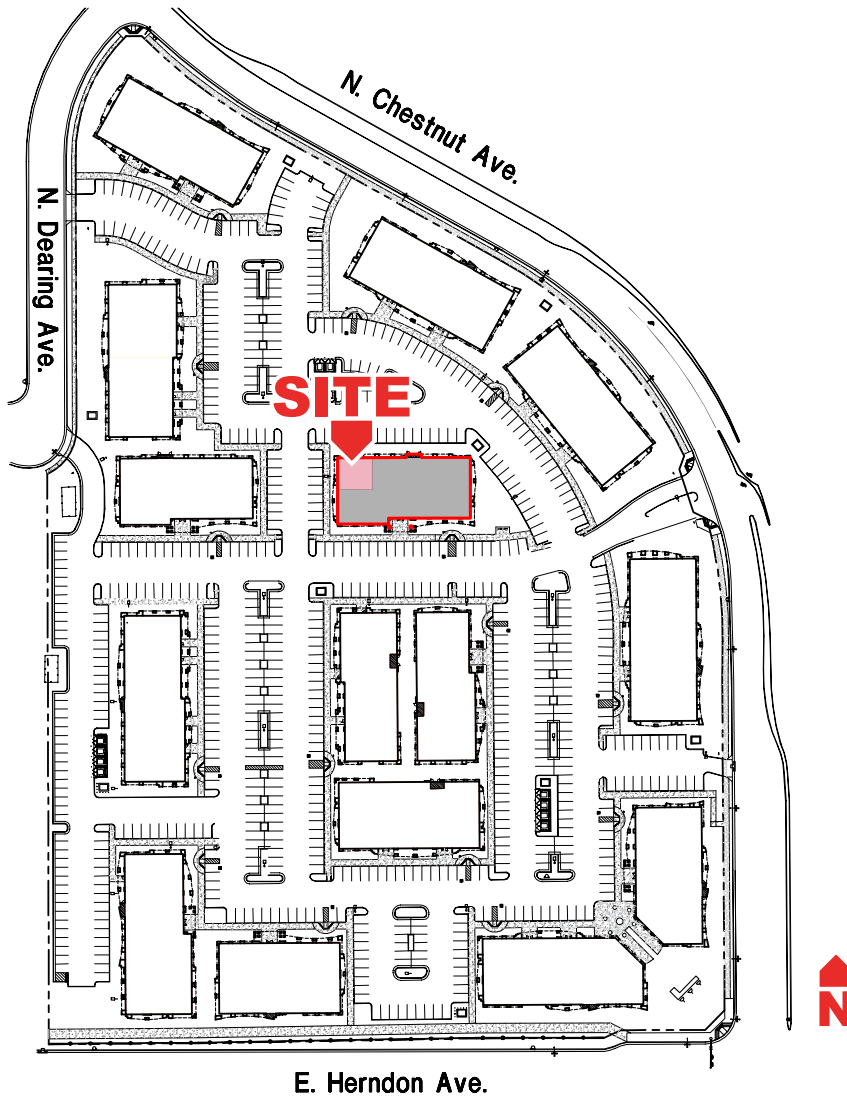
FRESNO OFFICE  
7480 N Palm Ave #101  
Fresno CA 93711  
559.432.6200

VISALIA OFFICE  
3447 S Demaree St  
Visalia CA 93277  
559.732.7300

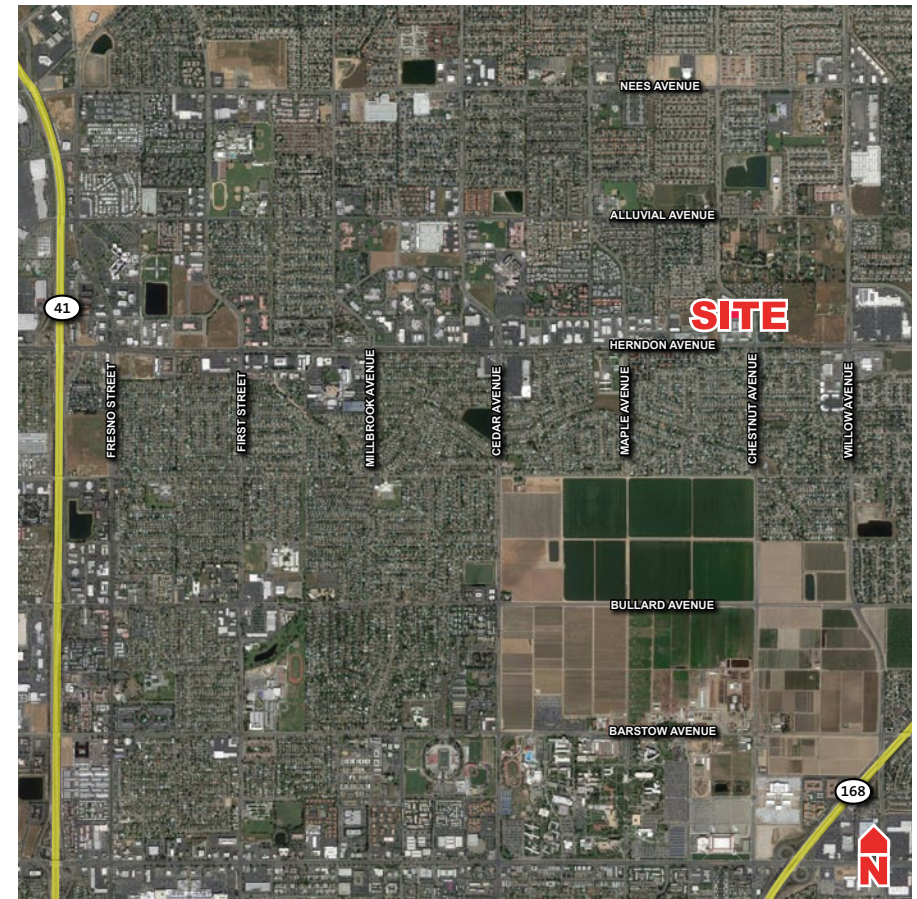
Procuring broker shall only be entitled to a commission, calculated in accordance with the rates approved by our principal only if such procuring broker executes a brokerage agreement acceptable to us and our principal and the conditions as set forth in the brokerage agreement are fully and unconditionally satisfied. Although all information furnished regarding property for sale, rental, or financing is from sources deemed reliable, such information has not been verified and no express representation is made nor is any to be implied as to the accuracy thereof and it is submitted subject to errors, omissions, change of price, rental or other conditions, prior sale, lease or financing, or withdrawal without notice and to any special conditions imposed by our principal.

# 7095 N. CHESTNUT AVENUE - FRESNO, CA AVAILABLE FOR LEASE

## FLOOR PLAN



## AERIAL MAP



Independently Owned and Operated  
[www.newmarkpearson.com](http://www.newmarkpearson.com)

FRESNO OFFICE  
7480 N Palm Ave #101  
Fresno CA 93711  
559.432.6200

VISALIA OFFICE  
3447 S Demaree St  
Visalia CA 93277  
559.732.7300

Procuring broker shall only be entitled to a commission, calculated in accordance with the rates approved by our principal only if such procuring broker executes a brokerage agreement acceptable to us and our principal and the conditions as set forth in the brokerage agreement are fully and unconditionally satisfied. Although all information furnished regarding property for sale, rental, or financing is from sources deemed reliable, such information has not been verified and no express representation is made nor is any to be implied as to the accuracy thereof and it is submitted subject to errors, omissions, change of price, rental or other conditions, prior sale, lease or financing, or withdrawal without notice and to any special conditions imposed by our principal.