

**5910  
GATEWAY  
DRIVE,  
STE A & B**  
ALPHARETTA,  
GA 30004

**Industrial Property For Lease**

**NEAL SHIVER, CCIM**

*Vice President*

404.942.2046

nshiver@kingindustrial.com

**King** *Industrial  
Realty, Inc.*

Industrial • Commercial • Investment

404.942.2000 | [kingindustrial.com](http://kingindustrial.com)

# PROPERTY SUMMARY



## PROPERTY HIGHLIGHTS

- Suite A: 7,225+/- SF w/ 1,696+/- SF Office Space, 1 Dock Door
- Suite B: 3,612+/- SF w/745+/- SF Office Space, 1 Dock Door
- 90' Truck Court
- 3-Phase Power
- 17' Clear Height
- Brick & Block construction

## OFFERING SUMMARY

Available SF	3,612 - 10,837 SF
Lot Size	1.22 Acres
Building SF	14,450 SF
Zoning	M1C



### NEAL SHIVER, CCIM

Vice President

404.942.2046

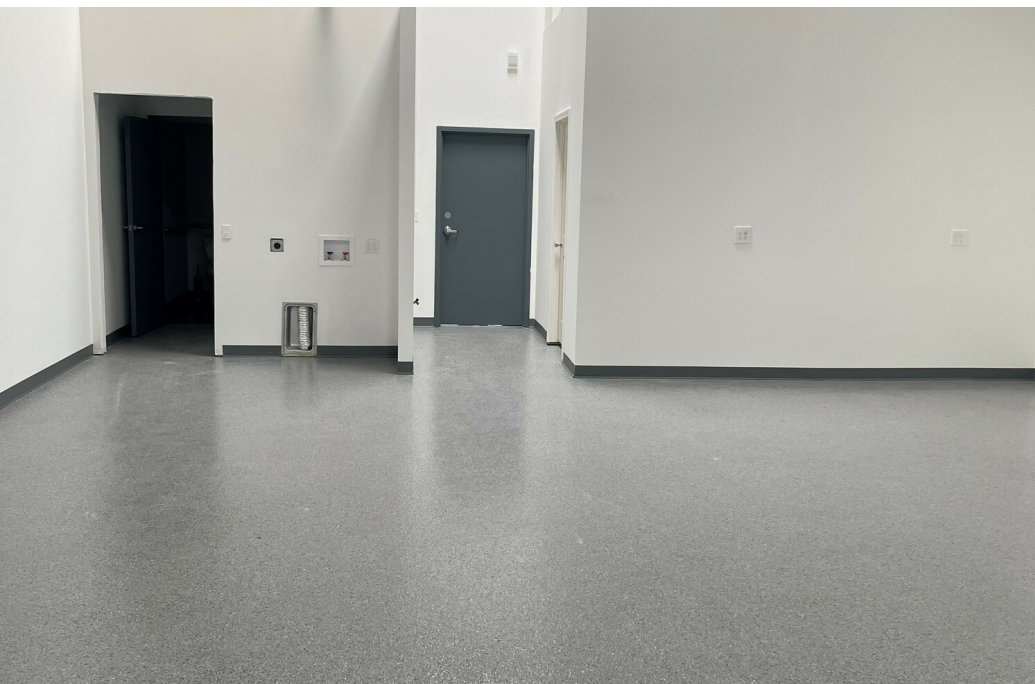
nshiver@kingindustrial.com

Every effort has been made to provide accurate information, but no liability is assumed for errors or omissions.

**King** Industrial Realty, Inc.

Industrial • Commercial • Investment  
404.942.2000 | kingindustrial.com

# SUITE B



## NEAL SHIVER, CCIM

Vice President

404.942.2046

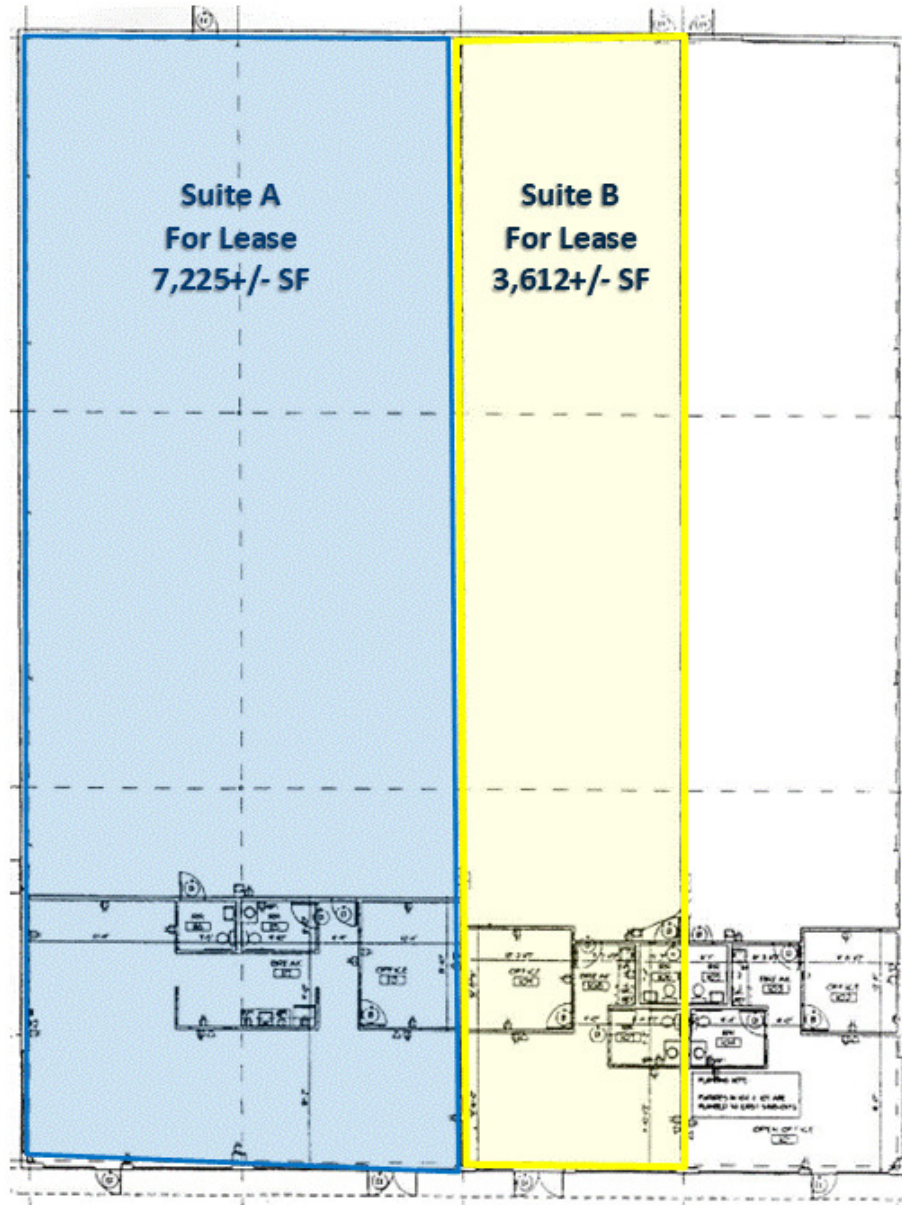
nshiver@kingindustrial.com

*Every effort has been made to provide accurate information, but no liability is assumed for errors or omissions.*

**King** Industrial  
Realty, Inc.

404.942.2000 | [kingindustrial.com](http://kingindustrial.com)  
Industrial • Commercial • Investment

# FLOOR PLAN



**NEAL SHIVER, CCIM**

Vice President

404.942.2046

nshiver@kingindustrial.com

Every effort has been made to provide accurate information, but no liability is assumed for errors or omissions.

**King** Industrial  
Realty, Inc.

Industrial • Commercial • Investment  
404.942.2000 | kingindustrial.com

# LOCATION MAP



Google

Map data ©2023 Imagery ©2023 Maxar Technologies, U.S. Geological Survey, USDA/FPAC/GEO

**NEAL SHIVER, CCIM**

Vice President

404.942.2046

nshiver@kingindustrial.com

*Every effort has been made to provide accurate information, but no liability is assumed for errors or omissions.*

**King** Industrial  
Realty, Inc.

Industrial • Commercial • Investment  
404.942.2000 | kingindustrial.com

EXCLUSIVELY LISTED BY:

**NEAL SHIVER, CCIM**

*Vice President*

[nshiver@kingindustrial.com](mailto:nshiver@kingindustrial.com)

404.942.2046

***King*** Industrial  
Realty, Inc.

Industrial • Commercial • Investment  
404.942.2000 | [kingindustrial.com](http://kingindustrial.com)