

First Generation Industrial Space

Approximately 50,000 Square Feet

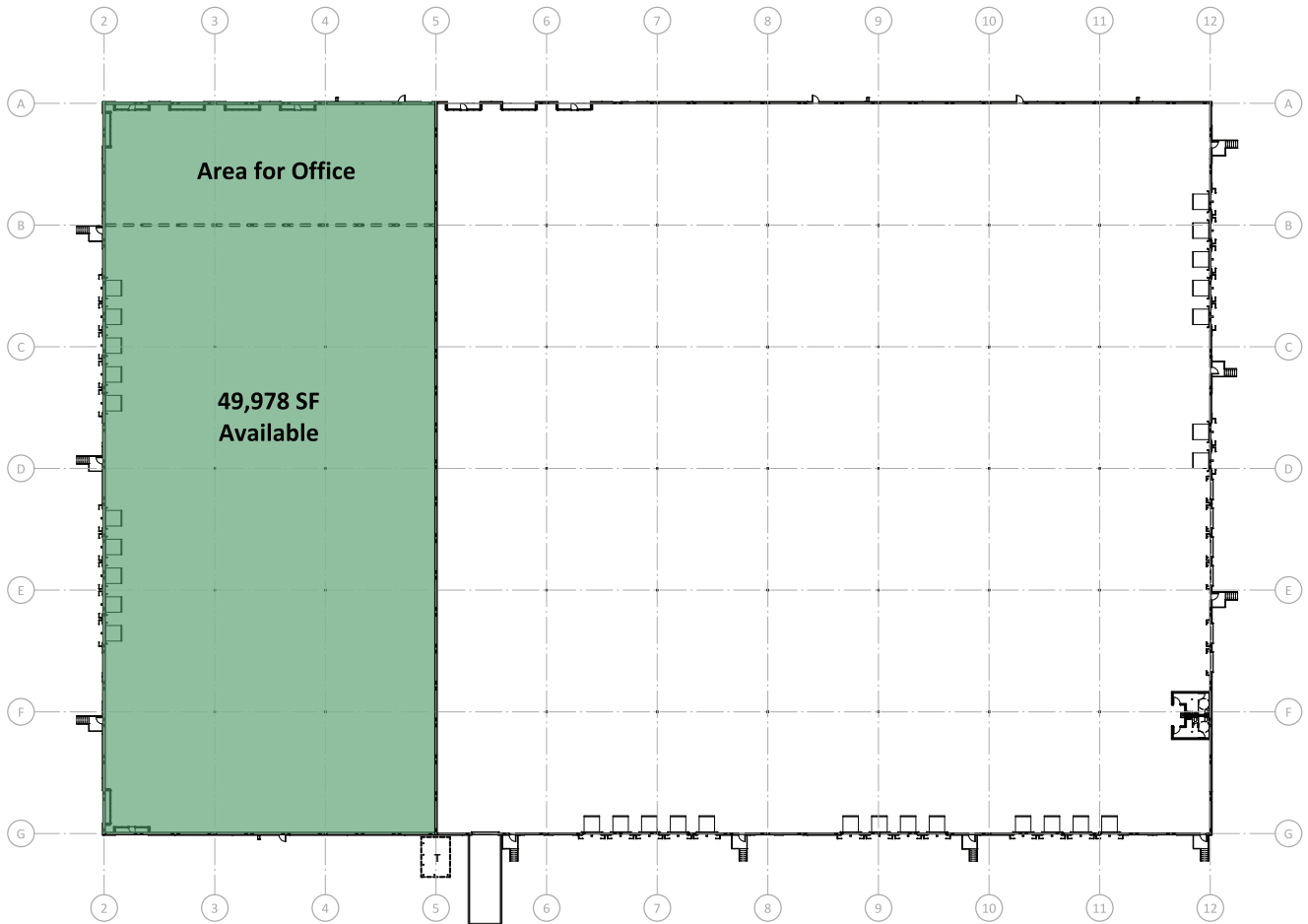
9784 Plaza Circle
El Paso, Texas 79927
www.cbre.com/elpaso

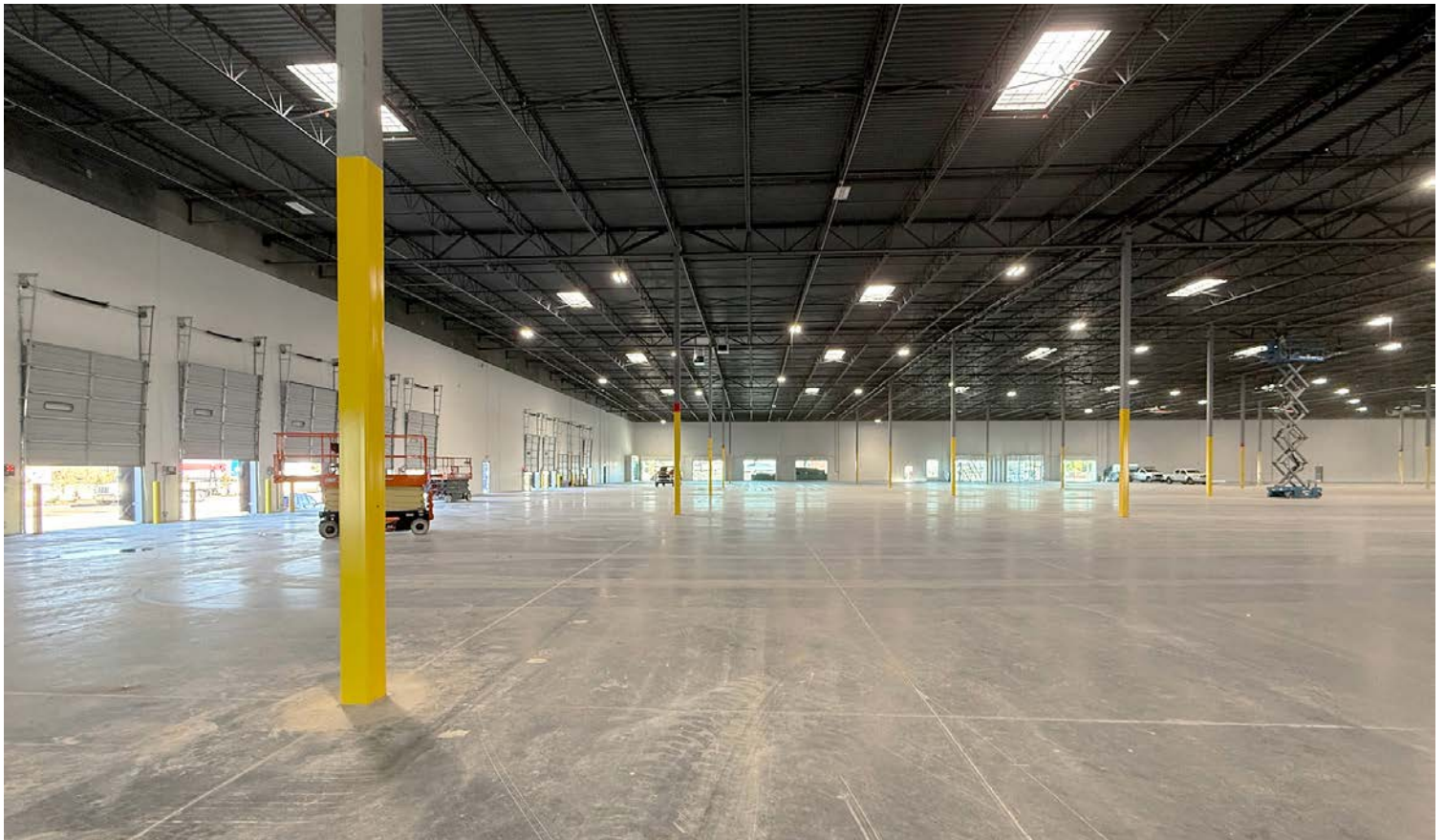


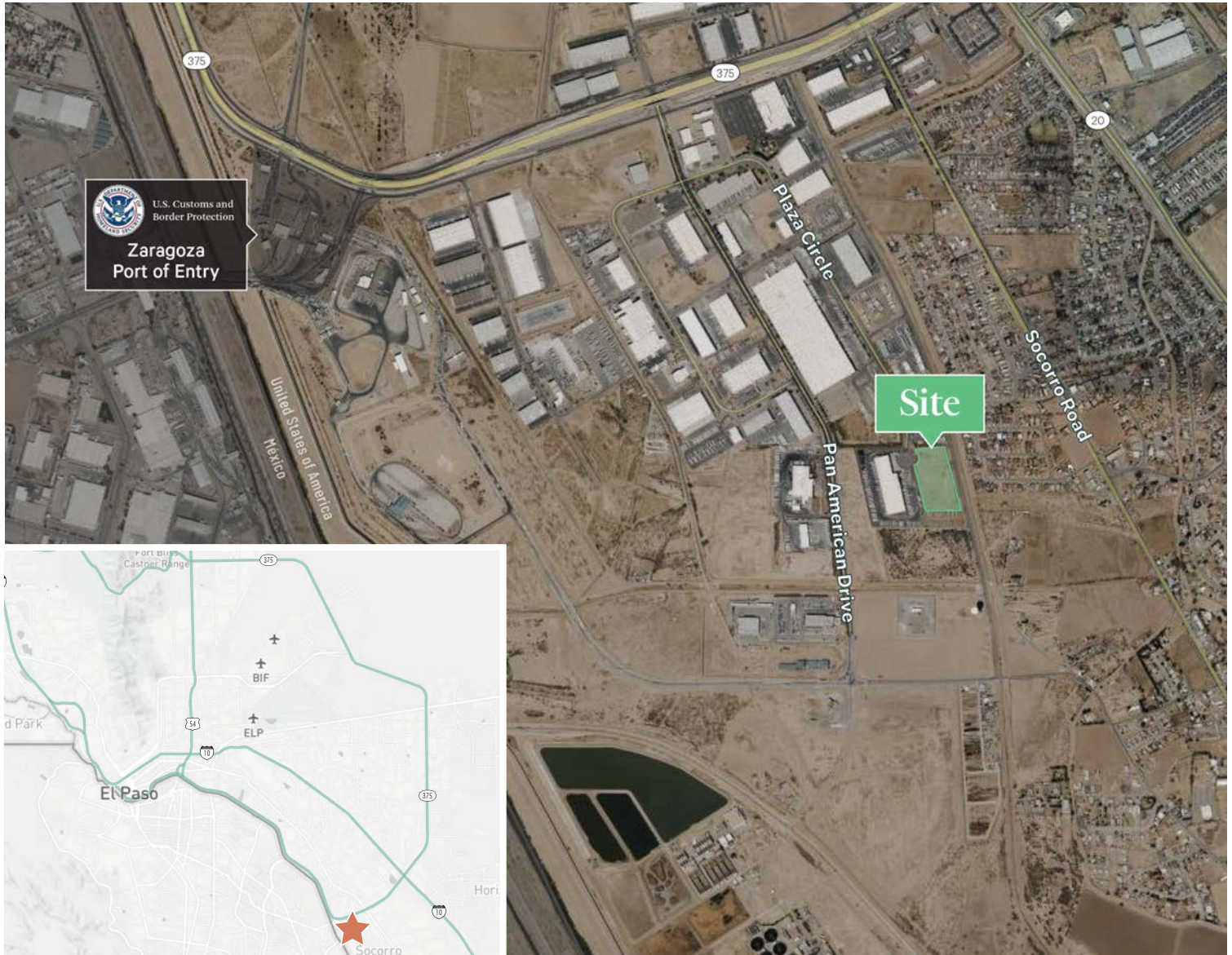
Property Overview

This new Class A warehouse is scheduled to be completed in Q4 2024 for beneficial occupancy. The site offers the ability to support operations with a fenced and secured truck court for the exclusive use of the Tenant. The site has a desirable proximity to the Ysleta Port of Entry which makes this an ideal opportunity for any warehouse / distribution user

- | | | | |
|--------------------|----------------|-------------------|--|
| + Delivery Date: | Q4 2024 | + Column Spacing: | 50' x 55' |
| + Available Space: | 49,978 sq. ft. | + Clear Height: | 28' |
| + Office Area: | Build-to-suit | + Dock Doors: | 10 dock high
<i>with pit levelers</i> |







Contact Us

Arturo De la Mora, MBA
Senior Vice President
+1 915 313 8811
arturo.delamora@cbre.com

© 2025 CBRE, Inc. All rights reserved. This information has been obtained from sources believed reliable, but has not been verified for accuracy or completeness. You should conduct a careful, independent investigation of the property and verify all information. Any reliance on this information is solely at your own risk. CBRE and the CBRE logo are service marks of CBRE, Inc. All other marks displayed on this document are the property of their respective owners, and the use of such logos does not imply any affiliation with or endorsement of CBRE. Photos herein are the property of their respective owners. Use of these images without the express written consent of the owner is prohibited.

