



Sandy Retail

**10701 S. STATE ST.
SANDY, UT 84070**

For Lease

- 3,090 SF available
- High-end surrounding retail mix
- Ample parking
- Strong demographics
- High traffic counts

Population

	1 mile	3 miles	5 miles
2021 Estimated Population	12,339	108,160	299,340
2026 Projected Population	13,392	117,036	324,084
2021 Est. Daytime Population	17,345	125,821	302,594

Households

2021 Estimated Households	4,352	35,627	95,610
2026 Projected Households	4,705	38,534	103,648

Income

2021 Est. Average HH Income	\$99,839	\$111,041	\$116,152
2021 Est. Median HH Income	\$88,234	\$96,097	\$96,640
2021 Est. Per Capita Income	\$34,388	\$36,614	\$37,346

Source: Esri Business Analyst

For information, please contact:

Tony Coop

Director

t 801-578-5528

tony.coop@nmrk.com

Jason Hone

Associate

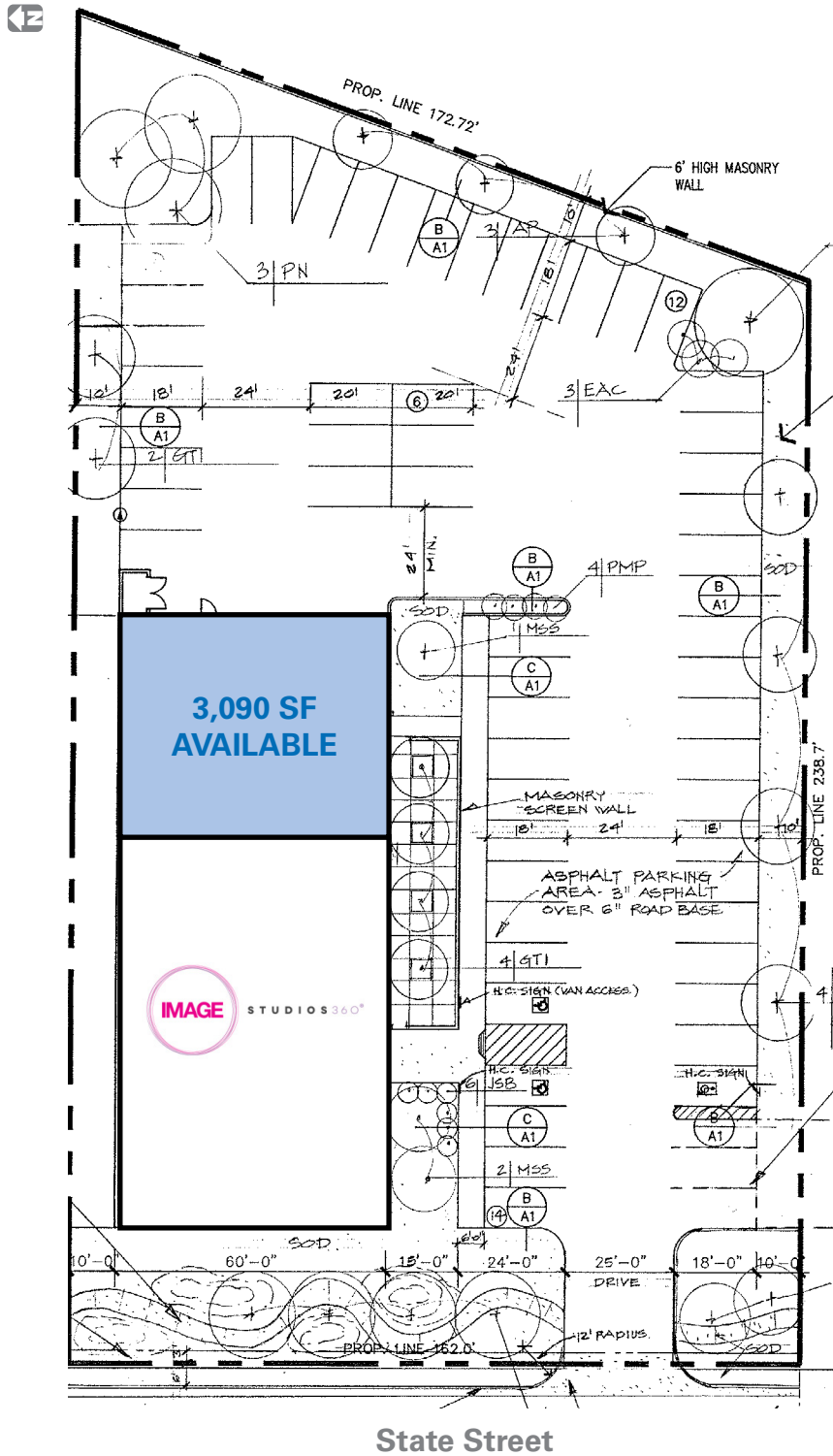
t 801-578-5586

jason.hone@nmrk.com

nmrk.com

NEWMARK

The information contained herein has been obtained from sources deemed reliable but has not been verified and no guarantee, warranty or representation, either express or implied, is made with respect to such information. Terms of sale or lease and availability are subject to change or withdrawal without notice.



State Street

For information, please contact:

Tony Coop

Director

t 801-578-5528

tony.coop@nmrk.com

Jason Hone

Associate

t 801-578-5586

jason.hone@nmrk.com

nmrk.com

NEWMARK

The information contained herein has been obtained from sources deemed reliable but has not been verified and no guarantee, warranty or representation, either express or implied, is made with respect to such information. Terms of sale or lease and availability are subject to change or withdrawal without notice.



For information, please contact:

Tony Coop

Director

t 801-578-5528

tony.coop@nmrk.com

Jason Hone

Associate

t 801-578-5586

jason.hone@nmrk.com

nmrk.com