

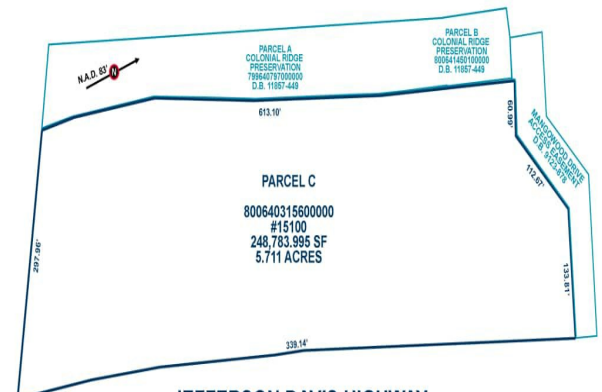
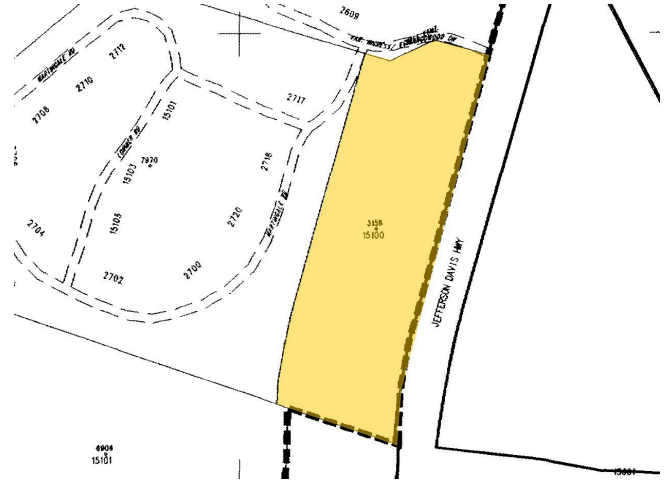


15100 Jefferson Davis Hwy

\$2,500,000

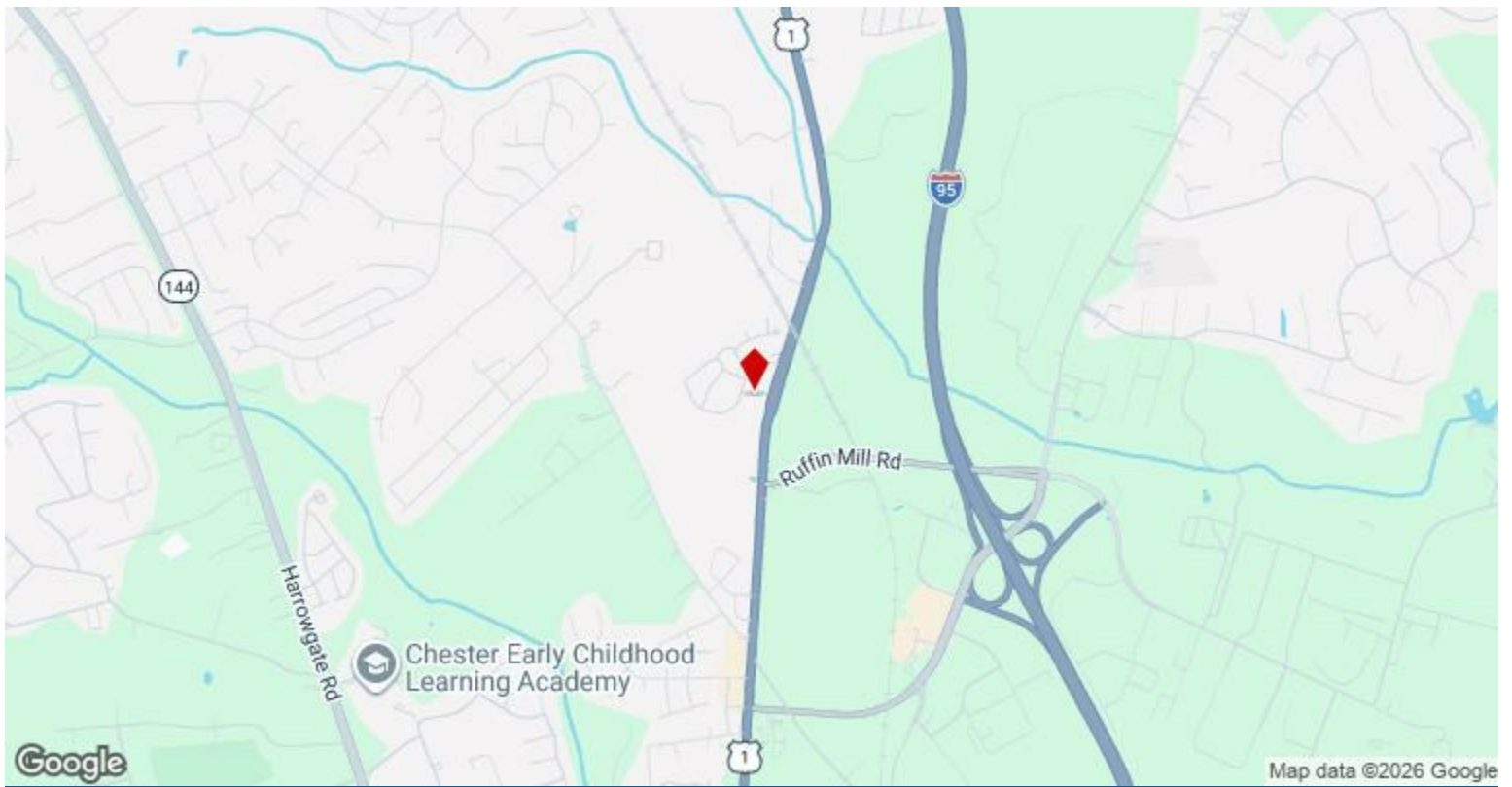
Prime Commercial Opportunity – Exceptional Visibility on U.S. Route 1! Rare opportunity to own a strategically located property with outstanding frontage of 896 sqft along heavily traveled Jefferson Davis Highway (U.S. Route 1). Positioned in the heart of a rapidly growing corridor connecting Colonial Heights, Chesterfield, and Petersburg, this site offers unmatched exposure to high daily traffic counts and strong consumer visibility. Surrounded by established residential communities, expanding commercial businesses, and active industrial developments, this location is perfectly suited for a wide range of potential uses. Ideal for retail, office, mixed-use development, automotive businesses, restaurants, service industries, investment opportunities, and potential residential development or apartment buildings (subject to zoning approvals). The property benefits from excellent accessibility, strong commuter traffic, and a thriving local workforce population, creating...

- Exceptional Visibility on U.S. Route 1
- Outstanding frontage of 896 sqft
- C3 zoning which fits for any purposes



**JEFFERSON DAVIS HIGHWAY
U.S. ROUTES 1 / 301**

Price:	\$2,500,000
Property Type:	Land
Property Subtype:	Commercial
Proposed Use:	Commercial
Sale Type:	Investment
Total Lot Size:	5.71 AC
No. Lots:	1
Zoning Description:	C-3
APN / Parcel ID:	800-64-03-15-600-000



15100 Jefferson Davis Hwy, Chesterfield, VA 23834