

Middleton Road Parcel

Middleton Road Parcel Middleton Road Aberdeen, Harford County, Maryland

Parcel Size: ± 14.5 Acres;
divisible for pad sites

Location: Middleton Road

Zoning: B-3, City of Aberdeen

Utilities: All public utilities

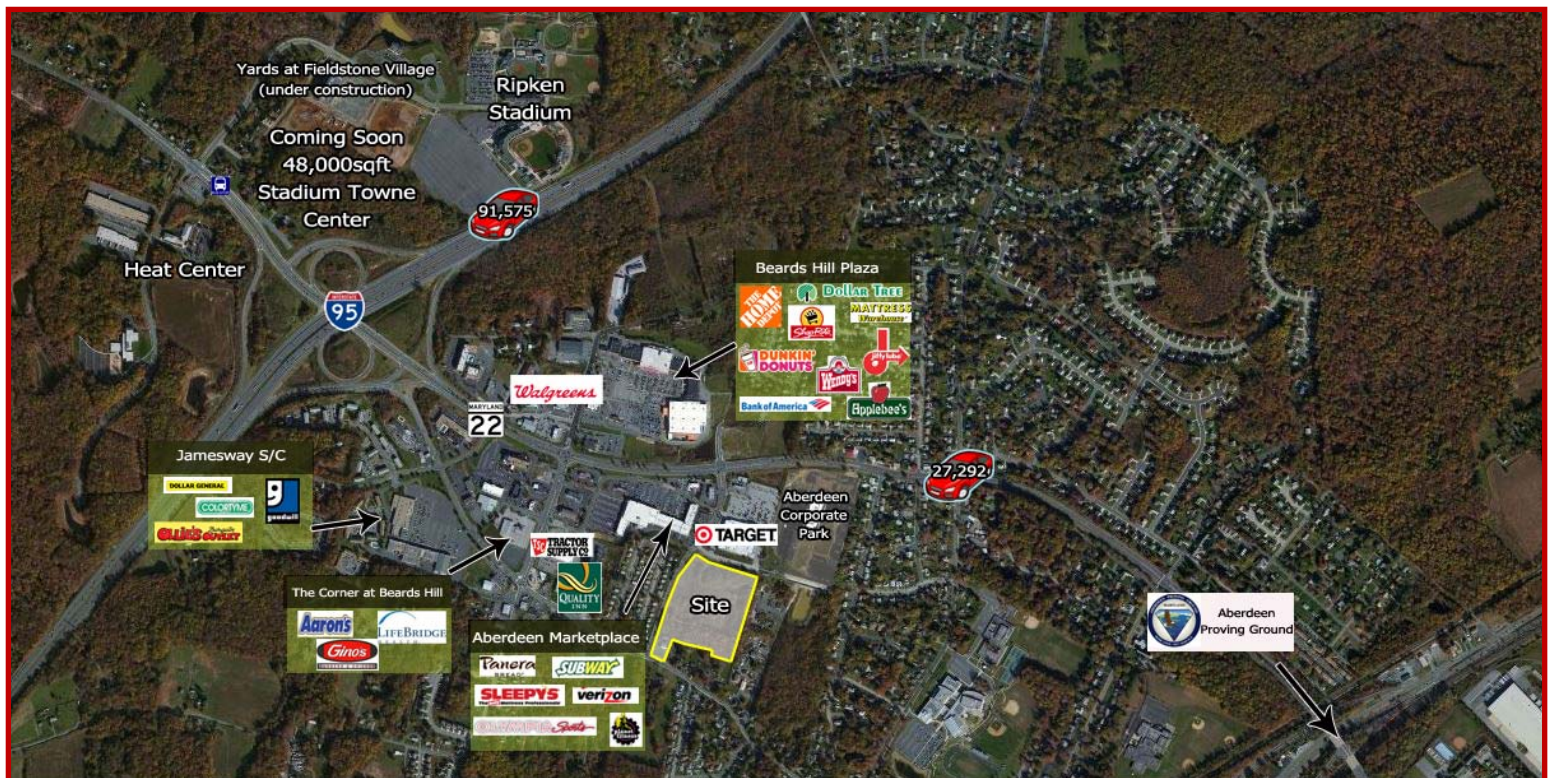
Improvements: None

Ground Rent: Negotiable



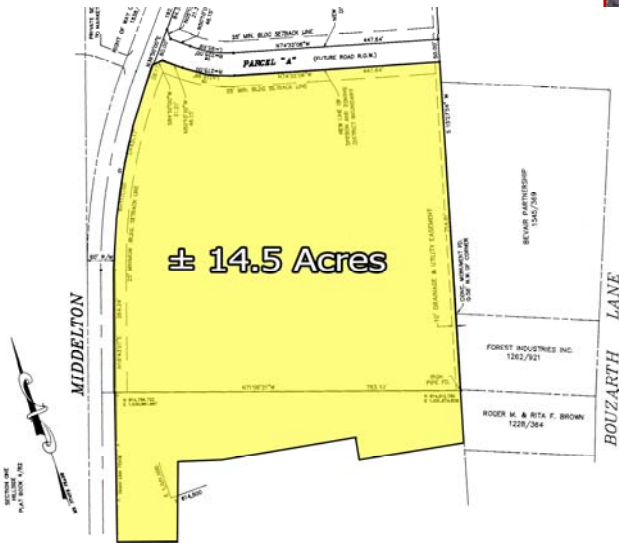
2016 Demographics

	1 Mile	3 Mile	5 Mile
Population	6,142	23,780	47,170
Avg. HH Income	\$60,857	\$68,849	\$79,306



Middleton Road Parcel

Middleton Road Parcel
Middleton Road
Aberdeen, Harford County, Maryland



Aberdeen is located in Harford County, just 30 miles northeast of Baltimore. Aberdeen is convenient to big city amenities: Ripken Stadium, arts and cultural institutions, shopping and dining, and major transportation hubs.

Aberdeen is the home of the U.S. Army's Aberdeen Proving Ground (APG). It also is the home of leading businesses, including Frito-Lay, Clorox, Saks Fifth Avenue, Rite Aid, Pier 1 Imports, which value Aberdeen's proximity to U.S. Route 40, interstate 95, Amtrak and Chessie rail lines.