



# 1438 E. Michigan Ave

Lansing, Michigan 48910

## Property Highlights

- Building can be split into two 2700 sqft suites
- Drive-Thru possible on the east end of the building
- 20 parking spaces on site
- Owner willing to offer generous Tenant Improvement allowance
- Located half way between the State Capital and US -127
- Nice free standing building on the Michigan Ave corridor
- Parcel Number 33-01-01-15-402-003
- Property Tax \$15,950

## Offering Summary

Sale Price:	\$549,000
Lease Rate:	\$9.75 SF/yr (NNN)
Building Size:	5,828 SF

Demographics	1 Mile	3 Miles	5 Miles
Total Households	6,025	39,376	79,250
Total Population	14,597	101,251	207,872
Average HH Income	\$43,149	\$47,245	\$48,399

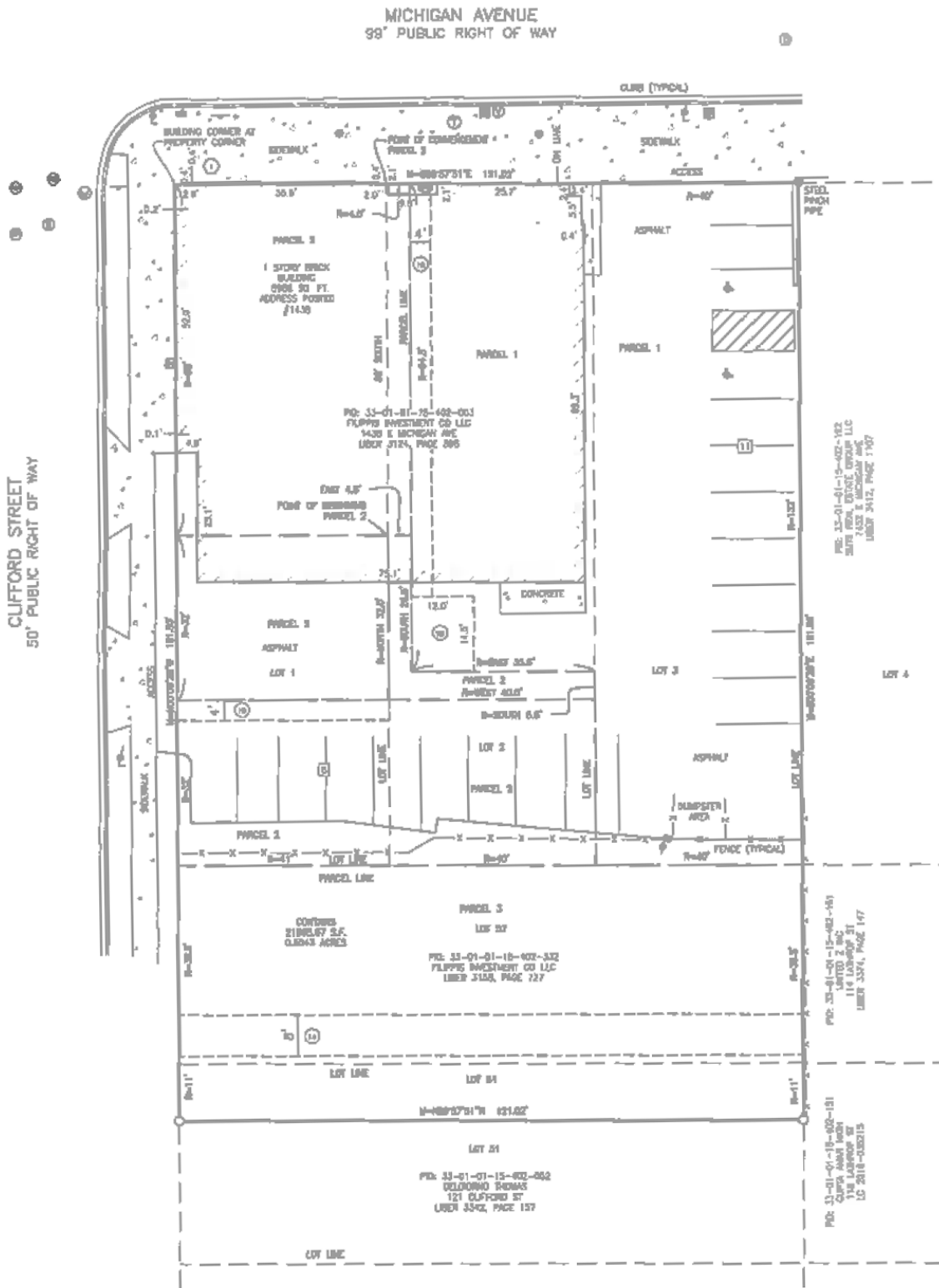
## For More Information

### Steve Slater

Associate Broker  
 O: 517 487 9222 | C: 517 749 7914  
 steveslater@naimidmichigan.com

### Jim Vlahakis

Principal  
 O: 517 487 9222 | C: 517 881 9916  
 jvlahakis@naimidmichigan.com



NO WARRANTY OR REPRESENTATION, EXPRESS OR IMPLIED, IS MADE AS TO THE ACCURACY OF THE INFORMATION CONTAINED HEREIN, AND THE SAME IS SUBMITTED SUBJECT TO ERRORS, OMISSIONS, CHANGE OF PRICE, RENTAL OR OTHER CONDITIONS, PRIOR SALE, LEASE OR FINANCING, OR WITHDRAWAL WITHOUT NOTICE, AND OF ANY SPECIAL LISTING CONDITIONS IMPOSED BY OUR PRINCIPALS NO WARRANTIES OR REPRESENTATIONS ARE MADE AS TO THE CONDITION OF THE PROPERTY OR ANY HAZARDS CONTAINED THEREIN ARE INTENDED TO BE IMPLIED

2149 Jolly Road, Suite 200  
Okemos, MI 48864  
517 487 9222 tel  
naimidmichigan.com