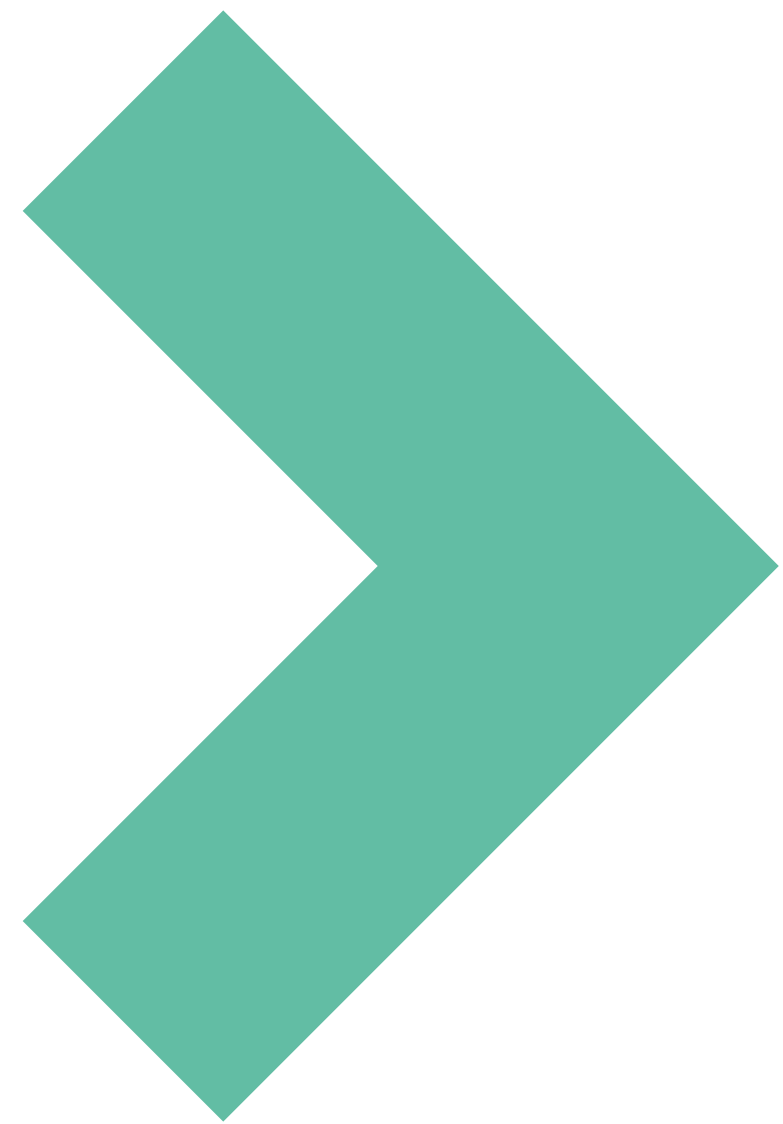


Earley East

79,000 sq ft of
contemporary
office space







Re-energising
a modern day
workplace

Main entrance



Earley East offers a newly refurbished office space set in the idyllic Thames Valley Park, featuring top class amenities including a mezzanine lounge area, state-of-the-art shower block and a café with outdoor seating



Mezzanine lounge

Earley East: Designed for connectivity

Whether you're leading, learning or just visiting, there's a fresh energy to the newly revitalised Earley East. In the double-height lobby there's an elegant choice of banquettes, sofas, meeting booths and a tea/coffee point, in which to meet, greet or just draw breath.

The design is sleek, modern and tactile, with oak floors, polished brass, exposed concrete soffits and ceramic and timber walls. The mix of finishes complements the raw beauty of the natural outdoors, which is framed at every angle.



Staircase to mezzanine lounge

Office Space

At Earley East design details such as flexible working zones, generous floor plates and glazed vistas onto the natural landscape give a seamless connection with the park's great outdoors.



> > 79,000 sq ft with generous,
> > flexible floor plates



Main entrance outdoor lounge area

01
02
03
04
05
06
07
08
09
10
11
12
13
14
15
16
17
18
19
20
21
22
23
24
25
26
27
28
29
30
31
32
33
34
35
36
37
38
39
40
41
42
43
44
45
46
47
48
49
50
51
52
53
54
55
56
57
58
59
60
61
62
63
64
65
66
67
68
69
70
71
72
73
74
75
76
77
78
79
80
81
82
83
84
85
86
87
88
89
90
91
92
93
94
95
96
97
98
99
100



earley
east

Take a break

Earley East's very own café stands in a tranquil, leafy setting by the lake, with outdoor seating for enjoying your espresso in summertime. Open during working hours, it's also the perfect venue for a relaxed client meeting or a little light networking.



Every detail counts

Inspirational design for aspirational companies is about more than glossy surfaces – it delivers the everyday detail you can depend on when there's a tough presentation ahead.

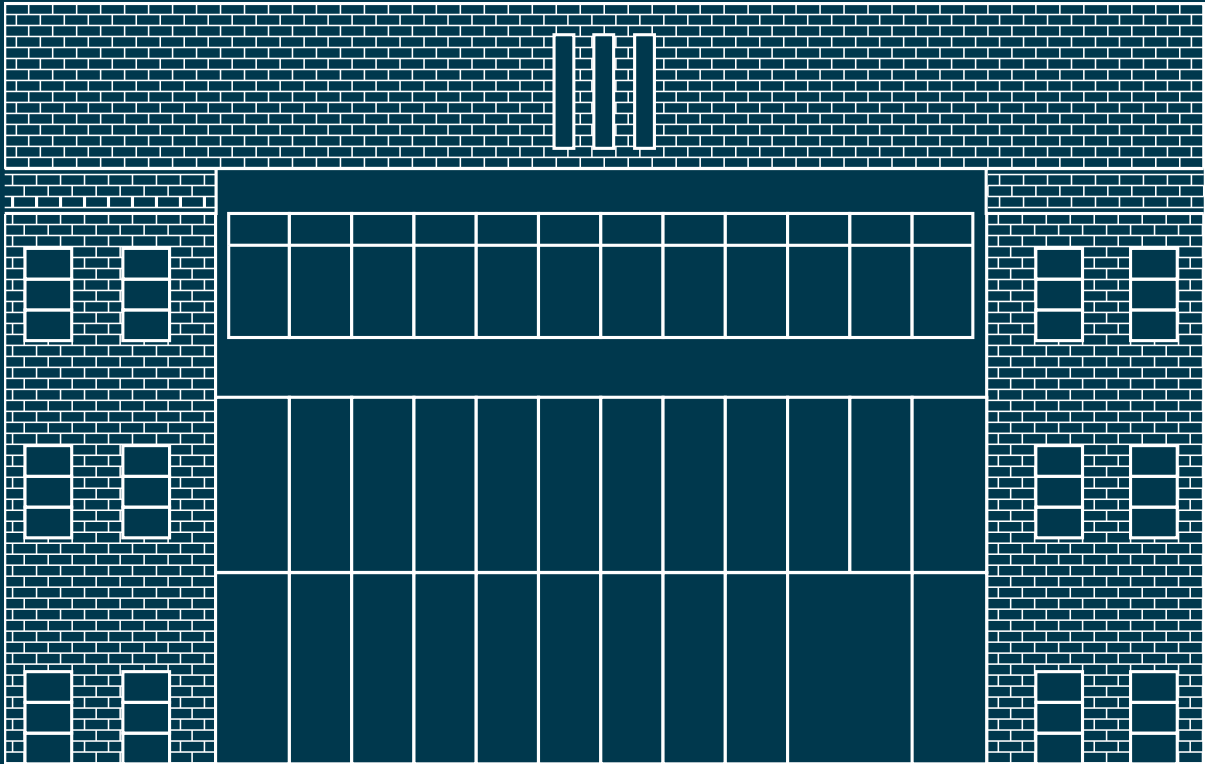
In addition to covered cycle storage, car charging points and a boutique shower block with drying room, there's the brilliant Earley Buildings engagement app connecting you to the community, including updates on events and fitness classes, building information and on demand services and experiences.



Lobby breakout space

Schedule of Areas

Earley East offers 79,000 sq ft of re-energised office space set over 3 floors with picturesque views across the landscaped lakes and 80-acre nature reserve.



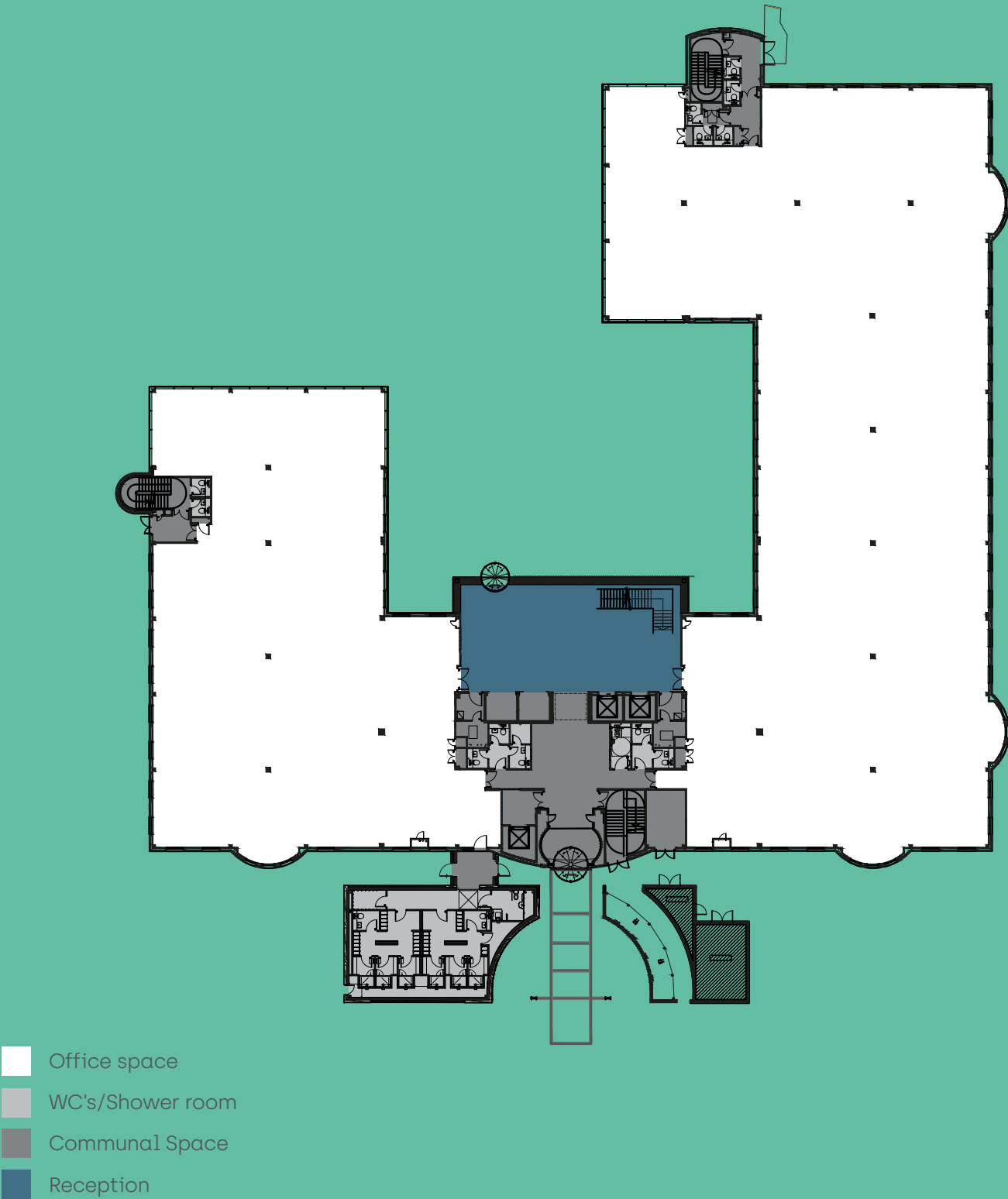
Floor	SQ FT	SQ M
Second Floor	26,662	2,477
First Floor	25,629	2,381
Ground Floor	24,617	2,287
Reception	1,916	178
Total	78,824	7,323

Proposed areas in International Property Measurement Standards (IPMS3)

Ground Floor



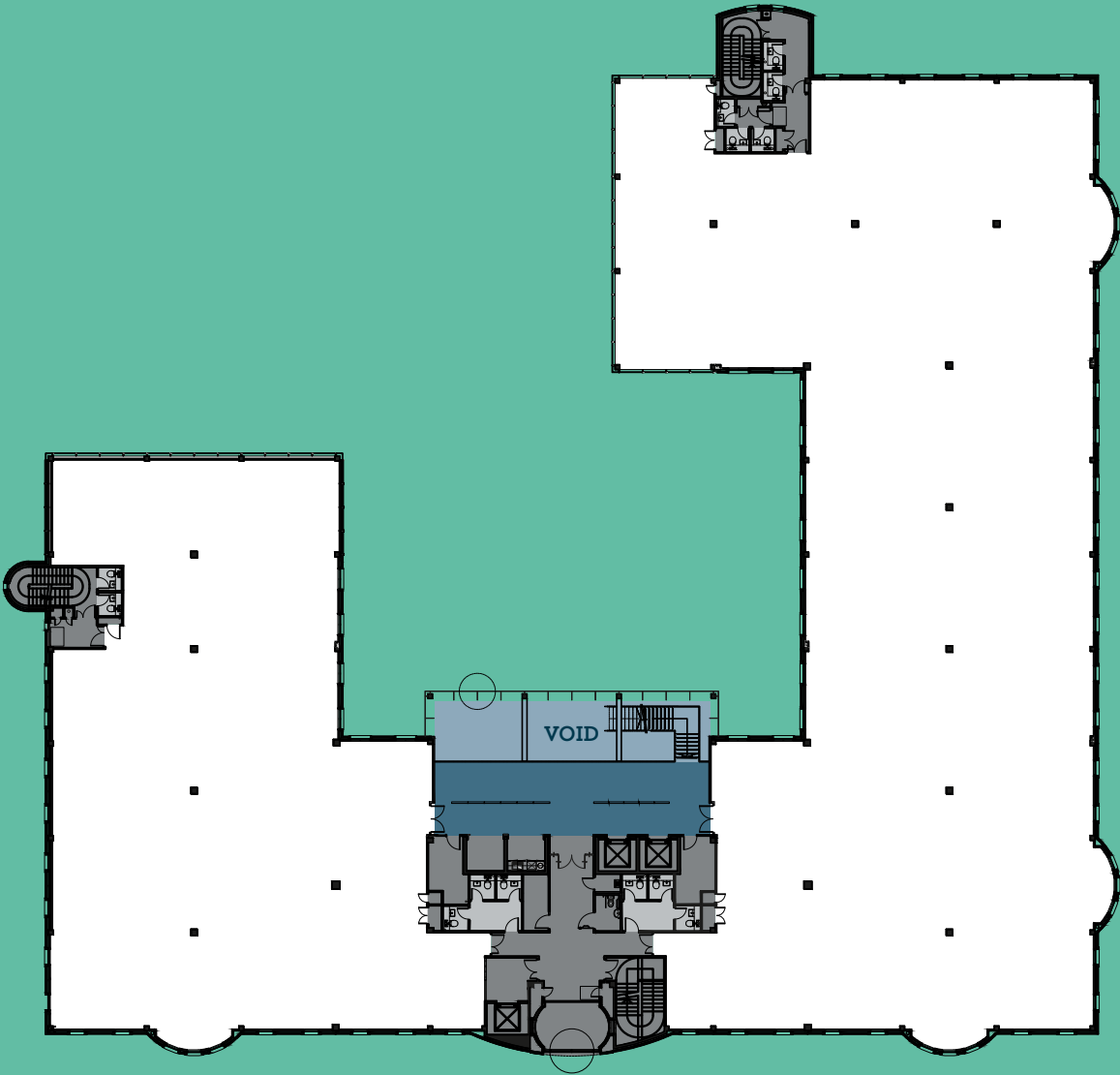
24,617 SQ FT
2,287 SQ M



First Floor

N

25,629 SQ FT
2,381 SQ M

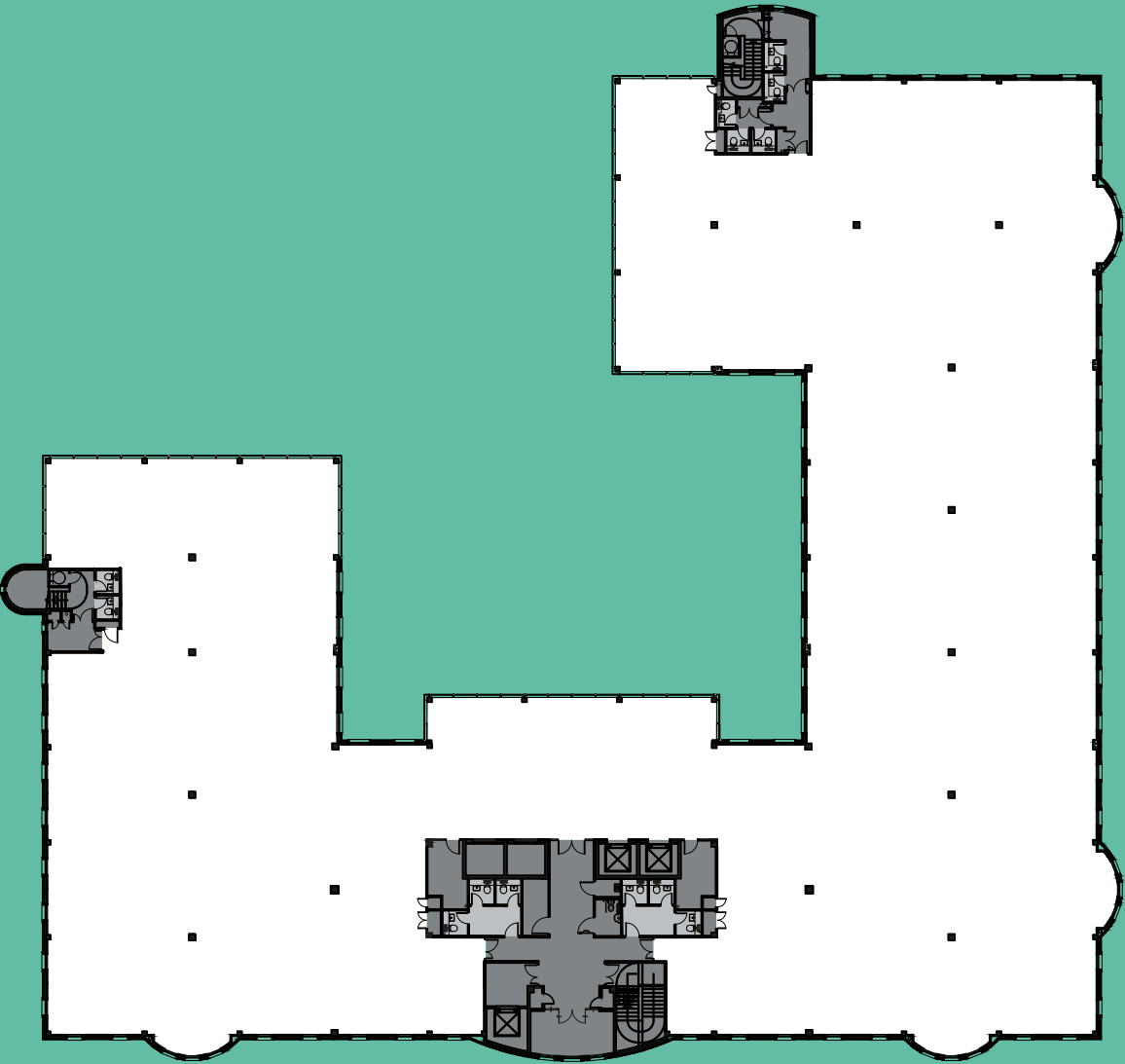


- Office space
- WC's/Shower room
- Communal Space
- Mezzanine

Second Floor

N

26,662 SQ FT
2,477 SQ M



- Office space
- WC's/Shower room
- Communal Space



Mezzanine lounge



Thames Valley Park: The beauty of doing business

Thames Valley Park is a cutting-edge, high-tech business park in a beautiful natural setting that was developed in the 1990s on the site of the former Earley Power Station. When giants like Microsoft and Oracle moved in, the site transformed into a different kind of power generator, connecting global success with an authentic rural locality.

The park's strong community connections, both urban and rural, are fostered by exceptional schools, a world-class university, and excellent restaurants, cafés, retail attractions and gyms.



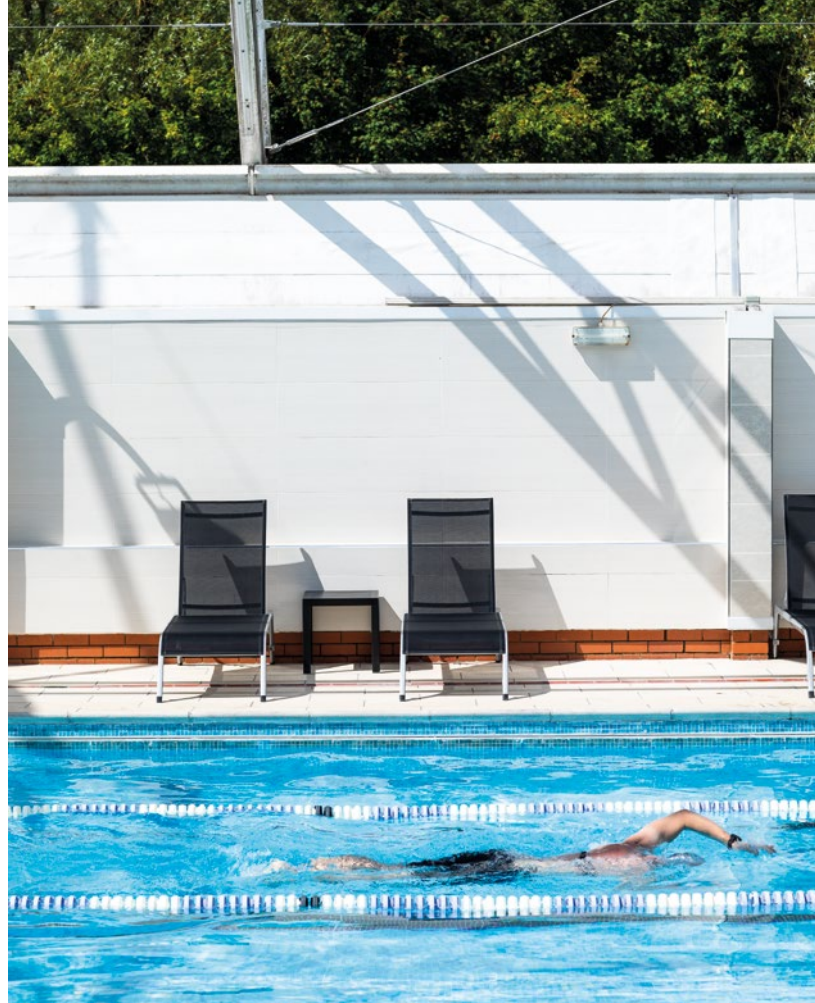
The park's own Thames frontage is a long-cherished local beauty spot, mythologised in the classic 1889 English novel *Three Men in a Boat* and now host to the annual Reading Town and Park Regattas.

The stunning 80-acre nature reserve holds Saturday Parkruns and a popular Summer Festival; its biodiversity is protected by Reading's 2050 Vision, promoting sustainability.

× × × × × ×
× × × × × ×

Our neighbours include:
Microsoft, Oracle, Regus,
Open Text, Hewlett
Packard and Sanofi





Life in the park

The culture of community in Thames Valley Park is a world away from the business park stereotype. A sense of shared neighbourhood radiates from the lively queues for Thames Valley Park's weekly #TVFoodFest, and amenities like Benugo Café and the David Lloyd gym, pool and café. At lunchtime it's a peaceful setting for a tasty sandwich, an invigorating run or contemplative wildlife stroll.

Waterside nursery and preschool supports and connects the park's working parents and for speedy homeward grocery shopping there's a healthy choice of nearby supermarkets, including Waitrose, a brand-new Aldi and drive-through Costa.



Well connected to Reading and London

Meetings in the capital? You can get from your desk to central London in an hour, thanks to frequent shuttle buses from Earley East to the railway station, just 12 minutes' away. From there it's only 25 minutes by train to London Paddington, and less than an hour's direct service to London Liverpool St or Bond St Underground via the new Elizabeth line.

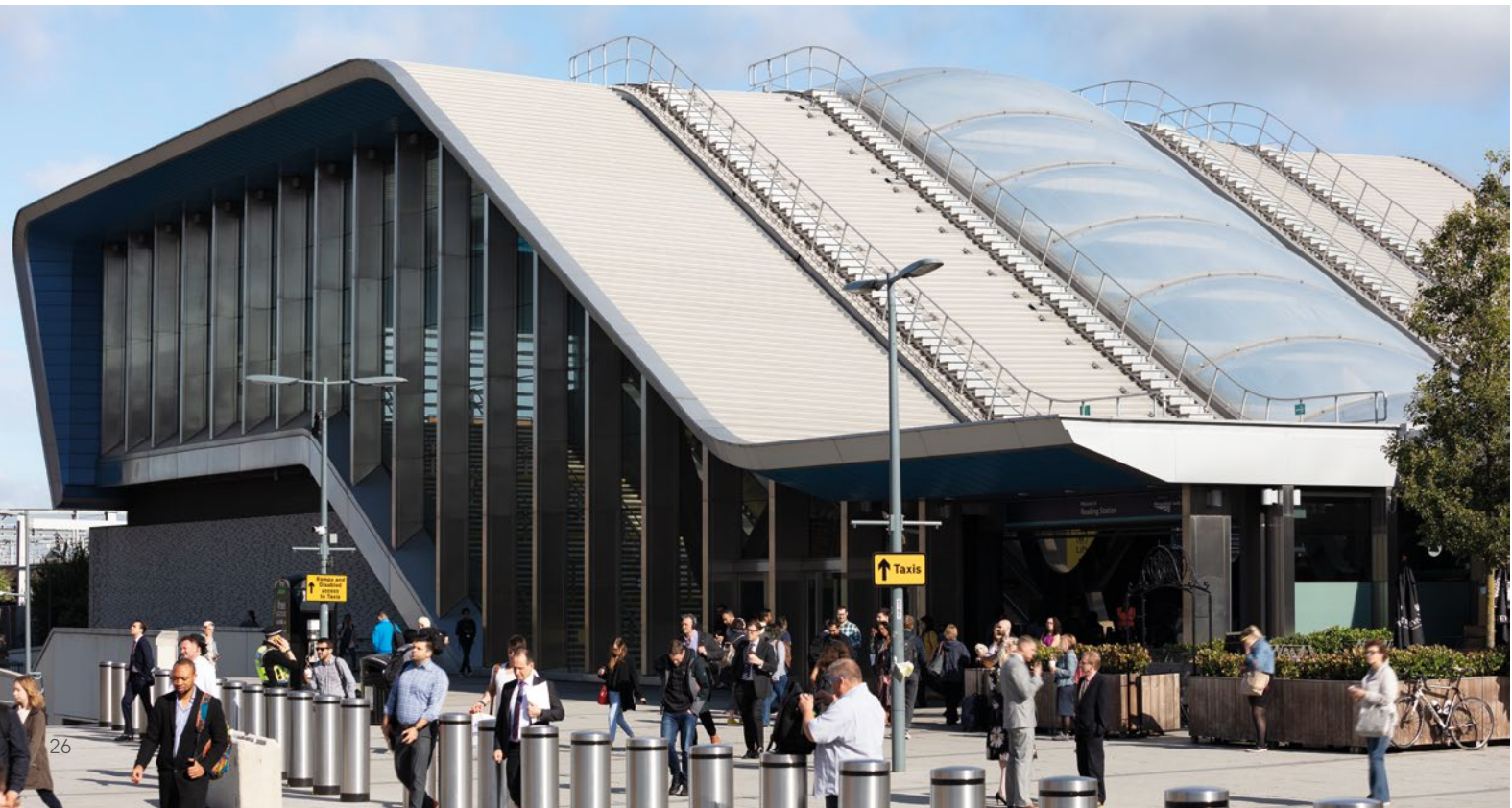
The station is 15 minutes' ride by bike – or you can walk there, along the scenic Thames Path, in about 40 minutes. By car it's just 5 miles from Earley East to Junction 10 of the M4, plus there's an on-site bike loan and car share scheme.

From Reading Train Station

- **Slough** 13 mins
- **Oxford** 24 mins
- **London Paddington** 25 mins
- **Gatwick Airport** 60 mins
- **Heathrow Airport** 60 mins
- **Birmingham** 97 mins

Driving from Thames Valley Park

- **M4 - J10** 5 mins
- **M4 - J11** 16 mins
- **M4 - J12** 18 mins
- **Heathrow Airport** 40 mins
- **London** 54 mins
- **Gatwick Airport** 75 mins



Take the free 12-minute shuttle ride from park to station



Cycle to the station in 15 minutes using Easit



Direct service to London Liverpool Street and Bond Street in under an hour via the new Elizabeth line



Reading: The UK's fastest growing city

There's a reason why Reading tops current UK business league tables and attracts global influencers and investors to its tech and creative hub – and it's not just the new £900m train station, high-speed London rail connections, scenic town and world-class graduates.

For those who value their health and home lives as much as their high-flying CVs, Reading offers high-tech offices within a rare oasis of beautiful countryside. You can step straight from your desk into fresh air, idyllic river walks, history, and, of course, a lively choice of shops and restaurants.



Forbury Gardens

Reading University and
Henley Business School
TOP 1% of
worldwide universities



Veeno


 **UK's No1**
tech cluster



University of Reading



13 of the top
GLOBAL
COMPANIES
have offices in Reading


20%
of students
remain in
Reading after
graduation



The French Horn

Reading Bridge



TOP 3 UK
workforce for
productivity



The Oracle

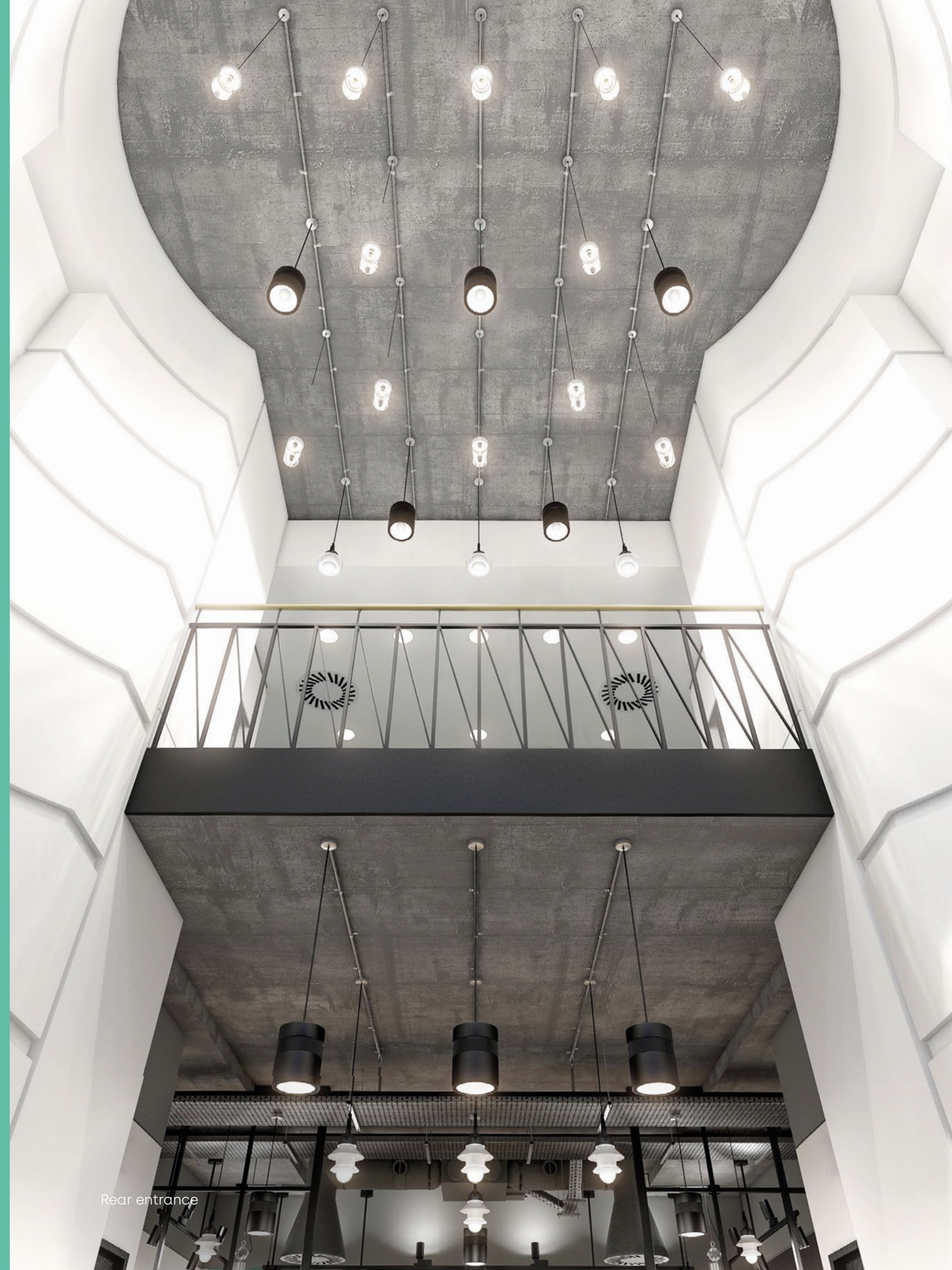
 **Fastest**
growing
economy
in the UK



Rear entrance lounge

Building Specification

- 79,000 sq ft office space
- New north side courtyard arrival area, seating and coffee shop
- Feature lake with deck area
- Outdoor chill-out zone
- Entrance CCTV
- Feature south entrance canopy providing full weather cover
- Dedicated shower block with lockers, drying rooms and WC's
- 10 car charging points, 316 car parking spaces
- Covered and secure 50 space cycle storage
- Fully accessible perforated metal ceilings and raised floors in offices, with plasterboard margins
- 4 pipe fan-coil air-conditioning system



Rear entrance

Earley East: Synergy for a creative working life

Earley East

Rear entrance

the earley

Earley East
Thames Valley Park Drive
Reading, RG6 1PT

CBRE

Luke Hacking
020 7182 2169
luke.hacking@cbre.com

Peter York
020 7182 3280
peter.york@cbre.com

cbre.com

DTRE

Simon Glenn
020 3328 9094
simon.glenn@dtre.eu

Alex Lowdell
020 3328 9099
alex.lowdell@dtre.eu

dtre.eu

theearleybuildings.co.uk

CBRE & DTRE give notice that these particulars are set out as a general outline only for the guidance of intending Purchasers or Lessees and do not constitute any part of an offer or contract. Details are given without any responsibility and any intending Purchasers, Lessees or Third Party should not rely on them as statements or representations of fact, but must satisfy themselves by inspection or otherwise as to the correctness of each of them. No person in the employment of CBRE or DTRE has any authority to make any representation or warranty whatsoever in relation to this property. **Designed & produced by Mammal / mammaldesign.com**



Earley East 
Part of The Earley Buildings

theearleybuildings.co.uk