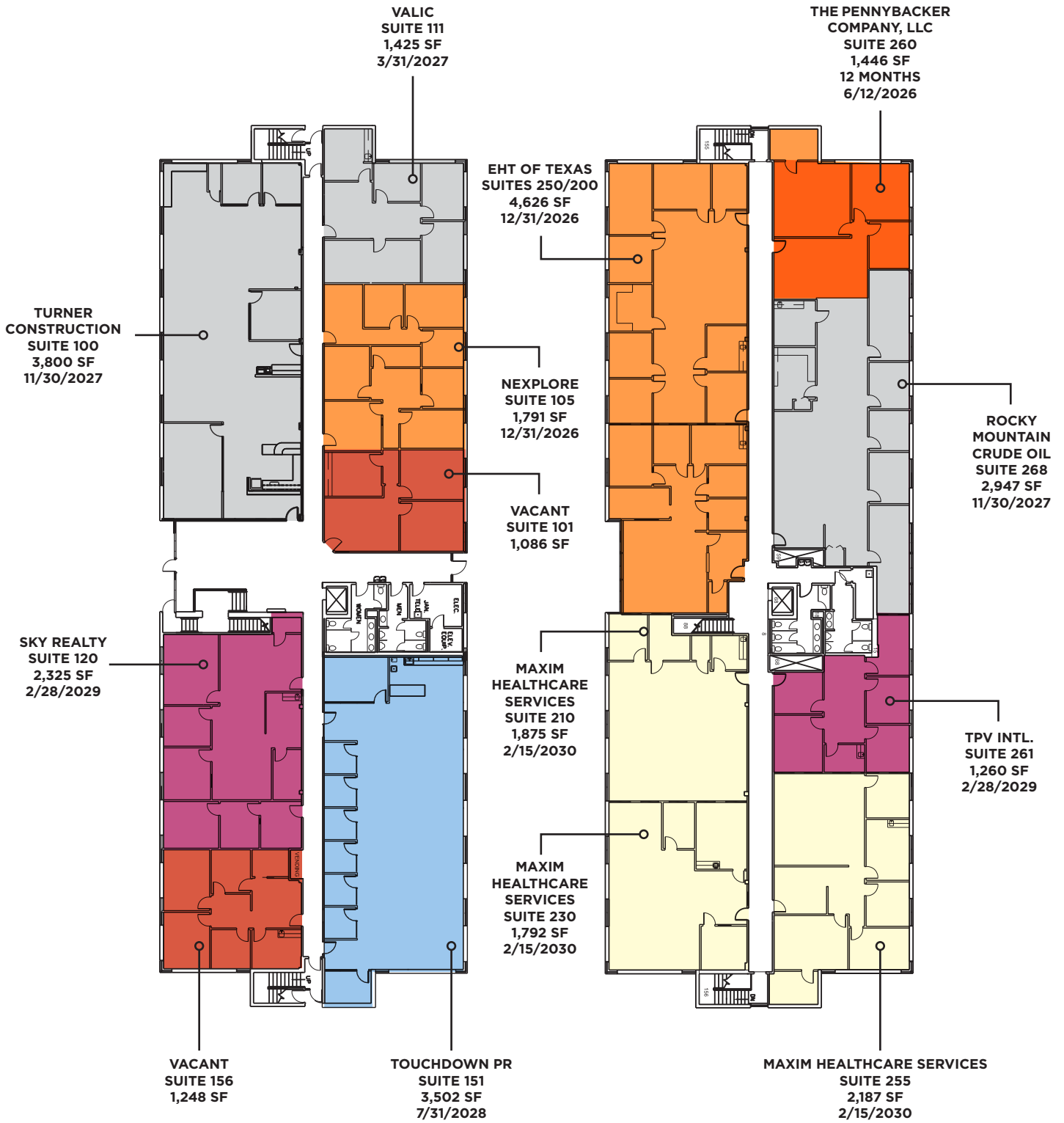


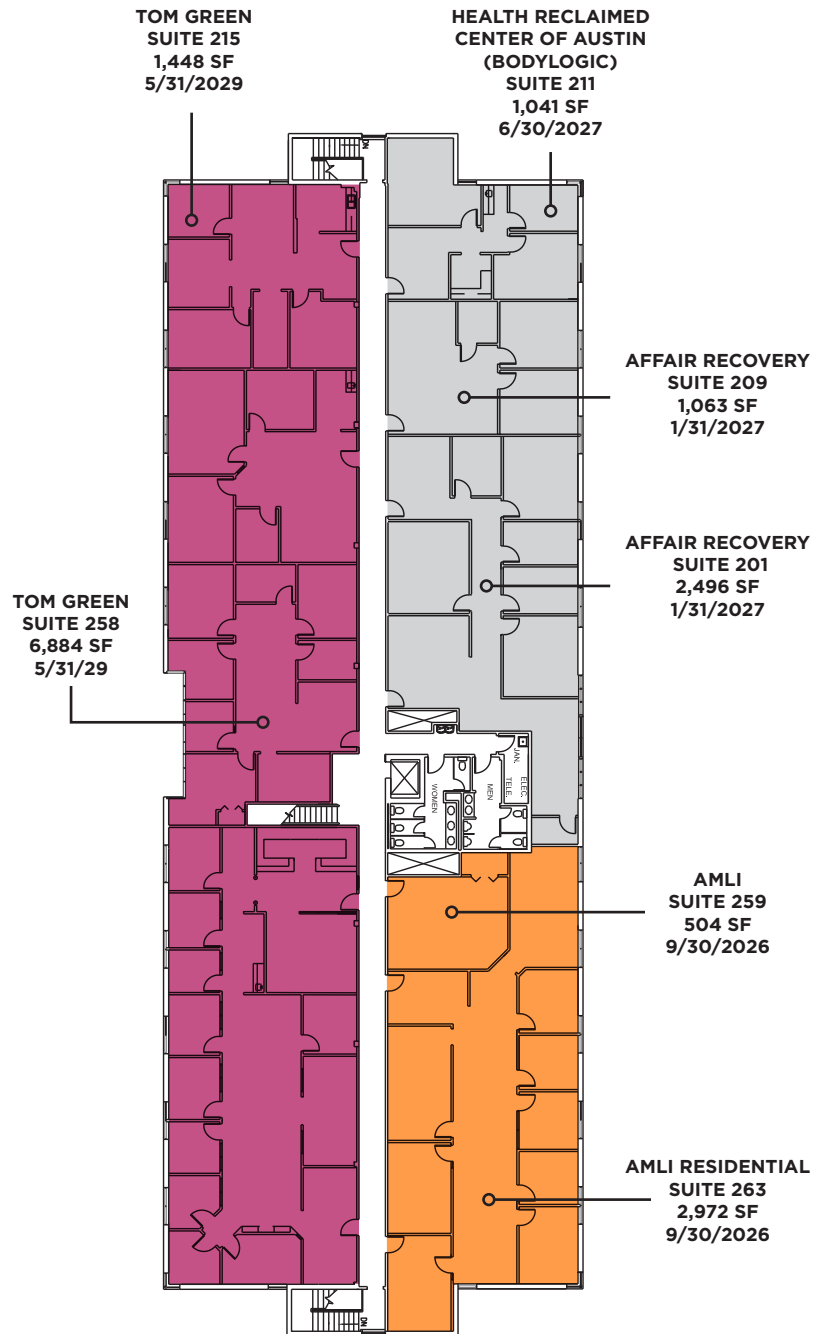
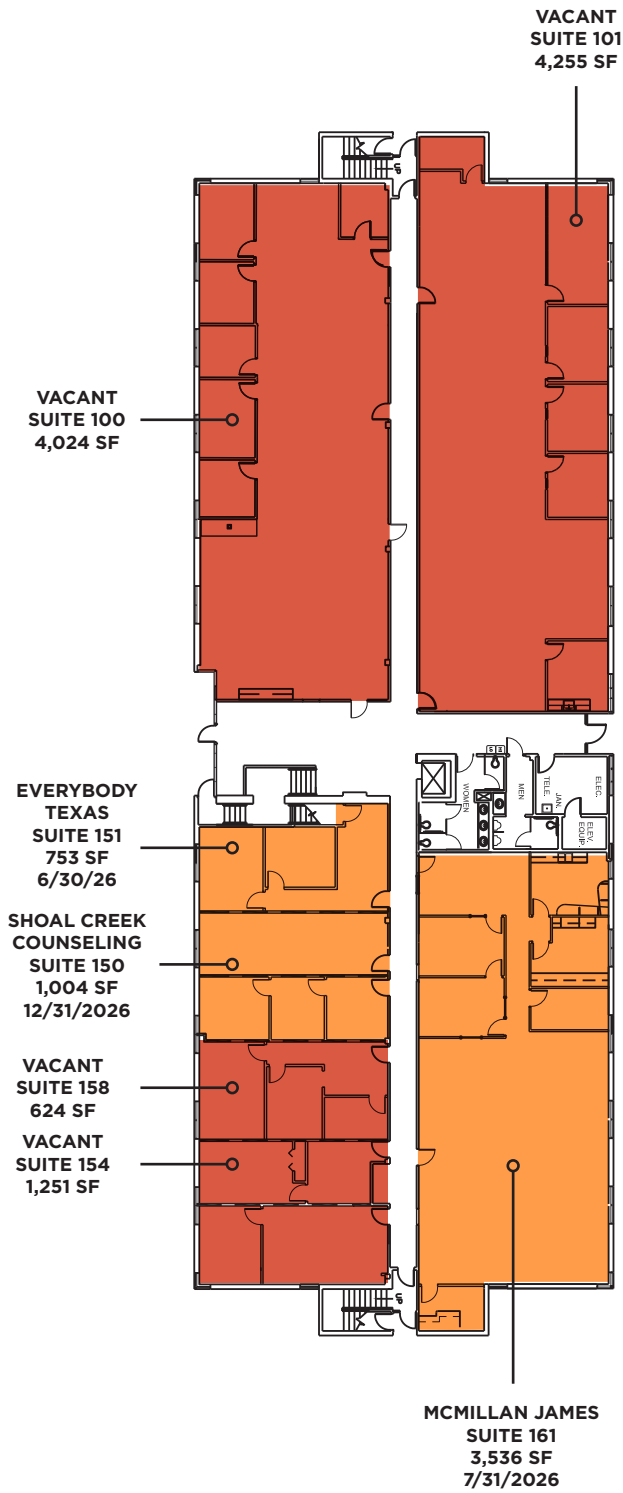
**Benbrook Building
Floor 1**

**Benbrook Building
Floor 2**



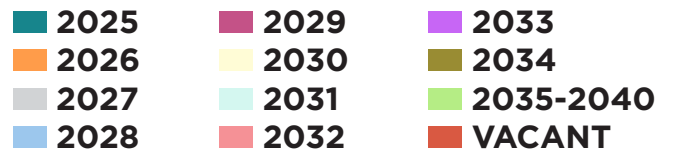
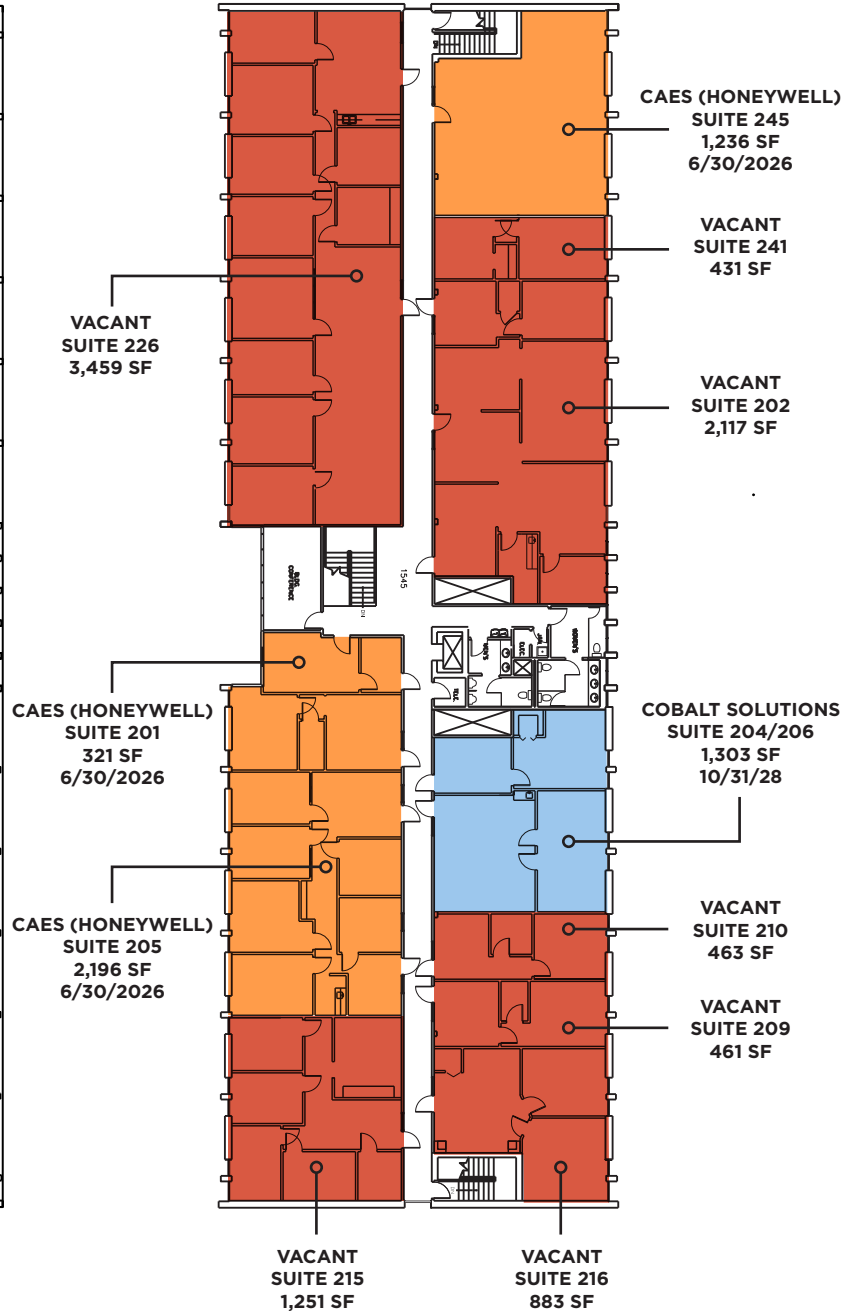
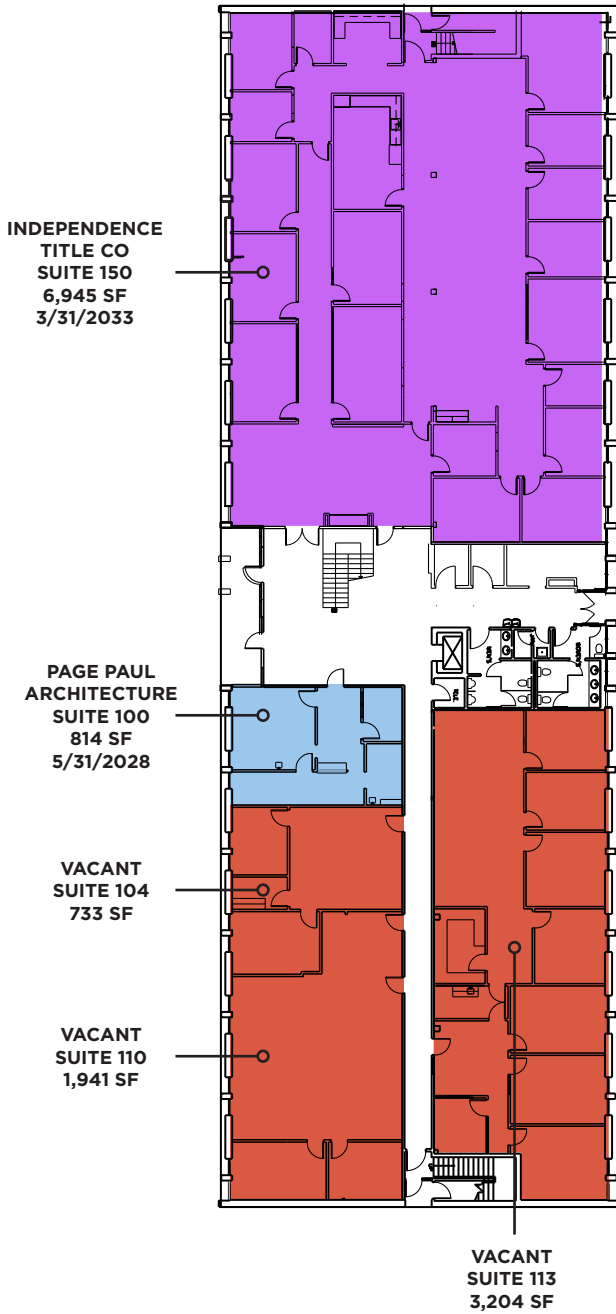
**Bridgeport Building
Floor 1**

**Bridgeport Building
Floor 2**



**Buchanan Building
Floor 1**

**Buchanan Building
Floor 2**



Colorado Building
Floor 1

Colorado Building
Floor 2

AMERGIS / MAXIM
HEALTHCARE
SUITE 150
7,412 SF
5/31/2027

CRAWFORD CONSULTING
SUITE 260
2,193 SF
5/31/2028

VACANT
SUITE 250
1,278 SF
3/1/2026

BRAIN ASSOCIATION
SUITE 201
1,033 SF
9/14/2027

CS CIVIL GROUP, LLC
SUITE 209
1,968 SF
6/30/2026

ARC THERAPY
SERVICES
SUITE 200, 210
5,779 SF
2/28/2029

STAFFMARK
SUITE 120
1,538 SF
7/31/2030

B&Z HOMES, INC DBA SUNROOM
SUITE 207+254
2,360 SF
2/29/2028

WESTWAY
WORKFORCE
SUITE G50
799 SF
6/30/2029

WSP
SUITE 100
6,082 SF
5/31/2026

PONDWORKS PA
SUITE G60
756 SF
9/30/2027

WSP
SUITE G18
616 SF
5/31/2026
(REN OPT)

PONDWORKS PA
SUITE G70
3,448 SF
9/30/2027

SUPPORT
SPACE

AUSTIN OAKS GYM
SUITE G10
3,036 SF

 2025	 2029	 2033
 2026	 2030	 2034
 2027	 2031	 2035-2040
 2028	 2032	 VACANT

**Cross Building
Floor 1**

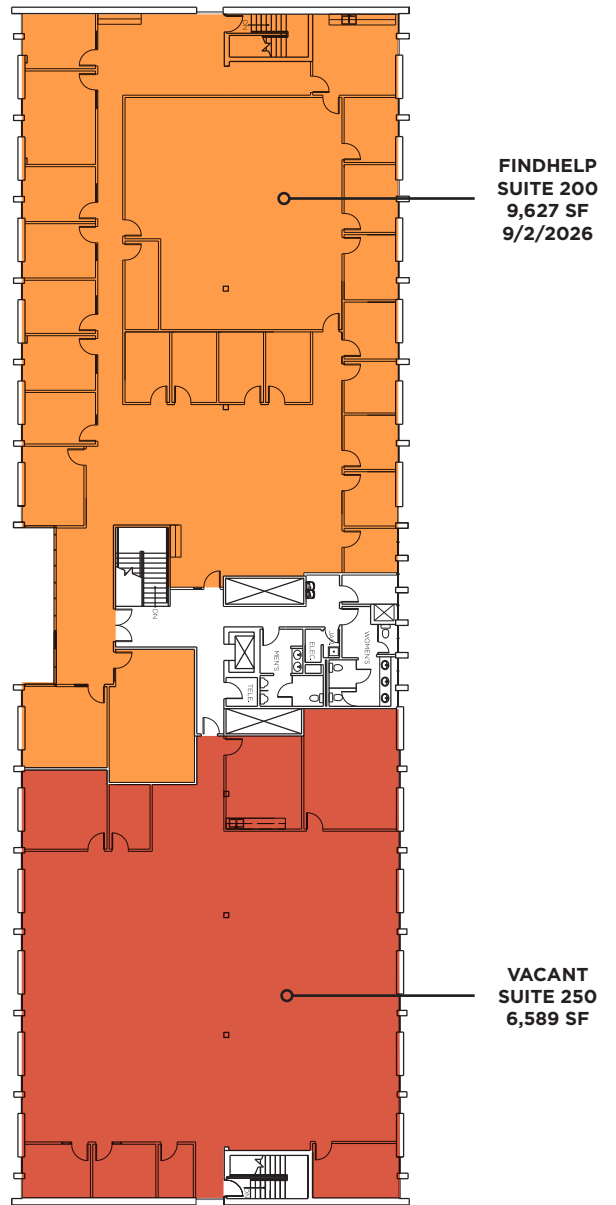
**Cross Building
Floor 2**



■ 2025	■ 2029	■ 2033
■ 2026	■ 2030	■ 2034
■ 2027	■ 2031	■ 2035-2040
■ 2028	■ 2032	■ VACANT

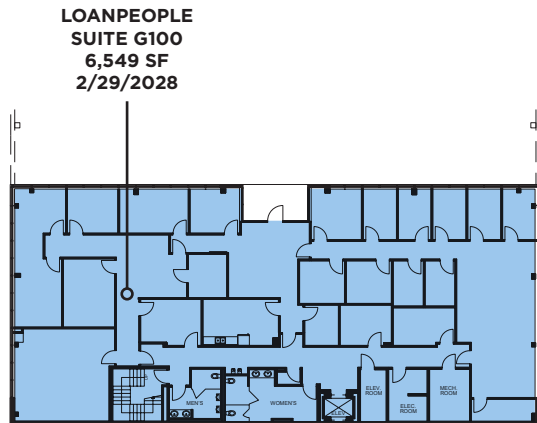
Hubbard Building
Floor 1

Hubbard Building
Floor 2

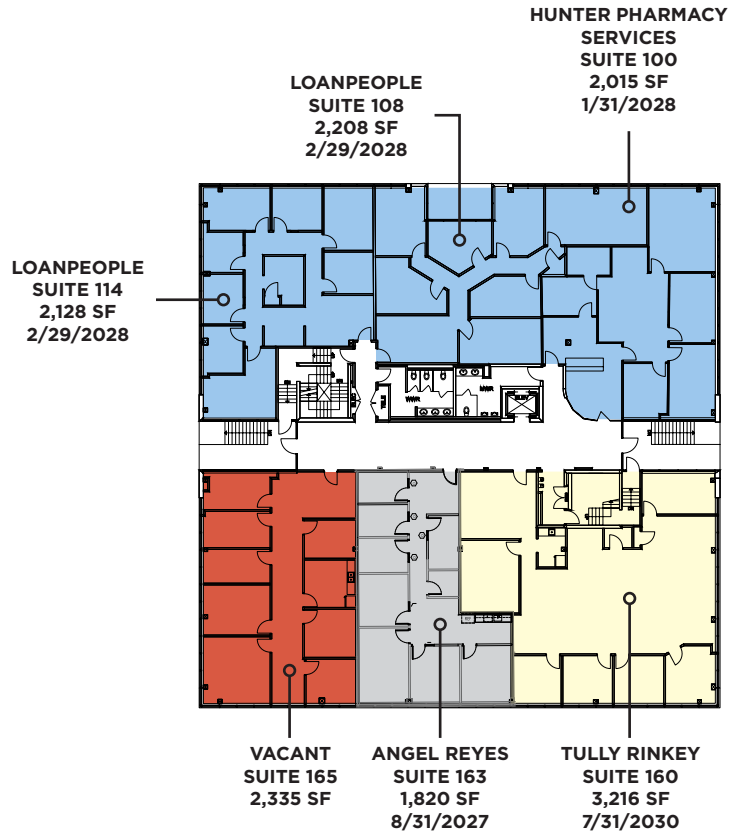


- | | | |
|------|------|-----------|
| 2025 | 2029 | 2033 |
| 2026 | 2030 | 2034 |
| 2027 | 2031 | 2035-2040 |
| 2028 | 2032 | VACANT |

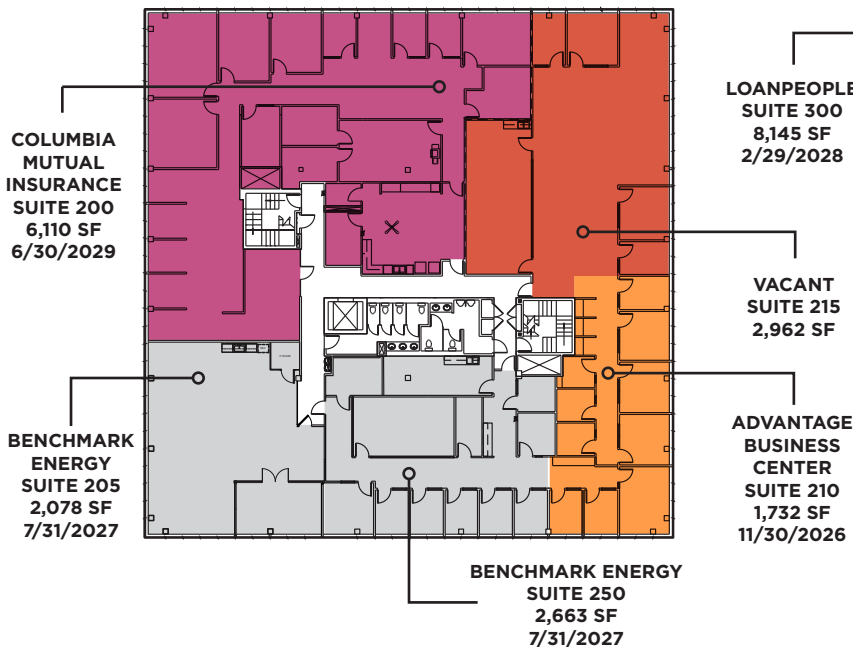
Livingston Building
Floor G



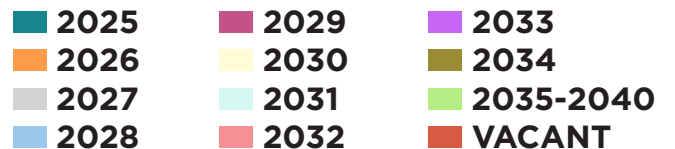
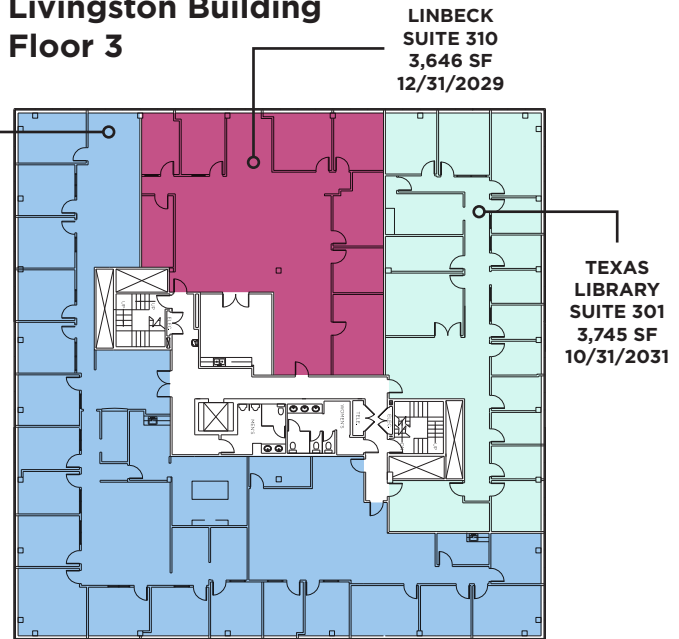
Livingston Building
Floor 1



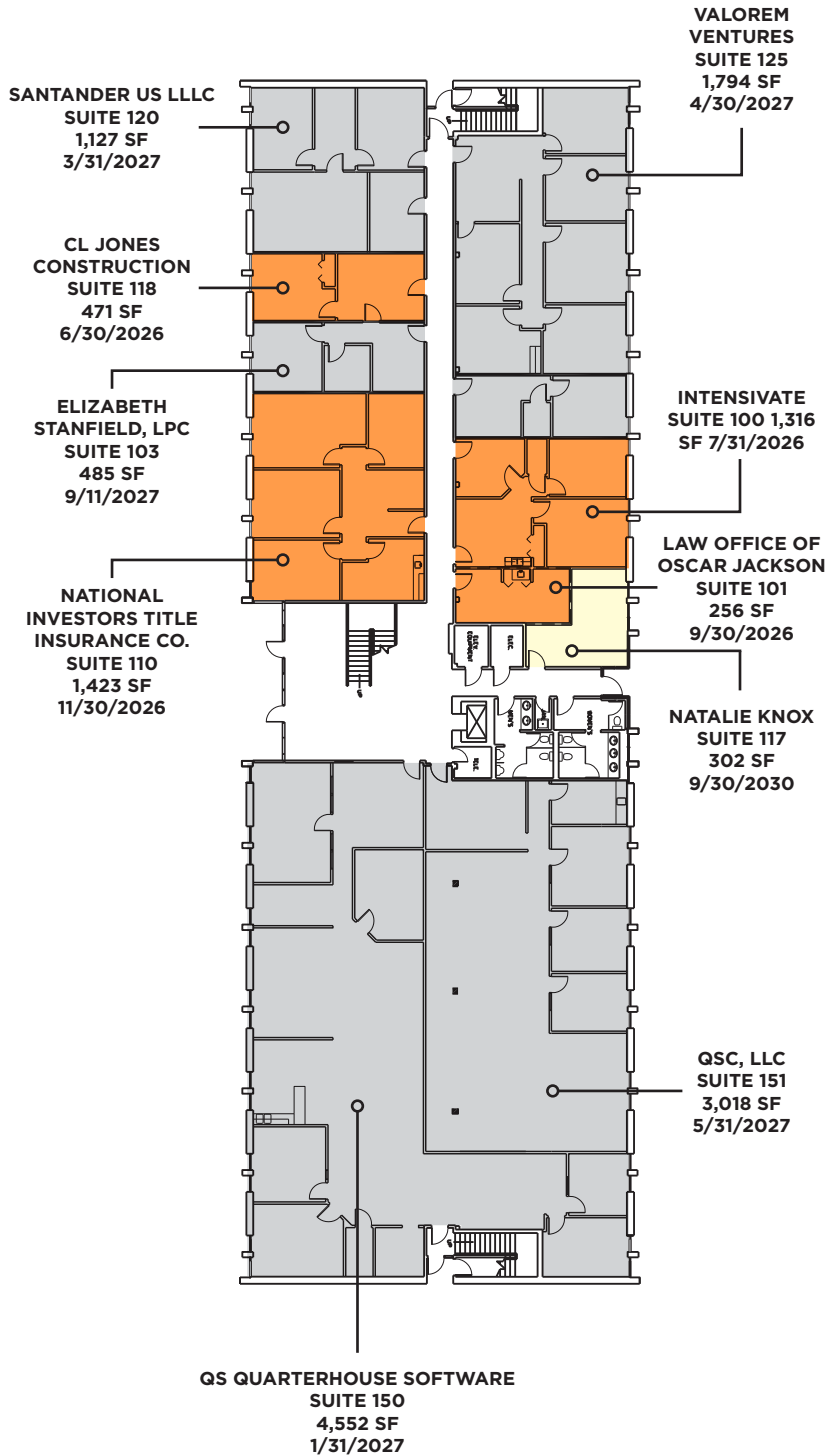
Livingston Building
Floor 2



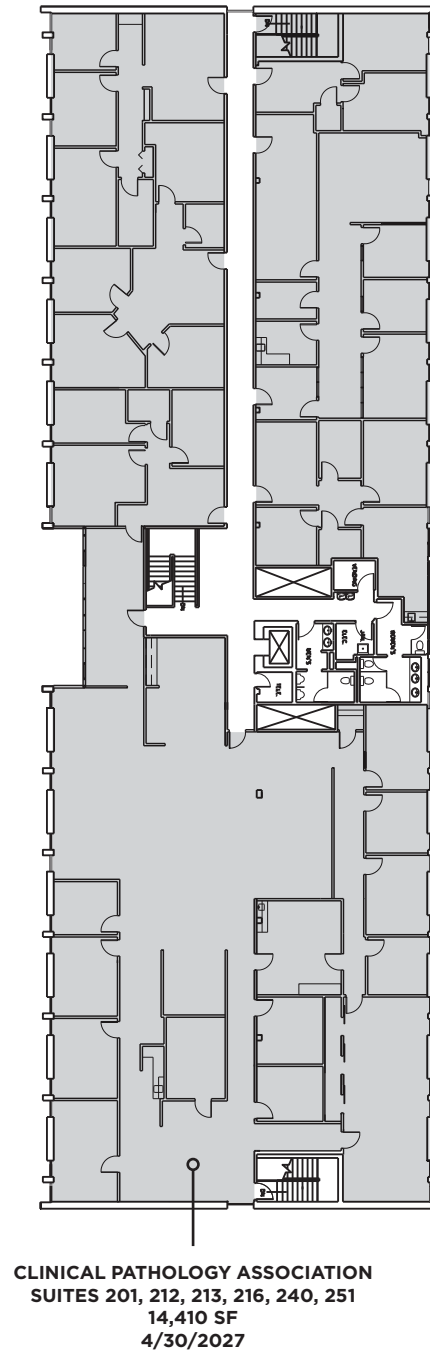
Livingston Building
Floor 3



Medina Building
Floor 1

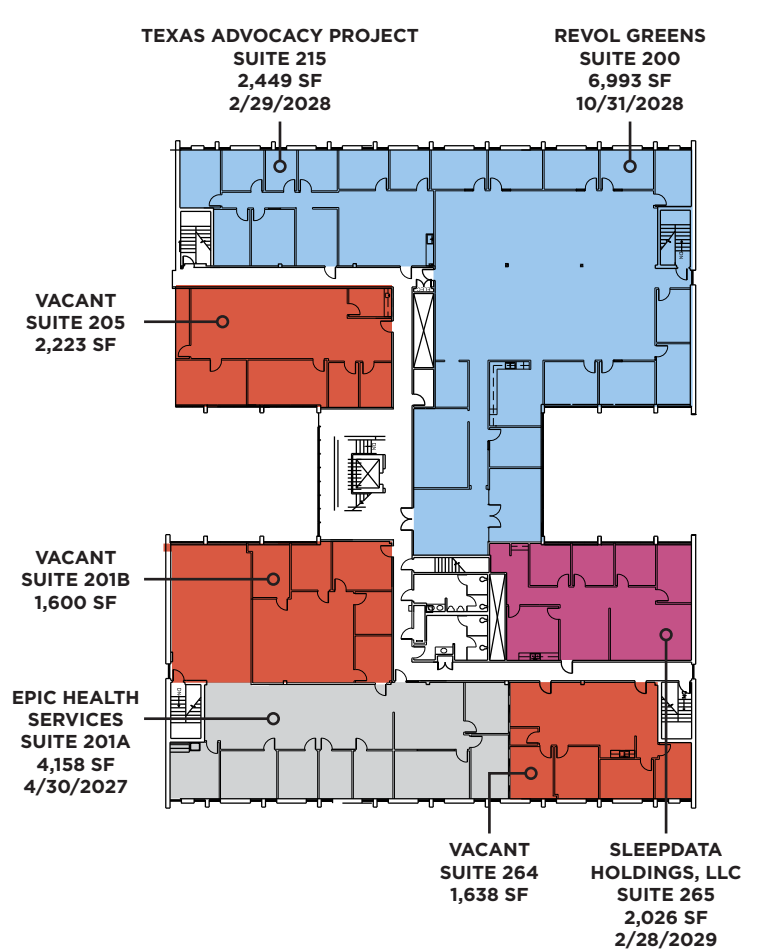
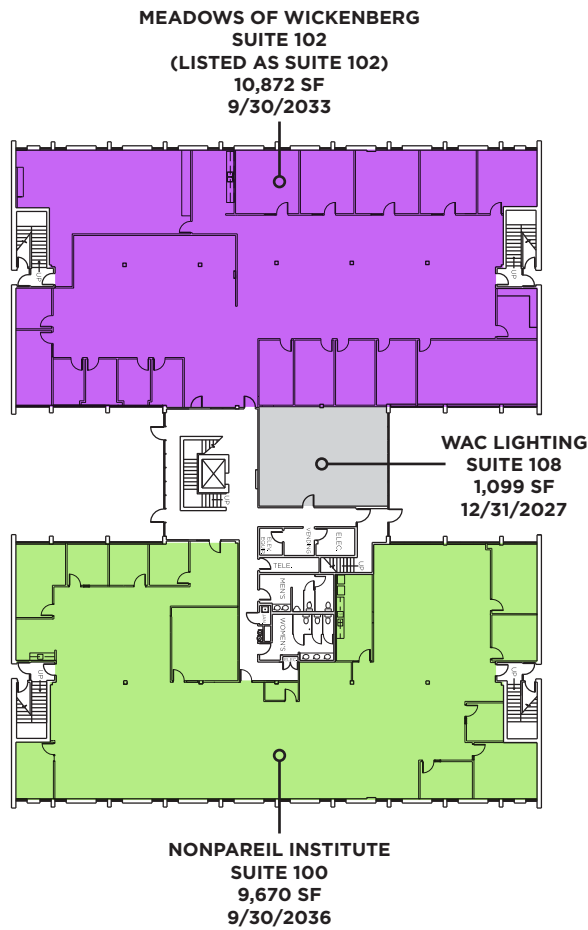


Medina Building
Floor 2



**Meredith Building
Floor 1**

**Meredith Building
Floor 2**

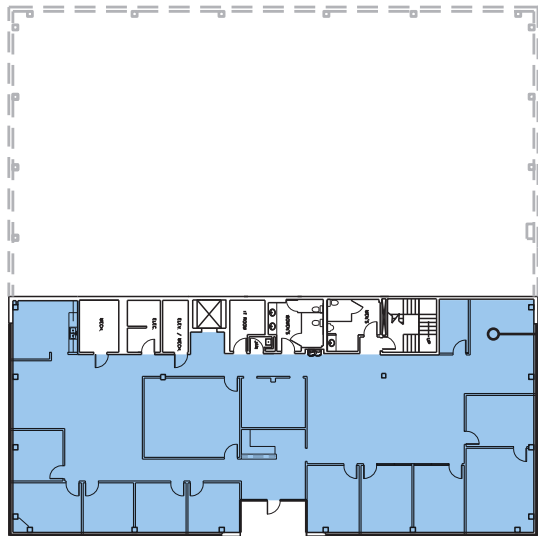


Proctor Building
Floor 1

Proctor Building
Floor 2

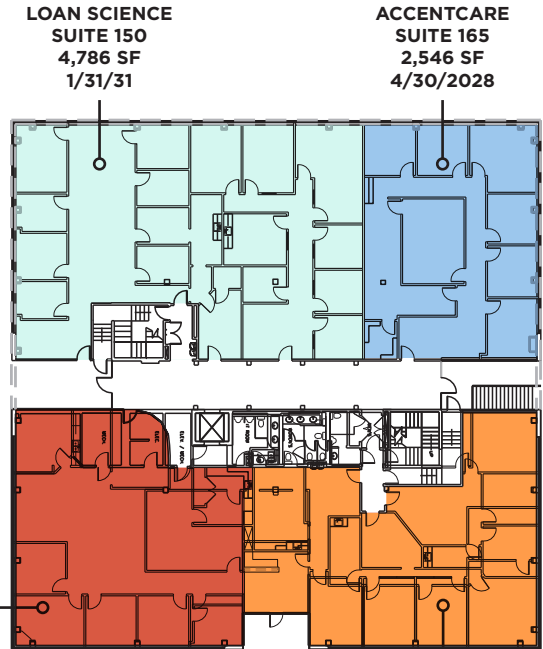


**Travis Building
Floor G**



ACCENTCARE
SUITE G100
6,419 SF
4/30/2028

**Travis Building
Floor 1**



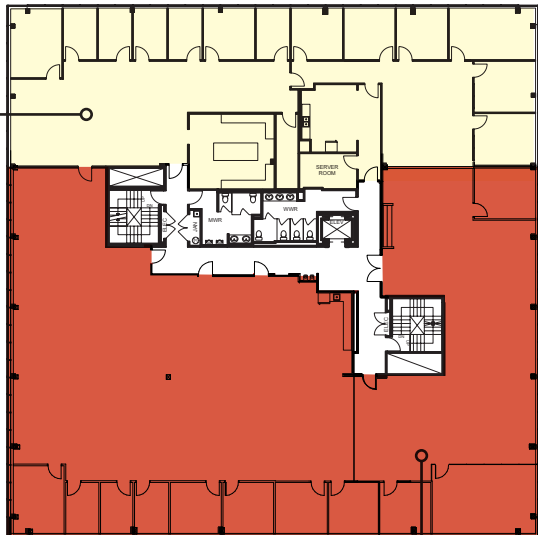
LOAN SCIENCE
SUITE 150
4,786 SF
1/31/31

ACCENTCARE
SUITE 165
2,546 SF
4/30/2028

VACANT
SUITE 100
3,160 SF

KEY TITLE GROUP
SUITE 125
3,237 SF
9/30/2026

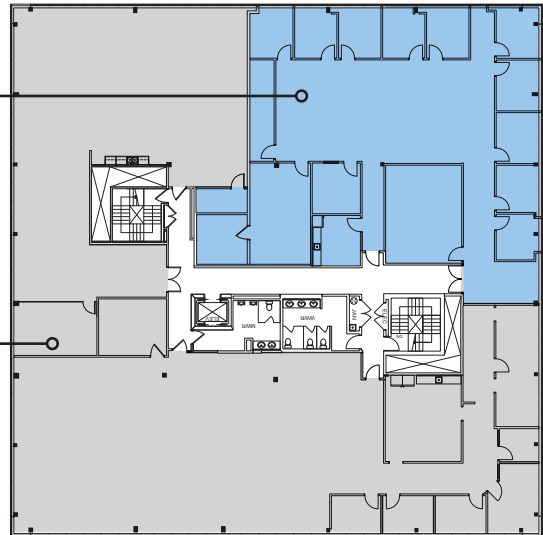
**Travis Building
Floor 2**



GANNETT
FLEMING INC.
SUITE 250
5,482 SF
5/31/2030

VACANT
SUITE 200
9,781 SF

**Travis Building
Floor 3**



ACCENTCARE
SUITE 350
4,876 SF
4/30/2028

STRIVE WORKS INC.
SUITE 300
10,222 SF
2/28/2027

■ 2025	■ 2029	■ 2033
■ 2026	■ 2030	■ 2034
■ 2027	■ 2031	■ 2035-2040
■ 2028	■ 2032	■ VACANT

**Whitney Building
Floor 1**

**Whitney Building
Floor 2**

