

FOR LEASE

1175 Woods Crossing Rd. Greenville, SC 29607

NAI Earle Furman

\$21.00/SF NNN



Retail Space | 1,000 SF

- Suite 2A available
- Next to Haywood Mall; (SC's largest mall with 1.25 million square feet)
- New shopping center tenants include Basilico and Classic Carolina Home
- Neighboring business uses include: Prisma Health Patewood Hospital, St. Francis Eastside, and Fluor Enterprises, Inc.
- Excellent visibility and easy access
- Pylon signage available
- Zoned C-3 City of Greenville
- Large daytime population



Jimmy Wright

O: +1 864 232 9040

jwright@furmancap.com



Geoff Beans

O: +1 419 913 6903

gbeans@naiearlefurman.com

No Warranty, Or Representation, Express Or Implied, Is Made As To The Accuracy Of The Information Contained Herein, And The Same Is Submitted Subject To Errors, Omissions, Change Of Price, Rental Or Other Conditions, Prior Sale, Lease Or Financing, Or Withdrawal Without Notice, And Of Any Special Listing Conditions Imposed By Our Principals. No Warranties Or Representations Are Made As To The Condition Of The Property Or Any Hazards Contained Therein Are Any To Be Implied.



101 E Washington Street
Greenville, SC 29601
naief.com

FOR LEASE

1175 Woods Crossing Rd. Greenville, SC 29607



Map data ©2019 Google Imagery ©2019, City of Greenville GIS, Maxar Technologies, U.S. Geological Survey, USDA Farm Service Agency



Map data ©2019 Google

✉ **Jimmy Wright**
O: +1 864 232 9040
jwright@furmancap.com

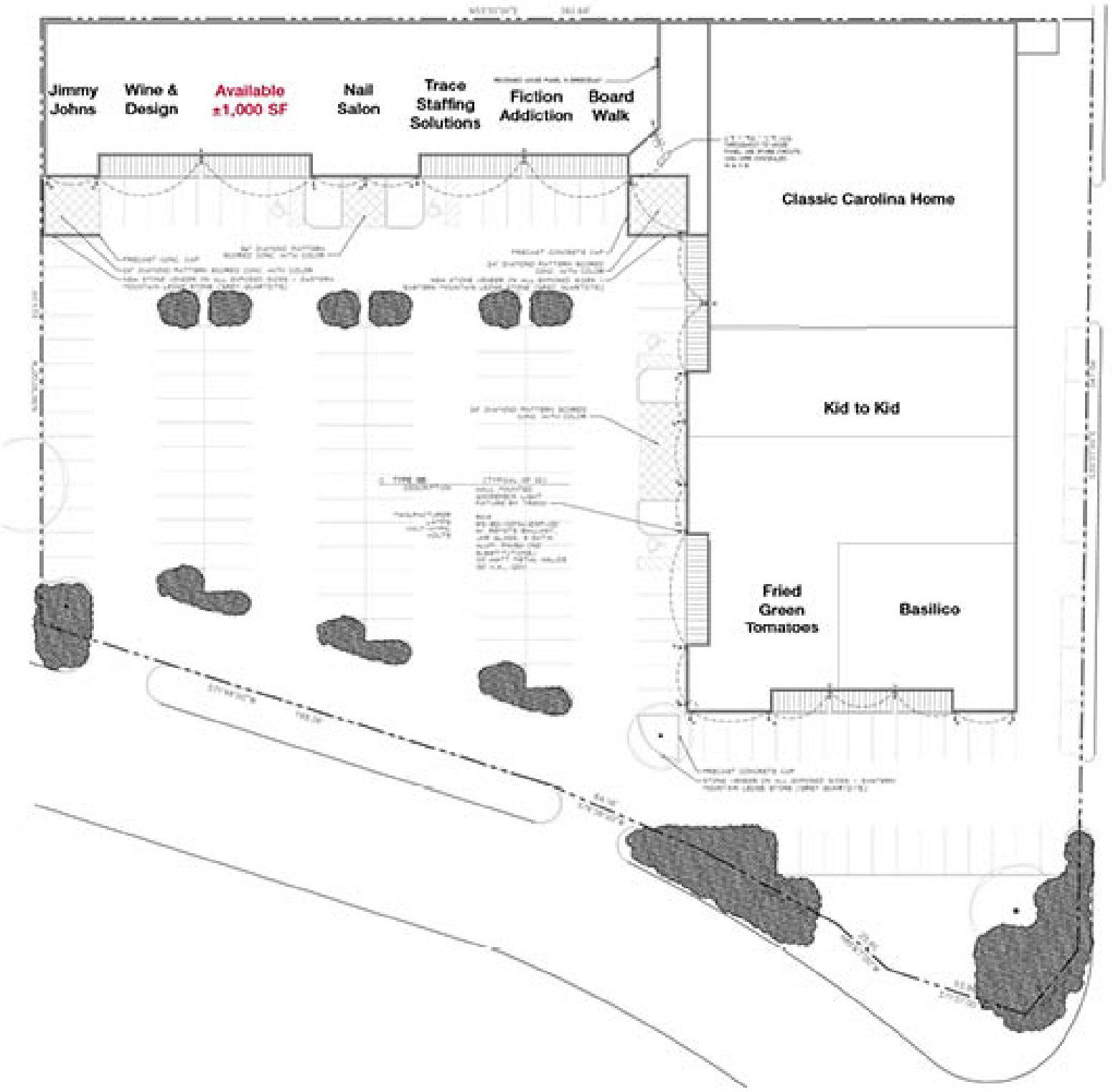
✉ **Geoff Beans**
O: +1 419 913 6903
gbeans@naiearlefurman.com

No Warranty Or Representation, Express Or Implied, Is Made As To The Accuracy Of The Information Contained Herein, And The Same Is Submitted Subject To Errors, Omissions, Change Of Price, Rental Or Other Conditions, Prior Sale, Lease Or Financing, Or Withdrawal Without Notice, And Of Any Special Listing Conditions Imposed By Our Principals No Warranties Or Representations Are Made As To The Condition Of The Property Or Any Hazards Contained Therein Are Any To Be Implied.

NAI Earle Furman

FOR LEASE

1175 Woods Crossing Rd. Greenville, SC 29607



✉ **Jimmy Wright**
O: +1 864 232 9040
jwright@furmancap.com

✉ **Geoff Beans**
O: +1 419 913 6903
gbeans@naiearlefurman.com

No Warranty Or Representation, Express Or Implied, Is Made As To The Accuracy Of The Information Contained Herein, And The Same Is Submitted Subject To Errors, Omissions, Change Of Price, Rental Or Other Conditions, Prior Sale, Lease Or Financing, Or Withdrawal Without Notice And Of Any Special Listing Conditions Imposed By Our Principals No Warranties Or Representations Are Made As To The Condition Of The Property Or Any Hazards Contained Therein Are Any To Be Implied.

NAI Earle Furman