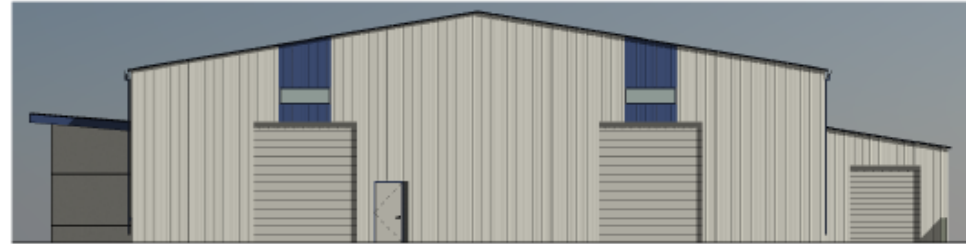


4 SHELL B NORTH OB
1/8" = 1'-0"



3 SHELL B SOUTH OB
1/8" = 1'-0"



2 SHELL B EAST OB
1/8" = 1'-0"

EXTERIOR FINISH LEGEND

NOTE: FINISHES LISTED BELOW ARE TO ESTABLISH A BUDGET AND ARE NOT THE FINAL SELECTIONS.

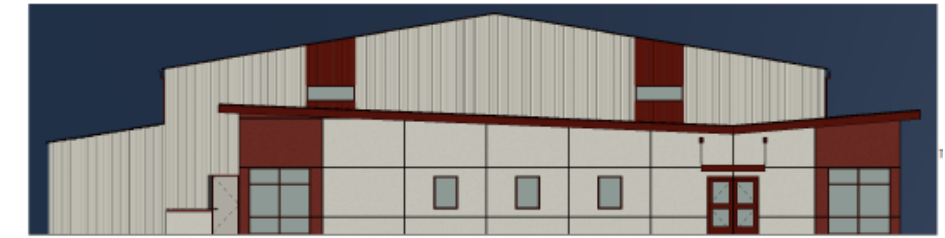
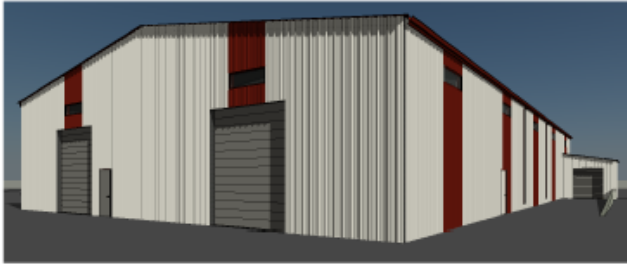
FINISH COLORS

MFR: CO BUILDING SYSTEMS
COLOR NAME: ASH GRAY

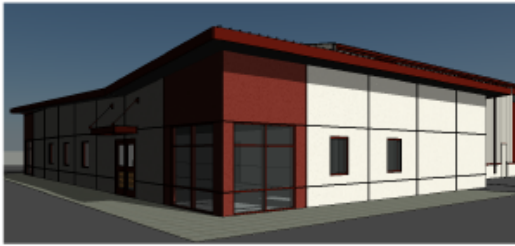
MFR: CO BUILDING SYSTEMS
COLOR NAME: OCEAN BLUE



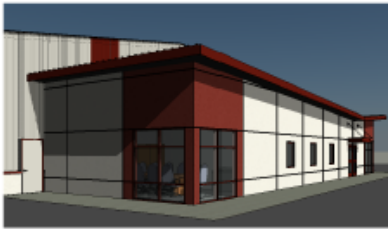
1 SHELL B WEST OB
1/8" = 1'-0"



4 SHELL B NORTH BR
1/8" = 1'-0"



3 SHELL B SOUTH BR
1/8" = 1'-0"



2 SHELL B EAST BR
1/8" = 1'-0"

EXTERIOR FINISH LEGEND

*NOTE: FINISHES LISTED BELOW ARE TO ESTABLISH A BUDGET AND ARE NOT THE FINAL SELECTIONS

FINISH COLORS

MFR: CO BUILDING SYSTEMS
COLOR NAME: ASH GREY

MFR: CO BUILDING SYSTEMS
COLOR NAME: BRICK RED



1 SHELL B WEST BR
1/8" = 1'-0"



4 SHELL B NORTH FG
1/8" = 1'-0"



3 SHELL B SOUTH FG
1/8" = 1'-0"



2 SHELL B EAST FG
1/8" = 1'-0"

EXTERIOR FINISH LEGEND

NOTE: FINISHES LISTED BELOW ARE TO ESTABLISH A BUDGET AND ARE NOT THE FINAL SELECTIONS

FINISH COLORS

MFR: CO BUILDING SYSTEMS
COLOR NAME: ASH GREY



MFR: CO BUILDING SYSTEMS
COLOR NAME: FOREST GREEN



1 SHELL B WEST FG
1/8" = 1'-0"