

AVAILABLE FOR SALE OR LEASE

1,400 SF FREESTANDING BANK BUILDING

100 MCDONALD DRIVE, TROY, IL

RETAIL



CONTACT US

Nick Garavaglia

+1 314 655 5827
nick.garavaglia@cbre.com

CBRE

190 Carondelet Plaza
Suite 1400
St. Louis, MO 63105

© 2016 CBRE, Inc. This information has been obtained from sources believed reliable. We have not verified it and make no guarantee, warranty or representation about it. Any projections, opinions, assumptions or estimates used are for example only and do not represent the current or future performance of the property. You and your advisors should conduct a careful, independent investigation of the property to determine to your satisfaction the suitability of the property for your needs. Photos herein are the property of their respective owners and use of these images without the express written consent of the owner is prohibited. CBRE and the CBRE logo are service marks of CBRE, Inc. and/or its affiliated or related companies in the United States and other countries. All other marks displayed on this document are the property of their respective owners.

www.cbre.com/stlouis

CBRE

AVAILABLE FOR SALE OR LEASE

1,400 SF FREESTANDING BANK BUILDING

100 MCDONALD DRIVE, TROY, IL

RETAIL



PROPERTY INFO

- + 1,400 SF freestanding bank building on 1.46 AC
- + Branch is well situated on the main thoroughfare in the market adjacent to McDonald's and in close proximity to the interstate.
- + 4 drive-thru lanes plus ATM lane

CONTACT BROKER FOR PRICING



AREA DEMOGRAPHICS

	1 MILES	3 MILES	5 MILES
Population	3,357	20,544	52,624
Median Household Income	\$60,635	\$80,897	\$72,943
Average Household Income	\$72,372	\$91,984	\$88,406
Households	1,416	7,824	20,305

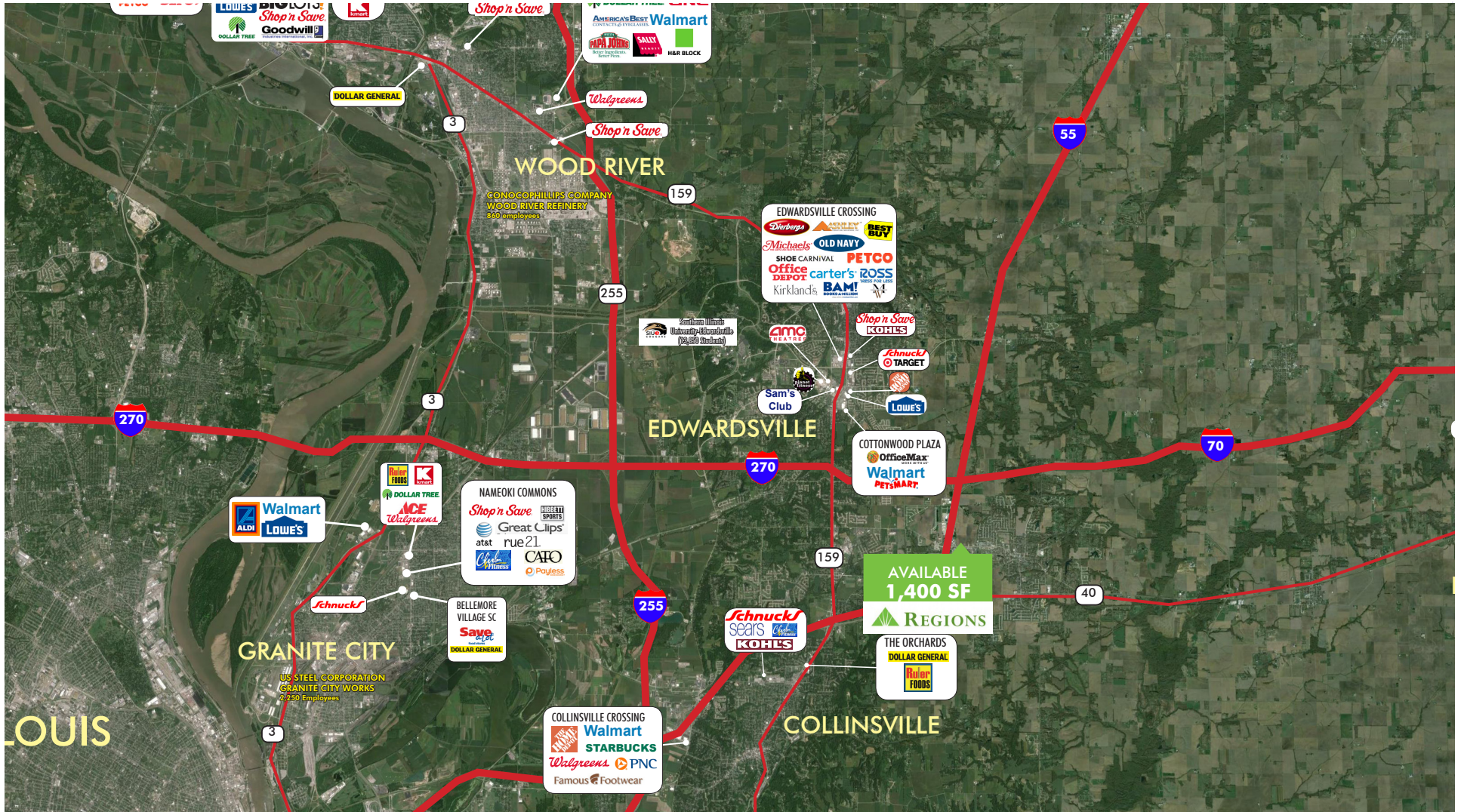


AVAILABLE FOR SALE OR LEASE

TRADE AREA AERIAL

100 MCDONALD DRIVE, TROY, IL

RETAIL



AVAILABLE FOR SALE OR LEASE

SITE AERIAL

100 MCDONALD DRIVE, TROY, IL

RETAIL

