

2.14 Acres Commercial Land Along I-90

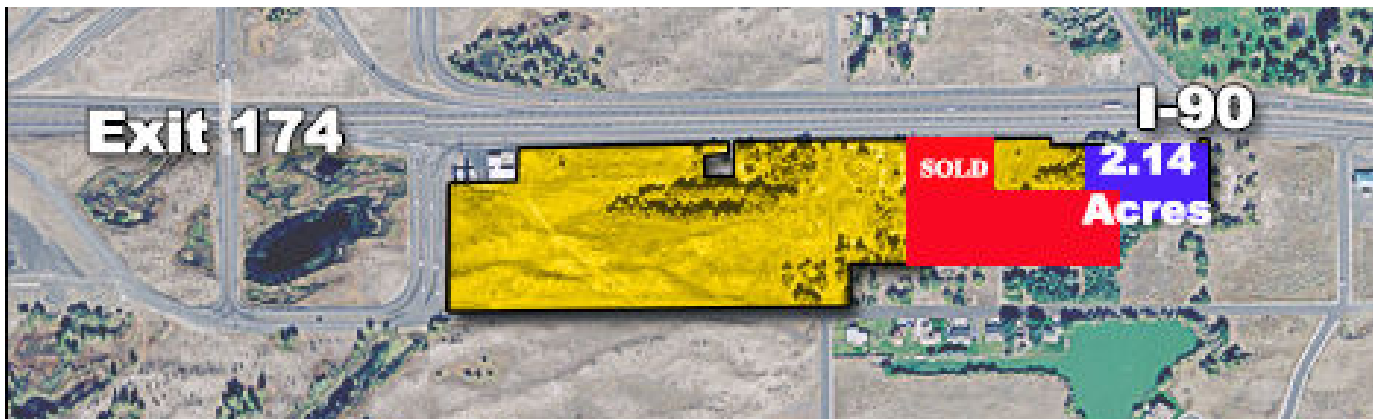
3901 Prichard Rd. Parcel E
Moses Lake, WA 98837

Description: Approximately 2.14 Acres of freeway frontage commercial land along I-90 freeway between Exits 174 & 175. High visibility and high traffic counts. Suitable for any freeway commercial use including retail, hospitality, distribution & services. Seller is also selling adjacent parcels. Seller financing is an option.

Lot Area: Approximately 2.14 Acres

Sale Price: **\$196,455**

**View photos, maps and
printable brochure at:
<http://listing.loopnet.com/16313377>**



Presented By:

Ralph Kincaid

Office 509-765-3337

Fax: 509-765-0435

Cell: 509-750-1822

E-mail: rkincaid@windermere.com


Windermere

Windermere Real Estate/K-2 Realty, LLC
2900 W. Broadway
Moses Lake, WA 98837