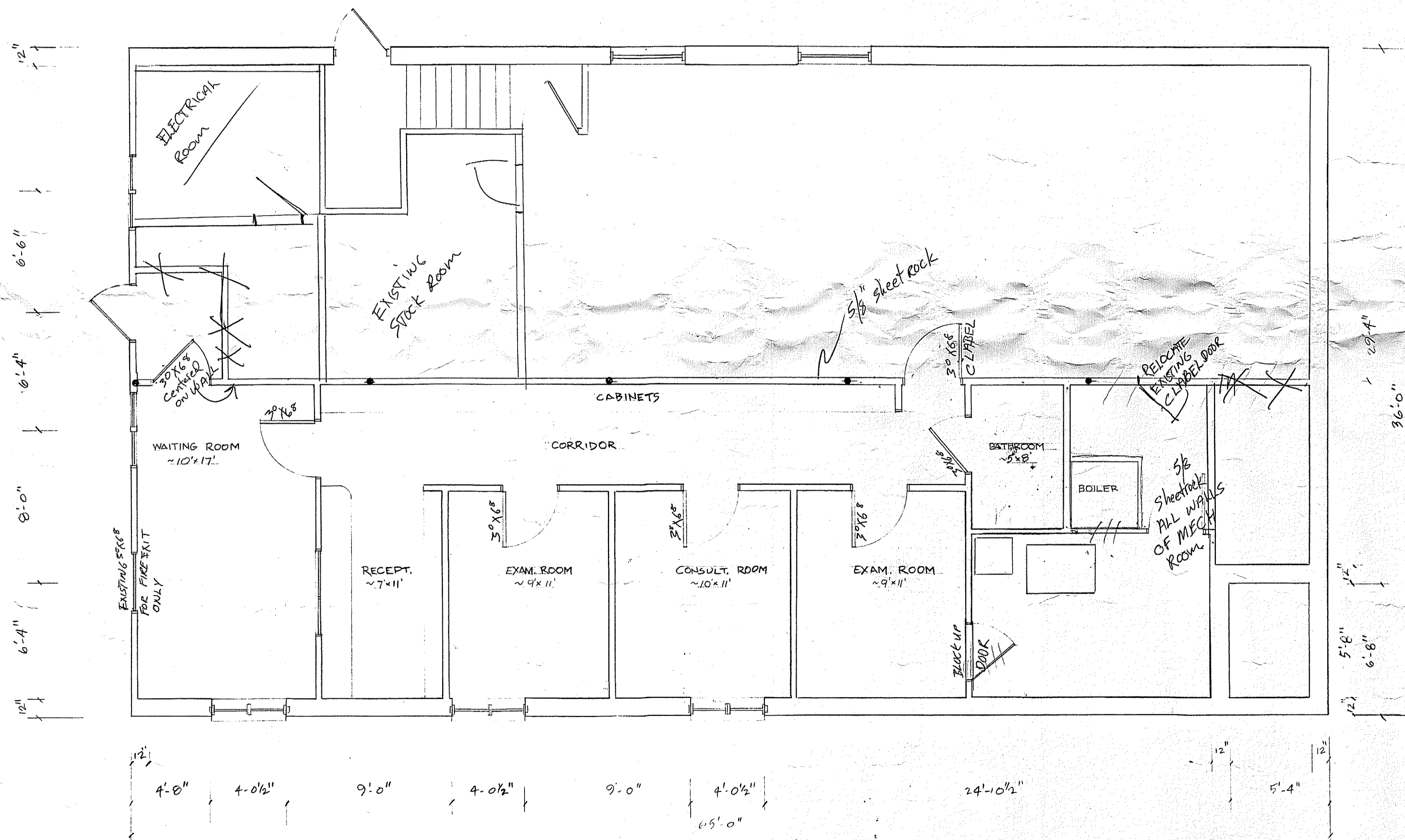


Final
Plan
1-27-84



FOUNDATION PLAN 1/4" = 1'-0"

OVERALL SPACE: 18'-0" x 65'-0"
(LESS AREA OF FURNACE ROOM)

5/8" sheetrock EXISTING ceiling

PROFESSIONAL OFFICE BUILDING:
DRS. AUSTRIAN & SHERLIP
MAIN ST. BRIDGEPORT, CONN.
DATED: 11-9-63
REVISIONS: 1-17-84