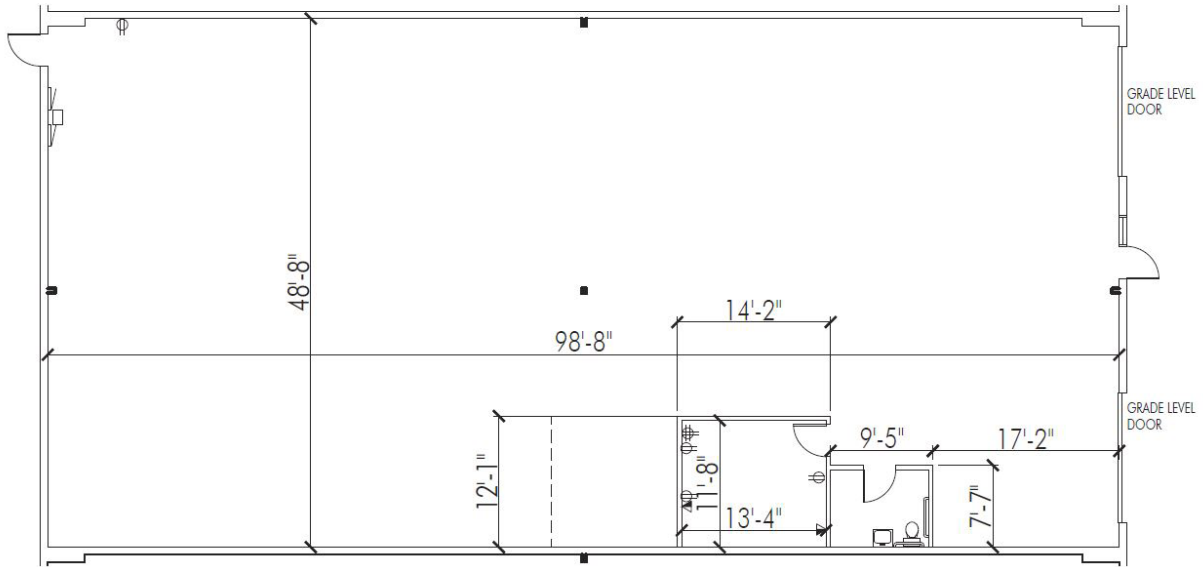


Ideal Warehouse Distribution Location



PROPERTY DESCRIPTION

Unit	Unit E	Power	160 Amps, 480/277 Volts, 3 phase
Total Size	5,000 SF	Available	Immediately
Office	222 SF	Rate	\$9.00 NNN
Clear Height	18'	Other	Located in Adams County Enterprise Zone. Has sprinklers.
Loading	Two 12'w x14'h drive-in doors		



PROPERTY DETAILS: PARK INDUSTRIAL CENTER

Address: 5700 - 6125 E. 56th Ave.
5800 - 6360 E. 58th Ave.

of Buildings: 13

Total Building Area: 465,950 SF

City: Commerce City

County: Adams

Year Built: 1983 - 2017

Construction: Concrete block and tilt-up, metal roofs

Owner: Kew Realty Corporation

Location: Easy access to I-270, I-70 with I-225, I-76



LOCATION



All information contained in this brochure, while not guaranteed, is obtained from sources deemed reliable. No representation is made as to the accuracy thereof and is submitted subject to errors, omissions, change of price, withdrawal or other conditions, without notice. It is the responsibility of either you or your agent to verify its accuracy.

Leasing Contacts | 303-329-8100
Jeremy Spira | jspira@kewrealty.com
Carmen Miller | cmiller@kewrealty.com

KEW
REALTY CORPORATION