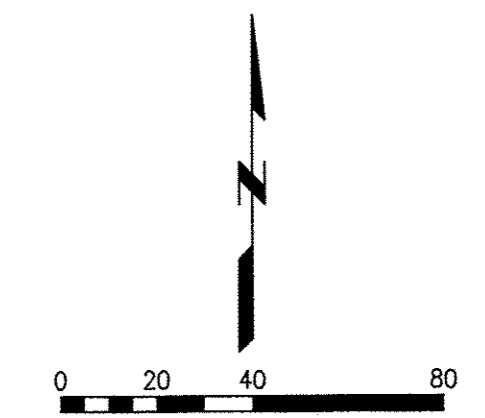
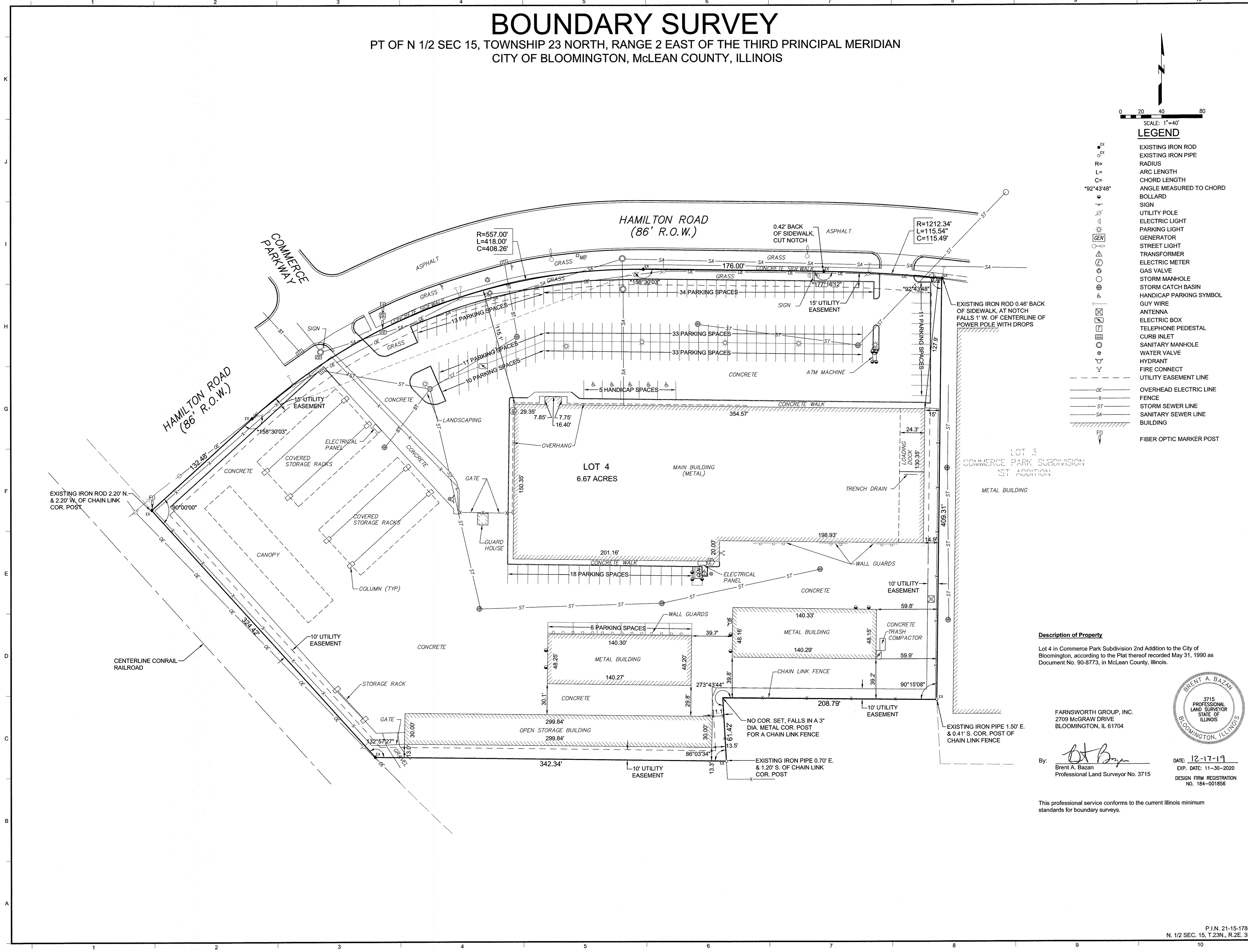


BOUNDARY SURVEY

PT OF N 1/2 SEC 15, TOWNSHIP 23 NORTH, RANGE 2 EAST OF THE THIRD PRINCIPAL MERIDIAN
CITY OF BLOOMINGTON, McLEAN COUNTY, ILLINOIS



- LEGEND**
- EX EXISTING IRON ROD
 - EX EXISTING IRON PIPE
 - R= RADIUS
 - L= ARC LENGTH
 - C= CHORD LENGTH
 - ∠ ANGLE MEASURED TO CHORD
 - BOLLARD
 - SIGN
 - UTILITY POLE
 - ELECTRIC LIGHT
 - PARKING LIGHT
 - GENERATOR
 - STREET LIGHT
 - TRANSFORMER
 - ELECTRIC METER
 - GAS VALVE
 - STORM MANHOLE
 - STORM CATCH BASIN
 - HANDICAP PARKING SYMBOL
 - GUY WIRE
 - ANTENNA
 - ELECTRIC BOX
 - TELEPHONE PEDESTAL
 - CURB INLET
 - SANITARY MANHOLE
 - WATER VALVE
 - HYDRANT
 - FIRE CONNECT
 - UTILITY EASEMENT LINE
 - OVERHEAD ELECTRIC LINE
 - - - FENCE
 - - - ST STORM SEWER LINE
 - - - SA SANITARY SEWER LINE
 - ▭ BUILDING
 - FO FIBER OPTIC MARKER POST



Description of Property

Lot 4 in Commerce Park Subdivision 2nd Addition to the City of Bloomington, according to the Plat thereof recorded May 31, 1990 as Document No. 90-8773, in McLean County, Illinois.

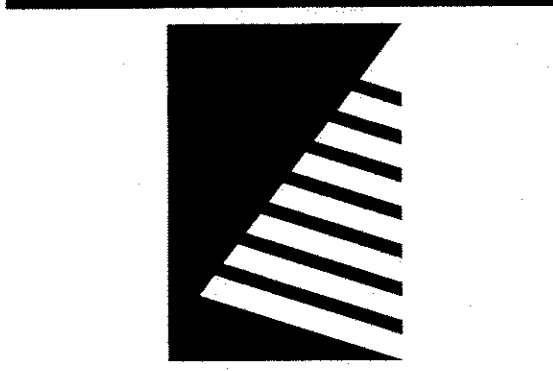
FARNSWORTH GROUP, INC.
2709 MCGRAW DRIVE
BLOOMINGTON, IL 61704

By: *Brent A. Bazan*
Brent A. Bazan
Professional Land Surveyor No. 3715



DATE: 12-17-19
EXP. DATE: 11-30-2020
DESIGN FIRM REGISTRATION NO. 184-001856

This professional service conforms to the current Illinois minimum standards for boundary surveys.



Farnsworth GROUP

2709 MCGRAW DRIVE
BLOOMINGTON, ILLINOIS 61704
(309) 663-8435 / info@f-w.com

www.f-w.com
Engineers | Architects | Surveyors | Scientists

ISSUE: # DATE: DESCRIPTION:

PROJECT:
CORE 3 CONSTRUCTION

1707 E. HAMILTON ROAD

BLOOMINGTON, ILLINOIS

Date: 12/17/19

Design/Drawn: MBB

Reviewed:

Field Book No.: 3019/26

Project No.: 0191952.00

SHEET TITLE:
BOUNDARY SURVEY

SHEET NUMBER:

1

P.I.N. 21-15-178-001
N. 1/2 SEC. 15, T. 23N., R. 2E. 3P.M.

File No.: 24-8720

I:\mccrue\1_2019\0191952.00 - Core 3 Lumber Yard Survey\Survey\07_Drawings\0191952.00 - Core 3 Boundary Survey.dwg | 12/17/2019 7:43 AM |