



17 Park of Commerce

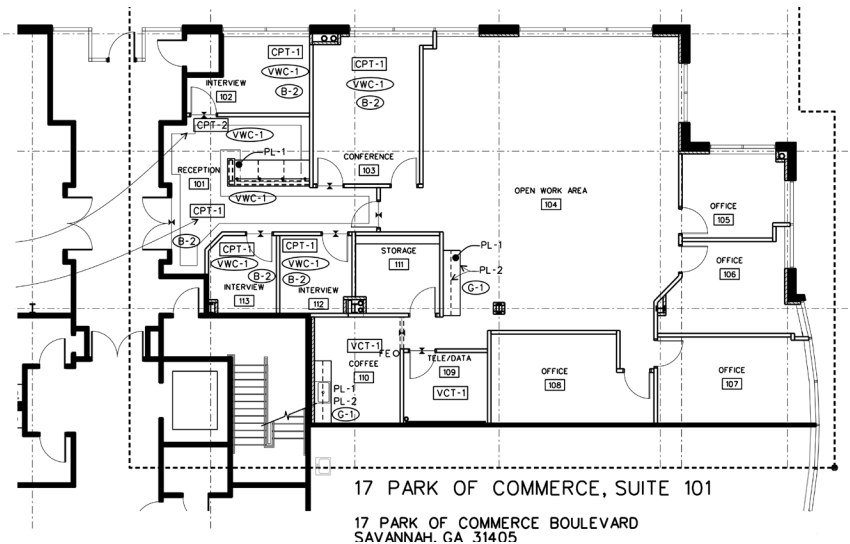
Savannah, Chatham County, GA

Property Features

Class A Office Space For Lease

Multiple Suites Available For Lease

- Suite 101 - 3,327sqft
- Suite 103 - 2,225sqft
- Suite 200 - 4,062sqft
- Suite 201 - 4,656sqft
- Suite 202 - 3,044sqft
- Suite 203 - 2,322sqft



Michael Shaw

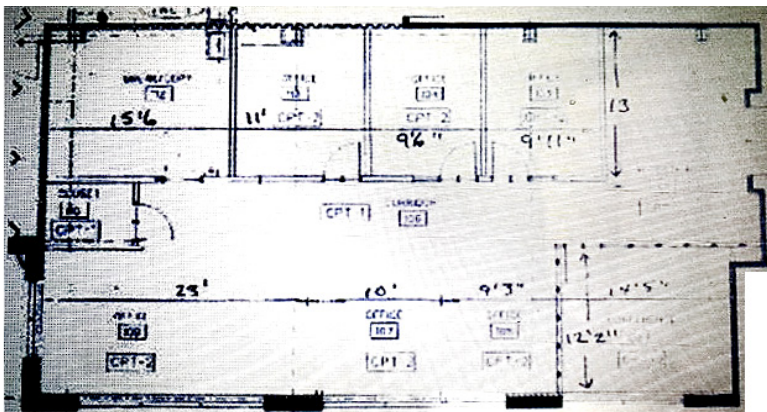
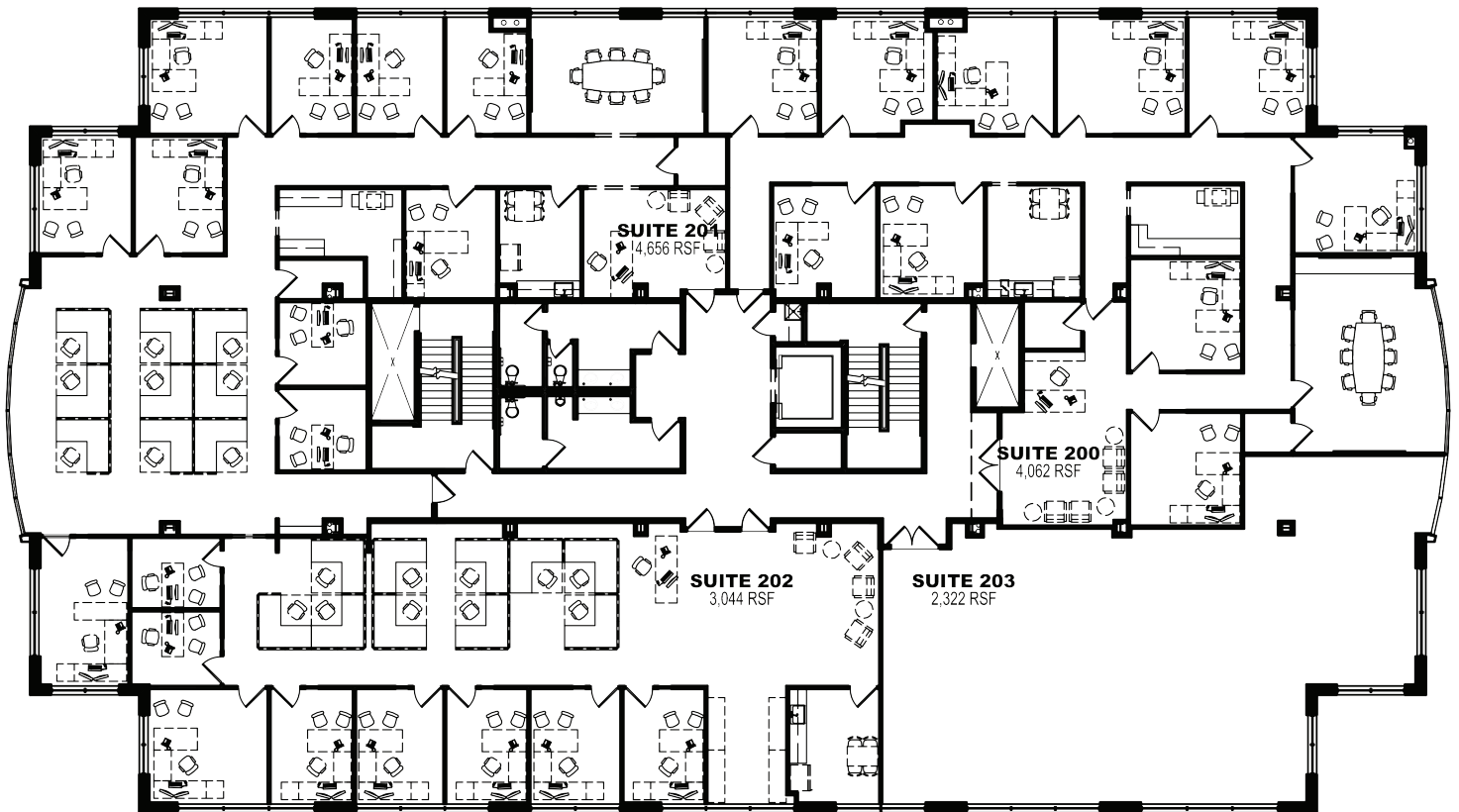
+1 404 408 8843

mshaw@naisavannah.com

NO WARRANTY OR REPRESENTATION, EXPRESS OR IMPLIED, IS MADE AS TO THE ACCURACY OF THE INFORMATION CONTAINED HEREIN, AND THE SAME IS SUBMITTED SUBJECT TO ERRORS, OMISSIONS, CHANGE OF PRICE, RENTAL OR OTHER CONDITIONS, PRIOR SALE, LEASE OR FINANCING, OR WITHDRAWAL WITHOUT NOTICE, AND OF ANY SPECIAL LISTING CONDITIONS IMPOSED BY OUR PRINCIPALS NO WARRANTIES OR REPRESENTATIONS ARE MADE AS TO THE CONDITION OF THE PROPERTY OR ANY HAZARDS CONTAINED THEREIN ARE ANY TO BE IMPLIED.

31 W Congress Street
Savannah, GA 31401
+1 912 358 5600
naisavannah.com

For Lease
Office Space



17 PARK OF COMMERCE, SUITE 103

17 PARK OF COMMERCE BOULEVARD
SAVANNAH, GA 31405

17 Park of Commerce

Savannah, Chatham County, GA

Additional Features

- Entire Second Floor Available: 14,084sqft
- Six suites available for lease
- Situated in the Chatham Parkway Submarket
- Lease price: Call for details

Michael Shaw

+1 404 408 8843

mshaw@naisavannah.com



31 W Congress Street
Savannah, GA 31401
+1 912 358 5600

naisavannah.com