

For Sale Lease

**\$2.7 Million**

**13.27 Acres**

Land on Hwy 67

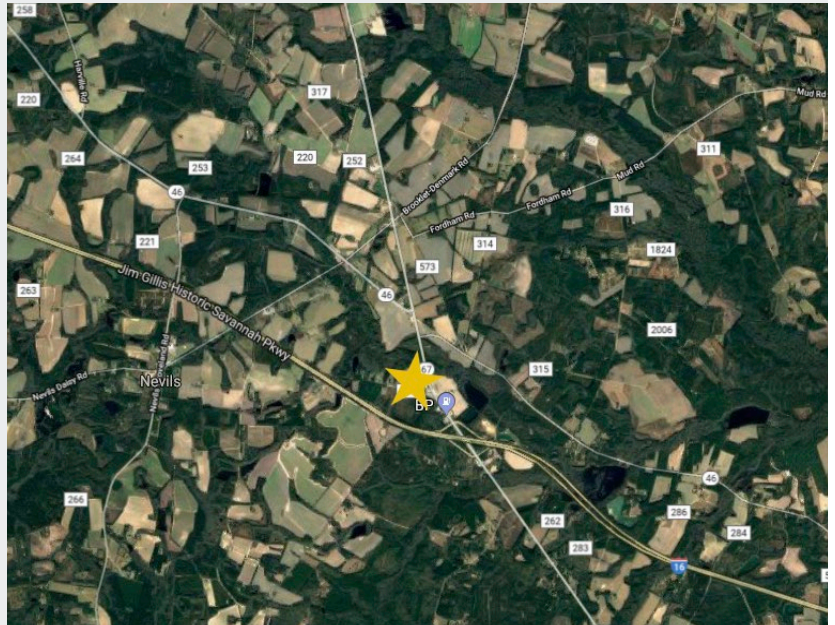


## GA-Highway 67

Brooklet, Georgia 30415

### Property Features

- Newly opened 4 lane highway immediately off of I-16
- Prime Commercial development location
- Zones HC
- 850' + Highway 67 Frontage
- 30,000+ VPD on I-16
- Located at a high-traffic intersection which provides access to Statesboro and surrounding areas.
- All utilities available at site



For more information:

**Jordan Kim**

+1 912 667 5887

[jkim@naisavannah.com](mailto:jkim@naisavannah.com)

**13.27 Acres of Land  
For Sale at \$2.7 Million**

NO WARRANTY OR REPRESENTATION, EXPRESS OR IMPLIED, IS MADE AS TO THE ACCURACY OF THE INFORMATION CONTAINED HEREIN, AND THE SAME IS SUBMITTED SUBJECT TO ERRORS, OMISSIONS, CHANGE OF PRICE, RENTAL OR OTHER CONDITIONS, PRIOR SALE, LEASE OR FINANCING, OR WITHDRAWAL WITHOUT NOTICE, AND OF ANY SPECIAL LISTING CONDITIONS IMPOSED BY OUR PRINCIPALS NO WARRANTIES OR REPRESENTATIONS ARE MADE AS TO THE CONDITION OF THE PROPERTY OR ANY HAZARDS CONTAINED THEREIN ARE ANY TO BE IMPLIED.

**31 W Congress St  
Savannah, Georgia 31401**

**+1 912 358 5600**

[naisavannah.com](http://naisavannah.com)

For Sale or Lease  
 GA-Highway 67  
 Brooklet, Georgia 30415



### Driving Distance to Major Cities from Property

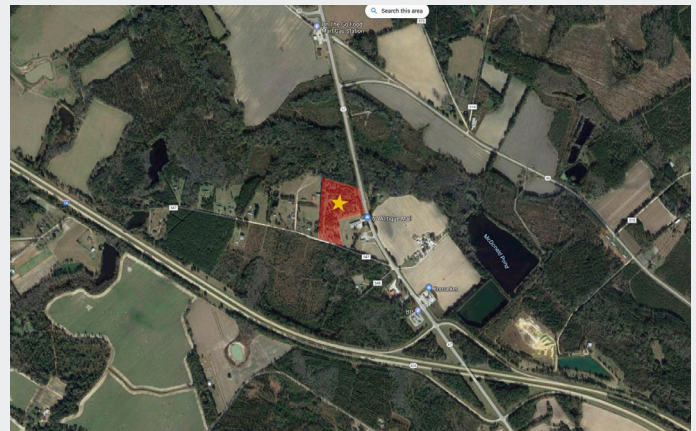
INTERSTATE 16	0.6 miles
Statesboro	13 miles
Claxton	18 miles
INTERSTATE 95	31 miles
Pooler	33 miles
Savannah	41 miles
Swainsboro	48 miles
Vidalia	50 miles

### Location Advantages

- Hwy 67 Land with road frontage
- Off of I-16 / Hwy 67 exit
- Georgia Southern University traffic

### Flexible Deal Structures

- Land Lease
- Sale
- Owner Financing



For more information:

**Jordan Kim**  
 +1 912 667 5887  
 jkim@naisavannah.com

**13.27 Acres of Land  
 For Sale at \$2.7 Million**