
145 West 67th Street AKA Tower 67

UPPER WEST SIDE
NEW YORK, NY



NEWMARK

Property Details

Location

Southeast corner of 68th Street and Amsterdam Avenue

Approximate Size

Ground Floor

Space A	3,884 SF
Space B	450 SF

Term

Space A	Long term
Space B	Long term

Possession

Space A	Immediate
Space B	Immediate

Site Status

Space A	Formerly 200 Amsterdam Sales Gallery
Space B	Formerly a Barbershop

Neighbors

Apple, Zara, Flywheel, UPS, Citibank, New York Kids Club, City MD, Northwell Health, Starbucks, Wells Fargo and HSBC

Comments

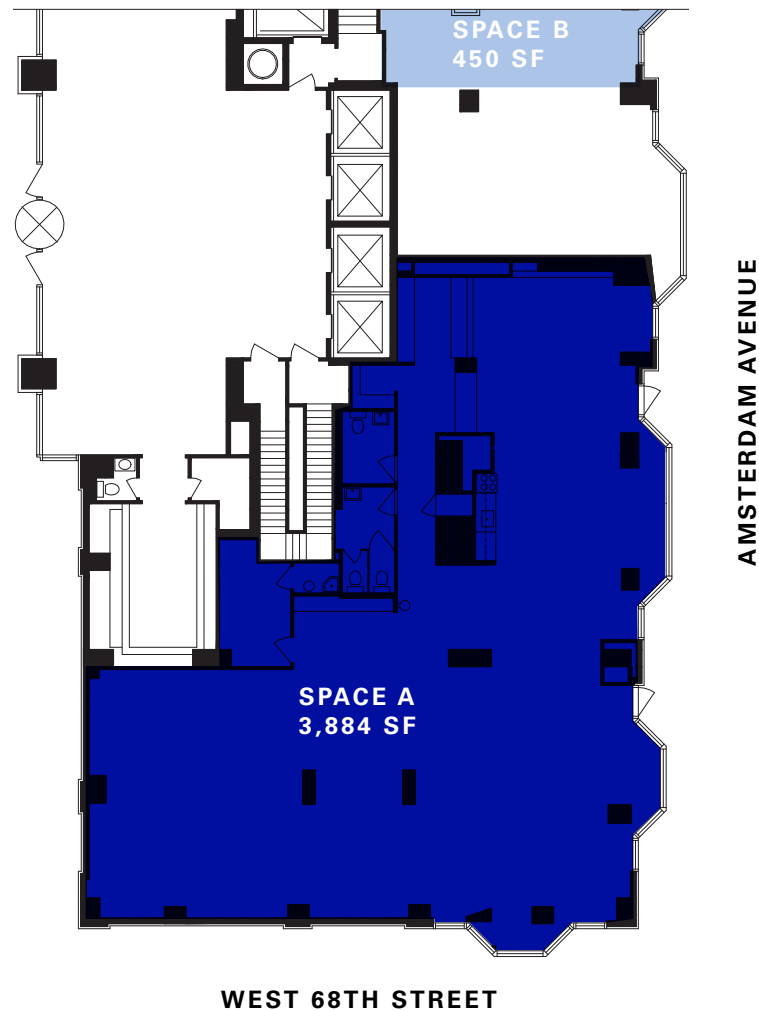
Great corner opportunity

At the base of a luxury 49-story high rise

Walking distance from Lincoln Center

Transportation via the 1 2 3 at 72nd Street and 1 2 trains at 66th Street

Ground Floor



Area Retail



CONTACT

Tyler King
 t 212-309-2822
 tyler.king@ngkf.com

Joshua Strauss
 t 212-331-0126
 joshua.strauss@ngkf.com

nrmk.com