



131 COOLIDGE STREET, HUDSON, MA

SUMMARY

AERIAL IMAGE

131 Coolidge Street is an office building in Hudson, MA.

The property is located very close to Exit 26 on Route 495 and almost directly across from the newly developed Highland Common development featuring Lowe's, Market Basket, BJ's Wholesale, Petsmart and Cabela's.



TO LEARN MORE CONTACT: O'BRIEN COMMERCIAL PROPERTIES, INC.
978-369-5500 | www.obriencommercial.com | joel@obriencommercial.com

Every effort has been made to furnish the most accurate information available on this property and should be deemed as such, however, all statements and conditions contained herein are subject to errors, omissions, prior sale and/or lease and/or removal from the market.

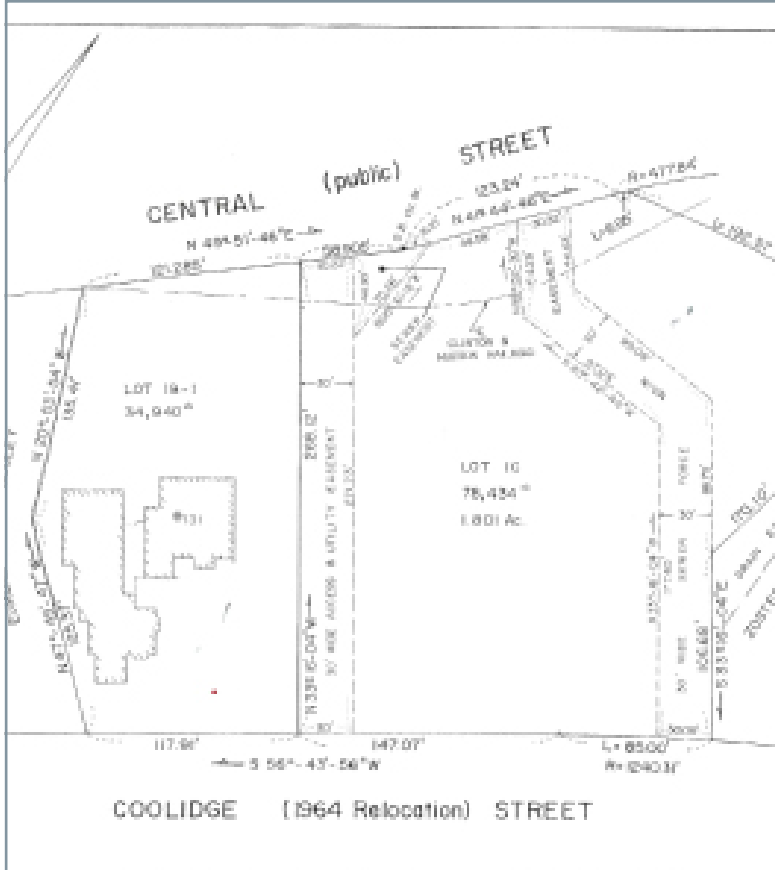
131 Coolidge Street, Hudson

SPECIFICATIONS

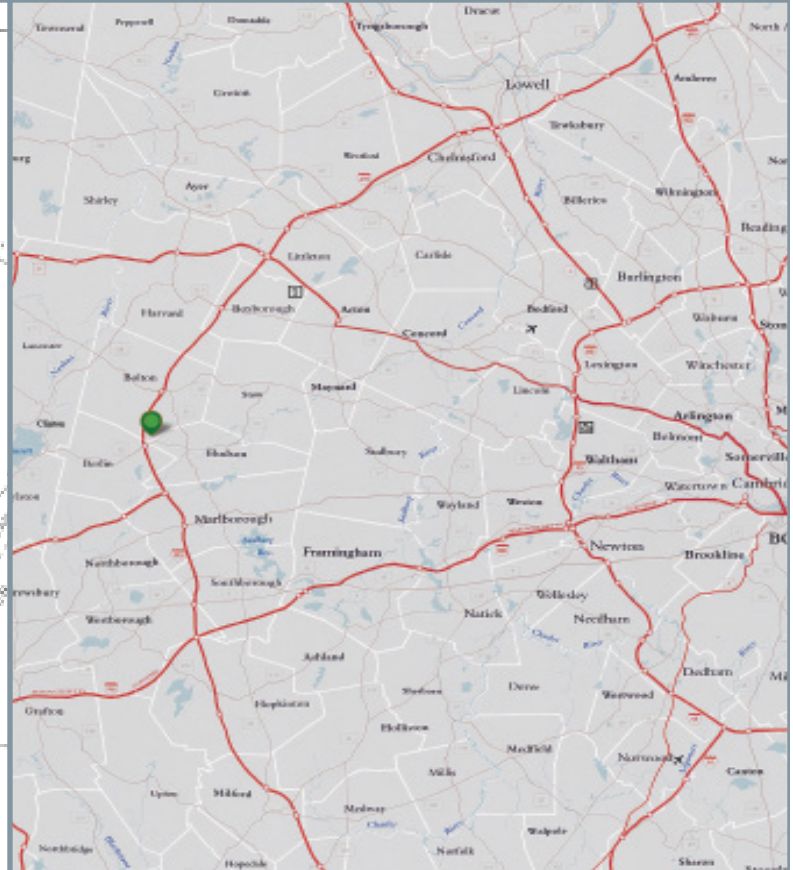
Year Built:	1982
Renovated:	1991
Total Size:	17,716 Square Feet
Land:	.80 Acres
Type:	Office
Parking:	46 Parking Spaces
Construction:	Wood Frame
Elevators:	One (1)
Stories:	Three (3)
Power:	120/208 Volts, 200 Amps



SITE PLAN



MAP



TO LEARN MORE CONTACT: O'BRIEN COMMERCIAL PROPERTIES, INC.
978-369-5500 | www.obriencommercial.com | joel@obriencommercial.com