

WAREHOUSE SPACE AVAILABLE



2417-2419 EVARTS STREET, NE | WASHINGTON, DC 20018



- Unit 2419-C comprising approximately 3,485 SF (2,785 SF warehouse + 700 SF office)
- 18'+ ceiling height
- Dock or ramp
- Available immediately
- PDR-1 Zoning – Light Industrial

For More Information
Please Contact:

TED KROOS | tkroos@amrcommercial.com | 301.961.9696 | AMRCommercial.com

2417-2419 EVARTS STREET, NE | WASHINGTON, DC 20018

Unit 2419-C

700 S.F. Office with 2 Baths



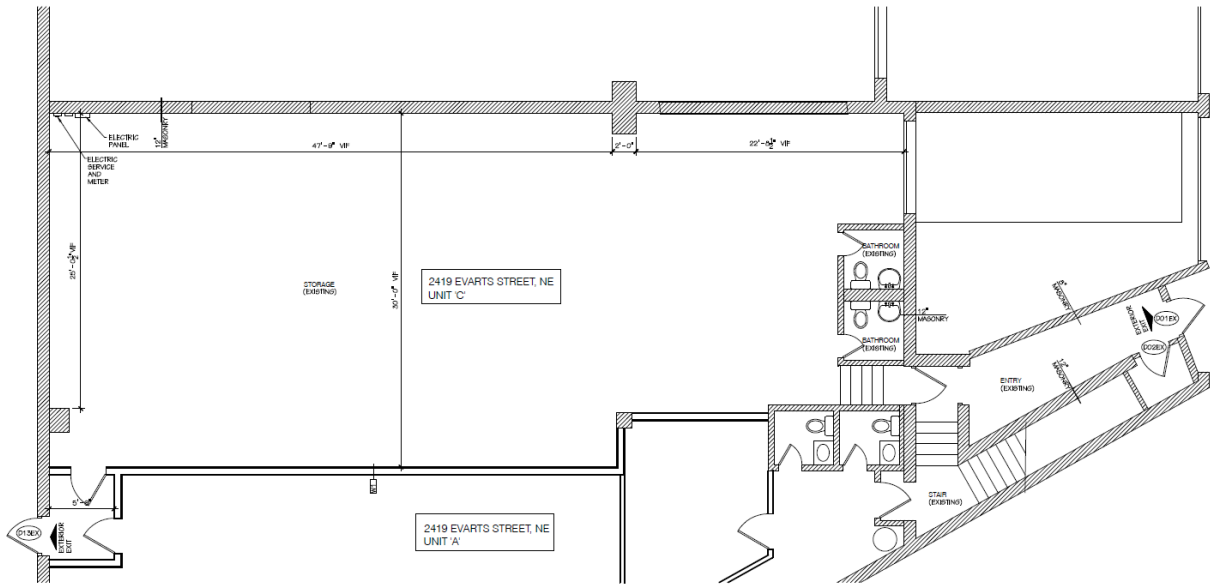
For More Information
Please Contact:

TED KROOS | tkroos@amrcommercial.com | 301.961.9696 | AMRCommercial.com

2417-2419 EVARTS STREET, NE | WASHINGTON, DC 20018

1st Floor Plan

Unit 2419-C
2,785 S.F. Warehouse + 700 S.F. Office



For More Information
Please Contact:

TED KROOS | tkroos@amrcommercial.com | 301.961.9696 | AMRCommercial.com