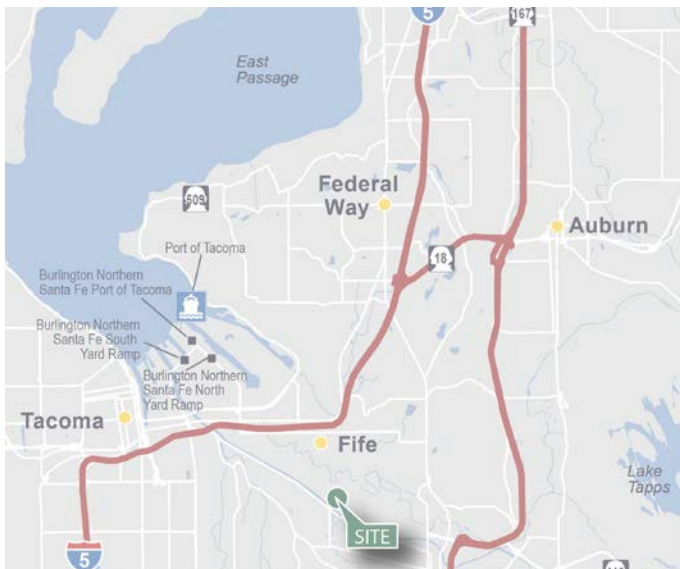


# 18,346 SF



## Prologis Park Fife 15

7217 45th Street Court East  
Fife, WA 98424



### FEATURES

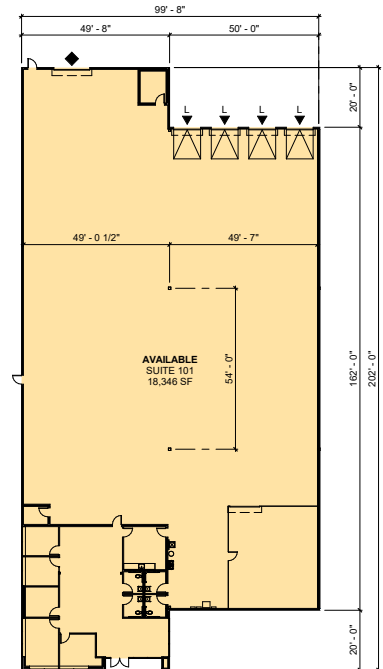
- 18,346 SF shell, 2,517 SF office
- Located 10 minutes from Port of Tacoma
- 4 DH loading doors
- 1 GL loading door
- 30' Clear height
- Three phase power, ESFR sprinkler system
- 120' truck court
- Zoned Industrial
- No B&O tax in Fife
- Call Broker for Lease Rates
- Call landlord for pricing on racking and lift trucks
- Available 08/01/2021

# 18,346 SF



**OVERALL SITE PLAN**  
1" = 45'-0"  
NORTH

PROPERTY LINE  
45TH ST. CT. E



**SUITE 101 FLOOR PLAN**  
1" = 25'-0"  
NORTH

**Kidder Mathews**

**Todd Clarke**  
todd.clarke@kidder.com  
ph +1 253 722 1422  
cell +1 253 381 5500  
1201 Pacific Avenue  
Suite 1400  
Tacoma, WA 98402

**Kidder Matthews**

**Laura Fox**  
laura.fox@kidder.com  
ph +1 253 722 1441  
cell +1 253 686 5888  
1201 Pacific Avenue  
Suite 1400  
Tacoma, WA 98402

**Kidder Matthews**

**Ty Clarke**  
ty.clarke@kidder.com  
ph +1 253 722 1419  
cell +1 253 720 2211  
1201 Pacific Avenue  
Suite 1400  
Tacoma, WA 98402

**Kidder Matthews**

**Hunter Clarke**  
hunter.clarke@kidder.com  
ph +1 253 722 1454  
cell +1 253 549 5517  
1201 Pacific Avenue  
Suite 1400  
Tacoma, WA 98402

