



PRIME PROPERTIES

## LOCAL RETAIL STRIP

## FOR SALE

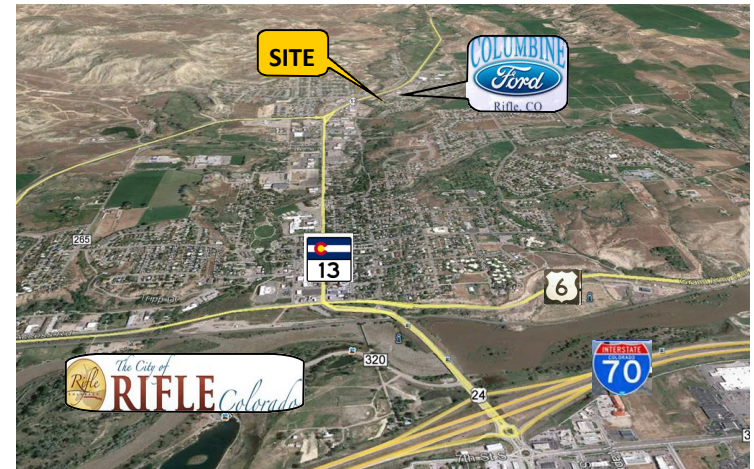
160 E. 26th Street, Rifle, CO 81650



FOR MORE DETAILS :

Paige Haderlie, [paigeh@thefleishercompany.com](mailto:paigeh@thefleishercompany.com) 970-618-4775  
Fleisher Land & Homes 970-625-1838

## PROPERTY LOCATION & DETAILS



**SF:** 6,000 - 4 to 6 Units  
**PRICE:** \$415,000  
**FEATURES:** - Off-Street, Paved Common Parking  
- Good Visibility and Easy Access  
- 100% Leased at Listing

**AREA DESCRIPTION:** The Hwy 13 Corridor has a high traffic volume with many retail and service store fronts.

Dale Beede, CCIM | [dbeede@cbcworldwide.com](mailto:dbeede@cbcworldwide.com)  
Coldwell Banker Commercial Prime Properties

Direct 970-244-6615 Main 970-243-7375  
Fax 970-245-2901 Cell 970-250-9500

2499 Hwy 6 & 50, Suite B  
Grand Junction, CO 81505

All information herein is from sources deemed reliable, however, broker makes no warranties, express or implied as to the accuracy of the information or to the suitability of this property for the investor.

CBCWorldwide.com

©2015 Coldwell Banker Real Estate LLC, dba Coldwell Banker Commercial Affiliates.

All Rights Reserved. Coldwell Banker Real Estate LLC, dba Coldwell Banker Commercial Affiliates fully supports the principles of the Equal Opportunity Act. Each Office is Independently Owned and Operated.

Coldwell Banker Commercial and the Coldwell Banker Commercial Logo are registered service marks owned by Coldwell Banker Real Estate LLC, dba Coldwell Banker Commercial Affiliates.

Grandjunctioncommercial.com

Coldwell Banker Commercial and the Coldwell Banker Commercial Logo are registered service marks licensed to Coldwell Banker Real Estate LLC. Each Office is Independently Owned and Operated.