

# 4510-16 NORTH POINT BLVD

4510-16 North Point Boulevard, Sparrows Point, MD 21219  
Baltimore County



## PROPERTY HIGHLIGHTS:

- **Premises:** ±14,500 RSF
- **Lease Rate:** \$11.75 Net
- **Land-Acres:** Gross - ±1.29 acres
- **Use:** Current use - office warehouse
- **Improvements:**
  - » Office 4,500 ± SF
  - » Metal warehouse building with 10,000 SF and 26' clear
- **Zoning:** ML-IM
- **Utilities:** On-site
- **Access to Site:** Excellent access
- **Access to Highways:** 5 minutes from I-695 and 10 minutes from I-95

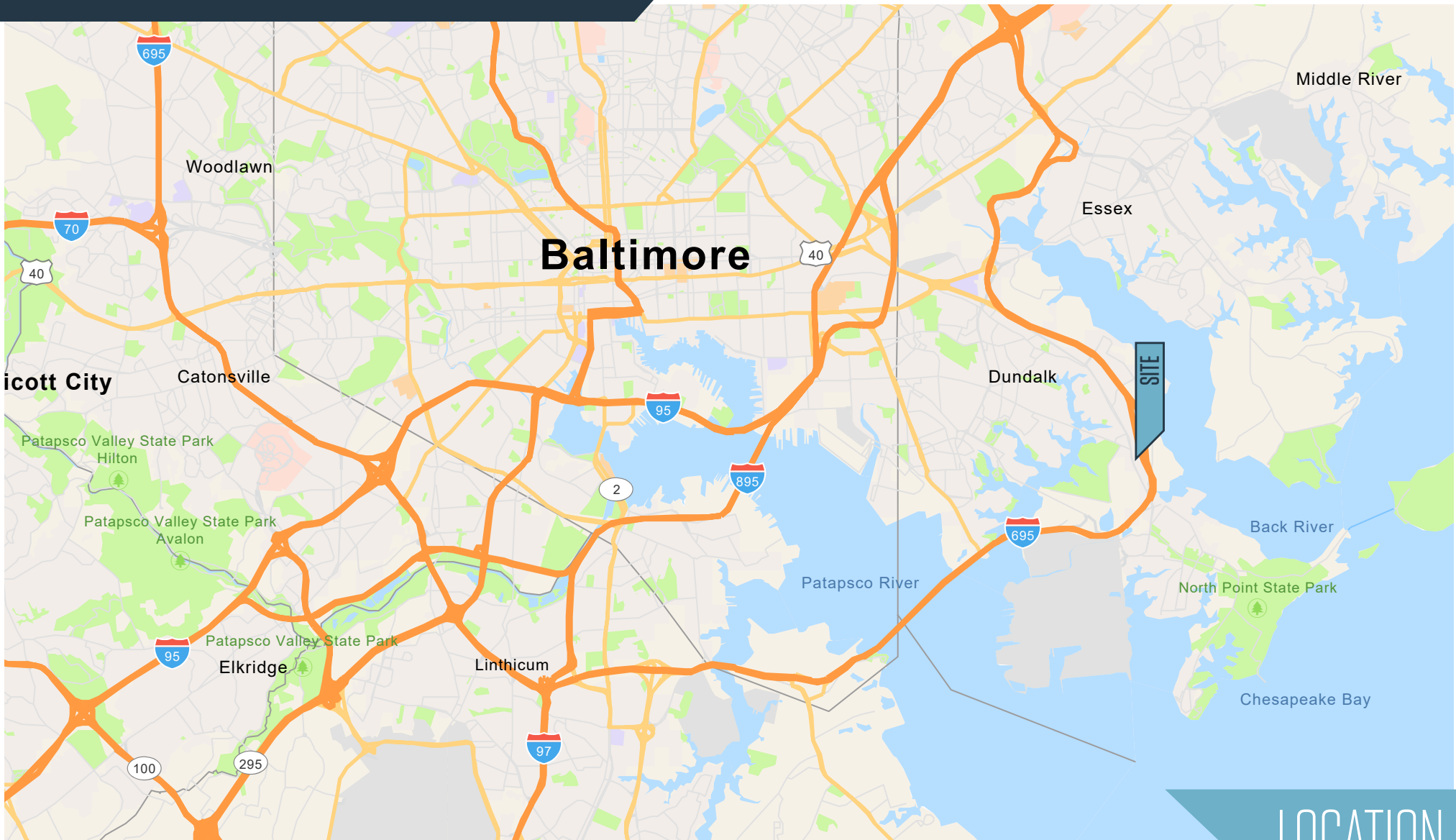
**Chris Wright**  
cwright@klnb.com  
443-914-2600

100 West Road, Suite 505  
Towson, MD 21204  
klnb.com

**NAI**klnb

# 4510-16 NORTH POINT BLVD

4510-16 North Point Boulevard, Sparrows Point, MD 21219  
Baltimore County



LOCATION

Chris Wright  
cwright@klnb.com  
443-914-2600

100 West Road, Suite 505  
Towson, MD 21204  
klnb.com



# 4510-16 NORTH POINT BLVD

4510-16 North Point Boulevard, Sparrows Point, MD 21219  
Baltimore County



CLOSE-UP AERIAL

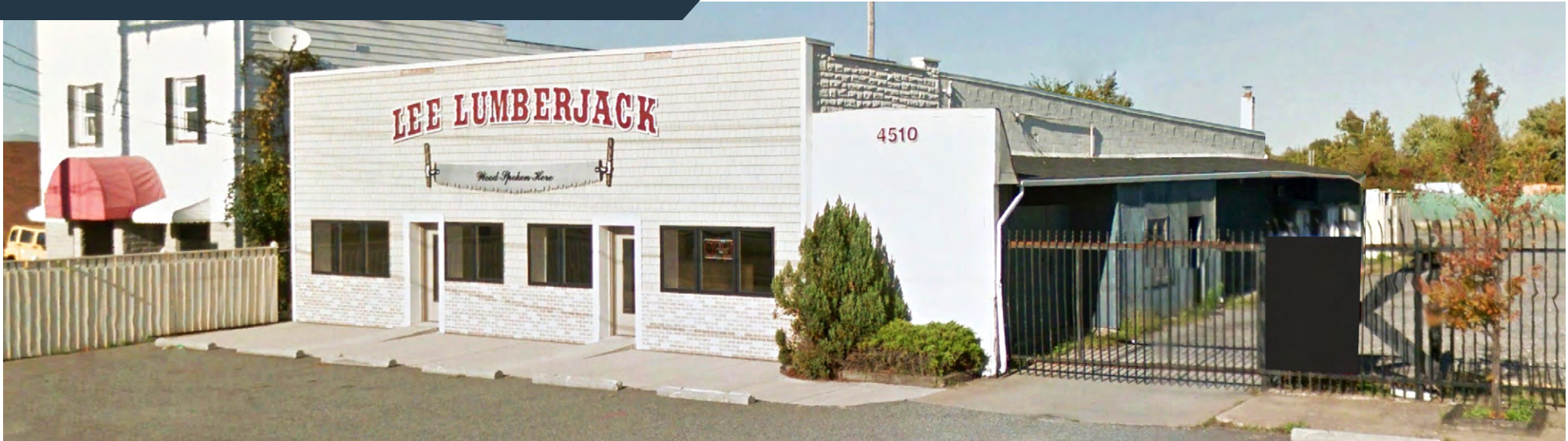
**Chris Wright**  
cwright@klnb.com  
443-914-2600

100 West Road, Suite 505  
Towson, MD 21204  
klnb.com

**NA**klnb

4510-16 NORTH POINT BLVD

4510-16 North Point Boulevard, Sparrows Point, MD 21219  
Baltimore County



PHOTOS

Chris Wright  
cwright@klnb.com  
443-914-2600

100 West Road, Suite 505  
Towson, MD 21204  
klnb.com

**NA**klnb

# 4510-16 NORTH POINT BLVD

4510-16 North Point Boulevard, Sparrows Point, MD 21219  
Baltimore County

[CLICK TO VIEW PROPERTY WEBSITE](#)

For More Information, Please Contact:

**Chris Wright**

[cwright@klnb.com](mailto:cwright@klnb.com)

443-914-2600

100 West Road, Suite 505

Baltimore, MD 21204

[klnb.com](http://klnb.com)

 [facebook.com/KLNB](https://facebook.com/KLNB)

 [@KLNBLLC](https://twitter.com/KLNBLLC)

 [linkedin.com/company/klnb](https://linkedin.com/company/klnb)

 [instagram.com/klnbllc](https://instagram.com/klnbllc)

While we have no reason to doubt the accuracy of any of the information supplied, we cannot, and do not, guarantee its accuracy. All information should be independently verified prior to a purchase or lease of the property. We are not responsible for errors, omissions, misuse, or misinterpretation of information contained herein and make no warranty of any kind, express or implied, with respect to the property or any other matters.

The logo for NAI klnb features the letters 'NAI' in a bold, dark blue font. The letter 'A' is stylized with a red diagonal stroke. To the right of 'NAI', the letters 'klnb' are in a lighter blue, lowercase font.