



Industrial Space for Lease

WIDMER PLACE 5
9753 WIDMER RD, LENEXA, KANSAS

Property Highlights

- 4,800 sf available
- 1 dock-high loading door
- Great interstate access to I-35
- Lease rate \$8.50/sf, industrial gross

For information, please contact:

Seamus M. McLaughlin

Associate Director

t 816-268-4223

smclaughlin@ngzimmer.com

Tommy Gentry

Associate Director

t 816-268-4249

tgentry@ngzimmer.com

nrmzimmer.com

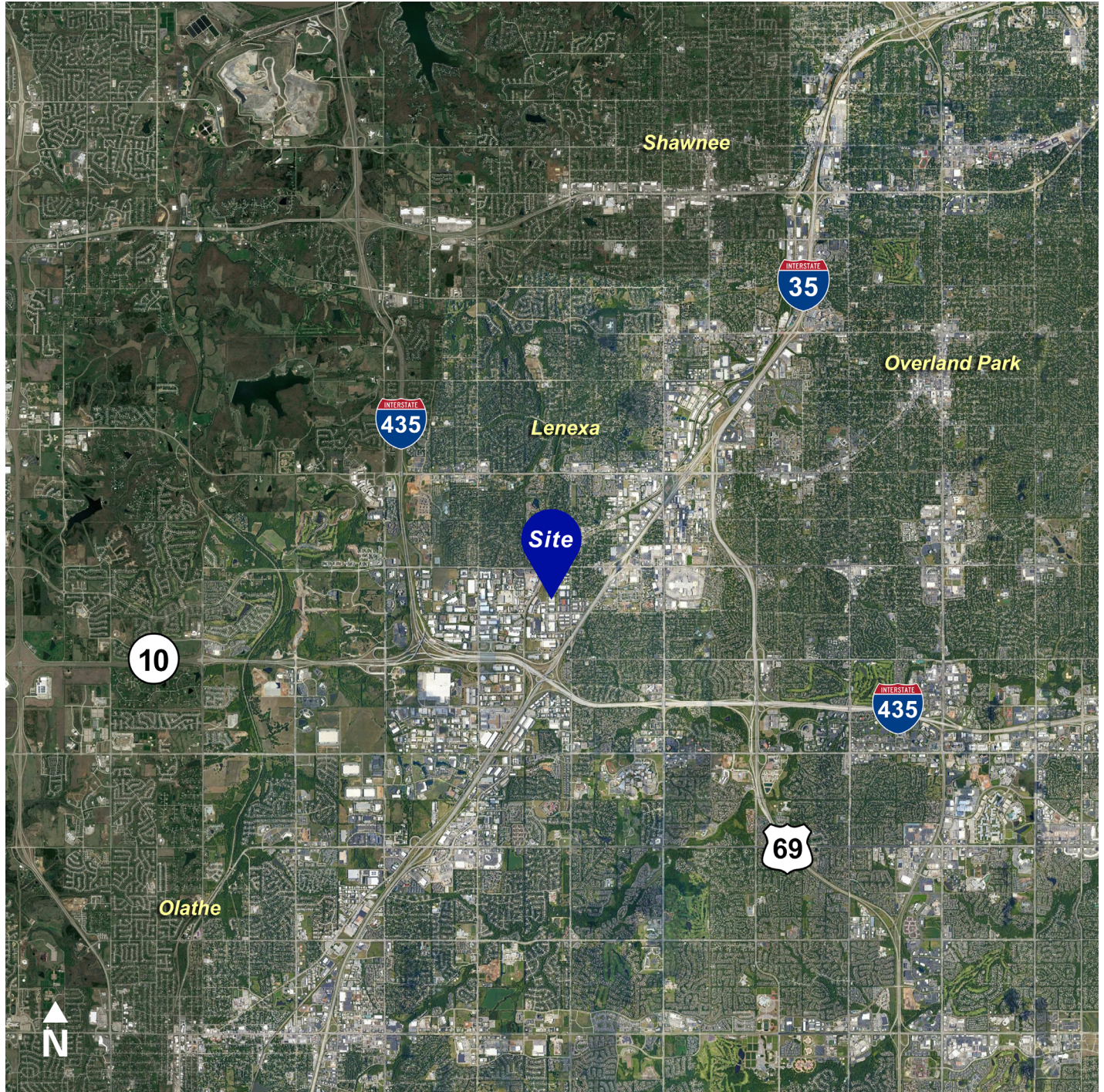
1220 Washington Street, Suite 300
Kansas City, MO 64105

NEWMARK
ZIMMER



The information contained herein has been obtained from sources deemed reliable but has not been verified and no guarantee, warranty or representation, either express or implied, is made with respect to such information. Terms of sale or lease and availability are subject to change or withdrawal without notice.

WIDMER PLACE 5, 9753 WIDMER ROAD, LENEXA, KANSAS



CONTACT

Seamus M. McLaughlin

Associate Director

t 816-268-4223

smclaughlin@ngzimmer.com

nrmrzimmer.com

Tommy Gentry

Associate Director

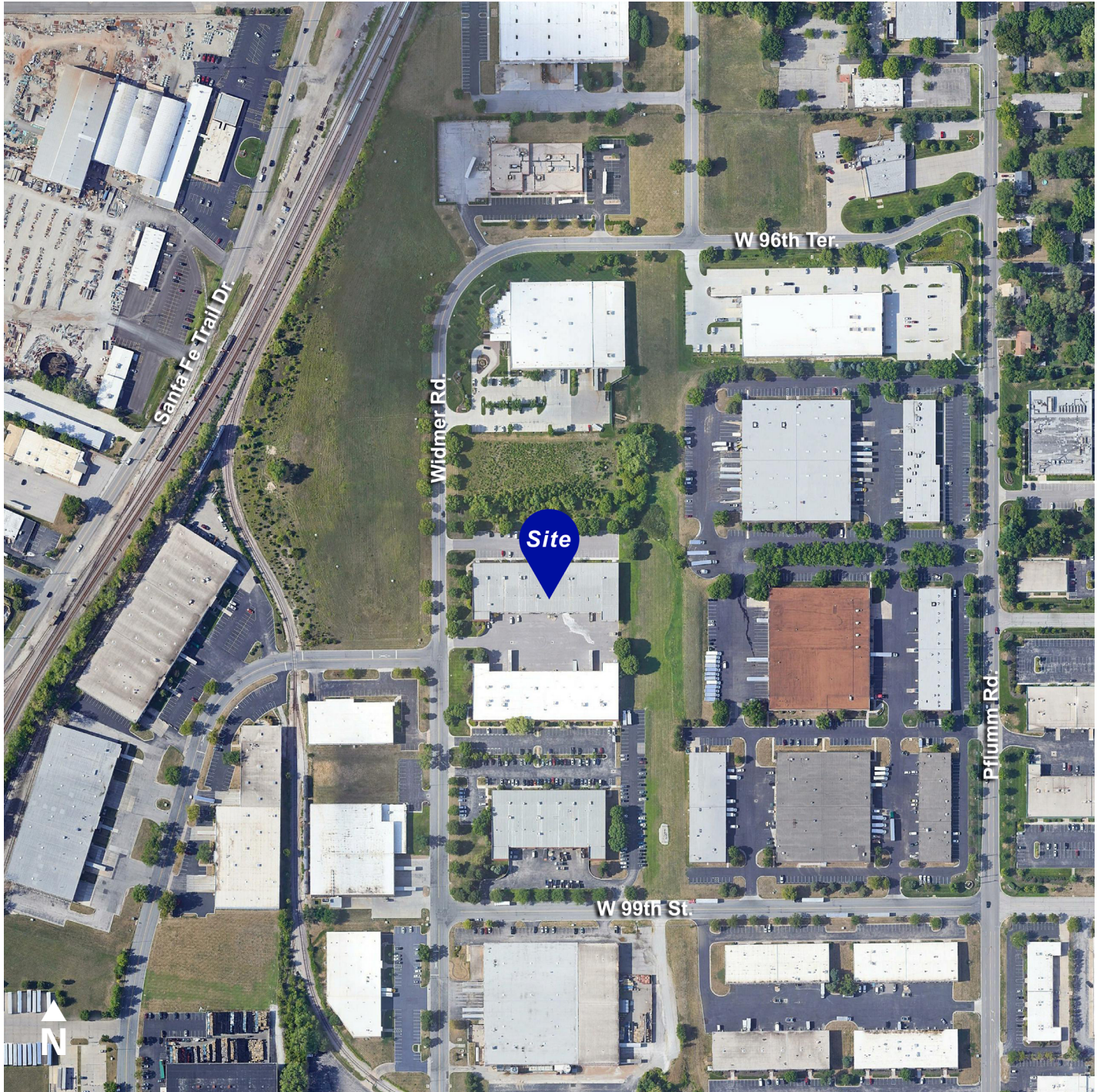
t 816-268-4249

tgentry@ngzimmer.com

NEWMARK

ZIMMER

WIDMER PLACE 5, 9753 WIDMER ROAD, LENEXA, KANSAS



CONTACT

Seamus M. McLaughlin

Associate Director

t 816-268-4223

smclaughlin@ngzimmer.com

nrmrzimmer.com

Tommy Gentry

Associate Director

t 816-268-4249

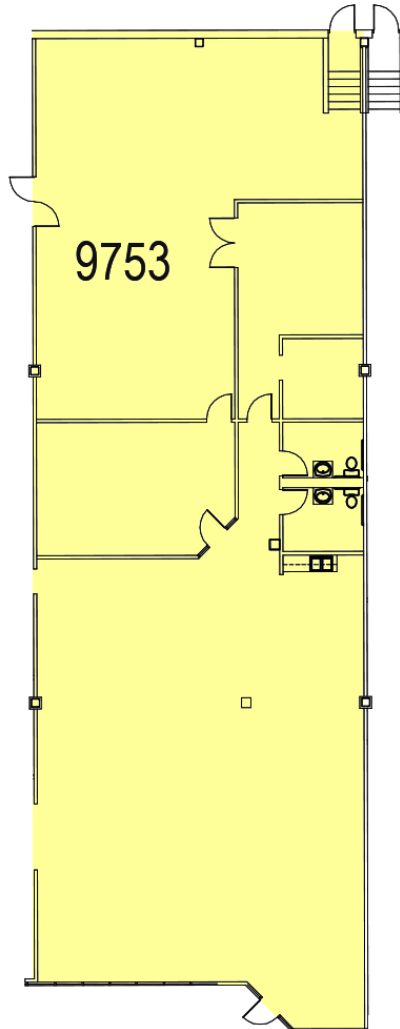
tgentry@ngzimmer.com

NEWMARK

ZIMMER

WIDMER PLACE 5, 9753 WIDMER ROAD, LENEXA, KANSAS

Floor Plan



CONTACT

Seamus M. McLaughlin

Associate Director

t 816-268-4223

smclaughlin@ngzimmer.com

nrmrkzimmer.com

Tommy Gentry

Associate Director

t 816-268-4249

tgentry@ngzimmer.com

NEWMARK

ZIMMER