

300

MISSION



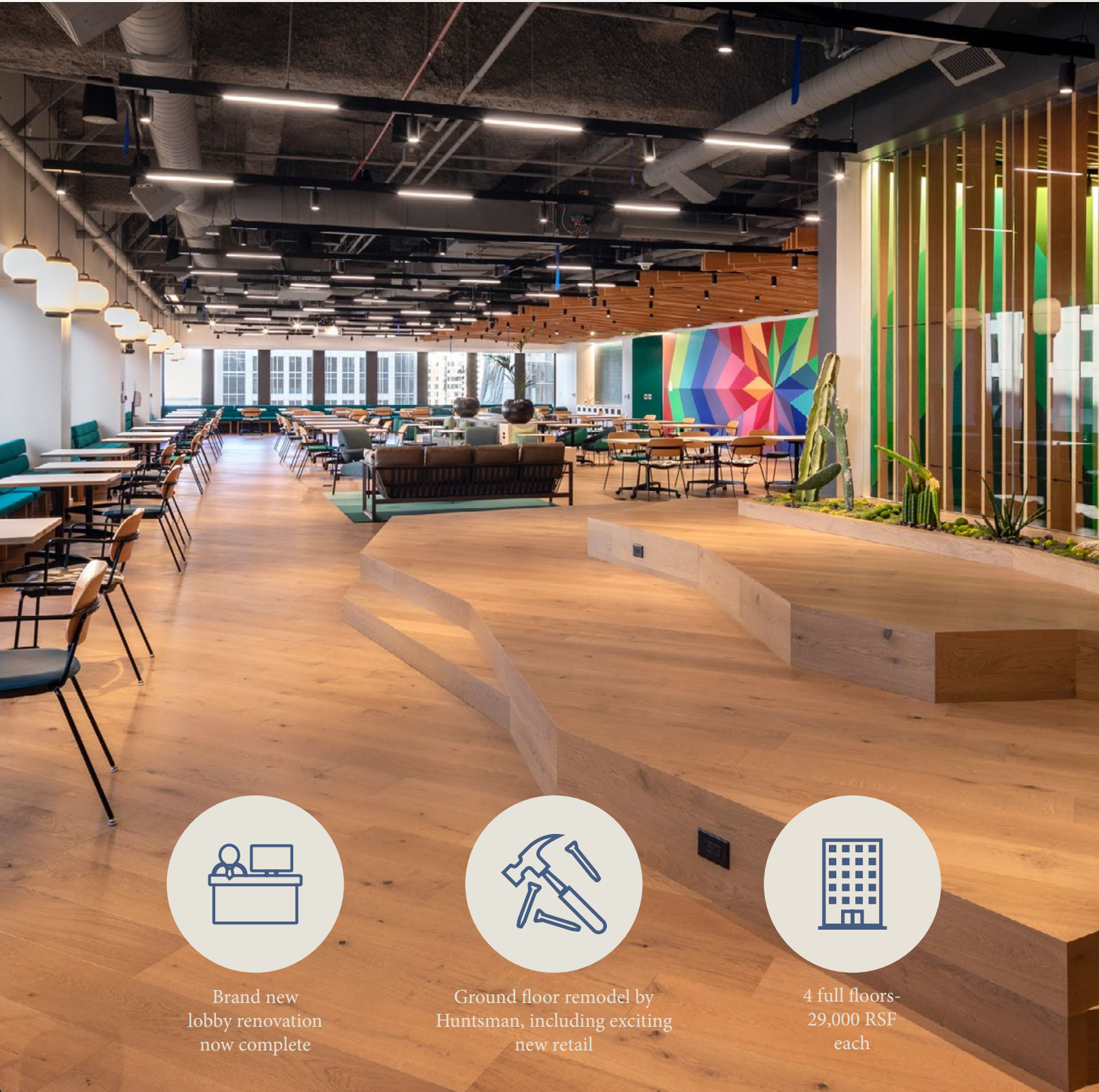
PARAMOUNT  
GROUP



Jones Lang LaSalle Brokerage, Inc. Real  
Estate. License #: 01856260

# Welcome to the new 300 Mission

# Retail just an elevator ride away



Where Luxury & Fitness  
Meet 45,000 RSF



Equinox

Mendocino Farms



Enjoy fresh  
ingredients you  
can feel good  
about



Brand new  
lobby renovation  
now complete



Ground floor remodel by  
Huntsman, including exciting  
new retail



4 full floors-  
29,000 RSF  
each

# Ideal Location



Located in the South Financial District



Adjacent to new Transbay Terminal & 5.4 acre park



Easy access to I-80 and Bay Bridge



Surrounded by some of San Francisco's hottest restaurants



A 1/2 block walk to BART & MUNI



1 block walk to Salesforce Park



3.5 block walk to the Ferry Building



# Local Amenities

Your new HQ in the center of it all.



 36 Restaurants

 5 Shopping Centers

 10 Hotels

# Property Features



668,197 RSF across 23 stories



Large +/- 29,000 RSF floor plates



Highly efficient 13% load factor



Brand new showers and lockers



Secured subterranean parking



On-site property management



On-site security 24/7



Landscaped outdoor plaza



# Availabilities

188,137 RSF Available

28,485 RSF

FLOOR 10

29,398 RSF

FLOOR 9

28,485 RSF

FLOOR 8

29,398 RSF

FLOOR 7

115,766 RSF  
Mid-Rise Block

29,398 RSF

FLOOR 5

28,488 RSF

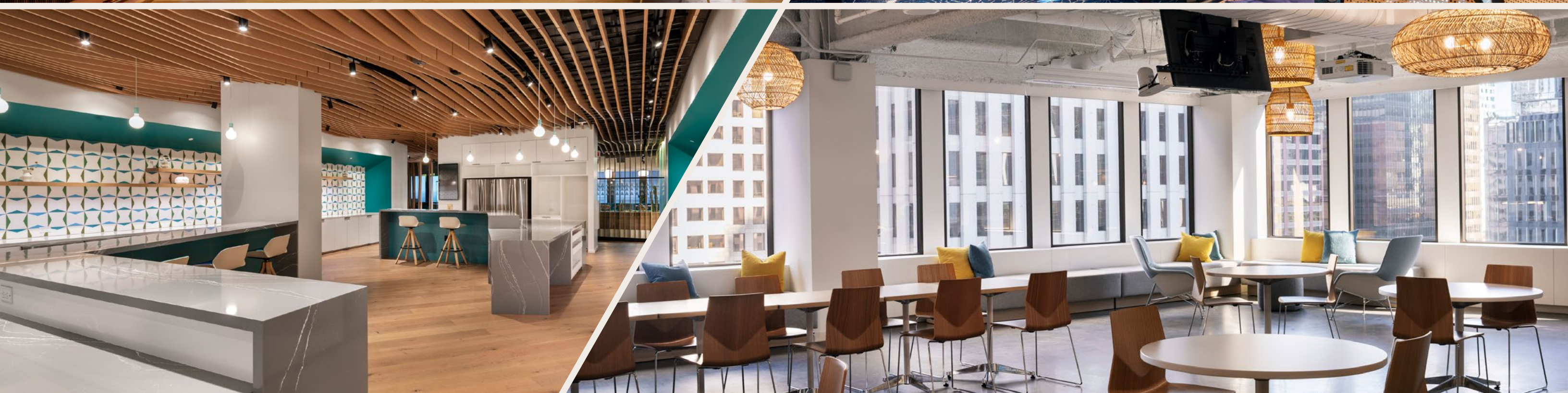
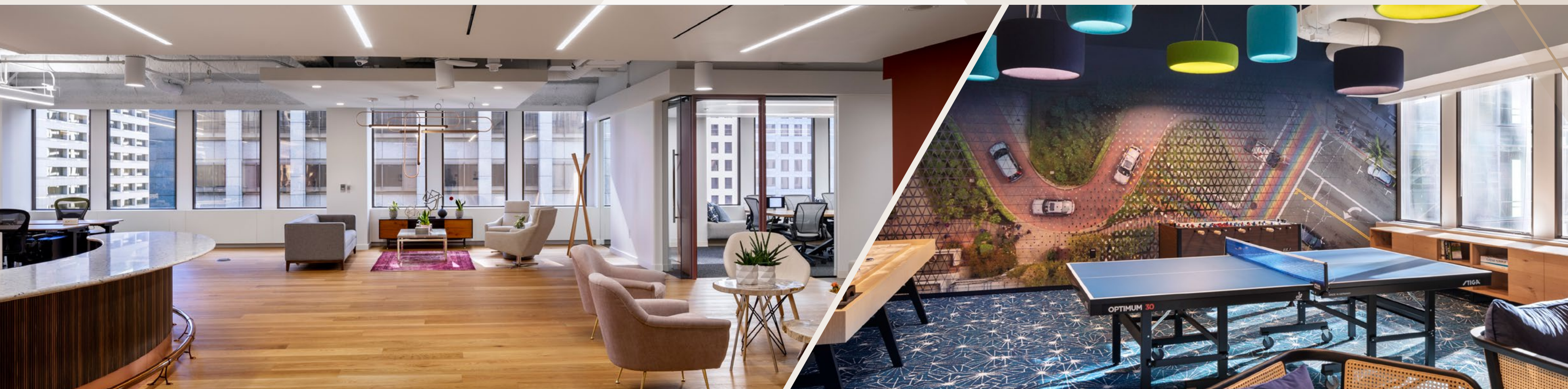
FLOOR 4

14,485 RSF

FLOOR 3

72,371 RSF  
Low-Rise Block

# Flexible layouts to suit a variety of tenants



# Brand new bike, shower and locker room



# SUITE 300

## 14,485 RSF

AS-BUILT PLAN  
HYPOTHETICAL FURNITURE



■ Conference Rooms ■ Open Desks ■ Lounges ■ Phone Rooms ■ Kitchen ■ Storage

- Available now
- 1 large boardroom
- Open space for ~140 workstations
- 9 medium meeting rooms
- Kitchenette
- 8 phone rooms
- Storage room

**Christopher Roeder**  
**Wes Powell**  
**Ted Davies**  
**Tom Doupe**  
**Teva Myatt**

415 395 4971  
415 395 4901  
415 395 4972  
415 395 4933  
415 395 7290

chris.roeder@jll.com  
wes.powell@jll.com  
ted.davies@jll.com  
tom.doupe@jll.com  
teva.myatt@jll.com

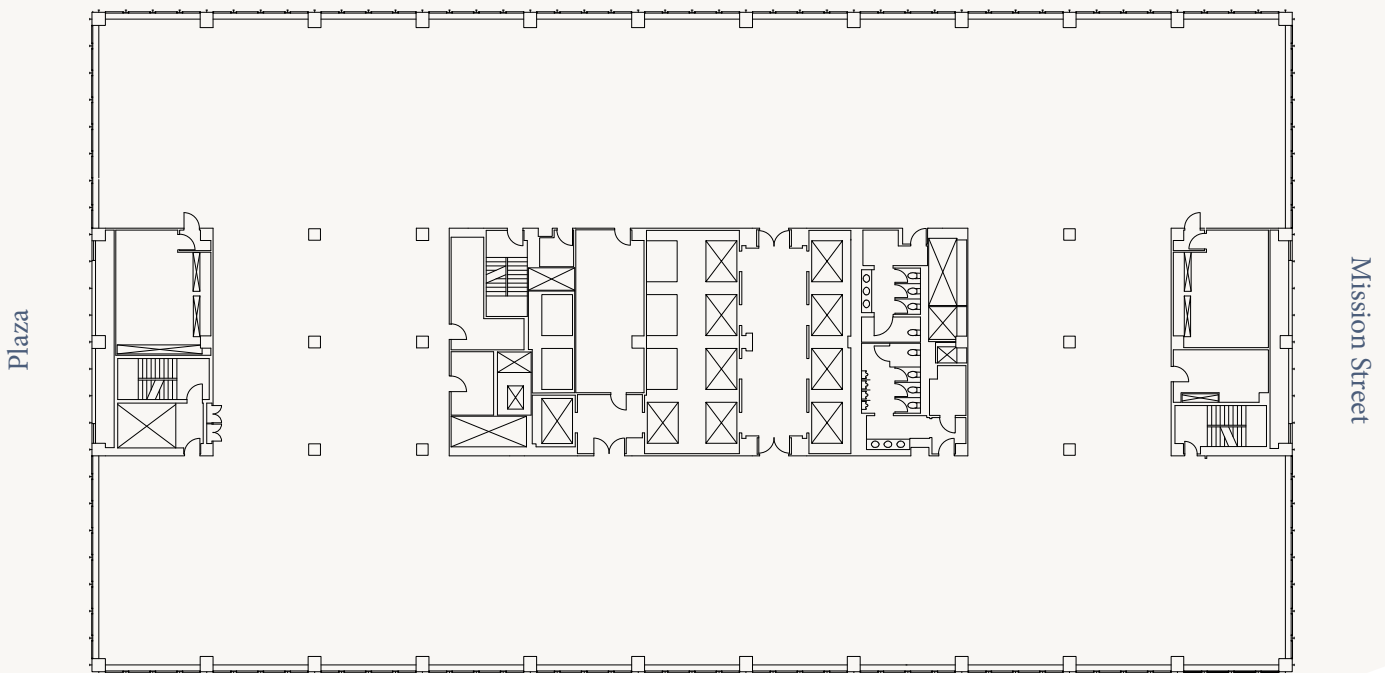
RE License # 01190523  
RE License # 01702003  
RE License # 01460185  
RE License # 01921218  
RE License # 02198058



# SUITE 400 28,488 RSF

## CORE SHELL PLAN

Beale Street



- Available now
- Excellent full floor opportunity
- Large, predominately column-free floor plate

**Christopher Roeder**  
**Wes Powell**  
**Ted Davies**  
**Tom Doupe**  
**Teva Myatt**

415 395 4971  
415 395 4901  
415 395 4972  
415 395 4933  
415 395 7290

chris.roeder@jll.com  
wes.powell@jll.com  
ted.davies@jll.com  
tom.doupe@jll.com  
teva.myatt@jll.com

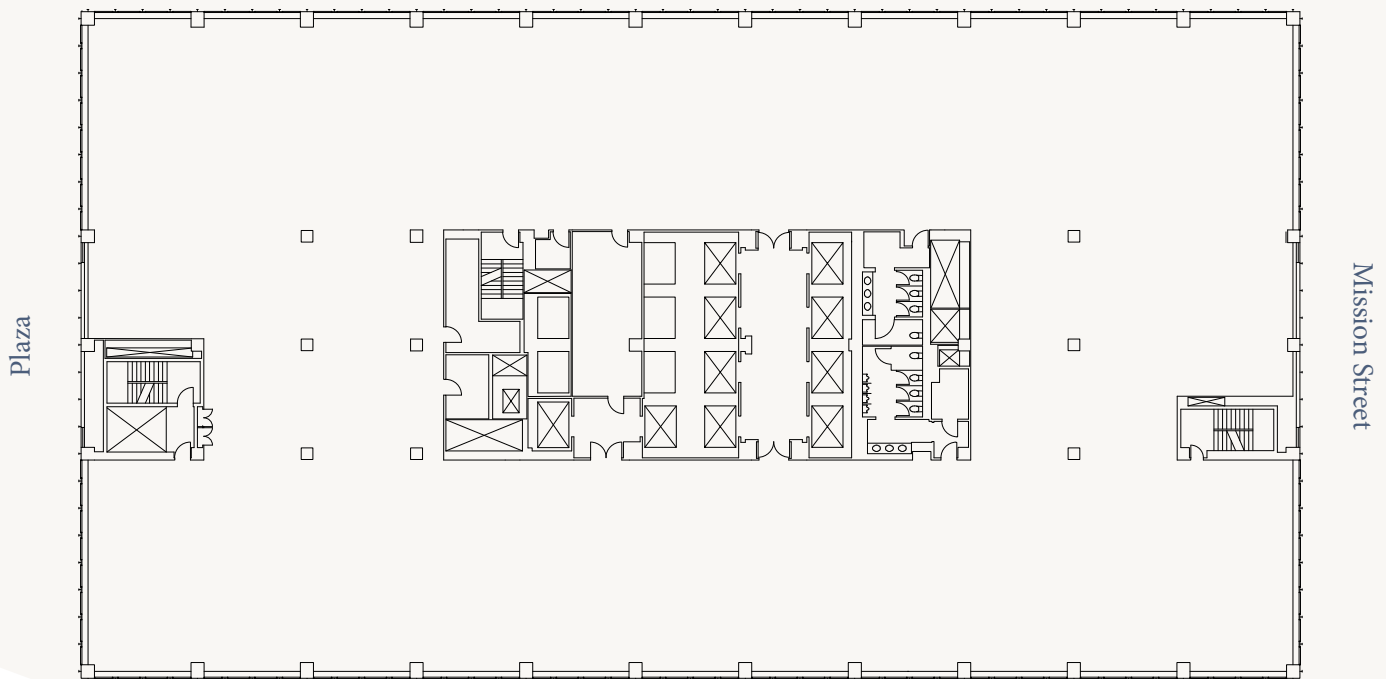
RE License # 01190523  
RE License # 01702003  
RE License # 01460185  
RE License # 01921218  
RE License # 02198058



# SUITE 500 29,398 RSF

## CORE SHELL PLAN

Beale Street



- Available now
- Excellent full floor opportunity
- Large, predominately column-free floor plate

**Christopher Roeder**  
**Wes Powell**  
**Ted Davies**  
**Tom Doupe**  
**Teva Myatt**

415 395 4971  
415 395 4901  
415 395 4972  
415 395 4933  
415 395 7290

chris.roeder@jll.com  
wes.powell@jll.com  
ted.davies@jll.com  
tom.doupe@jll.com  
teva.myatt@jll.com

RE License # 01190523  
RE License # 01702003  
RE License # 01460185  
RE License # 01921218  
RE License # 02198058

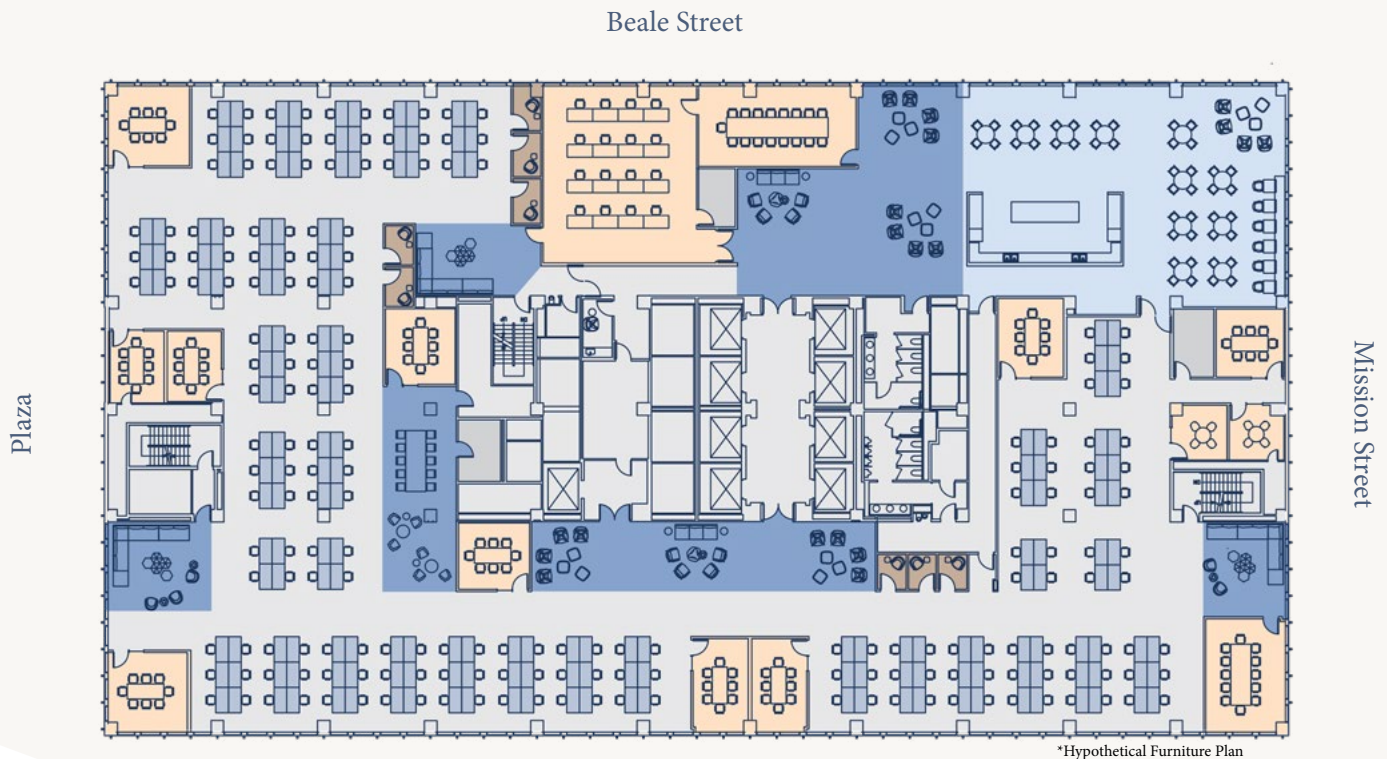


VIRTUAL  
TOUR

# SUITE 700

## 29,398 RSF

AS-BUILT PLAN  
HYPOTHETICAL FURNITURE



Conference Rooms Open Desks Lounges Phone Rooms Kitchen

- Available now
- Excellent full floor opportunity
- Large, predominately column-free floor plate
- High-end creative build-out with exposed ceilings and polished concrete rooms
- Large open gallery kitchen
- 2 all-hands team board rooms
- 11 medium to large conference rooms
- 8 phone rooms
- 12.2% load factor
- Can accommodate 212 desks
- 1 person per 150 RSF

**Christopher Roeder**  
**Wes Powell**  
**Ted Davies**  
**Tom Doupe**  
**Teva Myatt**

415 395 4971  
415 395 4901  
415 395 4972  
415 395 4933  
415 395 7290

chris.roeder@jll.com  
wes.powell@jll.com  
ted.davies@jll.com  
tom.doupe@jll.com  
teva.myatt@jll.com

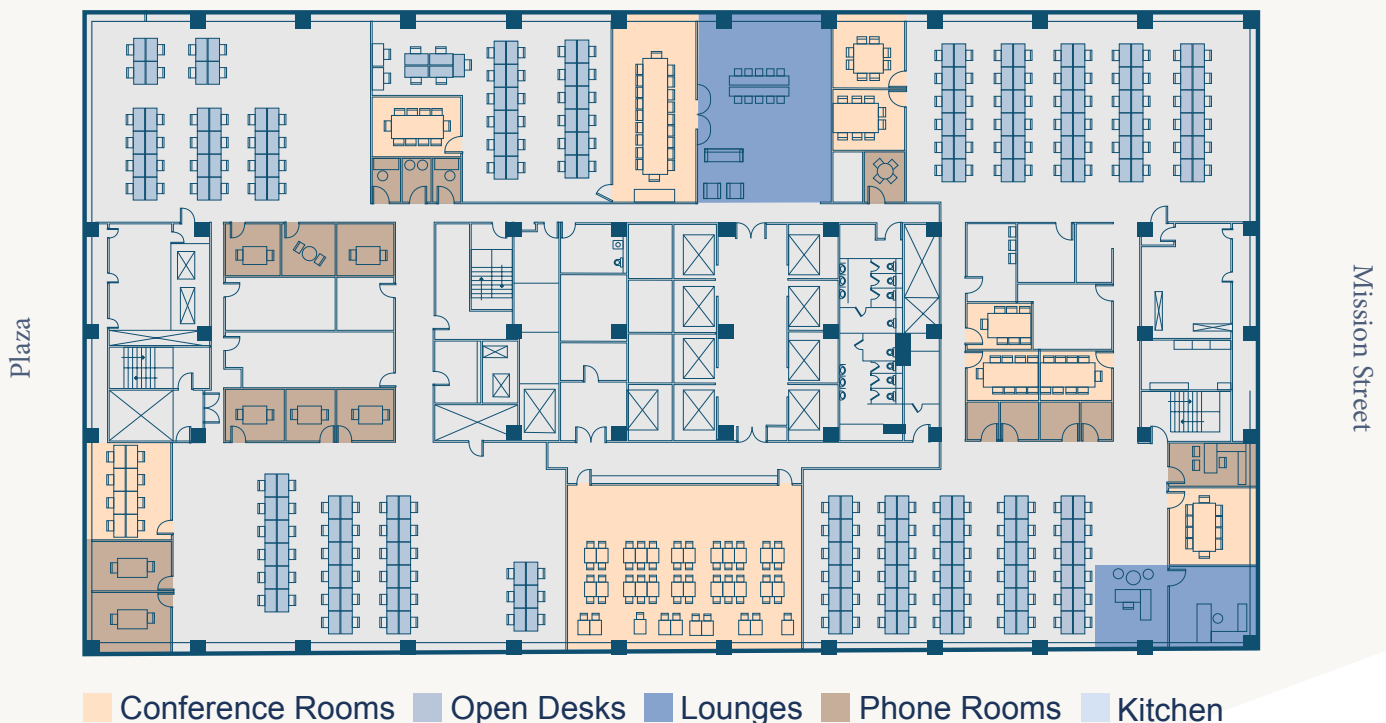
RE License # 01190523  
RE License # 01702003  
RE License # 01460185  
RE License # 01921218  
RE License # 02198058



# SUITE 800 28,485 RSF

## AS-BUILT PLAN

Beale Street



- Available 11/1/2025
- Furniture may be available
- Open space for ~240 workstations
- Highly creative floor
- Large all-hands kitchen
- 27 meeting rooms
- Mother's room

**Christopher Roeder**  
**Wes Powell**  
**Ted Davies**  
**Tom Doupe**  
**Teva Myatt**

415 395 4971  
415 395 4901  
415 395 4972  
415 395 4933  
415 395 7290

chris.roeder@jll.com  
wes.powell@jll.com  
ted.davies@jll.com  
tom.doupe@jll.com  
teva.myatt@jll.com

RE License # 01190523  
RE License # 01702003  
RE License # 01460185  
RE License # 01921218  
RE License # 02198058



# SUITE 900 29,398 RSF

FURNISHED PLUG-AND-PLAY



- Available 11/1/2025
- Furnished plug and play
- 148 workstations
- Large all-hands kitchen and training room
- 21 meeting rooms
- 14 phone booths
- 2 kitchenettes

**Christopher Roeder**  
**Wes Powell**  
**Ted Davies**  
**Tom Doupe**  
**Teva Myatt**

415 395 4971  
415 395 4901  
415 395 4972  
415 395 4933  
415 395 7290

chris.roeder@jll.com  
wes.powell@jll.com  
ted.davies@jll.com  
tom.doupe@jll.com  
teva.myatt@jll.com

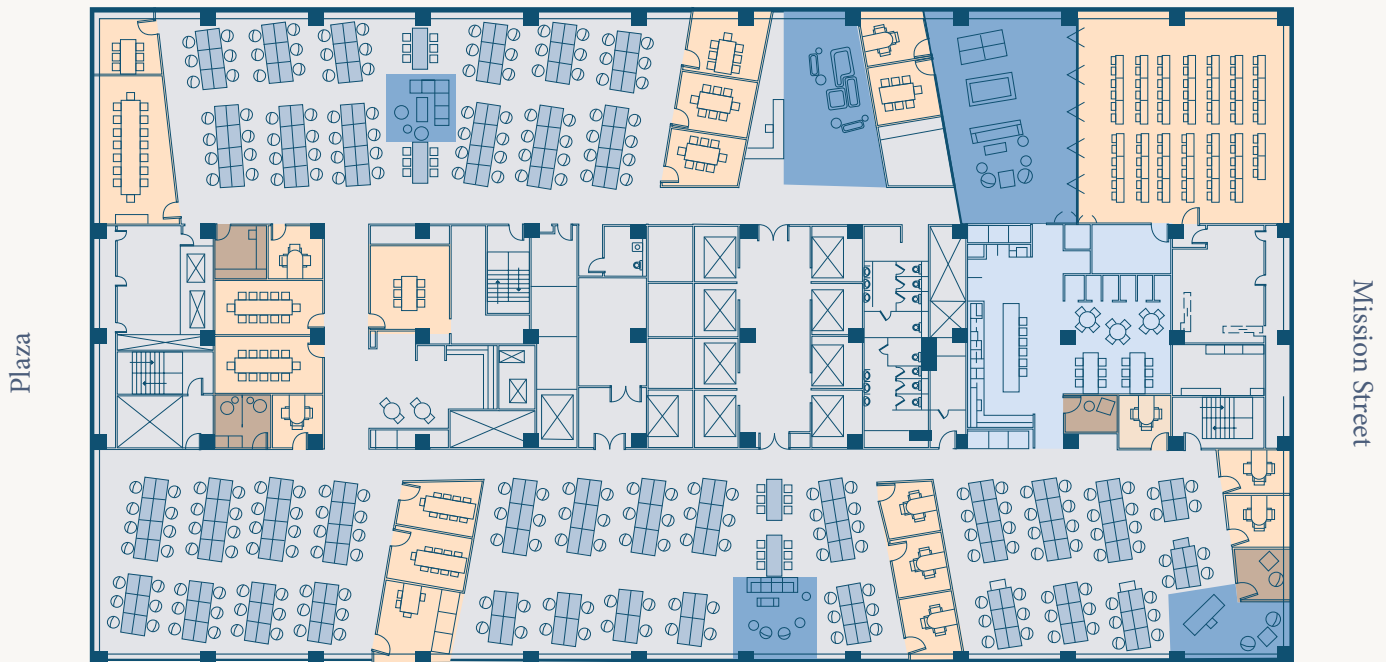
RE License # 01190523  
RE License # 01702003  
RE License # 01460185  
RE License # 01921218  
RE License # 02198058



# SUITE 1000 28,485 RSF

## AS-BUILT PLAN

Beale Street



Conference Rooms Open Desks Lounges Phone Rooms Kitchen

- Available 11/1/2025
- Fully furnished plug-and-play creative floor
- Large all-hands kitchen and training room
- 220 workstations
- Secondary coffee bar
- 22 meeting rooms
- Mother's room with plumbing

**Christopher Roeder**  
**Wes Powell**  
**Ted Davies**  
**Tom Doupe**  
**Teva Myatt**

415 395 4971  
415 395 4901  
415 395 4972  
415 395 4933  
415 395 7290

chris.roeder@jll.com  
wes.powell@jll.com  
ted.davies@jll.com  
tom.doupe@jll.com  
teva.myatt@jll.com

RE License # 01190523  
RE License # 01702003  
RE License # 01460185  
RE License # 01921218  
RE License # 02198058





**300**  
MISSION



**Christopher Roeder**  
+1 415 395 4971  
chris.roeder@jll.com  
RE License # 01190523

**Wes Powell**  
+1 415 395 4901  
wes.powell@jll.com  
RE License # 01702003

**Ted Davies**  
415 395 4972  
ted.davies@jll.com  
RE License # 01460185

**Tom Doupe**  
415 395 4933  
tom.doupe@jll.com  
RE License # 01921218

**Teva Myatt**  
415 395 7290  
teva.myatt@jll.com  
RE License # 02198058