

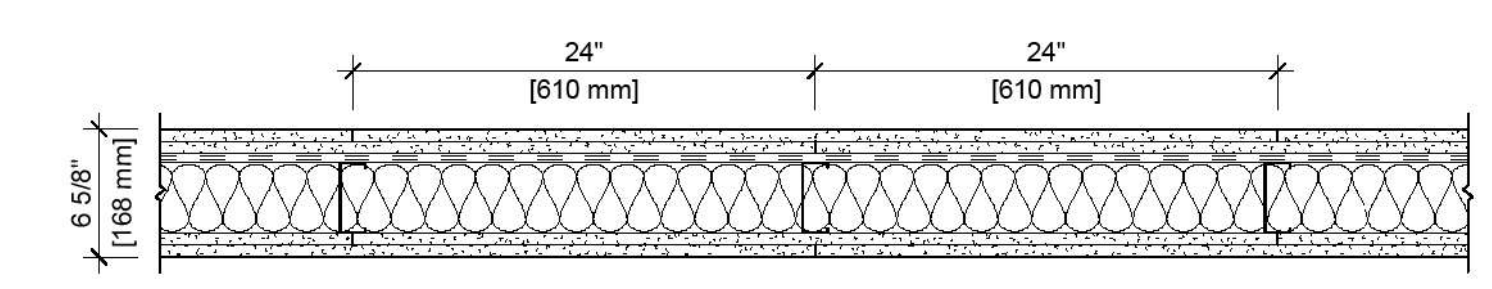
A-2 Seating	963 NSF / 15 = 64 OCCUPANT
A-2 Kitchen	420 NSF / 200 = 2 OCCUPANT
A-3	2,034 NSF / 50 = 40 OCCUPANTS
B	3,321 GSF / 150 = 22 OCCUPANTS
TOTAL = 128 OCCUPANTS	
FE	FIRE EXTINGUISHER

PARTITION NOTES

- REFER TO DIMENSION PLAN SERIES FOR WALL TYPES.
- REFER TO SCHEDULES & DETAILS FOR FINISHES. WALL TYPES REVER TO BASE WALL ONLY.
- "LINE OF STRUCTURE" AS SHOWN AT THE HEAD CONDITIONS OF EACH WALL TYPE IS DIAGRAMMATIC ONLY AND DOES NOT INDICATE THE EXACT CONSTRUCTION CONDITION. RATED WALLS ARE TO TERMINATE AT STRUCTURAL MEMBERS WITH A FIRE RESISTANT RATING. WHERE REQ'D APPROPRIATE FRAMING AND GYP BOARD IS TO BE INSTALLED AND OFFSET AROUND STRUCTURAL MEMBERS OR OTHER OBSTRUCTIONS SUCH AS PIPING OR DUCTWORK, TO MAINTAIN THE FIRE RESISTANCE RATING. NON-RATED WALLS THAT CONTINUE TO STRUCTURE ARE TO TERMINATE AT PROPER LOCATIONS TO MAINTAIN THE INTENT OF THE CONTINUOUS PLANE OF ONE LAYER OF GYP BOARD AS A NOISE, SMOKE OR OTHER TYPE OF BARRIER.
- ALL GYP BOARD SHALL BE 5/8", U.N.O.
- ALL WALL ASSEMBLIES TO BE FILLED W/ SOUND ATTENUATION BATTS, U.N.O.
- U.N.O. ALL WALLS TO BE LEVEL 4 FINISH
- ALL RATED WALLS SHALL BE CONSTRUCTED FIRST. SECONDARY WALLS TO ABUTT, BUT NOT PENETRATION RATED WALLS.
- APPROPRIATE SUBMITTAL INFORMATION MUST BE PROVIDED TO SUBSTANTIATE THAT THE MATERIALS AND ASSEMBLY USED BY THE CONTRACTOR HAVE BEEN TESTED BY A RECOGNIZED TESTING AGENCY TO MEET THE FIRE RESISTANCE RATING SCHEDULED ON THESE WALL TYPES.
- FIRESTOPPING TO BE PROVIDED AT PENETRATIONS THROUGH RATED WALLS AS SPECIFIED.
- ALL GYPSUM WALL BOARD MUST BE MOISTURE RESISTANT AT THE FOLLOWING LOCATIONS:
 - TOILET ROOMS
 - WET WALLS
 - SHOWERS
 - JANITOR'S CLOSETS
- SOUND ATTENUATION BLANKETS/BATTS SHALL EXTEND THE FULL HEIGHT OF THE WALLS, U.N.O.
- REFER TO INTERIOR DETAILS FOR ADDITIONAL INFORMATION.
- SUPPORT INSULATION WITH CHICKEN WIRE IN PARTITIONS WITHOUT GYP BOARD ON BOTH SIDES TO STRUCTURE.
- MAINTAIN 1/2" SPACE BETWEEN FLOOR SLAB AND BOTTOM OF GYP BOARD ON ALL WALLS.

DESIGN NO. UL U419

FIRE RATING:	2 HOURS
STC RATING:	57
SOUND TEST:	USG-161006
SYSTEM THICKNESS:	6.5" (168 MM)
LOCATION:	INTERIOR
FRAMING TYPE:	STEEL STUD (NONLOAD-BEARING)



ASSEMBLY REQUIREMENTS:

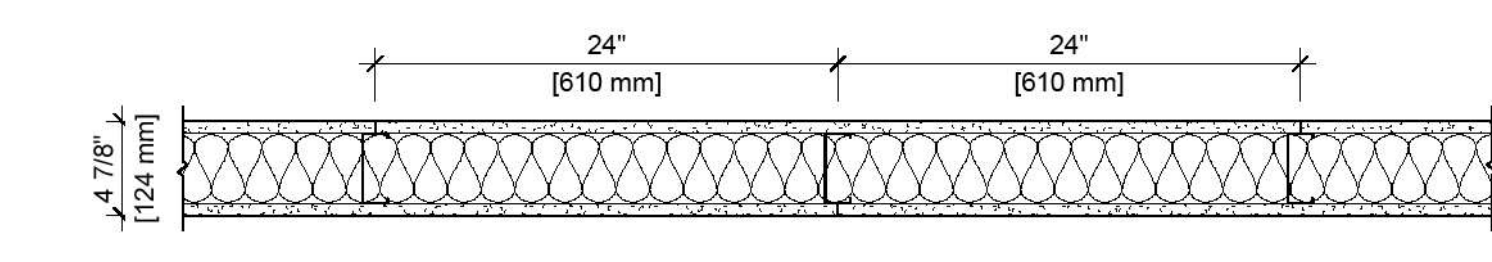
GYPSUM PANELS:	TWO LAYERS 5/8" (15.9 MM) SHEETROCK® ECOSMART GYPSUM PANEL (UL TYPE ULX™)
RESILIENT CHANNEL:	1 1/2" (38 MM) RESILIENT CHANNEL, 25 GA. (0.018"), 24" (610 MM) O.C.
STEEL STUDS:	3-5/8" (92 MM) STEEL STUDS, E225 (0.015"), 24" (610 MM) O.C.
INSULATION:	3-1/2" (89 MM) FIBERGLASS INSULATION
GYPSUM PANELS:	TWO LAYERS 5/8" (15.9 MM) SHEETROCK® ECOSMART GYPSUM PANEL (UL TYPE ULX™)

2 HR RATED WALL

scale: 1/2" = 1'-0"

DESIGN NO. UL U419

FIRE RATING:	1 HOUR
STC RATING:	48
SOUND TEST:	USG-190434
SYSTEM THICKNESS:	4.78" (124 MM)
LOCATION:	INTERIOR
FRAMING TYPE:	STEEL STUD (NONLOAD-BEARING)



ASSEMBLY REQUIREMENTS:

GYPSUM PANELS:	ONE LAYER 5/8" (15.9 MM) SHEETROCK® ECOSMART GYPSUM PANEL (UL TYPE ULX™)
STEEL STUDS:	3-5/8" (92 MM) STEEL STUDS, E225 (0.015"), 24" (610 MM) O.C.
INSULATION:	3-1/2" (89 MM) FIBERGLASS INSULATION
GYPSUM PANELS:	ONE LAYER 5/8" (15.9 MM) SHEETROCK® ECOSMART GYPSUM PANEL (UL TYPE ULX™)

1 MAIN LEVEL - CODE ANALYSIS

scale: 3/16" = 1'-0"

3 1 HR RATED WALL

scale: 1/2" = 1'-0"

LD

LANDSCAPE ARCHITECTURE//
ARCHITECTURE//
CONSTRUCTION MANAGEMENT

511 W. 200 S. SUITE 125
S.L.C. UTAH 84101
OFFICE: 801.521.2370

WWW.LANDFORMDESIGNGROUP.COM

ALL RIGHTS RESERVED. LANDFORM DESIGN GROUP

These documents are protected under the United States (US) copyright act. It is an unlawful practice or illegal distribution to reproduce, publish, or disseminate any part of these documents without the prior written consent of Landform Design Group. This design includes relationships based on data obtained from other parties and has been created based on information provided by the client. Landform Design Group is not responsible for the accuracy or completeness of the information provided. Any modification of the information contained herein will be subject to approval of Landform Design Group.

STAMP

PROJECT: **HARRISON HIVE TI**
3293 HARRISON BLVD
OGDEN UT, 84403

DATA
ISSUE DATE: 8/10/2025
PROJECT NUMBER: 2025.03.A
PROJECT STATUS: CONSTRUCTION
DOCUMENTS

REVISIONS

**MAIN LEVEL
LIFE SAFETY
PLAN**

**SHEET
A0.4**

LANDFORM DESIGN GROUP