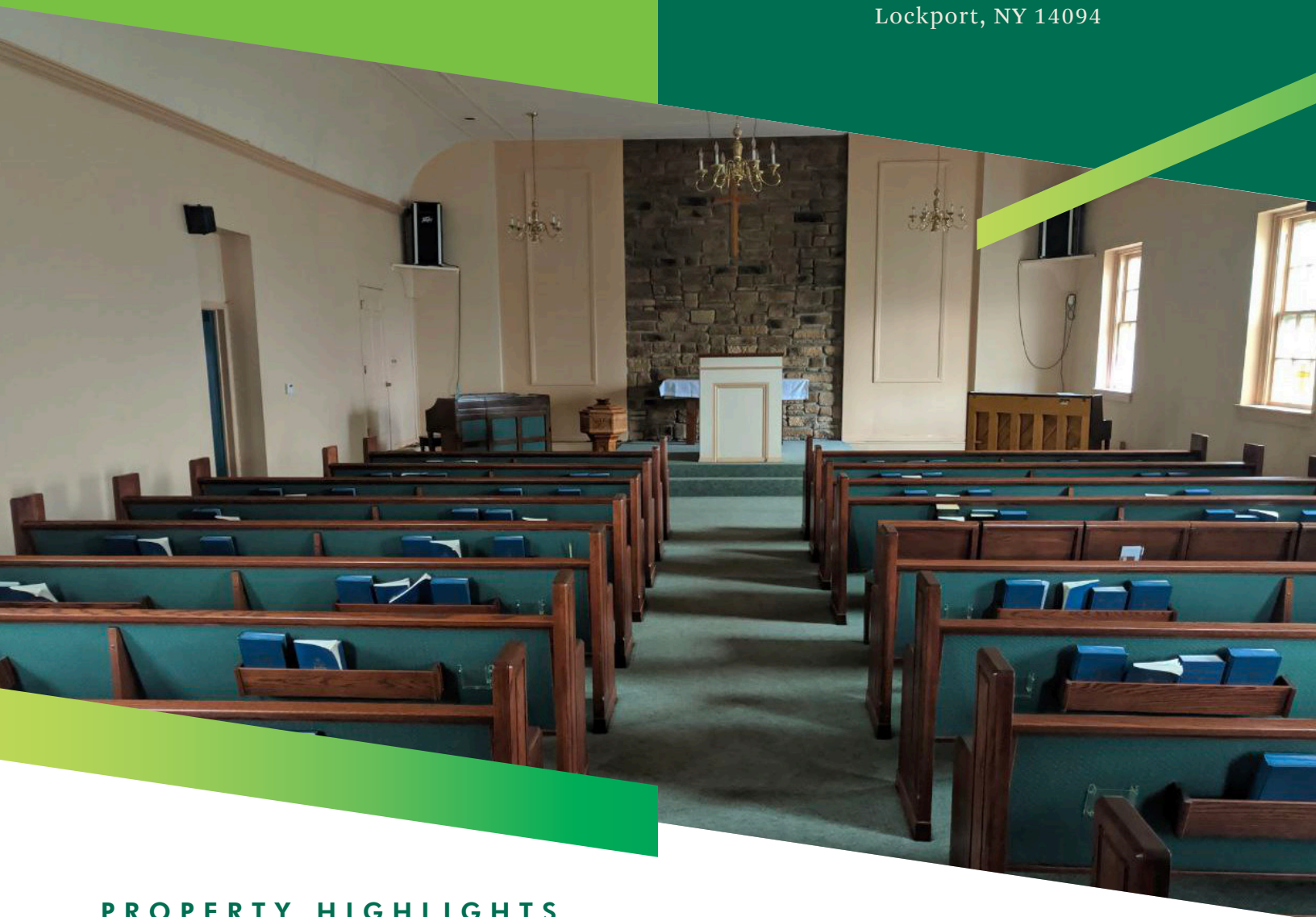


FOR SALE

6515
RIDGE ROAD

Lockport, NY 14094



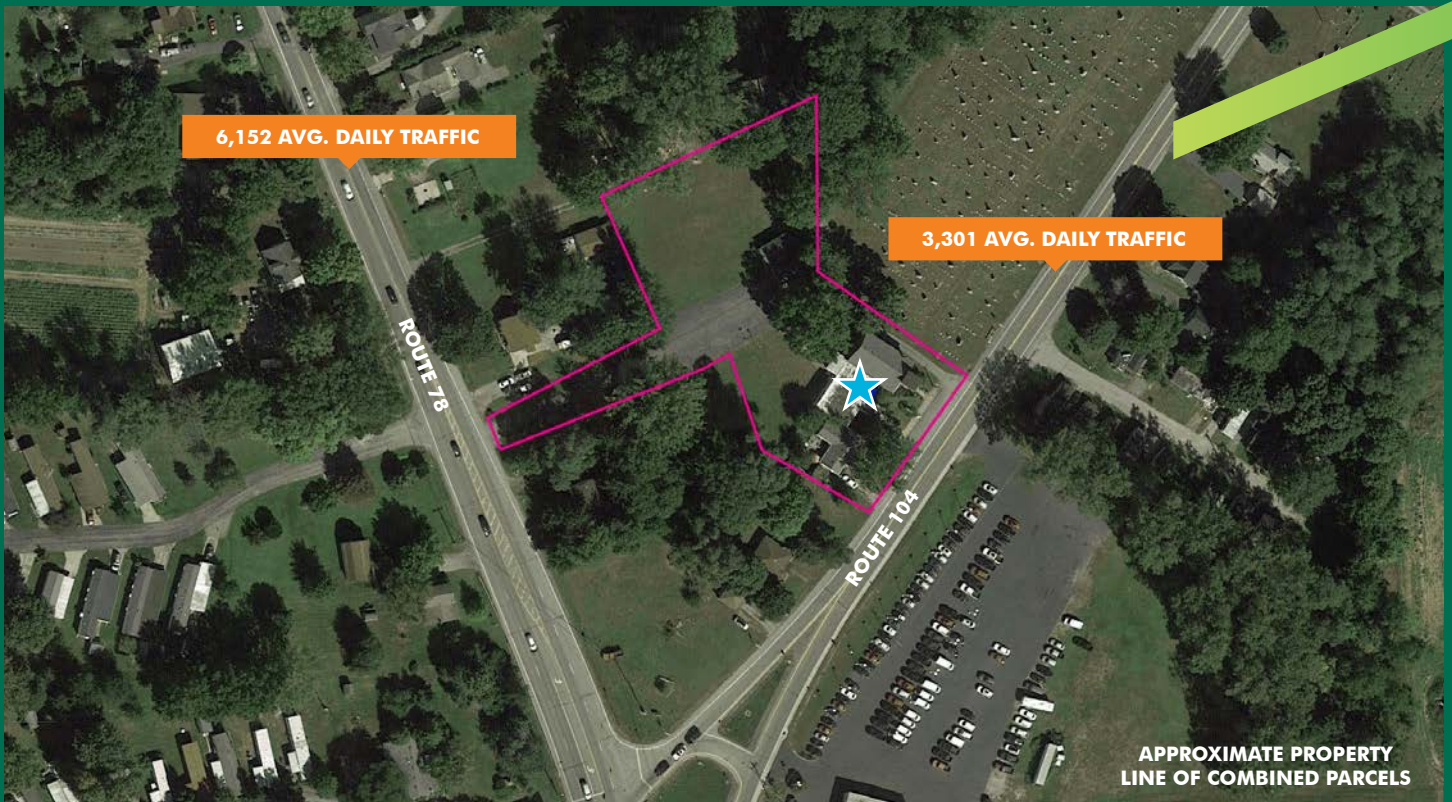
PROPERTY HIGHLIGHTS

This $\pm 5,163$ former church in Niagara County lends itself to a variety of unique reuse and redevelopment opportunities.

The property consists of three structures which include the church sanctuary ($\pm 1,749$ SF), church office building ($\pm 1,950$ SF), and a house (± 968 SF) on a total of 1.69 acres.

Located at the edge of the Wrights Corners commercial strip which includes Tops Friendly Markets, Dollar General, Rite Aid, Family Dollar, Tim Hortons, Howell Motors Ford and a variety local retailers.

- **5,163 SF among three structures on a 0.58 acre parcel**
- **Two additional parcels bring total land to 1.69 acres**
- **Frontage along both Route 104 and Route 78 in the hamlet of Wrights Corners**
- **Zoning: Highway Commercial & Community Facility**
- **Asking price: \$249,000**





PROPERTY LOCATION



PLEASE CONTACT:

ROBERT DIMMIG, AICP

Real Estate Salesperson
+1 716 855 3700 x 8712
robert.dimmig@cbre-buffalo.com

© 2020 CBRE, Inc. All rights reserved. This information has been obtained from sources believed reliable, but has not been verified for accuracy or completeness. You should conduct a careful, independent investigation of the property and verify all information. Any reliance on this information is solely at your own risk. CBRE and the CBRE logo are service marks of CBRE, Inc. All other marks displayed on this document are the property of their respective owners, and the use of such logos does not imply any affiliation with or endorsement of CBRE. Photos herein are the property of their respective owners. Use of these images without the express written consent of the owner is prohibited.