

# FOR LEASE

**3302 Williamsburg Road**  
**Richmond, VA 23231**



## Exclusive Agent:

Byron W. Holmes, CCIM, SIOR  
804.521.1448  
[byron@porterinc.com](mailto:byron@porterinc.com)

4801 Radford Avenue  
PO Box 6482  
Richmond, VA 23230  
804.353.7994  
[www.porterinc.com](http://www.porterinc.com)

- 7,452 SF Office/Warehouse Available
- Zoned B-2C
- 4 Drive- In Loading Doors
- 14' Ceiling Height
- FOR LEASE: \$5.00/SF NNN

**PORTER**  
R E A L T Y

Working Hard, Working Smart... For Our Customers

**CORFAC**  
International

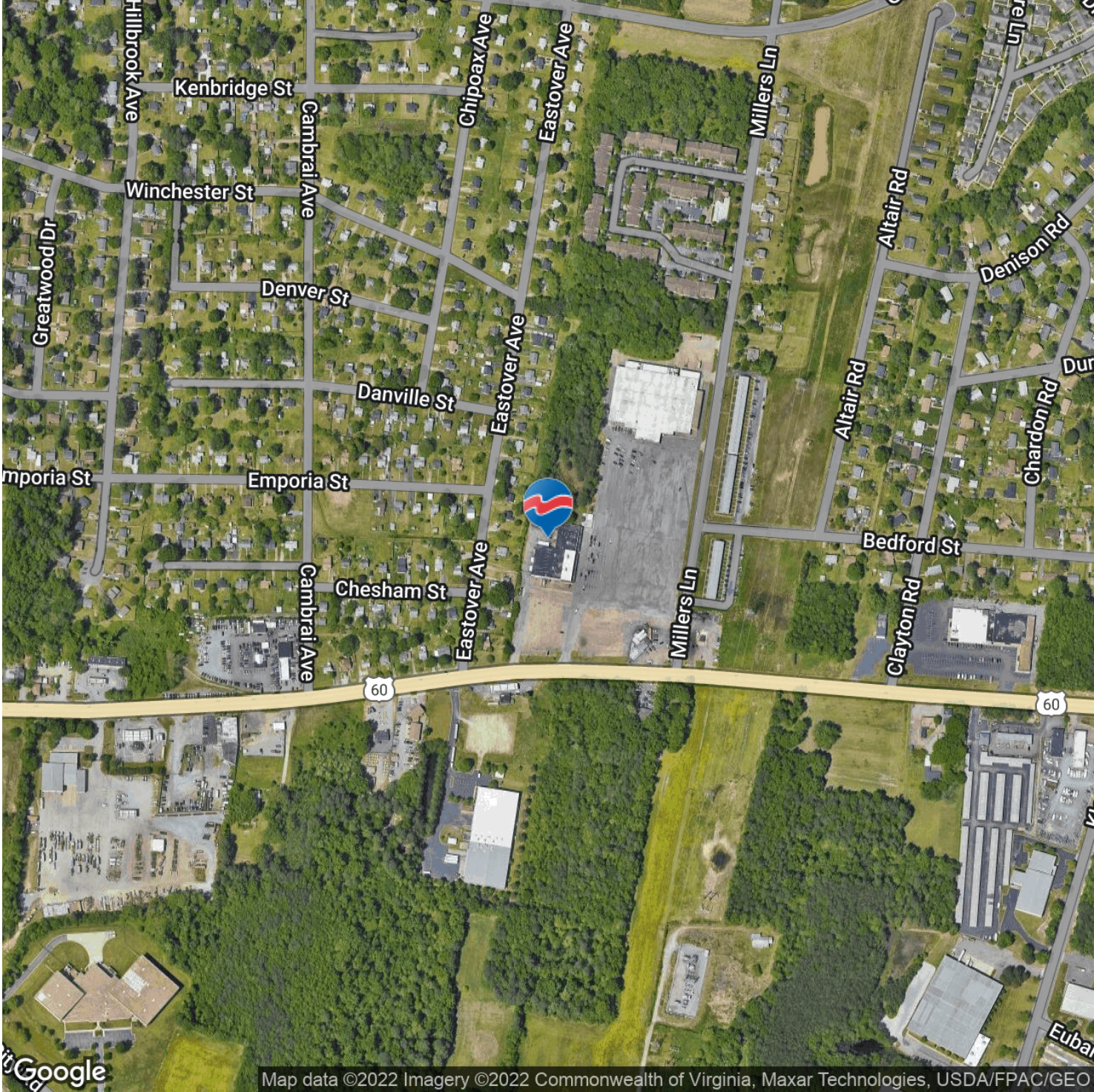
**SIOR**

**CCIM**

This information has been prepared by Porter Realty Company, Inc. for marketing purposes only. No representation or warranty, expressed or implied, is made as to the content or accuracy of the foregoing information. Terms of sale or lease and availability are subject to change or withdrawal without notice.

# 3302 Williamsburg Road , Richmond, VA 23231

## Industrial Property For Lease



Byron W. Holmes, CCIM, SIOR  
804.521.1448  
[byron@porterinc.com](mailto:byron@porterinc.com)

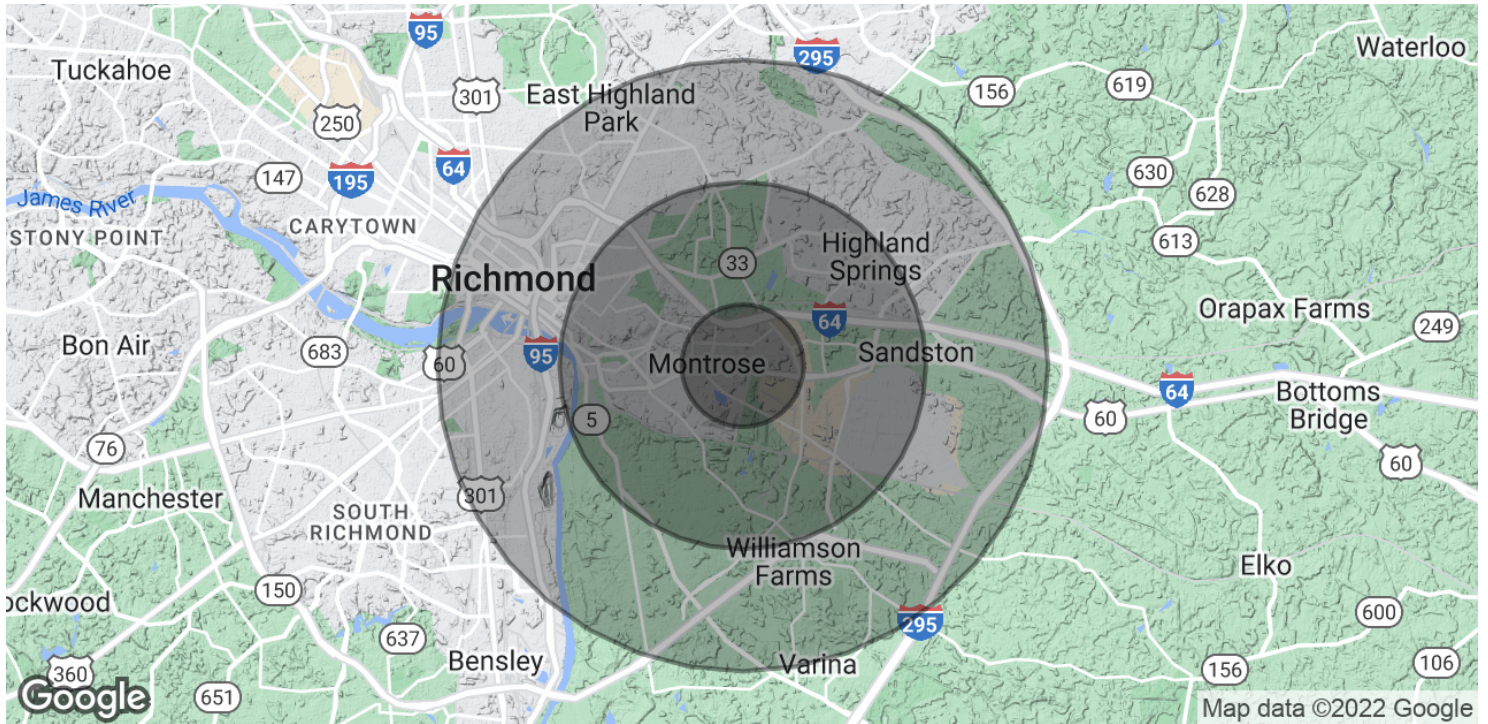


4801 Radford Avenue, PO Box 6482, Richmond, VA 23230 | [www.porterinc.com](http://www.porterinc.com)

This information has been prepared by Porter Realty Company, Inc. for marketing purposes only. No representation or warranty, expressed or implied, is made as to the content or accuracy of the foregoing information. Terms of sale or lease and availability are subject to change or withdrawal without notice.

# 3302 Williamsburg Road , Richmond, VA 23231

## Industrial Property For Lease



### POPULATION

	1 MILE	3 MILES	5 MILES
Total Population	5,751	51,738	124,422
Average Age	31.9	32.9	33.4
Average Age (Male)	28.5	30.0	31.5
Average Age (Female)	33.6	35.2	34.7

### HOUSEHOLDS & INCOME

	1 MILE	3 MILES	5 MILES
Total Households	2,252	20,215	48,972
# of Persons per HH	2.6	2.6	2.5
Average HH Income	\$50,979	\$48,713	\$49,615
Average House Value		\$204,223	\$189,307

\* Demographic data derived from 2020 ACS - US Census

Byron W. Holmes, CCIM, SIOR  
804.521.1448  
[byron@porterinc.com](mailto:byron@porterinc.com)



4801 Radford Avenue, PO Box 6482, Richmond, VA 23230 | [www.porterinc.com](http://www.porterinc.com)

This information has been prepared by Porter Realty Company, Inc. for marketing purposes only. No representation or warranty, expressed or implied, is made as to the content or accuracy of the foregoing information. Terms of sale or lease and availability are subject to change or withdrawal without notice.