



For Lease

High Visibility Office Building

Hugo F. Overdeput, CCIM

Vice President
+1 603 560 2764
hugo.overdeput@colliers.com



175 Canal Street, Suite 401
Manchester, NH 03101
+1 603 623 0100
colliers.com

215 Main Street Salem, NH

Property Highlights

- Newly renovated office building on the main commuter corridor
- 2,400± SF on the 2nd floor consists of several private offices, open space, conference room, kitchenette, server/utility room, and private restroom
- Located near the intersection of Route 97 and Geremonty Drive, a short distance to the MA/NH border
- Join TUV USA, Inc. at this well-maintained, beautifully landscaped professional building

Information herein has been obtained from sources deemed reliable, however its accuracy cannot be guaranteed by Colliers International | New Hampshire & Maine. The user is required to conduct their own due diligence and verification. Colliers International | New Hampshire & Maine is independently owned and operated.

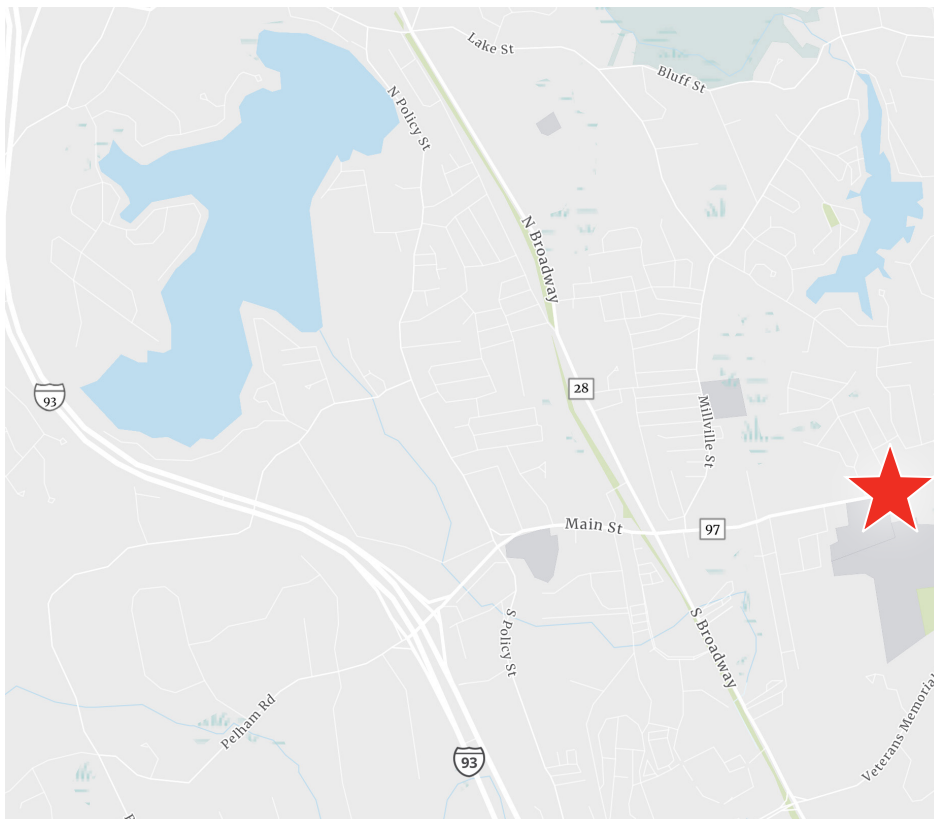
For Lease

Specifications

Address:	215 Main Street
Location:	Salem, NH 03079
Building Type:	Office
Year Built:	1920
Year Renovated:	2002
Total Building SF:	10,215±
Available SF:	2,400±
Acreage:	1.0±
Utilities:	Municipal water & sewer FHA propane
Zoning:	Business Neighborhood
Parking:	Ample
Lease Rate:	\$16.00 modified gross



Locator Map



Contact us:

Hugo F. Overdeput, CCIM

Vice President

+1 603 560 2764

hugo.overdeput@colliers.com



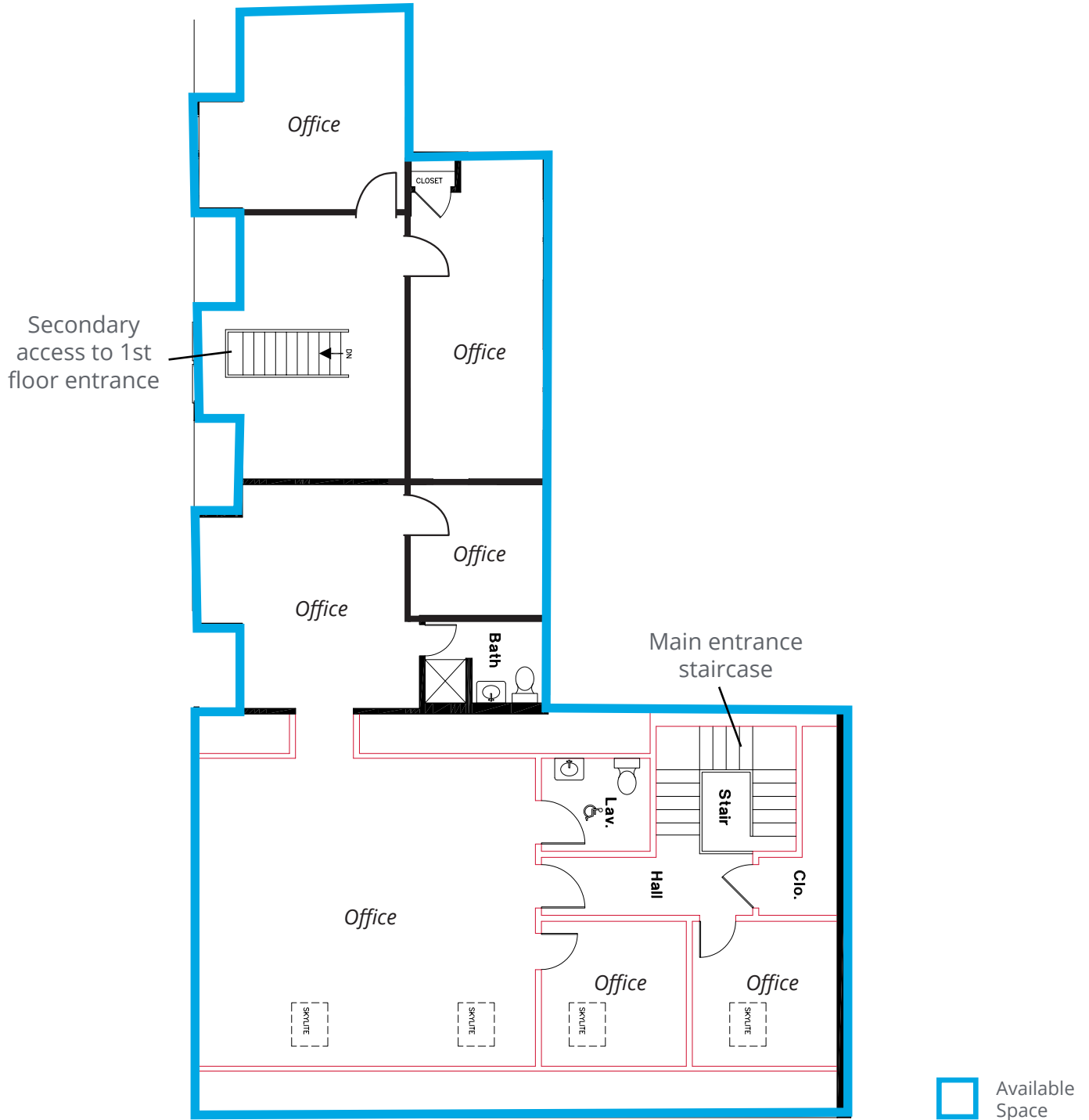
175 Canal Street, Suite 401

Manchester, NH 03101

+1 603 623 0100

colliers.com

Suite 2A Floor Plan



Not to Scale.

A-2
Sheet 2 of 4

Seal

Drawn:	JDS
Checked:	JDS
Approved:	SH
	XXX
	XXX
Scale:	
Date:	6/28/09
Project No.:	JD8-24-09

Project Name:	Hatem Professional Building
Prepared For:	Steve Hatem
Project Address:	215 Main Street Salem, New Hampshire
Sheet Title:	Existing Second Floor Plan

	Joel David Silverwatch, Architect AIA
	Architecture · Engineering · Land Planning
	163 Main Street Salem, New Hampshire 03079
	603.894.4490 603.426.3028 ARKATEXT@AOL.COM