

FOR SUBLEASE

SOUTH EUCLID

14481

CEDAR ROAD

South Euclid, Ohio 44121

NOW AVAILABLE



PROPERTY DETAILS

- + 7,372 Sq. Ft. retail/office space with attached drive thru
- + Sublease expiration: 6/30/2021
- + Lease rate: \$17.00
- + Right-in right-out access
- + Located next to Brueggers Bagels
- + Less than one mile west of Legacy Village & Beachwood Place Mall



CONTACT US

TIM SOEDER

Senior Associate
+1 216 363 6448
tim.soeder@cbre.com

LATEEFAH BURNS

Associate
+1 216 363 6414
lateefah.burns@cbre.com

CBRE INC.

950 Main Avenue Suite 200
Cleveland, OH 44113
www.cbre.com

www.cbre.com/huntington

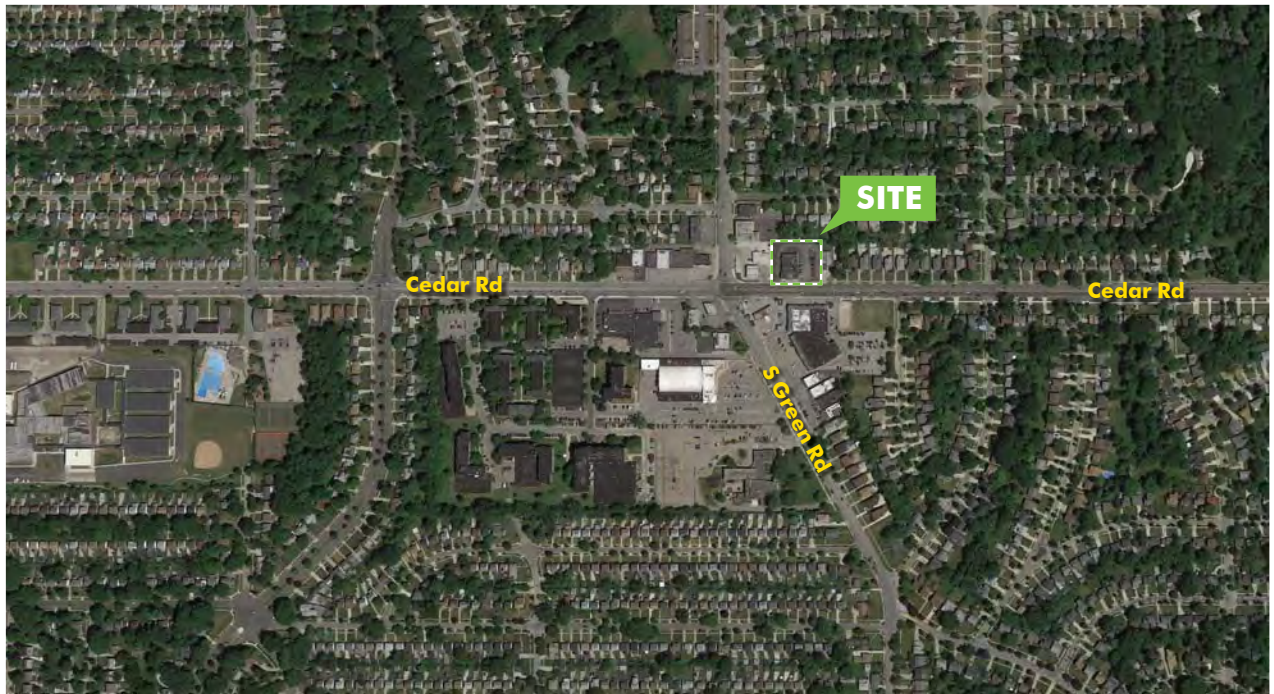
CBRE

FOR SUBLEASE SOUTH EUCLID

14481
CEDAR ROAD
South Euclid, Ohio 44121



AERIAL MAP



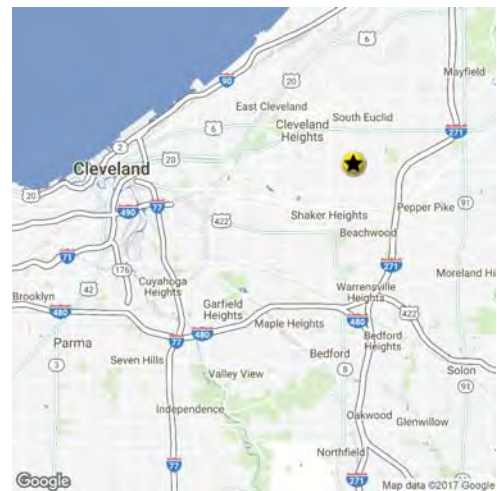
DEMOGRAPHICS

Estimated Demographics

	1 Mile	3 Miles	5 Miles
Population	16,295	111,066	293,225
Daytime Population	5,254	99,432	249,205
Average HH Income	\$86,853	\$91,769	\$69,864
Median HH Income	\$68,351	\$63,189	\$43,550

Traffic Counts

Cedar Rd	19,001 VPD
South Green Rd	13,513 VPD



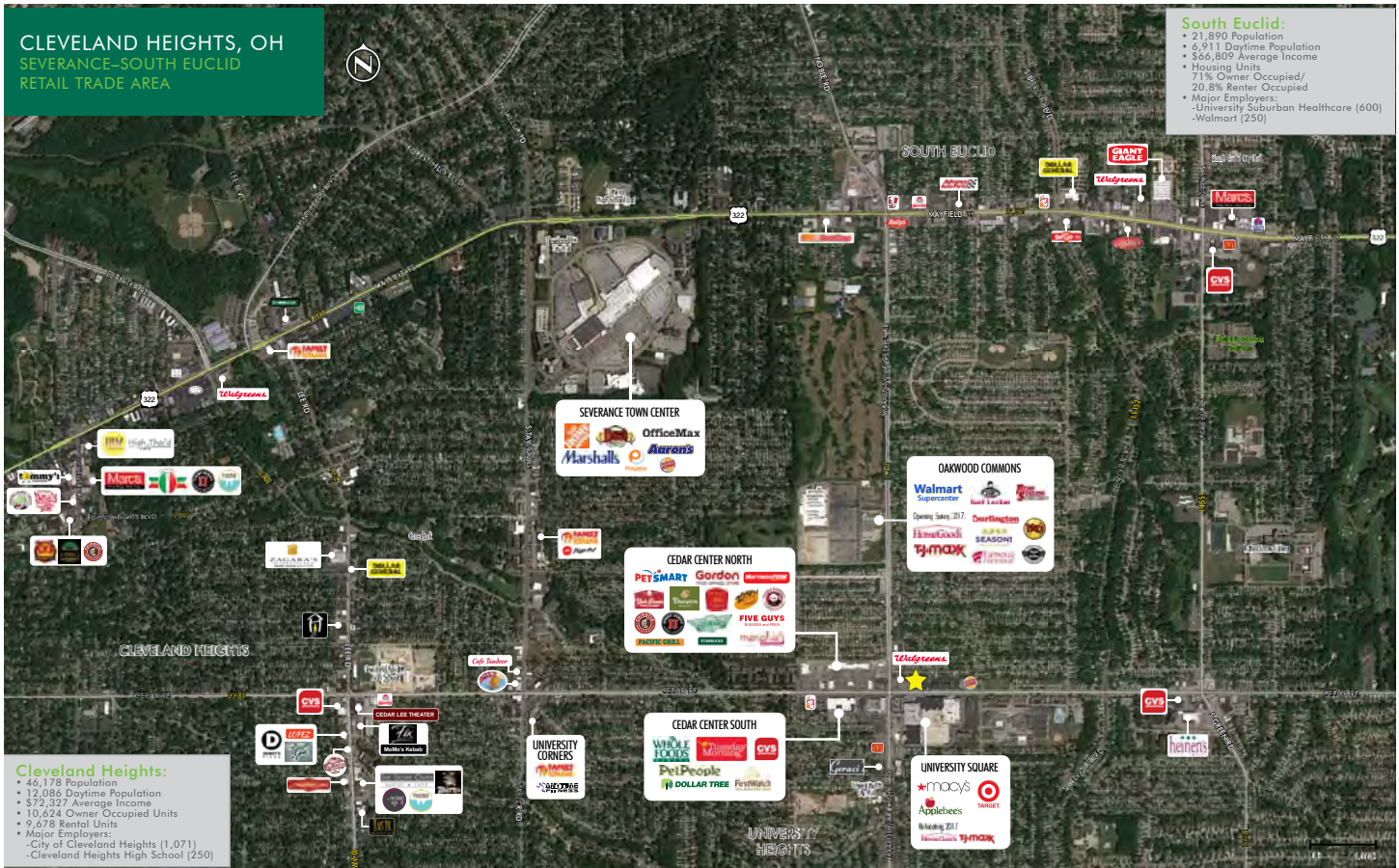
© 2017 CBRE, Inc. This information has been obtained from sources believed reliable. We have not verified it and make no guarantee, warranty or representation about it. Any projections, opinions, assumptions or estimates used are for example only and do not represent the current or future performance of the property. You and your advisors should conduct a careful, independent investigation of the property to determine to your satisfaction the suitability of the property for your needs. Photos herein are the property of their respective owners and use of these images without the express written consent of the owner is prohibited. CBRE and the CBRE logo are service marks of CBRE, Inc. and/or its affiliated or related companies in the United States and other countries. All other marks displayed on this document are the property of their respective owners.

FOR SUBLEASE SOUTH EUCLID

14481
CEDAR ROAD
South Euclid, Ohio 44121



TRADE AREA



CONTACT US

TIM SOEDER
Senior Associate
+1 216 363 6448
tim.soeder@cbre.com

LATEEFAH BURNS
Associate
+1 216 363 6414
lateefah.burns@cbre.com

CBRE INC.
950 Main Avenue Suite 200
Cleveland, OH 44113
www.cbre.com

www.cbre.com/huntington

