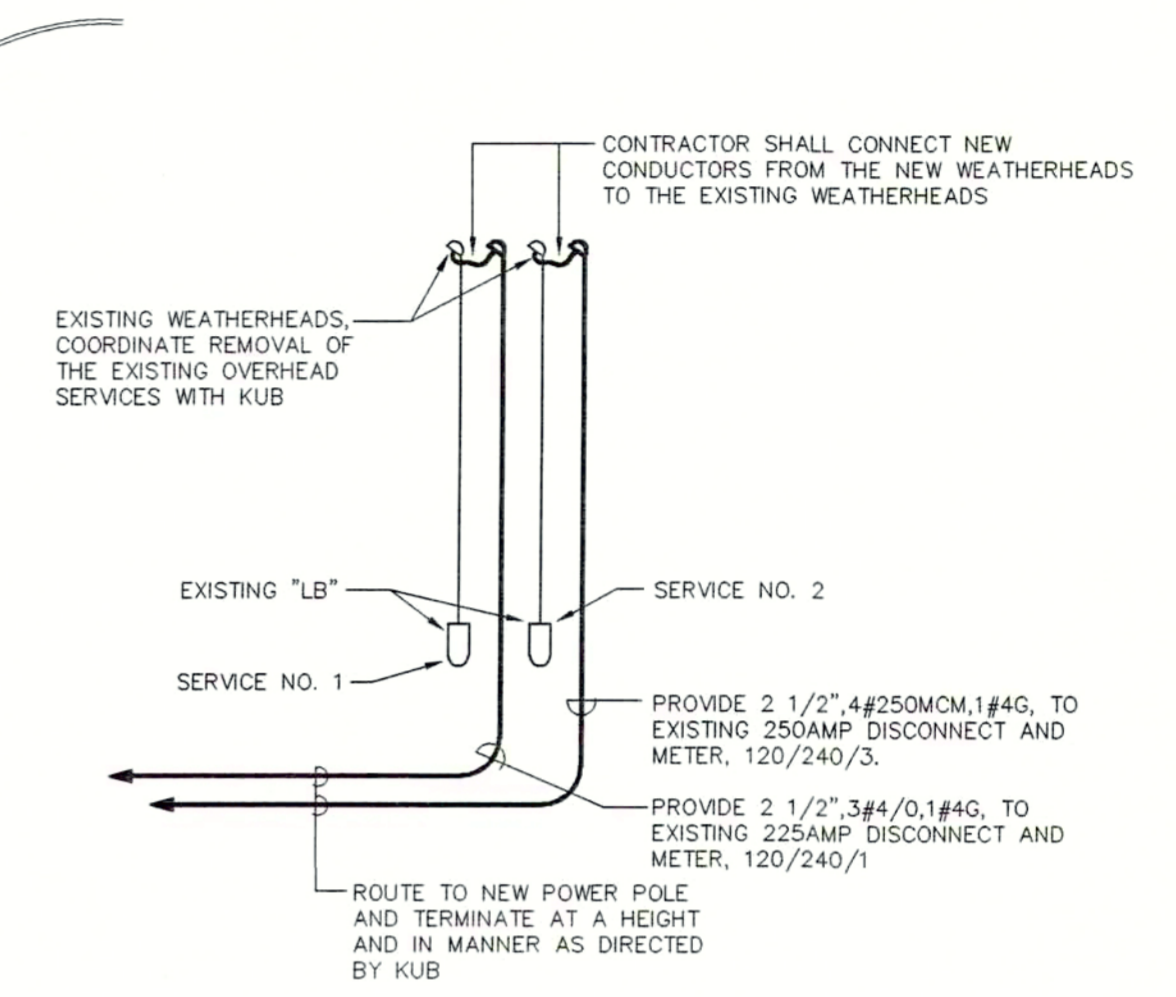
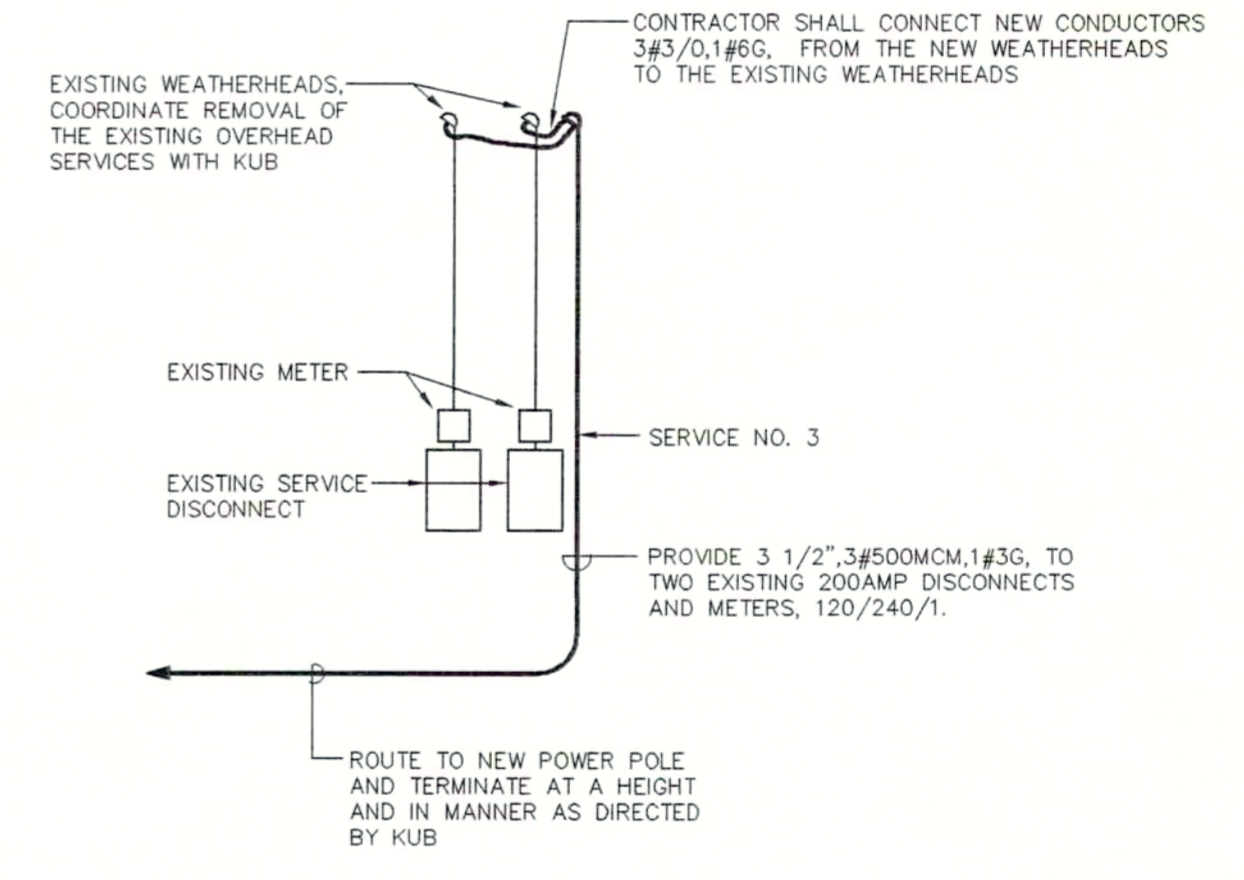


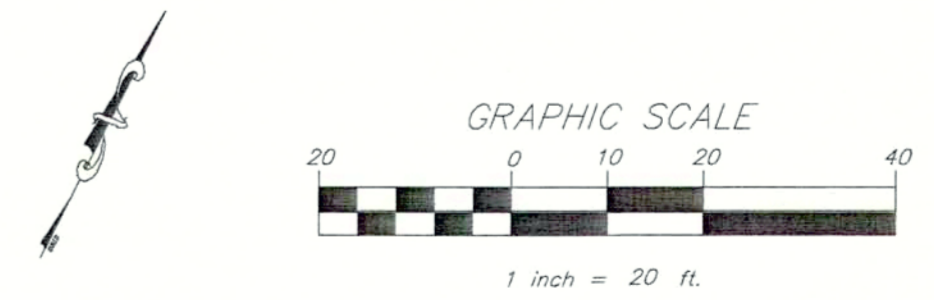
**SITE PLAN - REVISED ELECTRICAL POWER SERVICES**  
 NO SCALE



**BUILDING NO. 1 FEEDER**  
 NO SCALE



**BUILDING NO. 2 FEEDER**  
 NO SCALE



310 SIMMONS RD., SUITE K - KNOXVILLE, TENNESSEE 37922  
 PH. 865-671-2281 LDS PROJECT NO. 20317

revisions

**ENGINEERING SERVICES GROUP, INC.**  
 900 EAST HILL AVE., SUITE 350  
 KNOXVILLE, TENNESSEE 37915  
 (615) 522-0390  
 PROJECT NO. 23379

COPYRIGHT 2003  
 BOUNDS & GILLESPIE ARCHITECTS, L.L.C.  
 ALL DRAWINGS, ELECTRONIC MEDIA, AND ALL RELATED MATERIALS ARE THE SOLE PROPERTY OF BOUNDS & GILLESPIE ARCHITECTS, L.L.C. AND ITS SUCCESSORS. USE OF ITS ORIGINAL IDEAS AND INTENT IS TO BE RESTRICTED AND ITS USE AUTHORIZED BY BOUNDS & GILLESPIE ARCHITECTS, L.L.C. REUSE, MODIFICATION, OR REPRODUCTION BY ANY METHOD IN WHOLE OR IN PART BY UNAUTHORIZED PERSONS OR COMPANIES IS STRICTLY PROHIBITED.

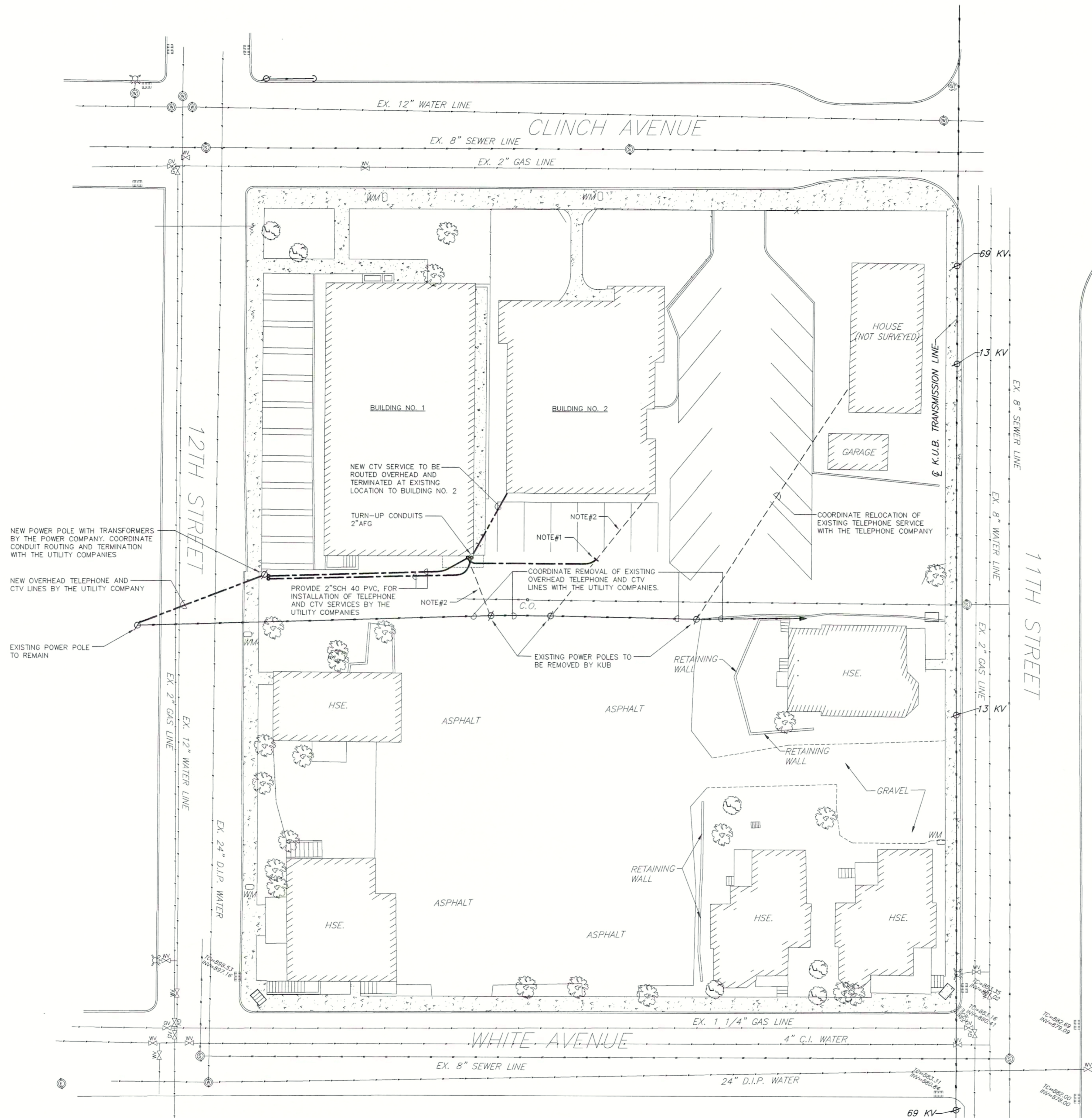


**BOUNDS & GILLESPIE ARCHITECTS, L.L.C.**  
 7075 Stone Hills Blvd., Suite 4  
 Memphis, Tennessee 38133-4010  
 (901) 377-8033 FAX 386-5765  
<http://www.bngarchitects.com>

**THE INN at THE UNIVERSITY**  
 KNOXVILLE, TENNESSEE

**ELECTRICAL SITE PLAN**

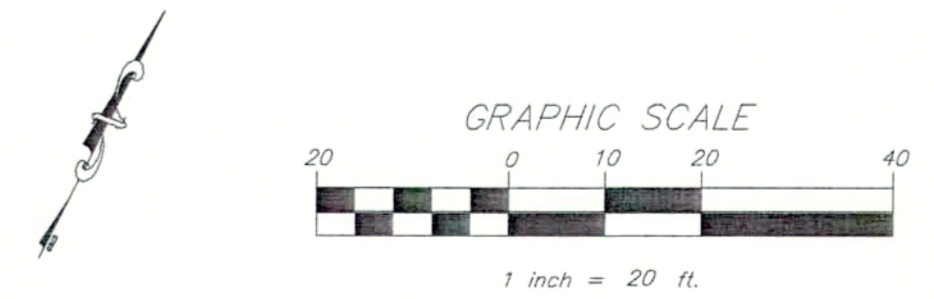
SCALE: 1" = 20'  
 date: 09-24-03  
 sheet: SE-1



**SITE PLAN - TELEPHONE & CTV SERVICES**  
NO SCALE

- NOTES:
1. INTERCEPT EXISTING UNDERGROUND TELEPHONE CONDUIT AND EXTEND TO NEW LOCATION AS SHOWN. PROVIDE PULLSTRING IN THE EMPTY CONDUIT.
  2. COORDINATE REMOVAL OF THE EXISTING UNDERGROUND TELEPHONE SERVICE WITH BELLSOUTH.
  3. CONTRACTOR SHALL COORDINATE REMOVAL AND RECONNECTION OF THE TELEPHONE AND CTV SERVICES WITH THE UTILITY COMPANIES AND THE BUILDING TENANTS TO MINIMIZE DOWNTIME OF SERVICES TO THE BUILDINGS.

- ELECTRICAL SPECIFICATIONS**
- ALL WORK SHALL COMPLY WITH THE LATEST ISSUE OF ALL NATIONAL, STATE, AND LOCAL CODES.
  - THE ELECTRICAL CONTRACTOR SHALL OBTAIN AND PAY FOR ALL PERMITS, INSPECTIONS, AND UTILITY COMPANY FEES AS REQUIRED.
  - ELECTRICAL LAYOUTS ARE DIAGRAMMATICAL IN NATURE. EXACT LOCATIONS SHALL BE COORDINATED WITH EXISTING CONDITIONS AND SERVICES.
  - THE ELECTRICAL CONTRACTOR SHALL BE RESPONSIBLE FOR ALL CUTTING AND PATCHING REQUIRED BY THEIR WORK. COORDINATE WITH GENERAL CONTRACTOR.
  - ALL WIRING BELOW GRADE SHALL BE IN SCHEDULE 40 PVC CONDUIT. CHANGE TO SCH 80 PVC CONDUIT PRIOR TO TURNING UP FROM GRADE. EXPOSED CONDUIT SHALL BE SCH 80 PVC.
  - ALL CONDUCTORS SHALL BE TYPE "THWN/THHN" DUAL INSULATION COPPER. CURRENT CARRYING CAPACITY OF ALL CONDUCTORS SHALL BE BASED ON 75 DEGREE C REGARDLESS OF INSULATION TYPE.
  - CONTRACTOR SHALL COORDINATE WITH KUB AND BELLSOUTH FOR ARRANGEMENT OF ELECTRIC AND TELEPHONE SERVICES. CONTRACTOR SHALL ALSO ARRANGE FOR ANY TEMPORARY SERVICES REQUIRED DURING CONSTRUCTION.
  - COORDINATE ALL CONSTRUCTION DELIVERIES, DISPOSAL OF CONSTRUCTION TRASH, ETC. WITH OWNER.
  - CONTRACTOR SHALL MAINTAIN A SET OF RECORD DRAWINGS SHOWING ANY CHANGES AND MODIFICATIONS THAT OCCURRED DURING THE CONSTRUCTION PERIOD. AFTER COMPLETION OF CONSTRUCTION THESE RECORD DRAWINGS SHALL BE TURNED OVER TO THE OWNER.
  - ALL CONDUITS AND BRANCH CIRCUITS SHALL CONTAIN AN INSULATED EQUIPMENT GROUNDING CONDUCTOR.
  - THE CONTRACTOR SHALL WARRANT AND GUARANTEE ALL WORK EXECUTED UNDER THIS DIVISION TO BE FREE FROM DEFECTS FOR A PERIOD OF ONE YEAR AFTER COMPLETION.
  - THE CONTRACTOR SHALL VISIT THE JOB PRIOR TO SUBMISSION OF HIS BID AND VERIFY EXISTING CONDITIONS. ADDITIONAL CHARGES FOR WORK REQUIRED AS A RESULT OF NOT VISITING THE SITE WILL NOT BE CONSIDERED.



**LAND DEVELOPMENT SOLUTIONS**  
310 SIMMONS RD., SUITE K - KNOXVILLE, TENNESSEE 37922  
PH. 865-671-2281 LDS PROJECT NO. 20317

revisions

**ENGINEERING SERVICES GROUP, INC.**  
800 EAST HILL AVE., SUITE 300  
KNOXVILLE, TENNESSEE 37915  
865-222-2395  
PROJECT NO. 23379

COPYRIGHT 2003  
© BOUNDS & GILLESPIE ARCHITECTS, L.L.C.  
ALL DRAWINGS, ELECTRONIC MEDIA, AND ALL RELATED MATERIALS ARE THE SOLE PROPERTY OF BOUNDS & GILLESPIE ARCHITECTS, L.L.C. AND ITS SUCCESSORS. USE OF ITS ORIGINAL IDEAS AND INTENT IS TO BE RESTRICTED AND ITS USE AUTHORIZED BY BOUNDS AND GILLESPIE ARCHITECTS, L.L.C. REUSE, MODIFICATION, OR REPRODUCTION BY ANY METHOD IN WHOLE OR IN PART BY UNAUTHORIZED PERSONS OR COMPANIES IS STRICTLY PROHIBITED.



**BOUNDS & GILLESPIE ARCHITECTS, L.L.C.**  
7875 Stage Hills Blvd., Suite 4  
Memphis, Tennessee 38133-4010  
(901) 377-8603 FAX 366-5766  
<http://www.boundsllc.com>

**THE INN at THE UNIVERSITY**  
KNOXVILLE, TENNESSEE

**ELECTRICAL SITE PLAN**  
SCALE: 1" = 20'  
date: 09-24-03  
sheet: SE-2