



ChoiceProperties

For lease

#54, 5381 - 72 Avenue SE, Calgary, AB

- 62,177 s.f. with nine (9) dock doors
- 'A' Class Industrial Building
- Located in Great Plains Industrial Park
- Clean existing office space with large marshalling areas
- Bonus concrete mezzanine for additional office or storage
- Ability to use south parking area as yard if desired (\pm 0.50 acres)
- Quick access to major southeast thoroughfares and southeast Calgary ring road

Property Details

District Great Plains

Sprinklers ESFR

Zoning I-G (Industrial General)

Parking Stalls 82 (can be secured)

Building Size

Office:	5,327 s.f.
Warehouse:	56,850 s.f.
Total:	62,177 s.f.
Bonus Mezzanine:	5,243 s.f.

Power 600 Amps @ 347/600 Volts

Lighting LED

Ceiling Height 28'

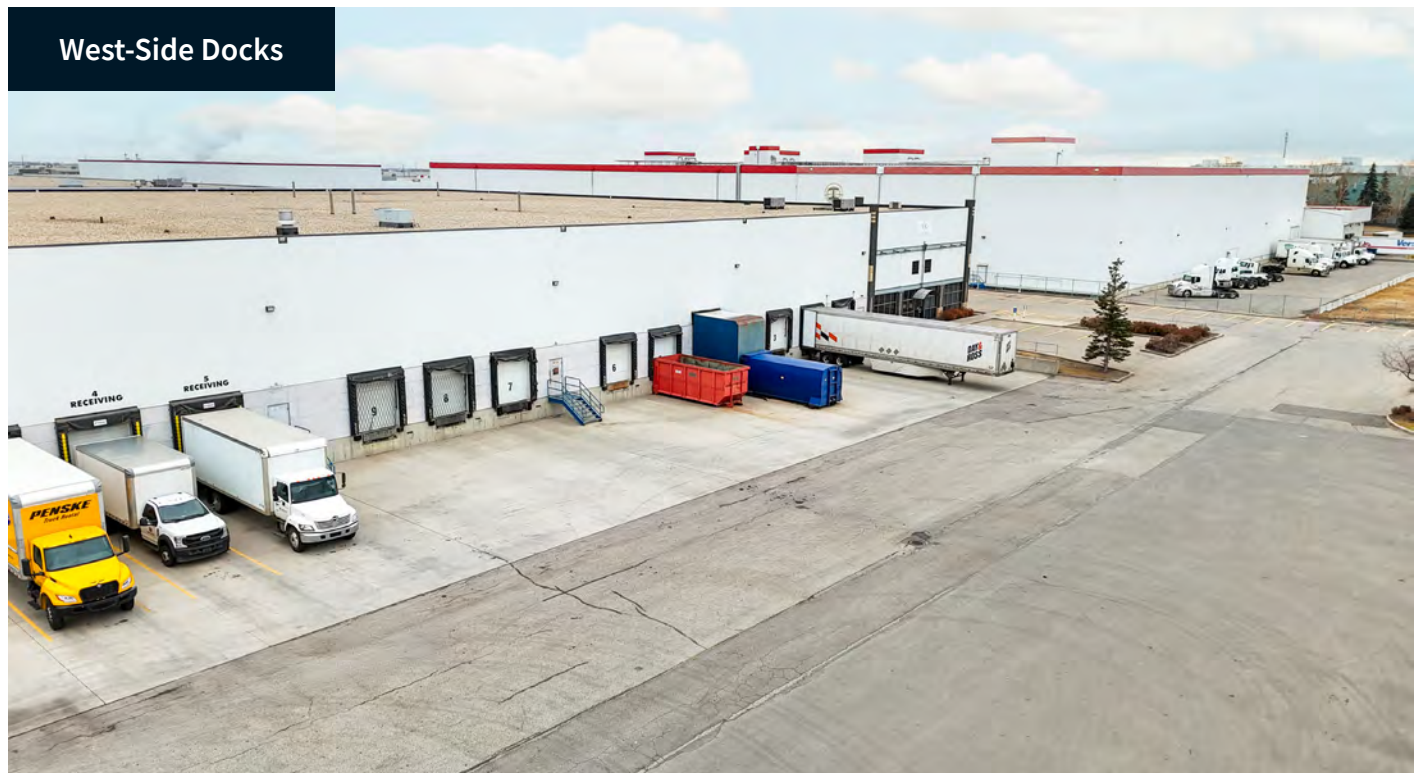
Lease Rate \$9.50 p.s.f.

Loading 9 - (8' x 9') Dock Doors

Op. Costs \$6.65 p.s.f.

Mezzanine Concrete / Steel

Available June 2026



Property Photos

Reception



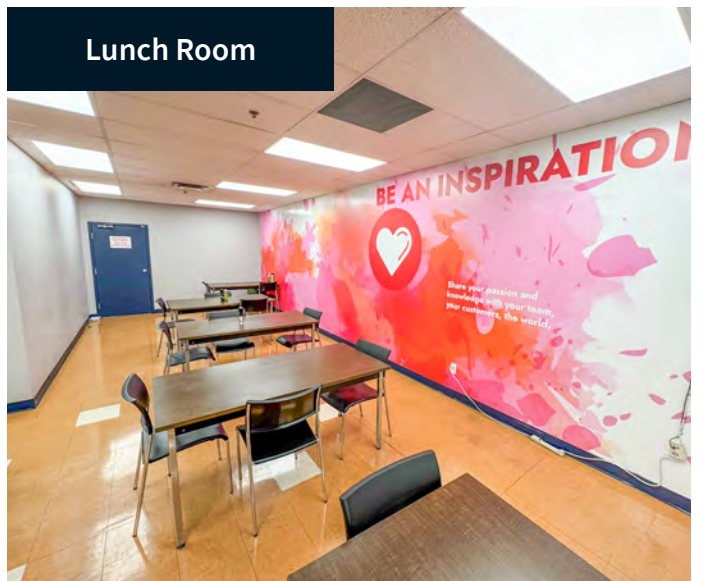
Warehouse



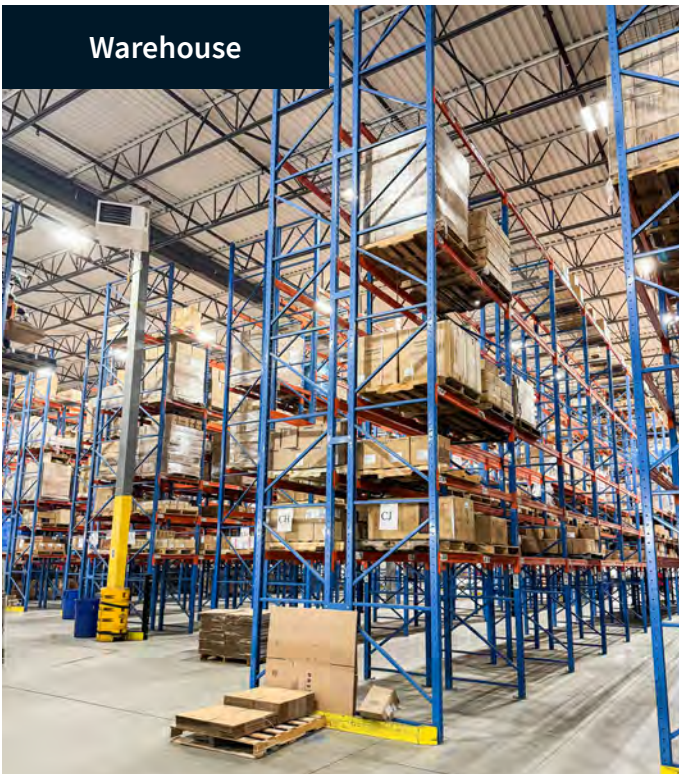
Mezzanine



Lunch Room



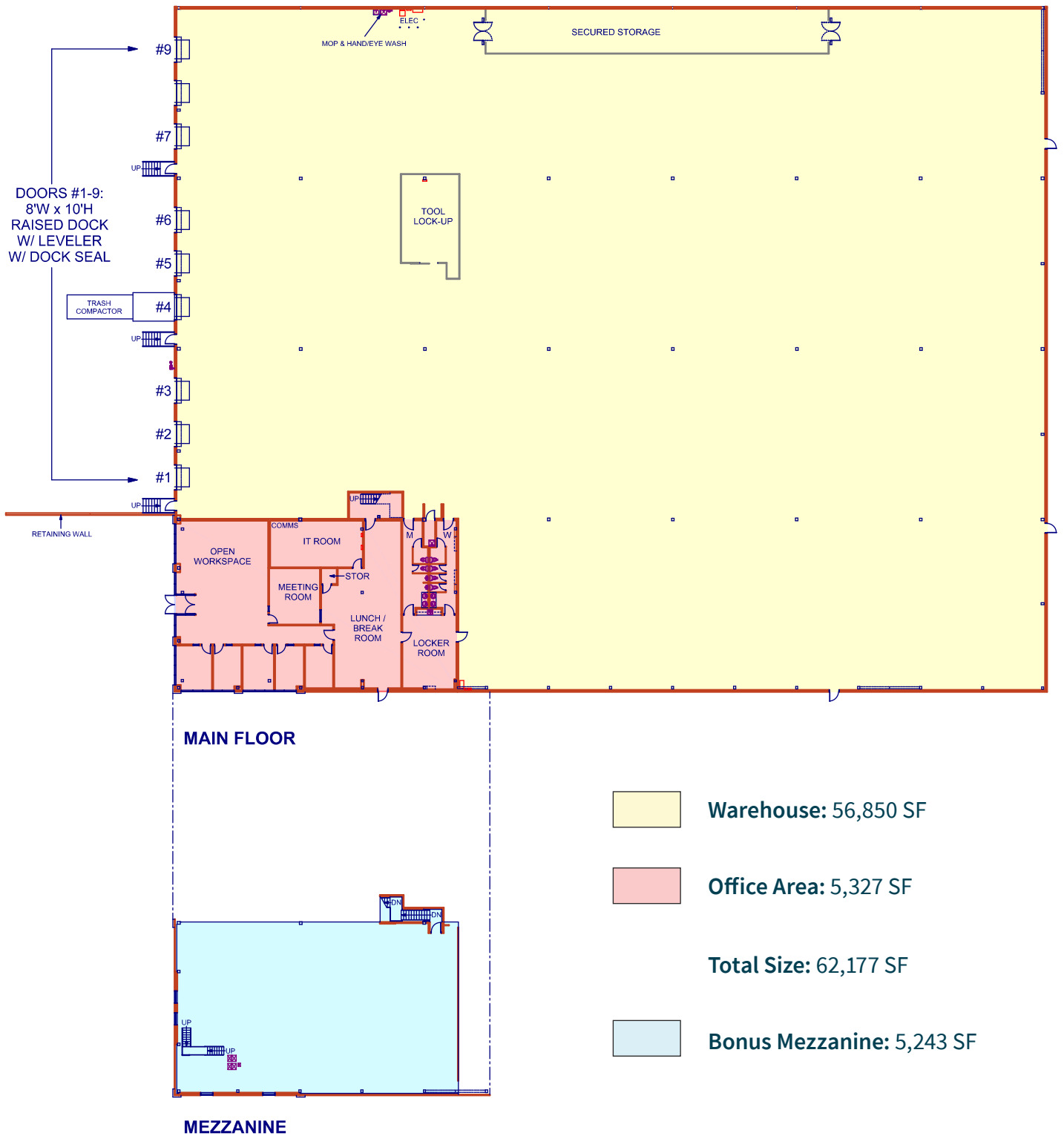
Warehouse



Locker Room

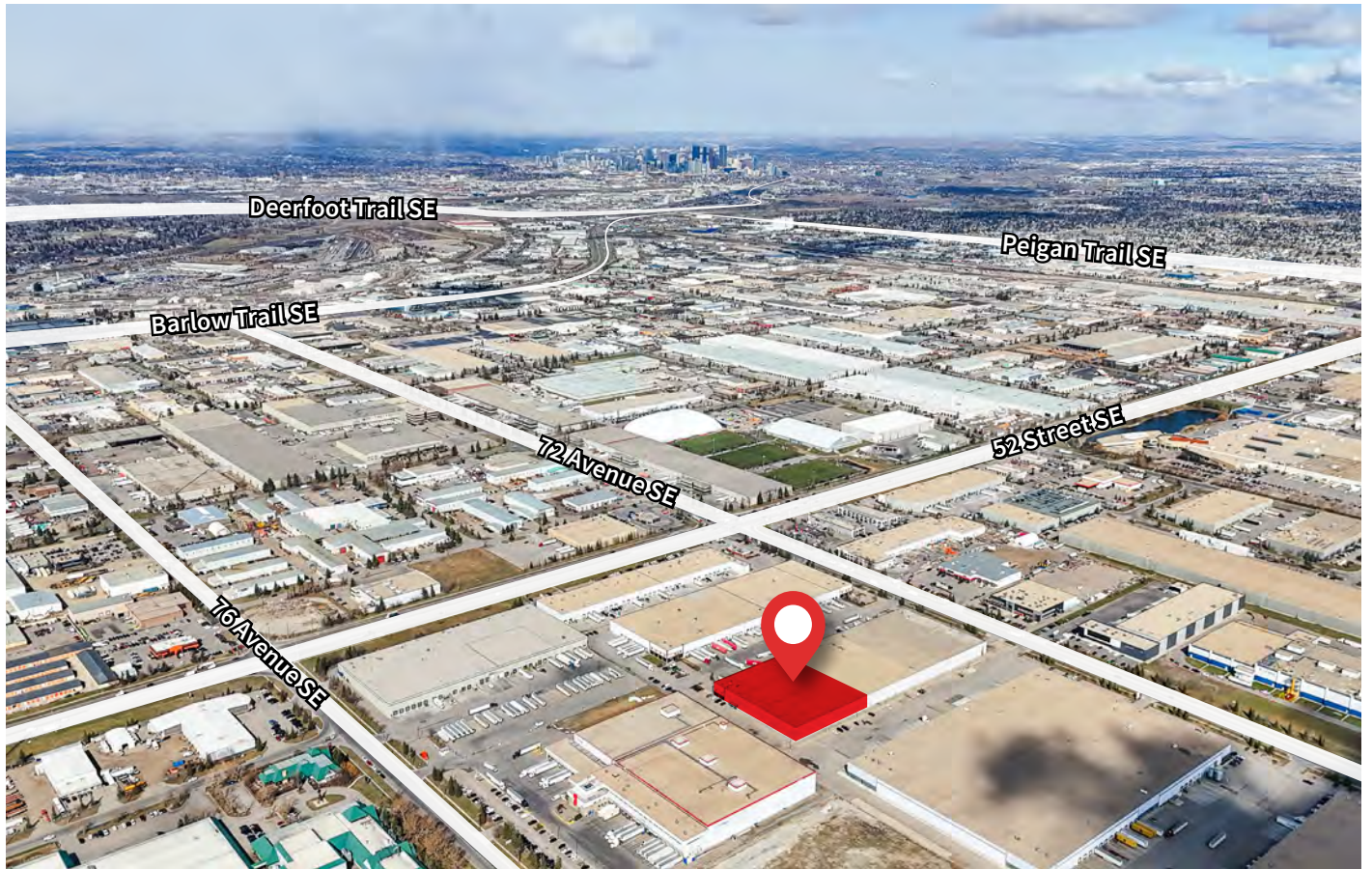


Floor Plan



*Floor plan may not exactly reflect the current office area layout and size.

Property Location



Drive Times



Glenmore Trail → **3 min. / 1.5 km**



Stoney Trail East → **6 min. / 4.3 km**



Barlow Trail → **4 min. / 1.9 km**



Downtown Calgary → **15 min. / 13.1 km**



Deerfoot Trail → **9 min. / 6.8 km**



Calgary Int. Airport → **20 min. / 22.2 km**

Contact us



Carey Koroluk

Lead Broker

Vice President

+1 403 456 2346

carey.koroluk@jll.com

Ryan Haney

Lead Broker

Executive Vice President

+1 403 456 2221

ryan.haney@jll.com

Austin Smith

Lead Broker

Vice President

+1 403 456 2197

austin.smith@jll.com

Marshall Toner

EVP, National Industrial

+1 403 456 2214

marshall.toner@jll.com

Chris Saunders

Executive Vice President

+1 403 456 2218

chris.saunders@jll.com

Troy Robinson

Associate

+1 403 670 7353

troy.robinson@jll.com

jll.ca