

FOR SUBLEASE



REVANT OPTICS



224 SE 2ND AVE | PORTLAND, OR 97214

- » Second Floor: ± 4,984 RSF
- » Excellent Creative Office Opportunity in Portland's Central East Side
- » Great Build-Out with Open, Collaborative Work Areas, Reception Area, 2 Conference Rooms, 2 Private Offices, Restrooms, Kitchenette, and 13' Ceiling Height
- » Potential Plug & Play Opportunity.
- » Secure Bike Storage Inside and Showers on Main Floor
- » Comprehensive Core and Shell Renovation Spring 2018
- » 15 Minute Walk to Downtown over the Burnside Bridge
- » Close Proximity to TriMet Transportation, I-5 and I-84, Offering Ease of Access To and From the Portland Metropolitan Area
- » Sublease Expires May 31, 2023
- » Rate: \$20.00 / SF / NNN

CONTACT US

CAPACITY COMMERCIAL GROUP 805 SW Broadway, Suite 600 Portland, OR | 97205
503.326.9000 | info@capacitycommercial.com | www.capacitycommercial.com

KENNY HOUSER

Senior Associate Broker

503.517.9875

kenny@capacitycommercial.com

SCOTT KAPPES, SIOR

Principal

503.517.9877

scottk@capacitycommercial.com

CHRIS KAPPES

Associate Broker

503.517.7127

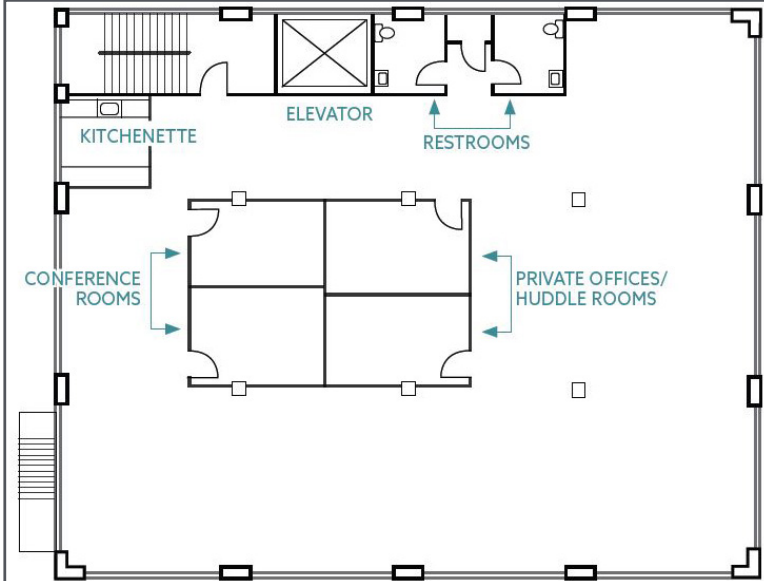
chris@capacitycommercial.com

Proud member of:



The information contained herein is believed to be accurate but is not warranted as to its accuracy and may change or be updated without notice. Seller or Landlord makes no representation as to the environmental condition of the property and recommends purchaser's or tenant's independent investigation.

FOR SUBLEASE



CONTACT US

CAPACITY COMMERCIAL GROUP 805 SW Broadway, Suite 600 Portland, OR | 97205
503.326.9000 | info@capacitycommercial.com | www.capacitycommercial.com

KENNY HOUSER

Senior Associate Broker

503.517.9875

kenny@capacitycommercial.com

SCOTT KAPPES, SIOR

Principal

503.517.9877

scottk@capacitycommercial.com

CHRIS KAPPES

Associate Broker

503.517.7127

chris@capacitycommercial.com

Proud member of:



The information contained herein is believed to be accurate but is not warranted as to its accuracy and may change or be updated without notice. Seller or Landlord makes no representation as to the environmental condition of the property and recommends purchaser's or tenant's independent investigation.