

340 Millburn Avenue, Millburn, NJ



Available For Lease
(Divisible)

SweetSpot
SIGNATURE SPACES

JUNG FU TEA

Property Highlights

- Prime corner in downtown Millburn at a signalized intersection
- Located at the southeast corner of Millburn Avenue and Main Street
- Large sidewalk approximately 20' for outdoor dining
- 2,800 SF (former Design store) (Divisible)
- Parking in rear (9 spaces), basement storage possible
- Two entrances to the space, one on Millburn Avenue and one on Main Street
- Co-tenants: Starbucks, Flywheel, Millburn Deli, Playabowls and Bubble Tea cafe

Financials

- Asking rent: Upon request
- \$6.50 PSF NNN

Traffic Counts

- Main Street: 12,160 VPD
- Millburn Avenue: 7,920 VPD

Demographics



Population

Med. HH
Income

Businesses

Employees

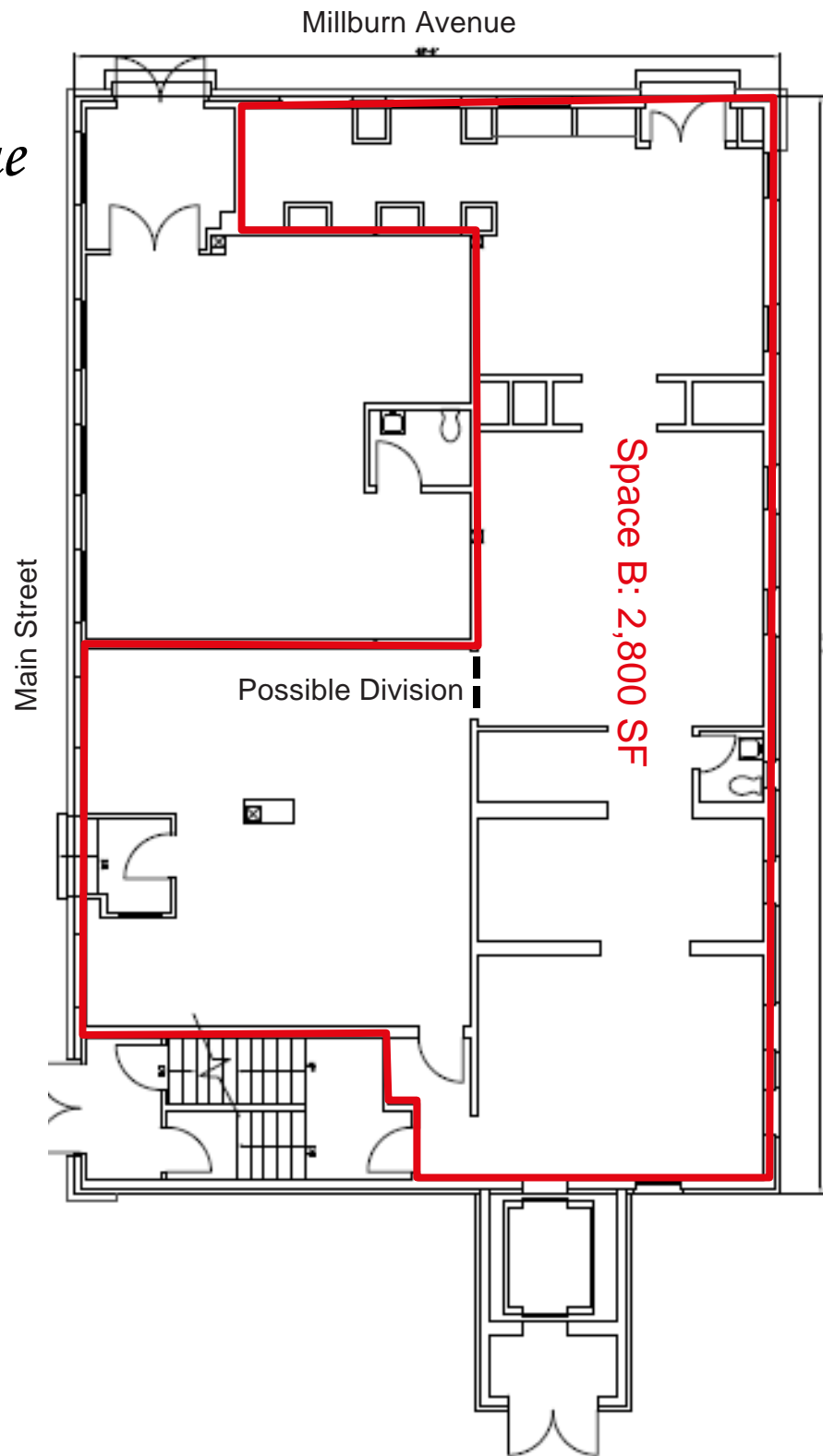
| | | | | |
|--------|---------|-----------|---------|--------|
| 1-Mile | 12,526 | \$133,447 | 8,840 | 1,045 |
| 3-Mile | 116,494 | \$116,936 | 63,491 | 5,581 |
| 5-Mile | 419,217 | \$86,713 | 158,131 | 13,942 |

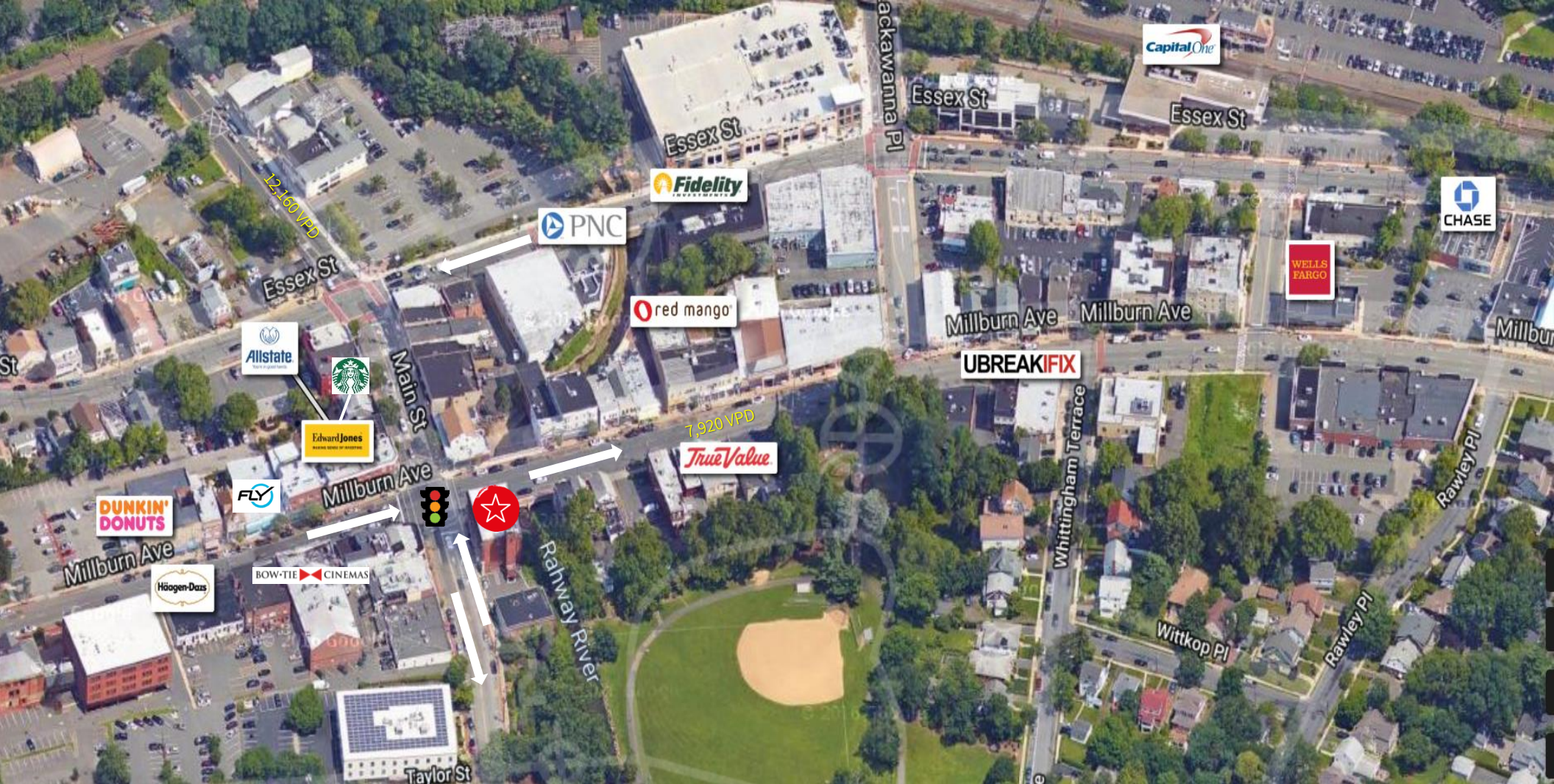


Floor Plan

340 Millburn Avenue

Millburn, NJ





For more information contact:

Marta Villa
 Senior Vice President
 D: +1 973 829 4782
 M: +1 973 715 8385
marta.villa@am.jll.com

