

ASH. ELEV. = 395.86'

Richard W. Sitnik  
6261 E. Taft Rd.

NOTE ELEVATIONS SHOWN HEREON BASED ON U.S.G. DATUM FROM TOWN OF CICERO SIXTH SEWER DISTRICT PLAN BY O'HRIEN & GERE, FILE NO. 3287.001-01RD, CONTRACT NO. 3, FILED NOVEMBER 2, 1987.

PERIMETER SURVEY PERFORMED BY OTHERS.

1 STORY METAL BUILDING  
F.F. = 398.11'

CONCRETE SIDEWALK VALVE

Back Bldg.

MINIMUM SETBACKS:

- 50' FRONT YARD
- 25' REAR YARD
- 15' SIDE YARD

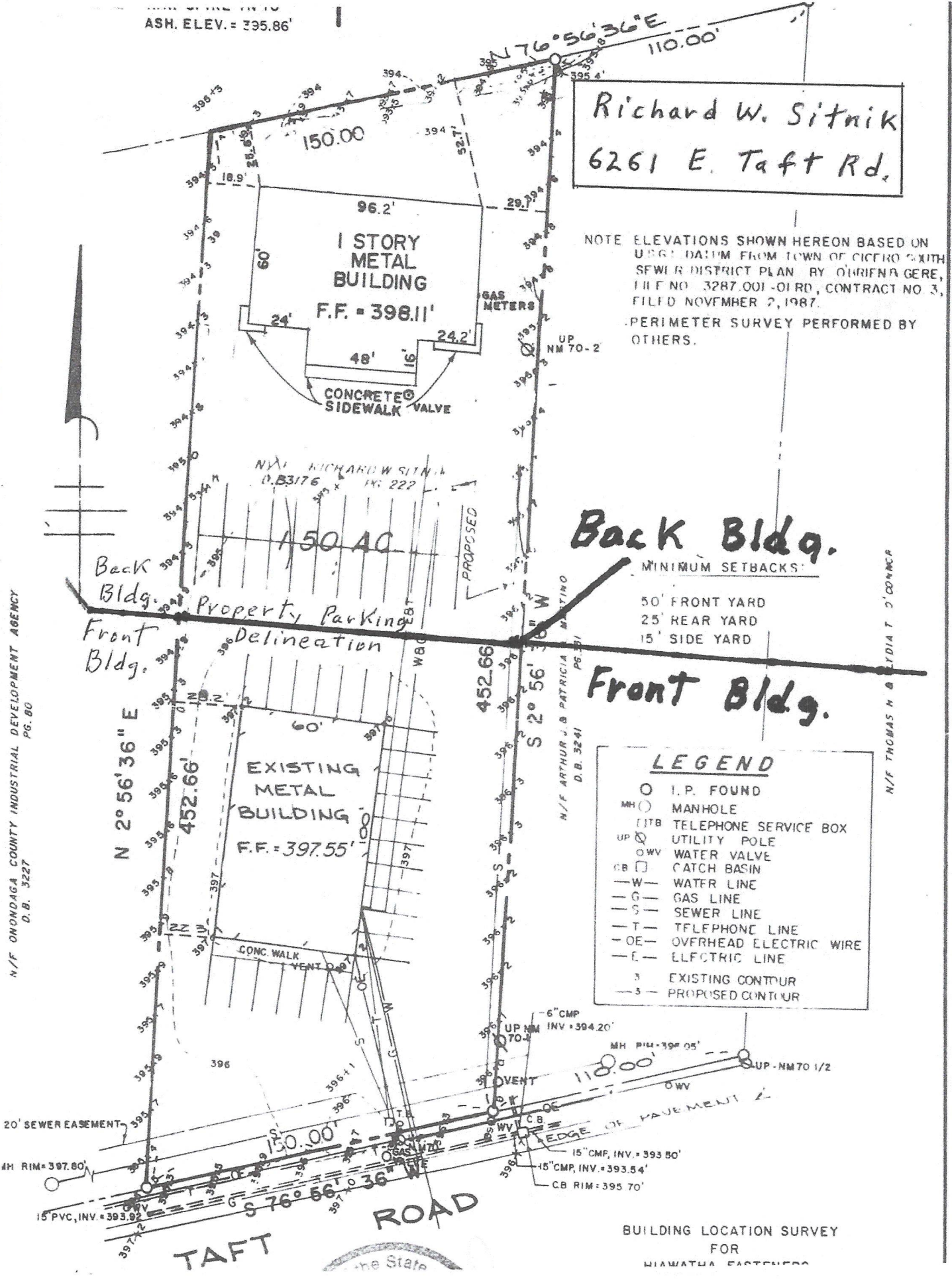
Front Bldg.

LEGEND

- I.P. FOUND
- MH ○ MANHOLE
- TB TELEPHONE SERVICE BOX
- UP ○ UTILITY POLE
- WV WATER VALVE
- CB □ CATCH BASIN
- W — WATER LINE
- G — GAS LINE
- S — SEWER LINE
- T — TELEPHONE LINE
- OE — OVERHEAD ELECTRIC WIRE
- E — ELECTRIC LINE
- 3 EXISTING CONTOUR
- 3- PROPOSED CONTOUR

N/F ONONDAGA COUNTY INDUSTRIAL DEVELOPMENT AGENCY  
D.B. 3227

N/F THOMAS H & LYDIA T. CONNER



BUILDING LOCATION SURVEY  
FOR  
HIAWATHA EASTERN