



# Sale Point

Washway Road, Sale, Cheshire M33 6AG

bruntwood

# Make an impression

With all the travel and business connections you'd expect from a bustling major town like Sale, recently renovated Sale Point offers a high quality, contemporary commercial office space to rent in a well-connected area of Greater Manchester, just outside of the city.

In order to help your business grow the workspace at Sale Point is flexible to suit your demands, with a great range of benefits and ways to design and fit out your new office.

With Sale Metrolink station just a 10 minute walk away, the building has some of the most accessible and affordable workspace in the area.

## Key features:

Open plan spaces

Lift access

DDA compliant

Car parking

Customer service team on-site

Superfast internet

24 hour access

Bike racks

Natural light

Air conditioning

Showers

sale point



**Parking**

On-site



**10 mins**

Walk to Metrolink

# What's on offer?

Whether you're looking for a small all-inclusive office with a short term lease or a large suite where you can really make your mark, we can create a space that works for you.

## Leased

Lay the foundations for success and make your space your own with a Bruntwood leased office. Our flexible leases in landmark office buildings help you to choose the strategy that's right for your organisation. Leased offices provide a blank canvas that you can design and manage to perfectly fit your needs.

### Ideal for:

Companies of any size that want to design and manage their own unique office space.

### What's included:

Run your office your way with the flexibility to add on an optional design and fit-out from Bruntwood

Private office

24/7 building access

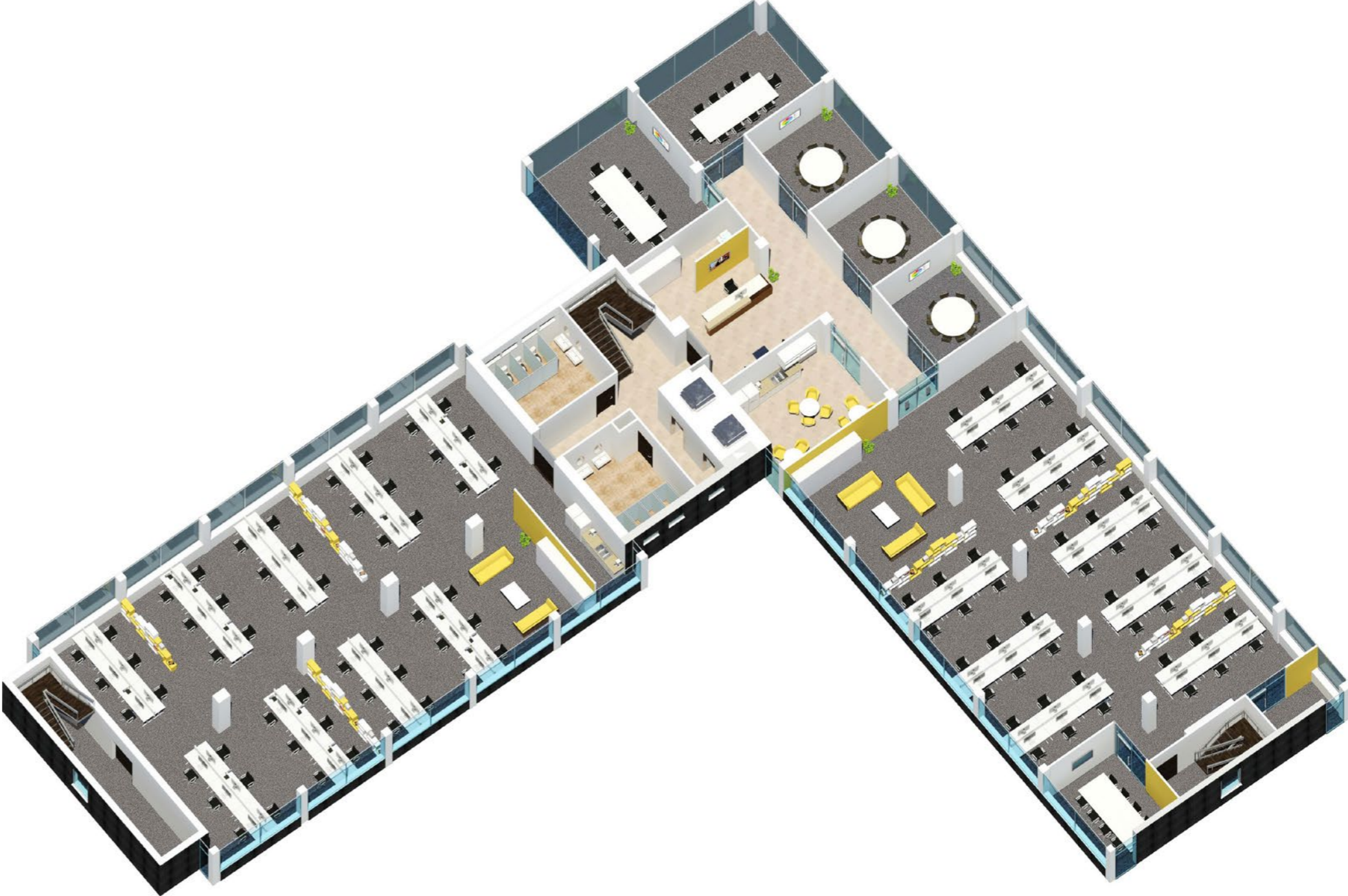
Discount on Bruntwood meeting room bookings



# Example full floor space plan

The indicative plan below shows how a full floor at Sale Point can be used, however our in-house space planning team can help you visualise alternatives according to how you work best.

Number of breakout spaces	2
Number of kitchen areas	1
Number of dedicated receptions	1



 **102**  
Workstations

---

 **6**  
Meeting rooms



# Blank canvas

At Sale Point we can offer you a blank canvas to make your mark and create a work space that is uniquely your own.

With a vision and collaborative approach, our in house development team can help turn your ideas into reality.

The offices have been designed to a high specification with a fit-out including fully cabled raised access floors, glazed meeting rooms and air conditioning.



**3,400-23,200**

Space available in sq ft









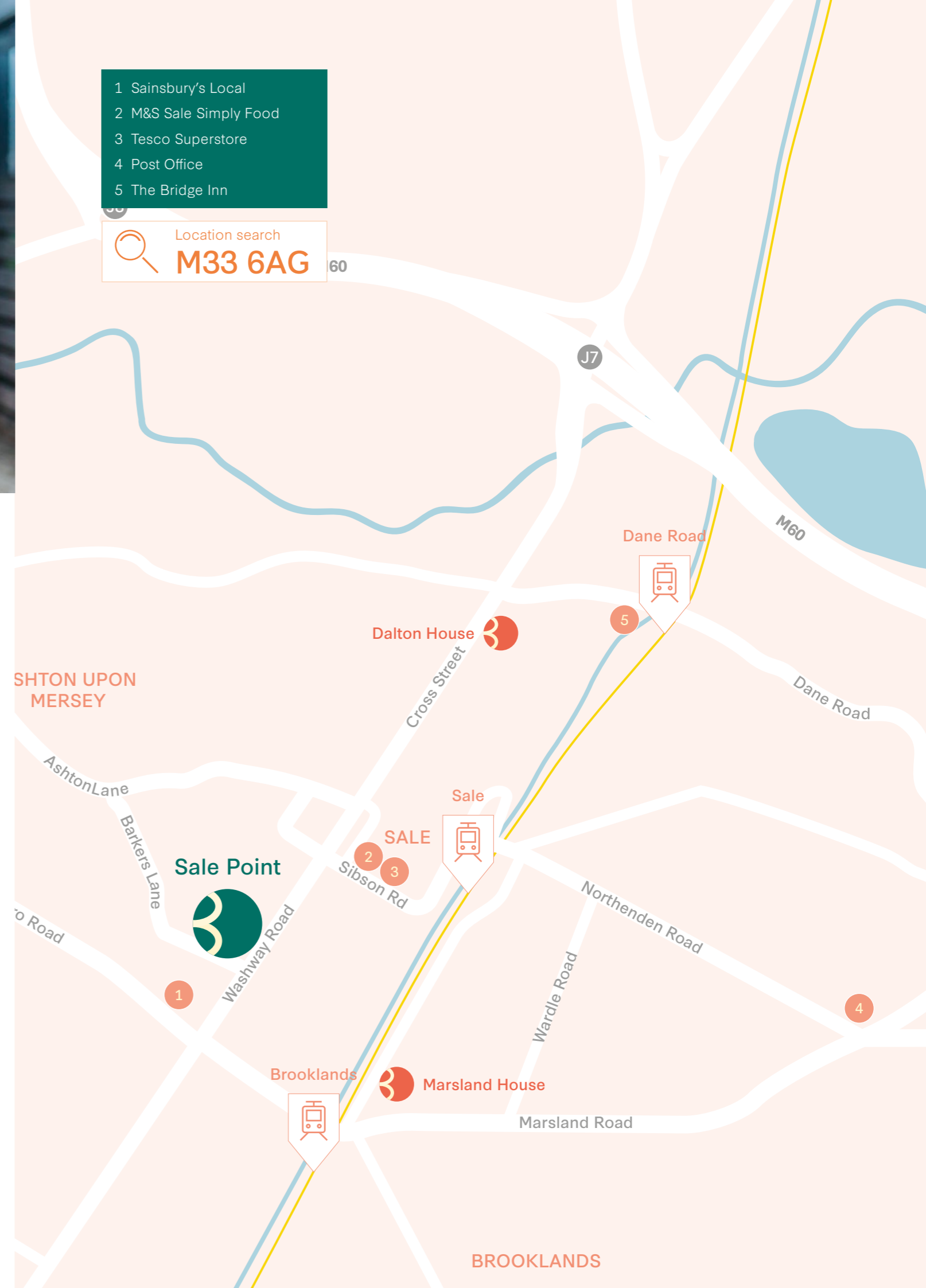
# Working in Sale

Sale Point is in a prime location, just minutes from the bustling town centre and a stone's throw away from transport links into the city.

You'll also find a great selection of restaurants, shops and bars close by which are ideal for lunch breaks or after work entertaining.

With convenient links to surrounding areas via bus, tram and car as well as on-site car parking, your commute to work couldn't be easier.

- 
**7.7 miles**  
 To Manchester
- 
**36 miles**  
 To Liverpool
- 
**0.8 miles**  
 To Sale town centre
- 
**1.4 miles**  
 To M60 motorway



# The bruntwood Collective

We know that a lot of your time is spent at work, so you want to make sure you're working from a stimulating and collaborative space.

And you don't just need that from your day-to-day office base. It can be the spaces, the buildings and the places around you. We can connect you to people and businesses throughout your building, your city and beyond.

We're creating vibrant communities across our buildings for you to join and enjoy; helping you, your colleagues and your business to thrive.

Take part in a wellbeing workshop or yoga class, devour some tasty treats at a FIKA for a midday pick me up, or immerse yourself in the lively city around you with access to innovative arts performances. We've got an extensive events programme providing business support and connecting you to like-minded organisations within our wide network across Manchester, Cheshire, Leeds, Liverpool and Birmingham.

And it's simple to join. You can access all of this and more through The Bruntwood Collective digital community.

## The Bruntwood Collective

The Bruntwood Collective is your exclusive online gateway that enables you to connect and collaborate with the community within your building and up to 50,000 customers across the entire Bruntwood group.

By signing up, you'll be able to meet a network of innovative and interesting people, seek opportunities to support you and your business, explore events taking place across all our regions and get access to experiences and competitions across the north and the midlands.

### Meet - People

Expand your network by starting a conversation with people from all types of businesses and backgrounds. You never know where your new connections could take you.

### Seek - Opportunities

You won't have to look far to find businesses and people who will be interested in your work and keen to collaborate. The help and support you need to grow and succeed could be just around the corner.

### Explore - Events

There's a world of opportunity right outside your workspace and it's ready to be explored. Join a creative workshop, learn a new skill, or build your network to help grow your business. Go and see what's happening in your city and beyond.

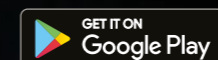
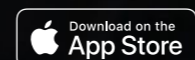
### Thrive - Together

Download the app on iOS and Android stores by searching 'Bruntwood', or visiting [collective.bruntwood.co.uk](https://collective.bruntwood.co.uk)

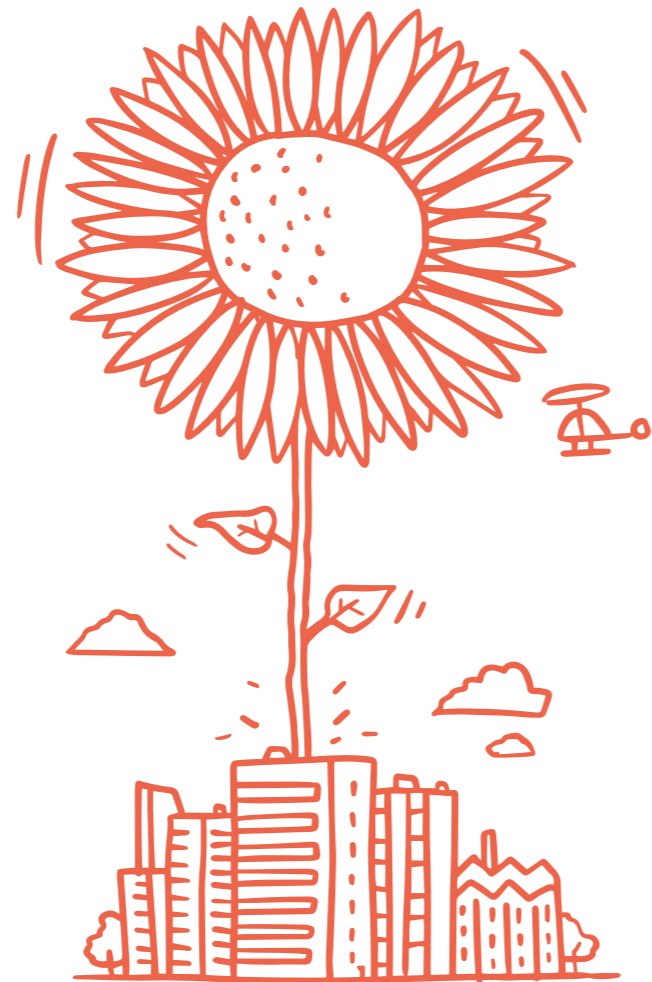
Join now at: [collective.bruntwood.co.uk](https://collective.bruntwood.co.uk)



Download the app on iOS and Android stores by searching 'Bruntwood', or visiting [collective.bruntwood.co.uk](https://collective.bruntwood.co.uk)



# Creating Thriving Cities



A family-owned and run business, Bruntwood has been in existence for over 40 years, with a single-minded focus on creating the right places and spaces for businesses of all shapes and sizes to flourish. Whether it's a single desk for a day, or a whole building for 25 years, Bruntwood prides itself on not just meeting but exceeding its customers' needs.

With an unrivalled track record in developing and managing properties across the UK's regional cities, Bruntwood believes in acting as your property partner, not your landlord. Flexibility, sustainability and leaving places better than we find them are all part of our core values.

Everywhere we operate you will find that Bruntwood is always actively involved in the life and wellbeing of our communities. Every year, we contribute 10% of our profits to charitable causes, from sponsoring and encouraging cultural activity to supporting programmes that help people of all ages get more out of life.

Our philosophy is simple: for our business to be a success we need our customers to be successful and the cities where we operate to be successful too. That's why we're good people to do business with.



**1.8m**

Sq ft of development planned 2017-2020



**£1.01bn**

Value of Bruntwood portfolio



**£1.5bn**

Gross value of development pipeline



**8.6m**

Total ownership in sq ft



**3,017**

Total number of customers



**4.1m**

Total sq ft in Manchester city centre

“Everything we do relates back to our core purpose: Creating Thriving Cities.”

– Chris Oglesby





Bruntwood  
Union  
Albert Square  
Manchester  
M2 6LW

For more information please  
call us or visit the website

**0161 233 7877**

**[bruntwood.co.uk](http://bruntwood.co.uk)**



In line with the Misrepresentation Act 1967, Unfair Contract Terms Act 1977 and The Property Misdescriptions Act 1999, Bruntwood Works Limited gives notice that (1) These particulars are a general outline only, for the guidance of prospective purchasers or customers, and do not constitute the whole or any part of an offer or contract. (2) Bruntwood Works Limited cannot guarantee and accepts no liability whatsoever for the accuracy of any description, dimensions, references to condition, necessary permissions for use and occupation and other details contained herein and prospective purchasers or tenants must therefore not rely on them as agent advisor or other representative statement of fact or representations and must satisfy themselves as to their accuracy. (3) No employee of Bruntwood Works Limited has any authority to make or give any representations or warranty or enter into any contract whatever in relation to the property. (4) Bruntwood Works Limited will not be liable, in negligence or otherwise, for any loss arising from the use of these particulars. (5) Space planning contained in this brochure is indicative only and may require modifications to the building design. (6) All floor plans are not to scale and are for identification purpose only.