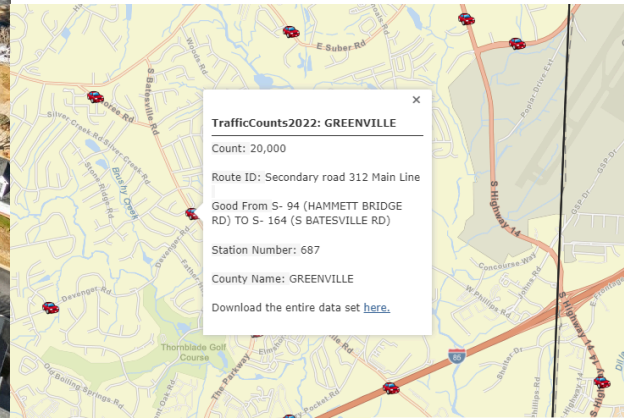
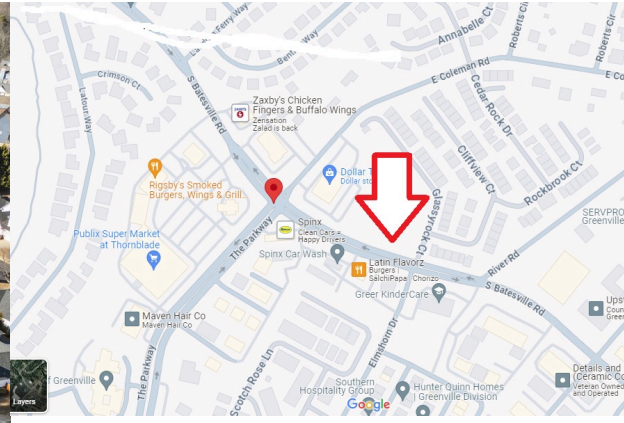


# S BATESVILLE RD, GREER, SC 29651 I-85/Pelham Rd Corridor

# \$2,725,000



**An excellent location on the I-85 / Pelham Rd corridor at the intersection of S Batesville Rd and The Parkway.  
Asking Price Adjusted from \$2,950,000 TO \$2,725,000**

- ±3.59 Total Acres with level topography
- Zoned Office District & Neighborhood Commercial
- Access to S Batesville and E Coleman Rd leading to a lighted intersection.
- Utilities available
- Two parcels adjacent to each other, TM #0534010100906 & #0534010100904
- 2025 Taxes \$6,013.57 total



**Hope Tz Schmalzl, CCIM**  
Commercial Broker  
864-630-0352  
hopetz@joynercommercial.com  
www.HopeTzcommercial.com

**BERKSHIRE  
HATHAWAY**  
HOMESERVICES

C. DAN JOYNER,  
REALTORS®

COMMERCIAL

230 Buist Avenue Greenville, SC 29609 | (864) 233-7724  
<http://www.cdanjoyner.com>

©2026 BHH Affiliates, LLC. Real Estate Brokerage Services are offered through the network member franchisees of BHH Affiliates, LLC. Most franchisees are independently owned and operated. Berkshire Hathaway HomeServices and the Berkshire Hathaway HomeServices symbol are registered service marks of Columbia Insurance Company, a Berkshire Hathaway affiliate. Information not verified or guaranteed. If your property is currently listed with a Broker, this is not intended as a solicitation. Equal Housing Opportunity.