



**AVISON  
YOUNG**

**OFFICE SPACE FOR LEASE**

**400** | **W. Main Street**  
Durham, NC 27701

Partnership. Performance.

<b>Type</b>	Seven-Story Office Building
<b>Building Size</b>	45,799 sf
<b>Year Built</b>	1973
<b>Location</b>	Durham's City Center District
<b>Lease Term</b>	Up to 12/31/2019

\*On Site Parking Available (*Monthly & Visitors*)

	<b>Available</b>	<b>Monthly Rent</b>
Suite 103c:	854 sf	\$1,199/month, Full Service
Suite 300a:	1,783 sf	\$2,999/month, Full Service
Suite 300b:	374 sf	\$599/month, Full Service
Suite 300c:	357 sf	\$579/month, Full Service
Suite 300d:	603 sf	\$999/month, Full Service
Suite 300e:	385 sf	\$649/month, Full Service
Suite 300f:	838 sf	\$1,399/month, Full Service
Suite 604:	1,756 sf	\$2,399/month, Full Service



Platinum member

**Arnold Siegmund**  
**Principal**

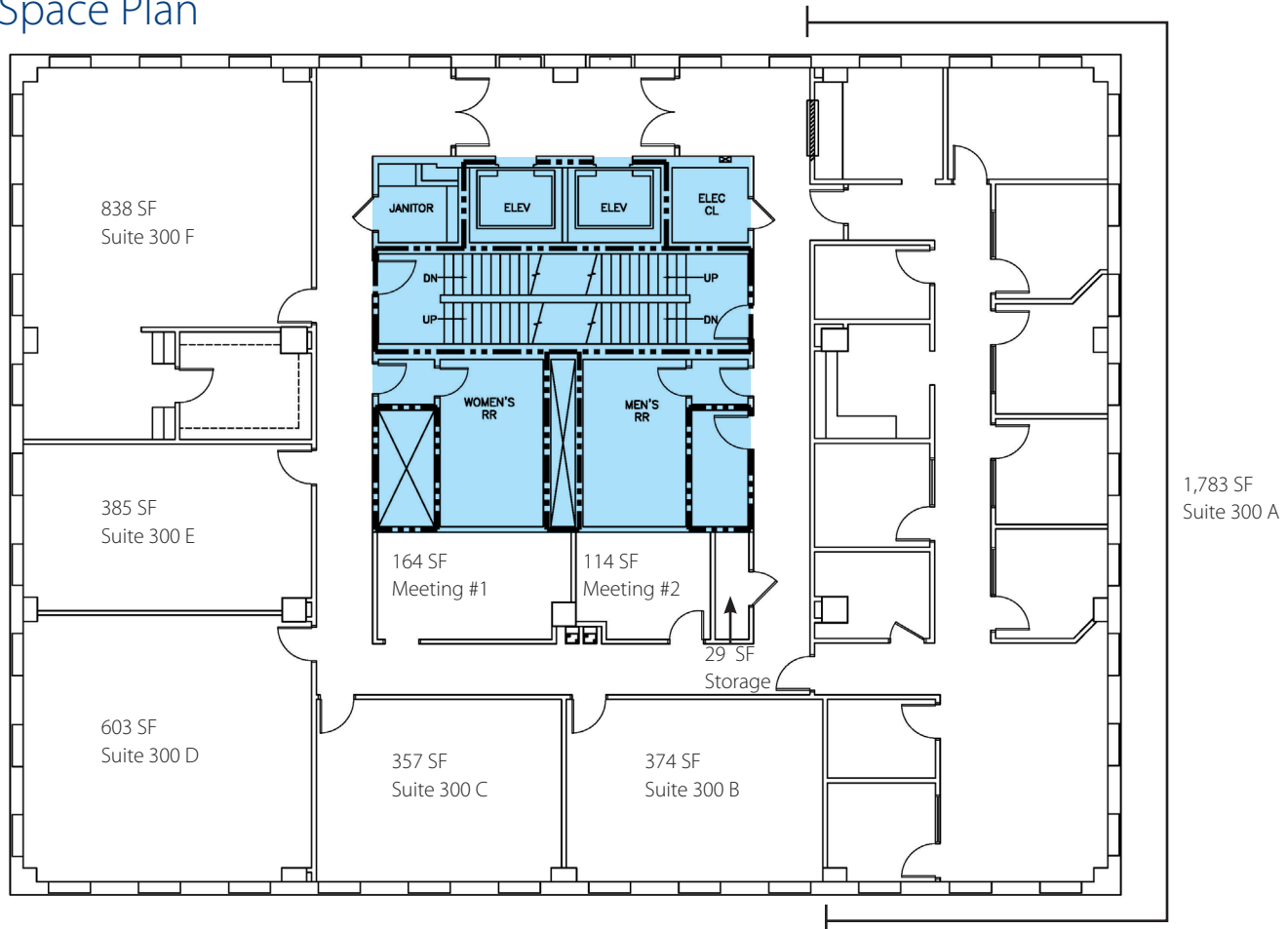
919.420.1573

[arnold.siegmund@avisonyoung.com](mailto:arnold.siegmund@avisonyoung.com)

400

**W. Main Street**  
Durham, NC 27701

## Space Plan



	Available sf	Monthly Rent	3rd Floor Common Area Rooms	Available sf	Monthly Rent
Suite 300 A:	1,783 sf	\$2,999/month	Meeting Room #1:	164 sf	\$249/month
Suite 300 B:	374 sf	\$599/month	Meeting Room #2:	114 sf	\$199/month
Suite 300 C:	357 sf	\$579/month	Storage:	29 sf	\$50/month
Suite 300 D:	603 sf	\$999/month			
Suite 300 E:	385 sf	\$649/month			
Suite 300 F:	838 sf	\$1,399/month			

**AVISON  
YOUNG**

**Arnold Siegmund**  
**Principal**

919.420.1573

arnold.siegmund@avisonyoung.com

5440 Wade Park Boulevard, Suite 200 Raleigh, NC 27607 | 919.785.3434 | avisonyoung.com

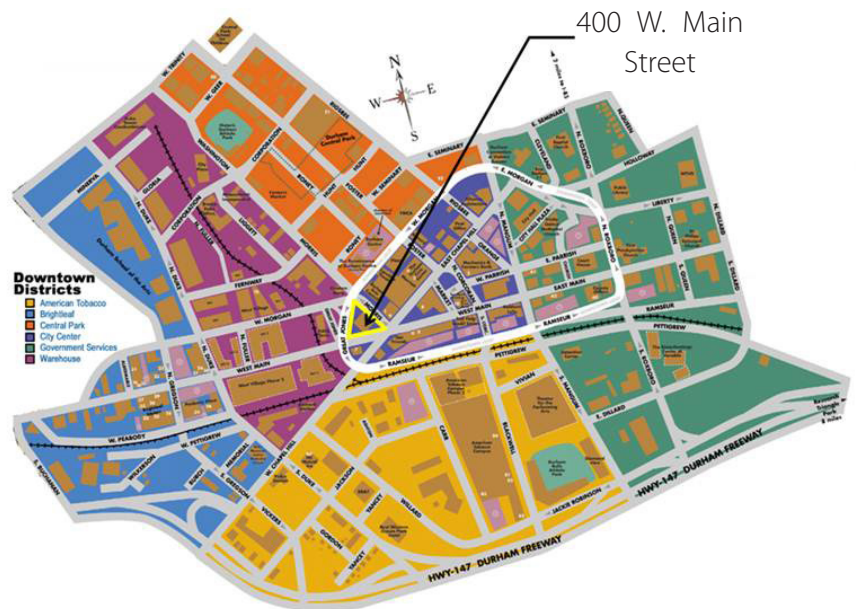
The information contained herein was obtained from sources believed reliable; however, Avison Young makes no guarantees, warranties, or representations as to the completeness or accuracy thereof. The presentation of this property is submitted subject to errors, omissions, changes of price or conditions prior to sale or lease, or withdrawal without notice.

# 400

## W. Main Street Durham, NC 27701

### Amenities

- On-site surface and underground parking
- On-site monthly and visitor parking available
- 40 restaurants within a 10-minute walk of the City Center
- Close to the historic American Tobacco District, the Durham Bulls Athletic Park, and numerous other amenities
- Convenient to NC Hwy 147/Durham Freeway and NC Highway 98
- Building wired for fiber



### View from Sixth Floor



**AVISON  
YOUNG**

**Arnold Siegmund**  
**Principal**

919.420.1573

[arnold.siegmund@avisonyoung.com](mailto:arnold.siegmund@avisonyoung.com)

5440 Wade Park Boulevard, Suite 200 Raleigh, NC 27607 | 919.785.3434 | [avisonyoung.com](http://avisonyoung.com)

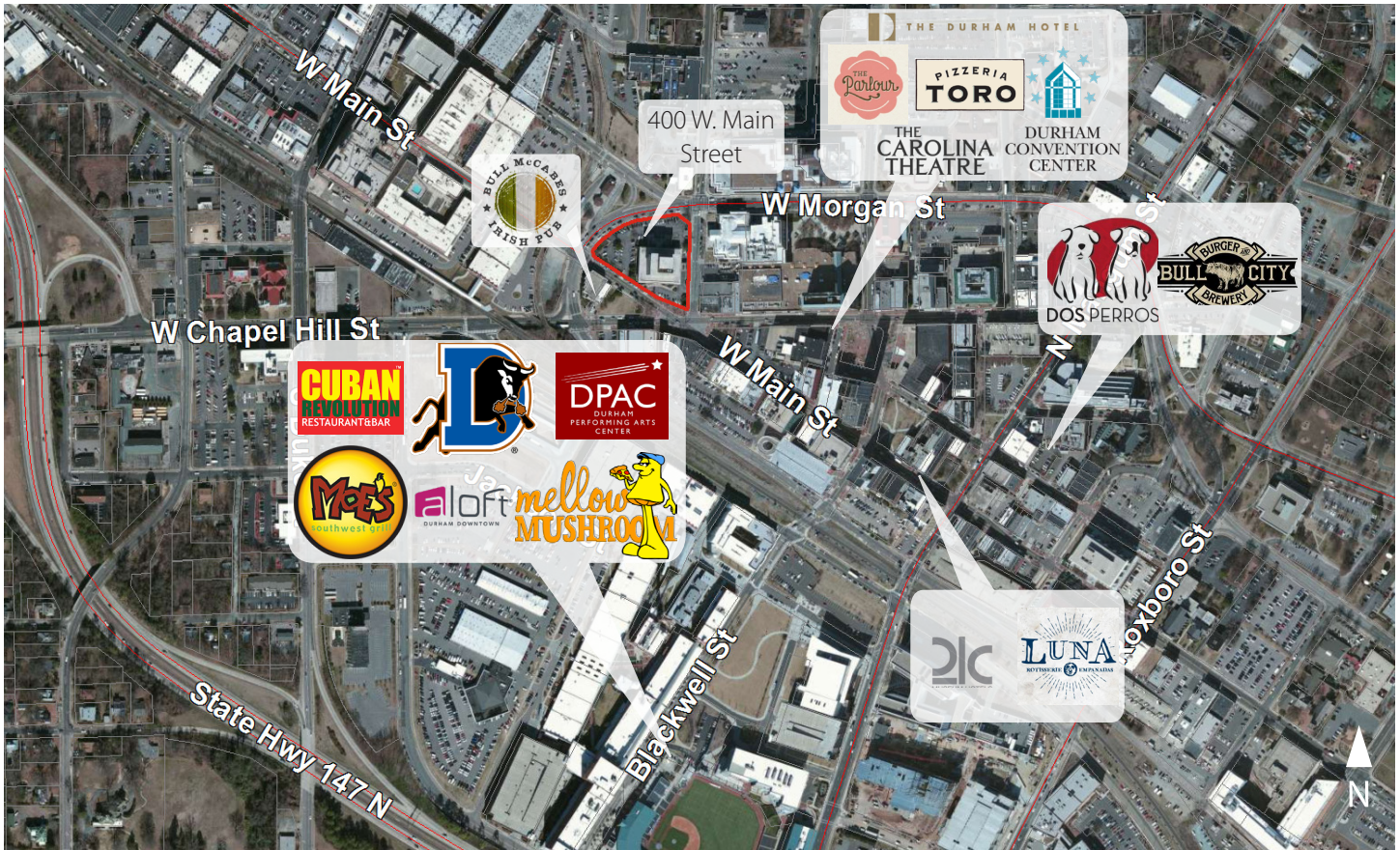
The information contained herein was obtained from sources believed reliable; however, Avison Young makes no guarantees, warranties, or representations as to the completeness or accuracy thereof. The presentation of this property is submitted subject to errors, omissions, changes of price or conditions prior to sale or lease, or withdrawal without notice.



# 400

**W. Main Street**  
Durham, NC 27701

## Nearby Amenities



**AVISON  
YOUNG**

**Arnold Siegmund**  
**Principal**

919.420.1573

arnold.siegmund@avisonyoung.com

5440 Wade Park Boulevard, Suite 200 Raleigh, NC 27607 | 919.785.3434 | avisonyoung.com

The information contained herein was obtained from sources believed reliable; however, Avison Young makes no guarantees, warranties, or representations as to the completeness or accuracy thereof. The presentation of this property is submitted subject to errors, omissions, changes of price or conditions prior to sale or lease, or withdrawal without notice.