

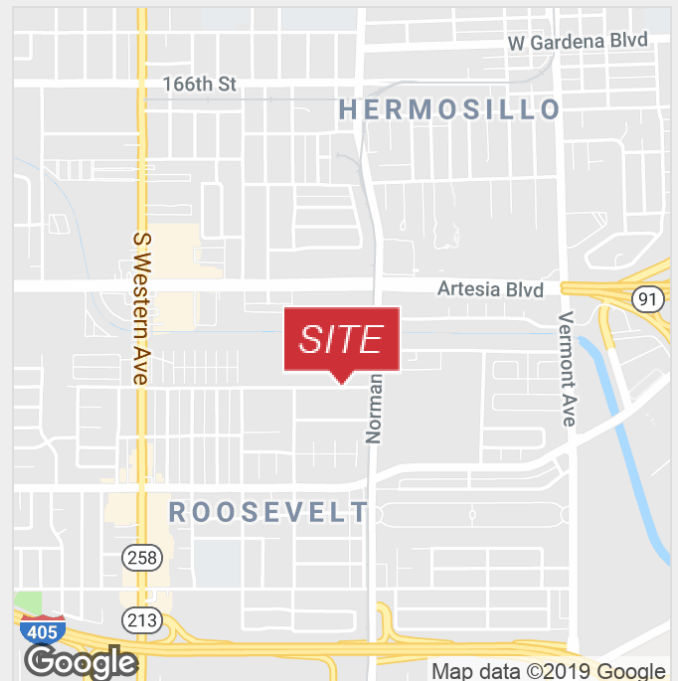


1444 W. 178th Street

Gardena, California 90248

Property Highlights

- Skylights
- Shared Space
- Warehouse Space: ±2,400 SF including racks
- Office Space: Up to ±1,000 Square Feet
- Loading: One Ground Level Door
- Power: 200A, Main (125 amp feed/breaker) 120 – 240V, 3 Phase, 4 Wire (subtenant to verify)
- Minimum Clearance: 20 Feet
- Easy Access to 405, 110, and 91 Freeways
- Approximately 11 miles South of LAX
- Rate: \$1.10 Industrial Gross (including CAM)



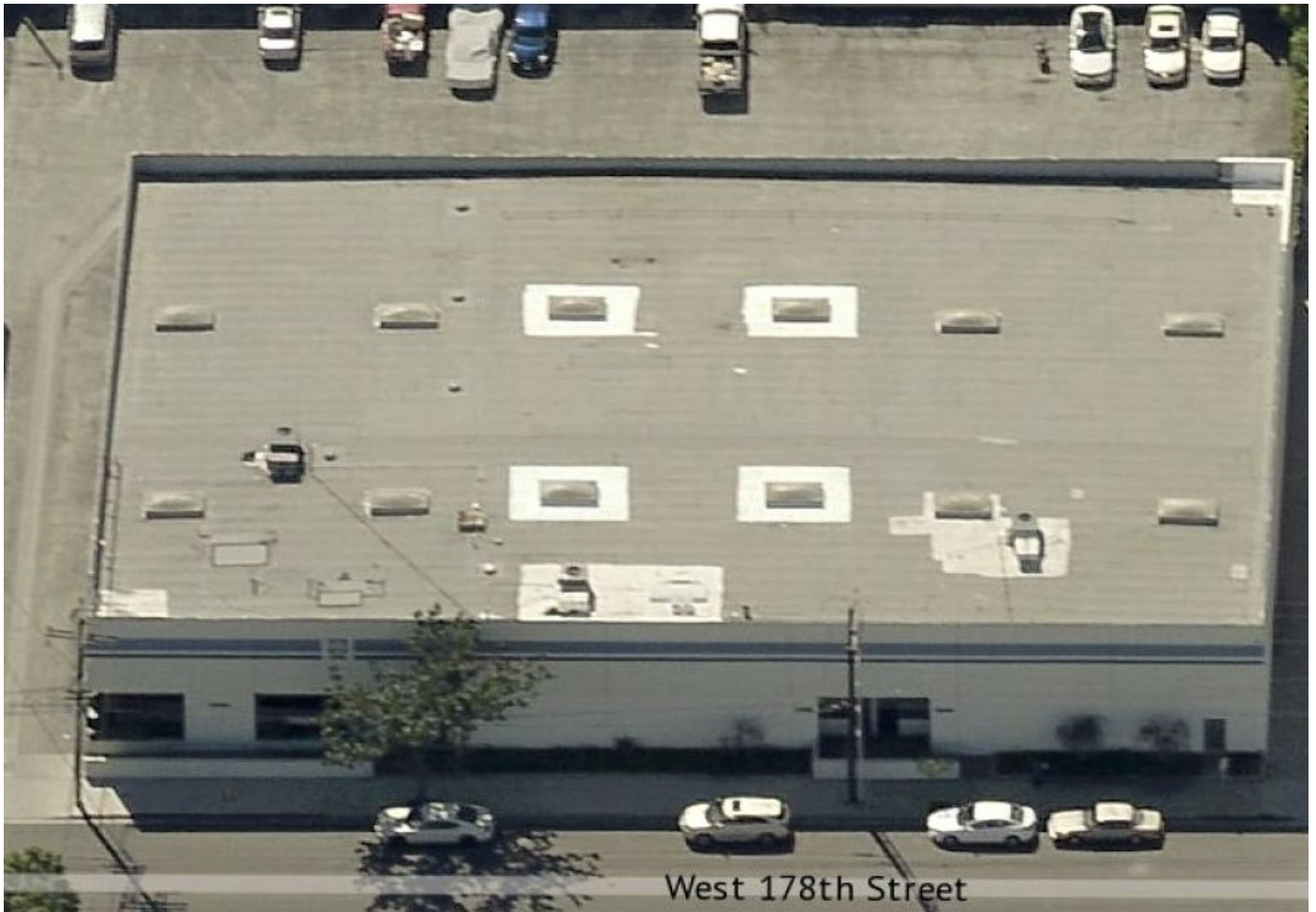
For more information:

Randy Matusoff, CCIM, SIOR

310 715 8284 • rmatusoff@naicapital.com • CA CalDRE #00971273

For Lease

1444 W. 178th Street



Randy Matusoff, CCIM, SIOR

310.715.8284

rmatusoff@naicapital.com

CalDRE #00971273

NAICapital
COMMERCIAL REAL ESTATE SERVICES, WORLDWIDE